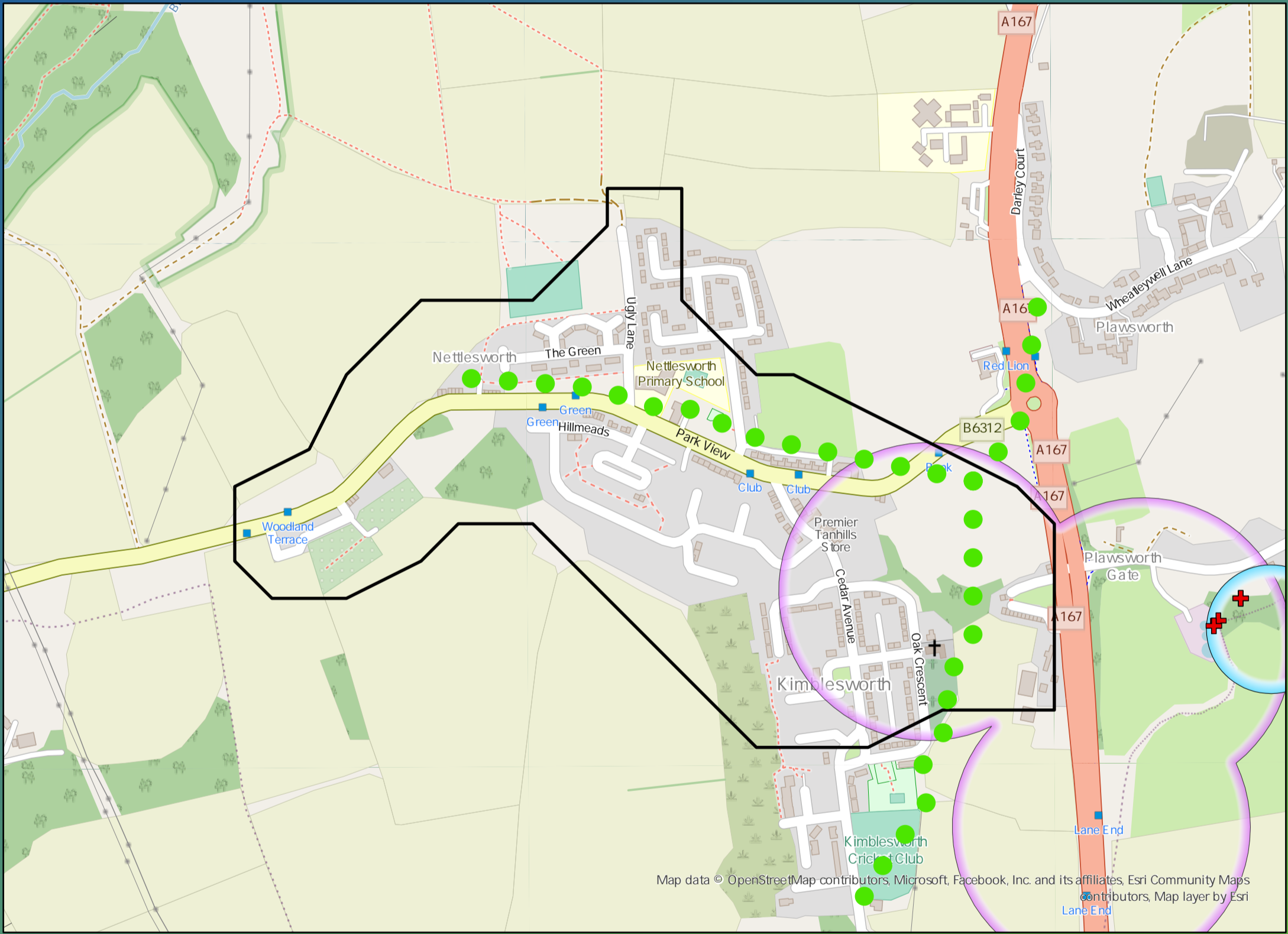


DWMP Drainage Community Summary Plawsworth



<p>Properties at Risk of Flooding Internally</p>	2020 6	<p>Storm overflows spilling to Rivers</p>	<p>Storm overflows spilling to Bathing Waters</p>	<p>Manholes at Risk of Pollution</p>	<p>Number of spills to the Environment</p>
	2045 0	<p>Site of Special Scientific Interest</p>	<p>Strategic Area of Conservation</p>	<p>Strategic Area for Ecology</p>	



Map data © OpenStreetMap contributors, Microsoft, Facebook, Inc. and its affiliates, Esri Community Maps contributors, Map layer by Esri

Opportunities

- 3rd Party Stakeholder
- WINEP Programme
- Storm Overflow Programme
- Blue Green Corridor
- Storm Overflow Removal
- Drainage Communities

This is drainage community reference DC_01 which is within the Plawsworth area.
 The drainage community is classified as low priority based upon it containing a river water asset discharging to an area without environmental concerns.
 The DWMP recommends that storage at the storm overflow(s) and storage in the catchment is created to manage and improve spill and flooding performance.
 The application of growth in the catchment has shown that no investment is required at the sewage treatment works.

£770,000

Cost

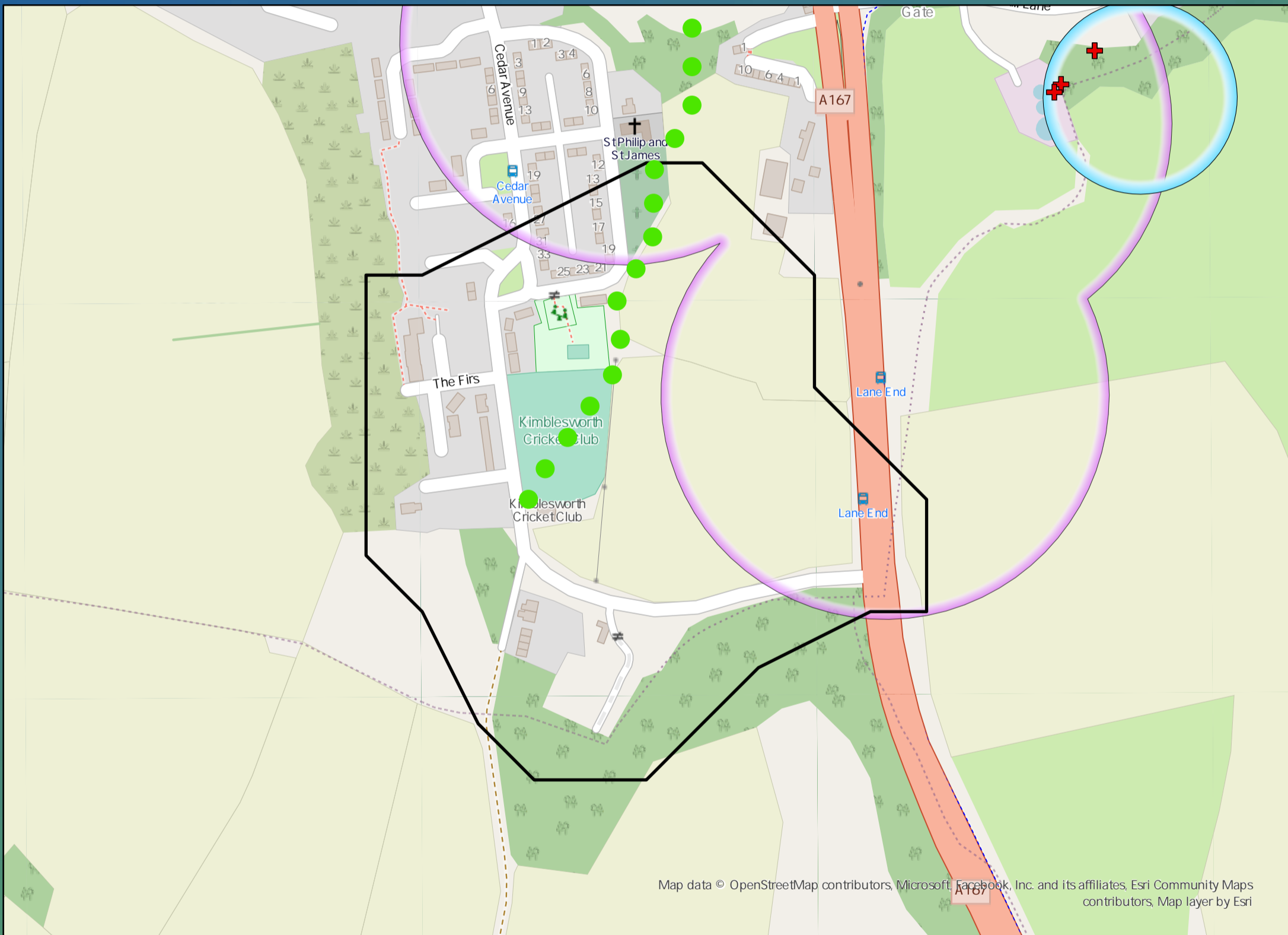
£140,000

Benefit

DWMP Drainage Community Summary Plawsworth



<p>Properties at Risk of Flooding Internally</p>	2020 0	<p>Storm overflows spilling to Rivers</p>	0	<p>Storm overflows spilling to Bathing Waters</p>	0	<p>Manholes at Risk of Pollution</p>	0	<p>Number of spills to the Environment</p>	2020 0
	2045 0	<p>Site of Special Scientific Interest</p>	No	<p>Strategic Area of Conservation</p>	No	<p>Strategic Area for Ecology</p>	No		2045 0
	Post Investment 0							Post Investment 0	



Opportunities

- 3rd Party Stakeholder
- WINEP Programme
- Storm Overflow Programme
- Blue Green Corridor
- Storm Overflow Removal
- Drainage Communities

This is drainage community reference DC_02 which is within the Plawsworth area.

The drainage community is classified as low priority based upon it containing a river water asset discharging to an area without environmental concerns.

The DWMP recommends that no investment is required due to the performance of the storm overflow and level of internal property flood risk in the catchment. The catchment will be monitored for future change.

The application of growth in the catchment has shown that no investment is required at the sewage treatment works.

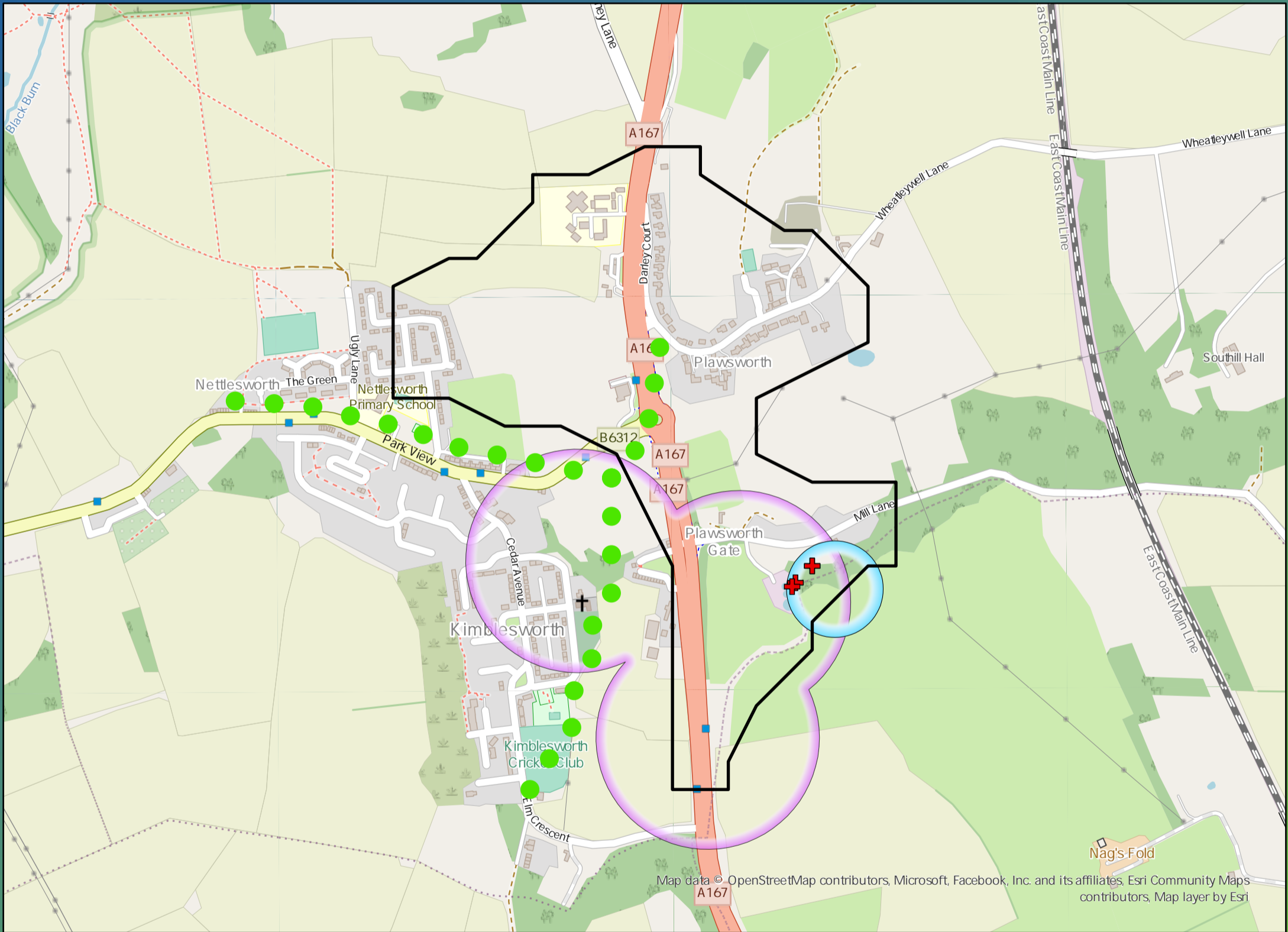
£0
 Cost

£0
 Benefit

DWMP Drainage Community Summary Plawsworth



<p>Properties at Risk of Flooding Internally</p>	2020 2	<p>Storm overflows spilling to Rivers</p>	<p>Storm overflows spilling to Bathing Waters</p>	<p>Manholes at Risk of Pollution</p>	<p>Number of spills to the Environment</p>
	2045 0	<p>Site of Special Scientific Interest</p>	<p>Strategic Area of Conservation</p>	<p>Strategic Area for Ecology</p>	
Post Investment 0	No	No	No	No	



Opportunities

- 3rd Party Stakeholder
- WINEP Programme
- Storm Overflow Programme
- Blue Green Corridor
- Storm Overflow Removal
- Drainage Communities

This is drainage community reference DC_03 which is within the Plawsworth area.

The drainage community is classified as low priority based upon it containing a river water asset discharging to an area without environmental concerns.

The DWMP recommends that no investment is required due to the performance of the storm overflow and level of internal property flood risk in the catchment. The catchment will be monitored for future change.

The application of growth in the catchment has shown that no investment is required at the sewage treatment works.

£1,680,000

Cost

£8,610,000

Benefit