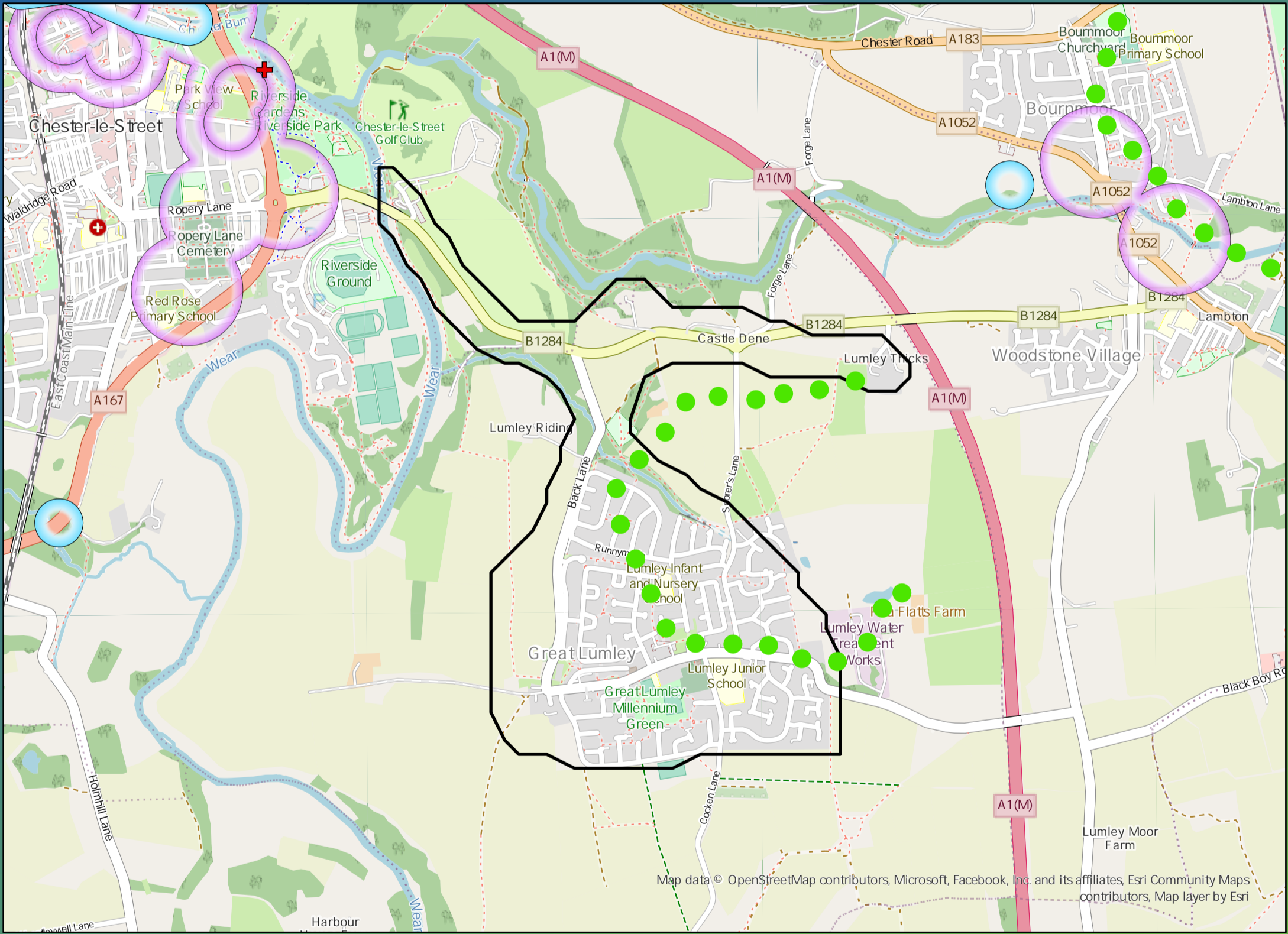


DWMP Drainage Community Summary Chester Le Street



<p>Properties at Risk of Flooding Internally</p>	2020 43	<p>2</p> <p>Storm overflows spilling to Rivers</p>	<p>0</p> <p>Storm overflows spilling to Bathing Waters</p>	<p>0</p> <p>Manholes at Risk of Pollution</p>	<p>Number of spills to the Environment</p>
	2045 69	<p>No</p> <p>Site of Special Scientific Interest</p>	<p>No</p> <p>Strategic Area of Conservation</p>	<p>Yes</p> <p>Strategic Area for Ecology</p>	
	Post Investment 0				2045 39
					Post Investment 20



Opportunities

- 3rd Party Stakeholder
- WINEP Programme
- Storm Overflow Programme
- Blue Green Corridor
- Storm Overflow Removal
- Drainage Communities

This is drainage community reference DC_01 which is within the Chester Le Street area. The drainage community is classified as high priority based upon it containing a river water asset discharging to an environmentally sensitive area. The DWMP recommends that storage at the storm overflow(s) and storage in the catchment is created to manage and improve spill and flooding performance. The application of growth in the catchment has shown that no investment is required at the sewage treatment works.

£3,680,000

Cost

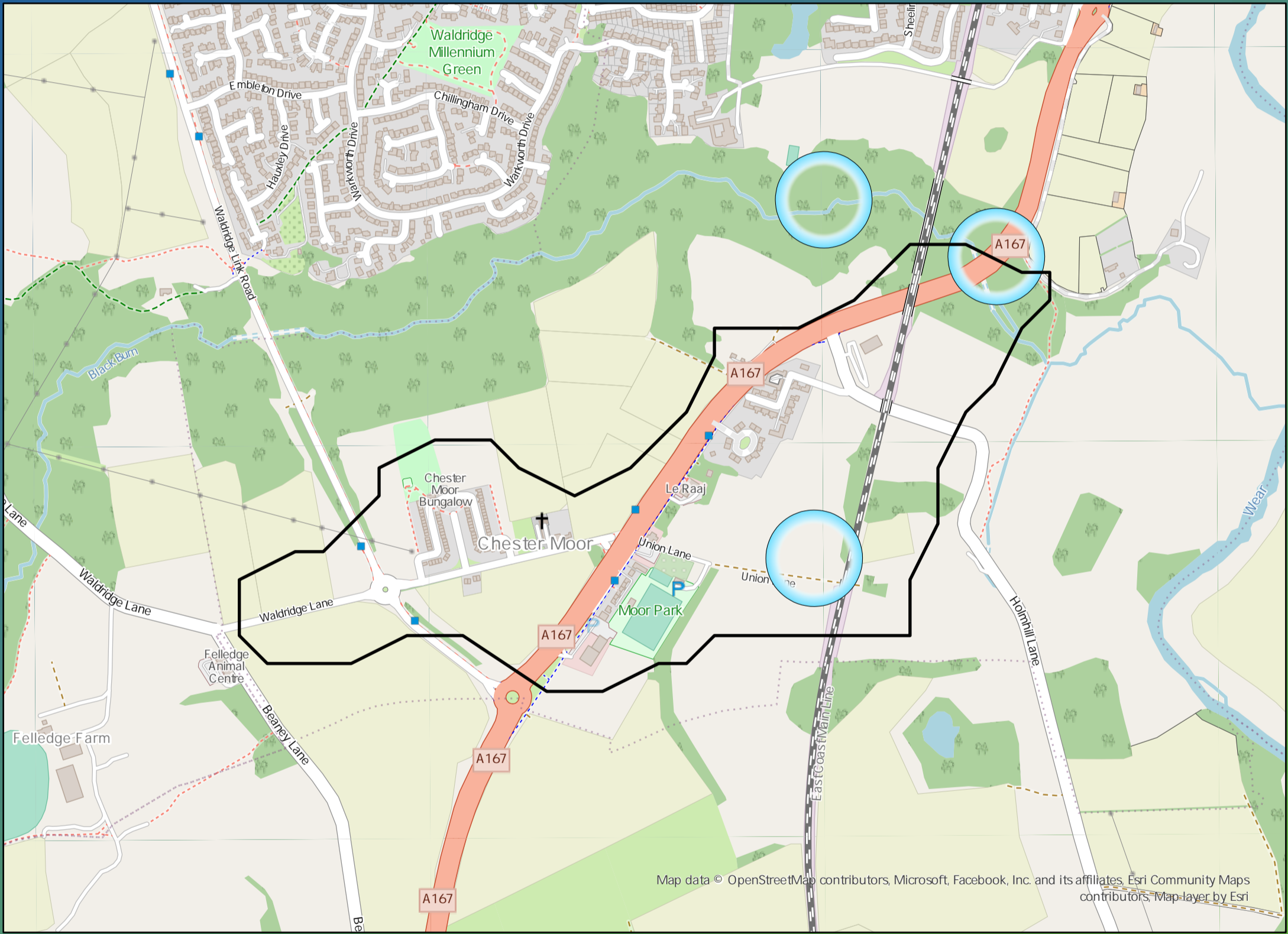
£8,730,000

Benefit

DWMP Drainage Community Summary Chester Le Street



<p>Properties at Risk of Flooding Internally</p>	2020 0	<p>Storm overflows spilling to Rivers</p>	2020 0	<p>Storm overflows spilling to Bathing Waters</p>	2020 0	<p>Number of spills to the Environment</p>	2020 0
	2045 0		<p>Site of Special Scientific Interest</p>		2045 0		<p>Strategic Area of Conservation</p>
	Post Investment 0		No		No		Post Investment 0



Opportunities

- 3rd Party Stakeholder
- WINEP Programme
- Storm Overflow Programme
- Blue Green Corridor
- Storm Overflow Removal
- Drainage Communities

This is drainage community reference DC_02 which is within the Chester Le Street area.

The drainage community is classified as low priority based upon it containing a river water asset discharging to an area without environmental concerns.

The DWMP recommends that no investment is required due to the performance of the storm overflow and level of internal property flood risk in the catchment. The catchment will be monitored for future change.

The application of growth in the catchment has shown that no investment is required at the sewage treatment works.

£0

Cost

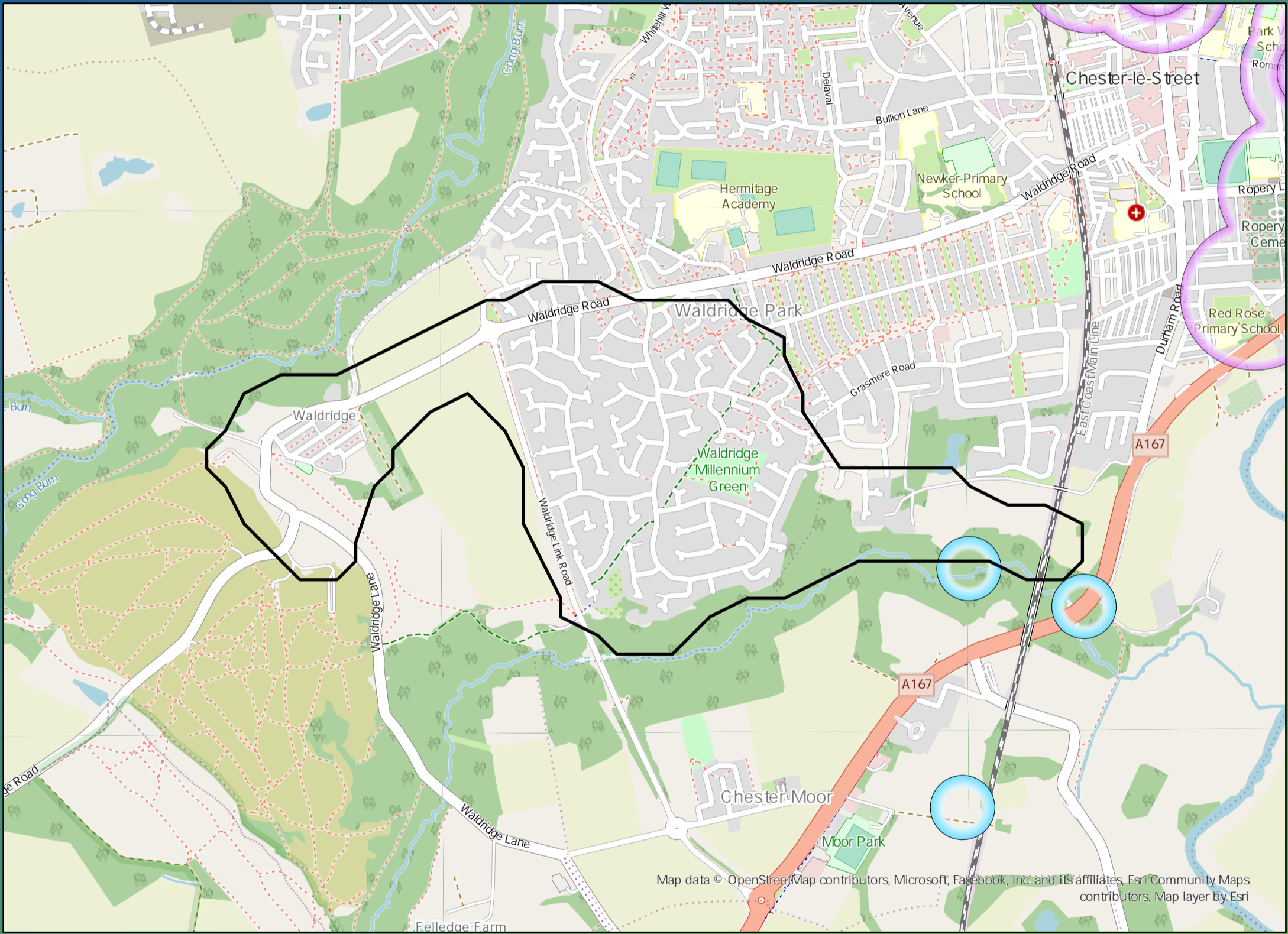
£0

Benefit

DWMP Drainage Community Summary Chester Le Street



<p>Properties at Risk of Flooding Internally</p>	2020 8	<p>Storm overflows spilling to Rivers</p>	<p>Storm overflows spilling to Bathing Waters</p>	<p>Manholes at Risk of Pollution</p>	<p>Number of spills to the Environment</p>
	2045 0	<p>Site of Special Scientific Interest</p>	<p>Strategic Area of Conservation</p>	<p>Strategic Area for Ecology</p>	
	Post Investment 0	<p>Yes</p>	<p>No</p>	<p>No</p>	Post Investment 1



Opportunities

- 3rd Party Stakeholder
- WINEP Programme
- Storm Overflow Programme
- Blue Green Corridor
- Storm Overflow Removal
- Drainage Communities

This is drainage community reference DC_03 which is within the Chester Le Street area.

The drainage community is classified as low priority based upon it containing a river water asset discharging to an area without environmental concerns.

The DWMP recommends that storage at the storm overflow(s) and storage in the catchment is created to manage and improve spill and flooding performance.

The application of growth in the catchment has shown that no investment is required at the sewage treatment works.

£1,520,000

Cost

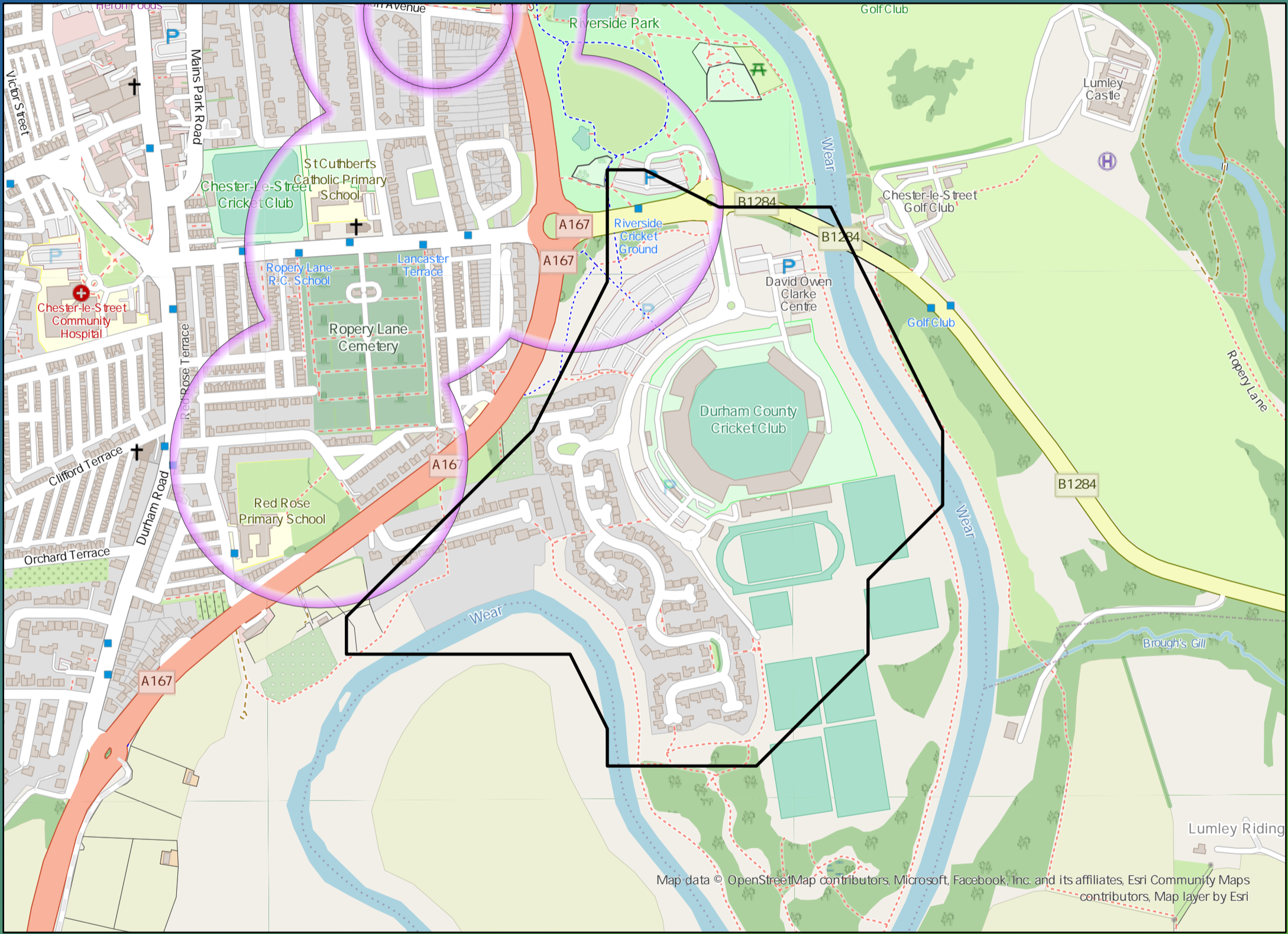
£420,000

Benefit

DWMP Drainage Community Summary Chester Le Street



<p>Properties at Risk of Flooding Internally</p>	2020 8	<p>Storm overflows spilling to Rivers</p>	<p>Storm overflows spilling to Bathing Waters</p>	<p>Manholes at Risk of Pollution</p>	<p>Number of spills to the Environment</p>
	2045 0	<p>Site of Special Scientific Interest</p>	<p>Strategic Area of Conservation</p>	<p>Strategic Area for Ecology</p>	
	Post Investment 0				



Opportunities

- 3rd Party Stakeholder
- WINEP Programme
- Storm Overflow Programme
- Blue Green Corridor
- Storm Overflow Removal
- Drainage Communities

This is drainage community reference DC_04 which is within the Chester Le Street area.

The drainage community is classified as low priority based upon it containing a river water asset discharging to an area without environmental concerns.

The DWMP recommends that storage at the storm overflow(s) and storage in the catchment is created to manage and improve spill and flooding performance.

The application of growth in the catchment has shown that no investment is required at the sewage treatment works.

£850,000

Cost

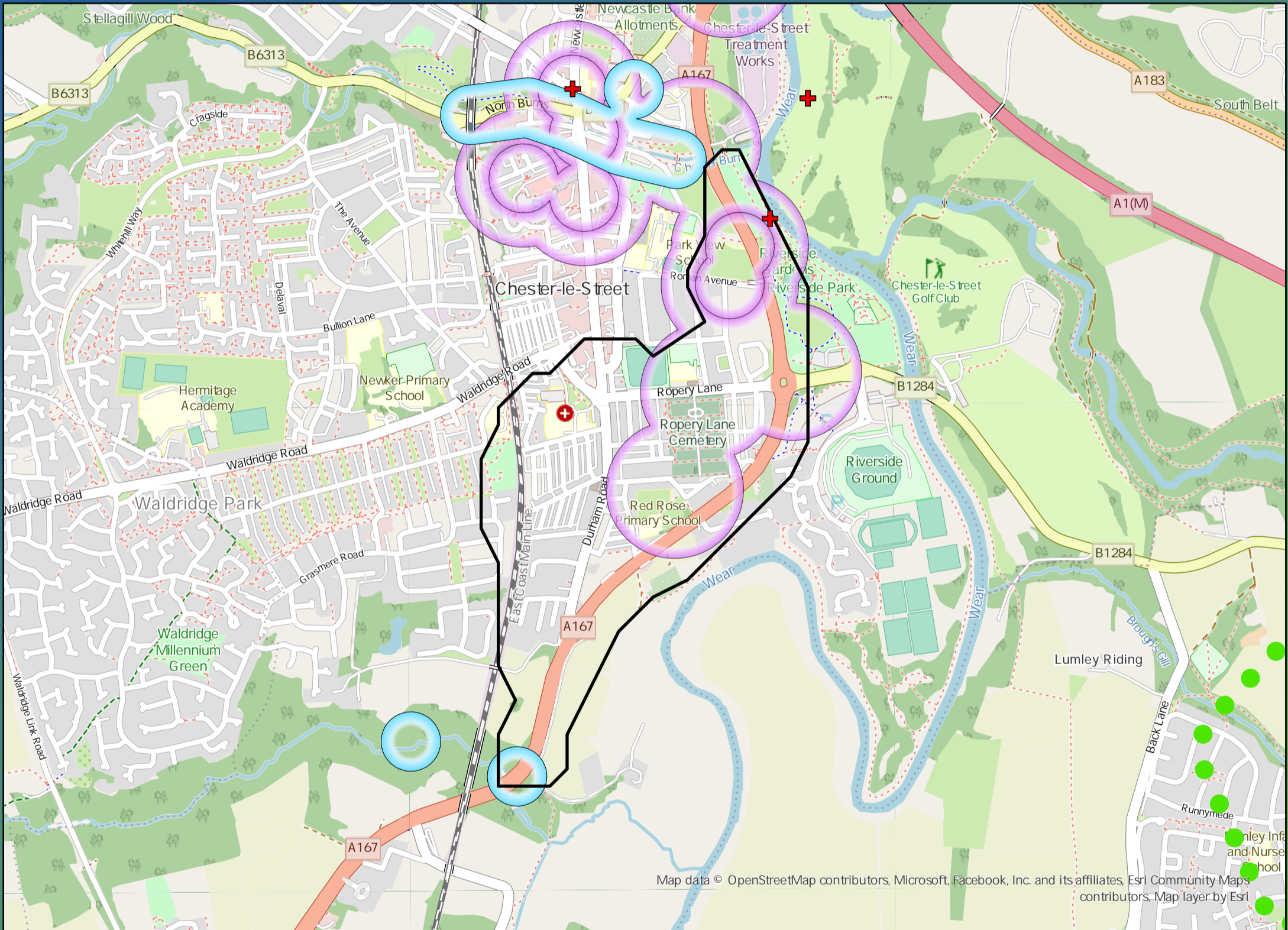
£200,000

Benefit

DWMP Drainage Community Summary Chester Le Street



<p>Properties at Risk of Flooding Internally</p>	2020 18	<p>3</p> <p>Storm overflows spilling to Rivers</p>	<p>0</p> <p>Storm overflows spilling to Bathing Waters</p>	<p>0</p> <p>Manholes at Risk of Pollution</p>	<p>Number of spills to the Environment</p>
	2045 23	<p>No</p> <p>Site of Special Scientific Interest</p>	<p>No</p> <p>Strategic Area of Conservation</p>	<p>Yes</p> <p>Strategic Area for Ecology</p>	
	Post Investment 0				



Opportunities

- 3rd Party Stakeholder
- WINEP Programme
- Storm Overflow Programme
- Blue Green Corridor
- Storm Overflow Removal
- Drainage Communities

This is drainage community reference DC_05 which is within the Chester Le Street area.

The drainage community is classified as high priority based upon it containing a RNAG asset discharging to an environmentally sensitive area.

The DWMP recommends that storage at the storm overflow(s) and storage in the catchment is created to manage and improve spill and flooding performance.

The application of growth in the catchment has shown that no investment is required at the sewage treatment works.

£5,480,000

Cost

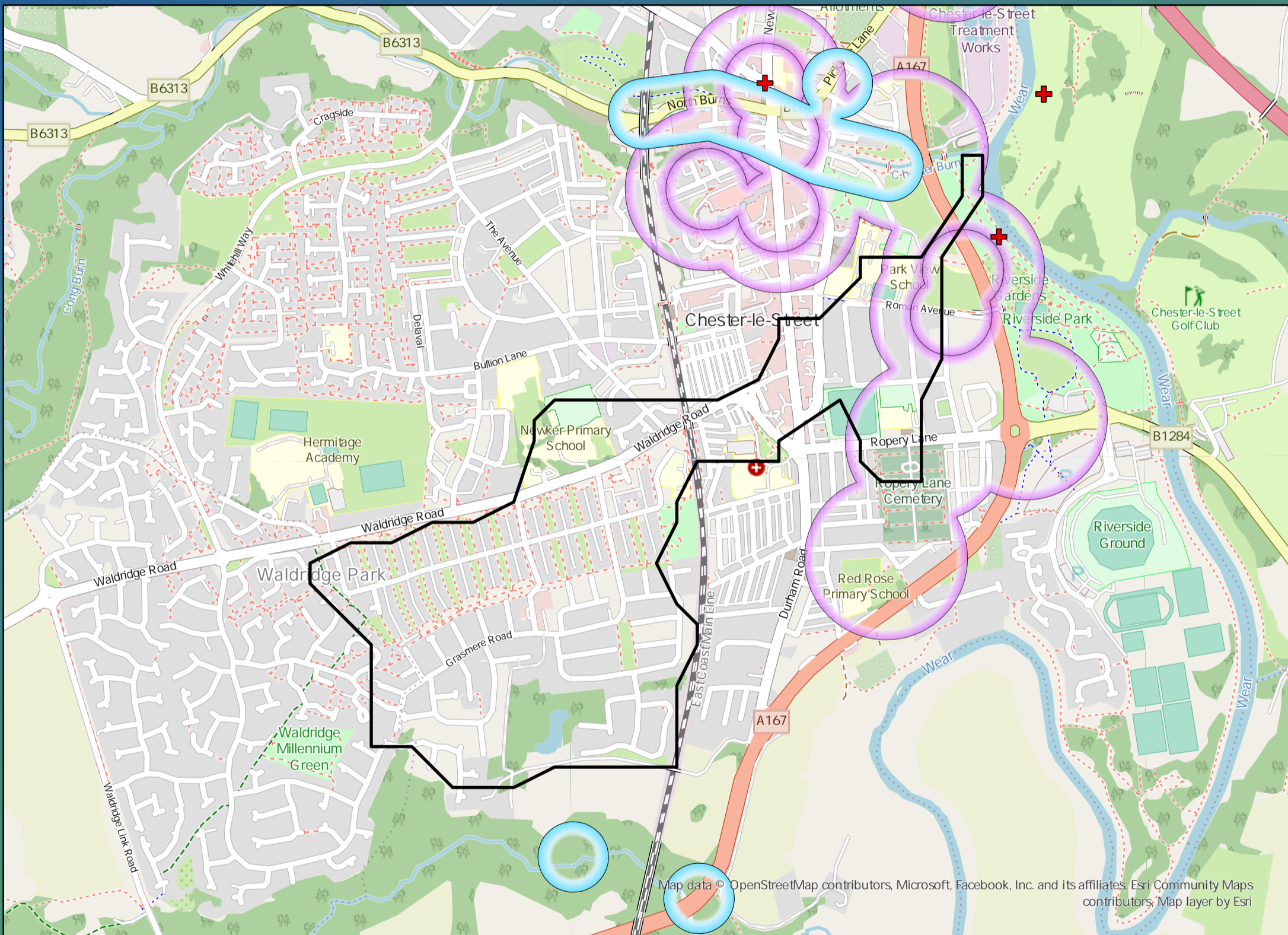
£3,820,000

Benefit

DWMP Drainage Community Summary Chester Le Street



<p>Properties at Risk of Flooding Internally</p>	2020 13	<p>Storm overflows spilling to Rivers</p>	<p>Storm overflows spilling to Bathing Waters</p>	<p>Manholes at Risk of Pollution</p>	<p>Number of spills to the Environment</p>
	2045 0	<p>Site of Special Scientific Interest</p>	<p>Strategic Area of Conservation</p>	<p>Strategic Area for Ecology</p>	
<p>Post Investment</p>	0	No	No	No	<p>Post Investment</p>
	0				0



Opportunities

- 3rd Party Stakeholder
- WINEP Programme
- Storm Overflow Programme
- Blue Green Corridor
- Storm Overflow Removal
- Drainage Communities

This is drainage community reference DC_06 which is within the Chester Le Street area.
 The drainage community is classified as low priority based upon it containing a river water asset discharging to an area without environmental concerns.
 The DWMP recommends that storage at the storm overflow(s) and storage in the catchment is created to manage and improve spill and flooding performance.
 The application of growth in the catchment has shown that no investment is required at the sewage treatment works.

£870,000

Cost

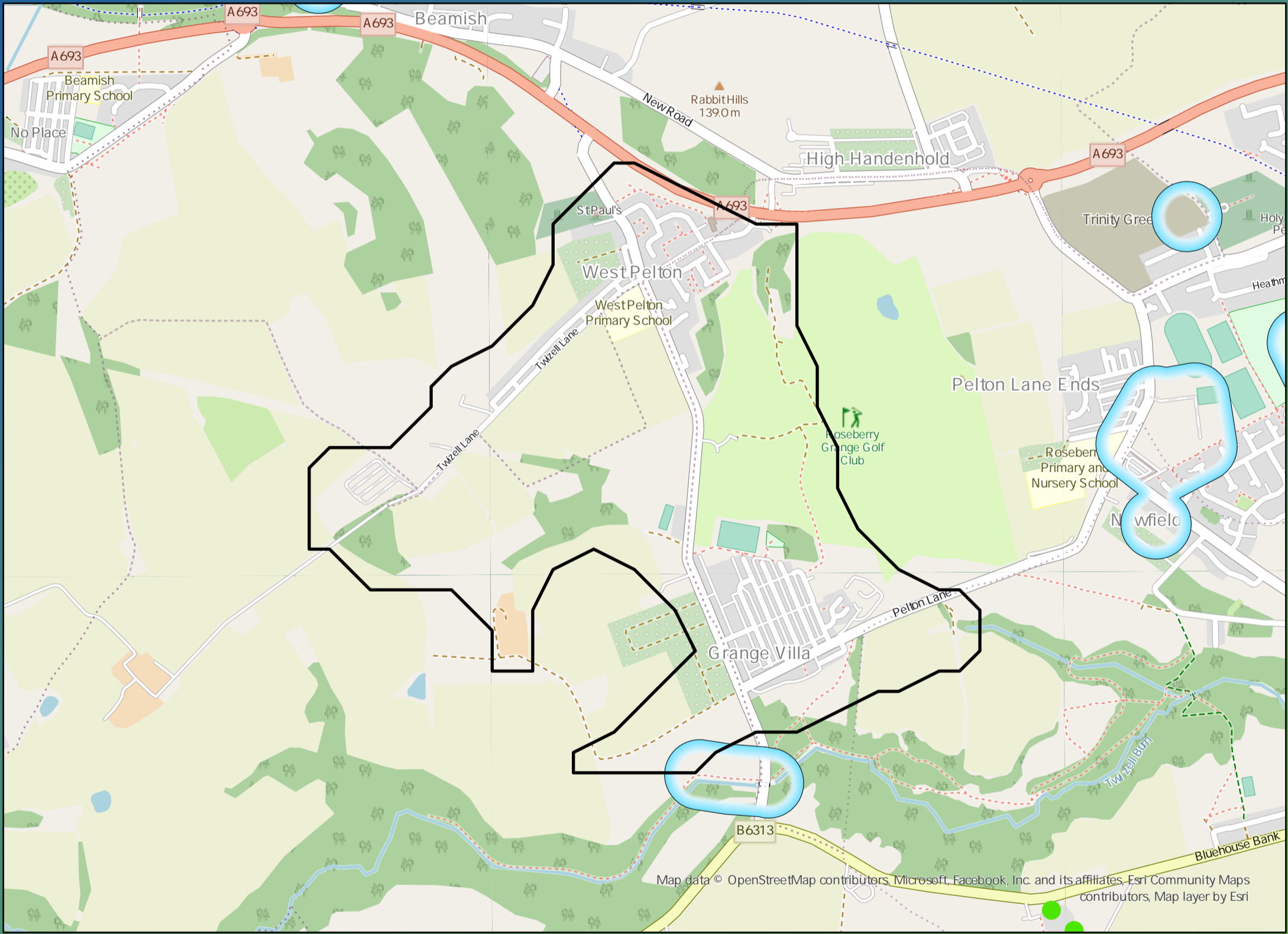
£460,000

Benefit

DWMP Drainage Community Summary Chester Le Street



<p>Properties at Risk of Flooding Internally</p>	2020 16	<p>Storm overflows spilling to Rivers</p>	2 2	<p>Storm overflows spilling to Bathing Waters</p>	0 0	<p>Manholes at Risk of Pollution</p>	7 7	<p>Number of spills to the Environment</p>	2020 62
	2045 22	<p>Site of Special Scientific Interest</p>	No No	<p>Strategic Area of Conservation</p>	No No	<p>Strategic Area for Ecology</p>	No No		2045 62
	Post Investment 0								Post Investment 20



Opportunities

- 3rd Party Stakeholder
- WINEP Programme
- Storm Overflow Programme
- Blue Green Corridor
- Storm Overflow Removal
- Drainage Communities

This is drainage community reference DC_07 which is within the Chester Le Street area.
 The drainage community is classified as low priority based upon it containing a river water asset discharging to an area without environmental concerns.
 The DWMP recommends that storage at the storm overflow(s) and storage in the catchment is created to manage and improve spill and flooding performance.
 The application of growth in the catchment has shown that no investment is required at the sewage treatment works.

£2,660,000

Cost

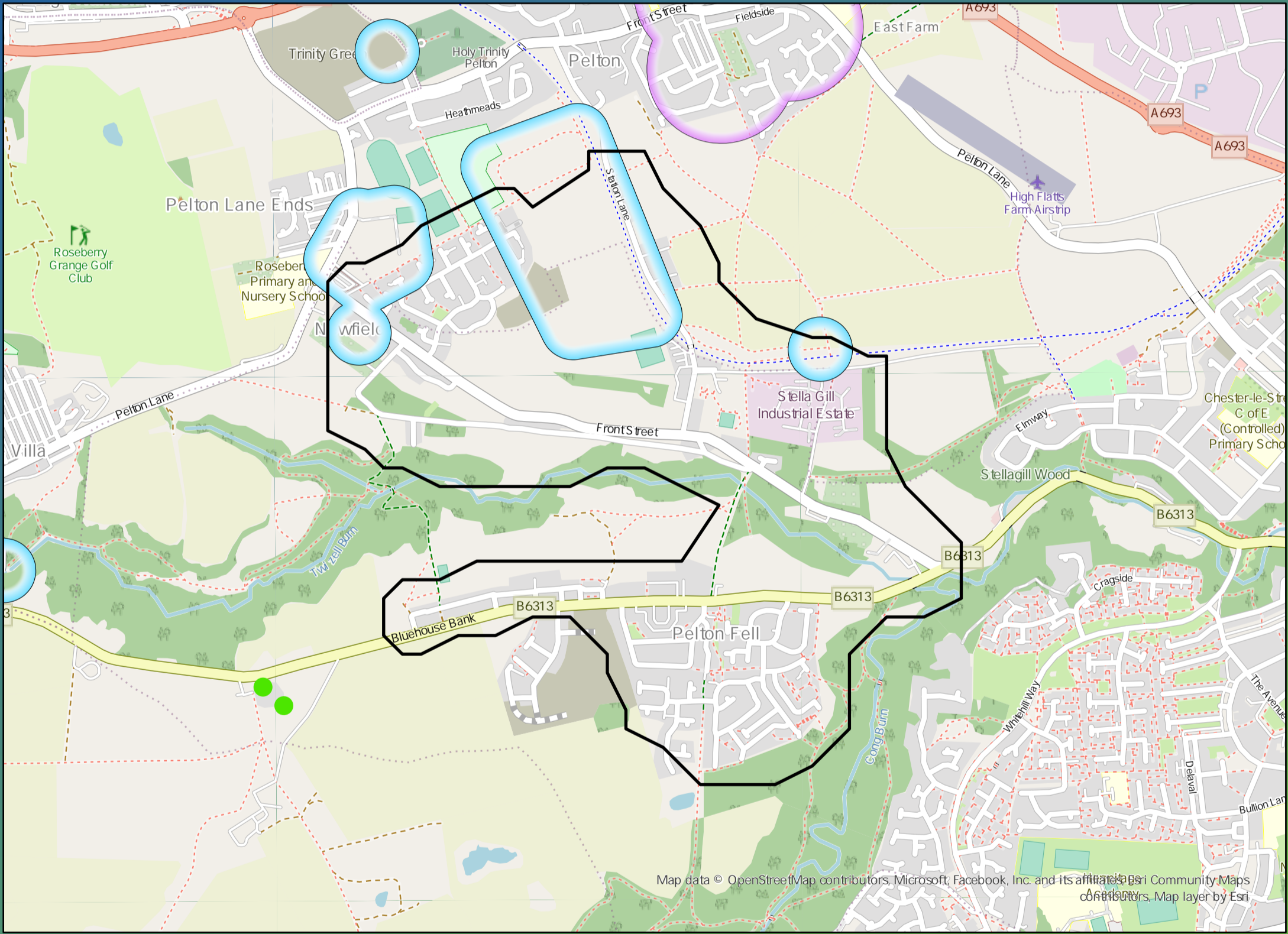
£8,410,000

Benefit

DWMP Drainage Community Summary Chester Le Street



<p>Properties at Risk of Flooding Internally</p>	2020 5	<p>2</p> <p>Storm overflows spilling to Rivers</p>	<p>0</p> <p>Storm overflows spilling to Bathing Waters</p>	<p>3</p> <p>Manholes at Risk of Pollution</p>	<p>Number of spills to the Environment</p>	2020 53
	2045 9	<p>No</p> <p>Site of Special Scientific Interest</p>	<p>No</p> <p>Strategic Area of Conservation</p>	<p>No</p> <p>Strategic Area for Ecology</p>		2045 53
	Post Investment 0				Post Investment 20	



Opportunities

- 3rd Party Stakeholder
- WINEP Programme
- Storm Overflow Programme
- Blue Green Corridor
- Storm Overflow Removal
- Drainage Communities

This is drainage community reference DC_08 which is within the Chester Le Street area.
 The drainage community is classified as low priority based upon it containing a river water asset discharging to an area without environmental concerns.
 The DWMP recommends that storage at the storm overflow(s) and storage in the catchment is created to manage and improve spill and flooding performance.
 The application of growth in the catchment has shown that no investment is required at the sewage treatment works.

£1,850,000

Cost

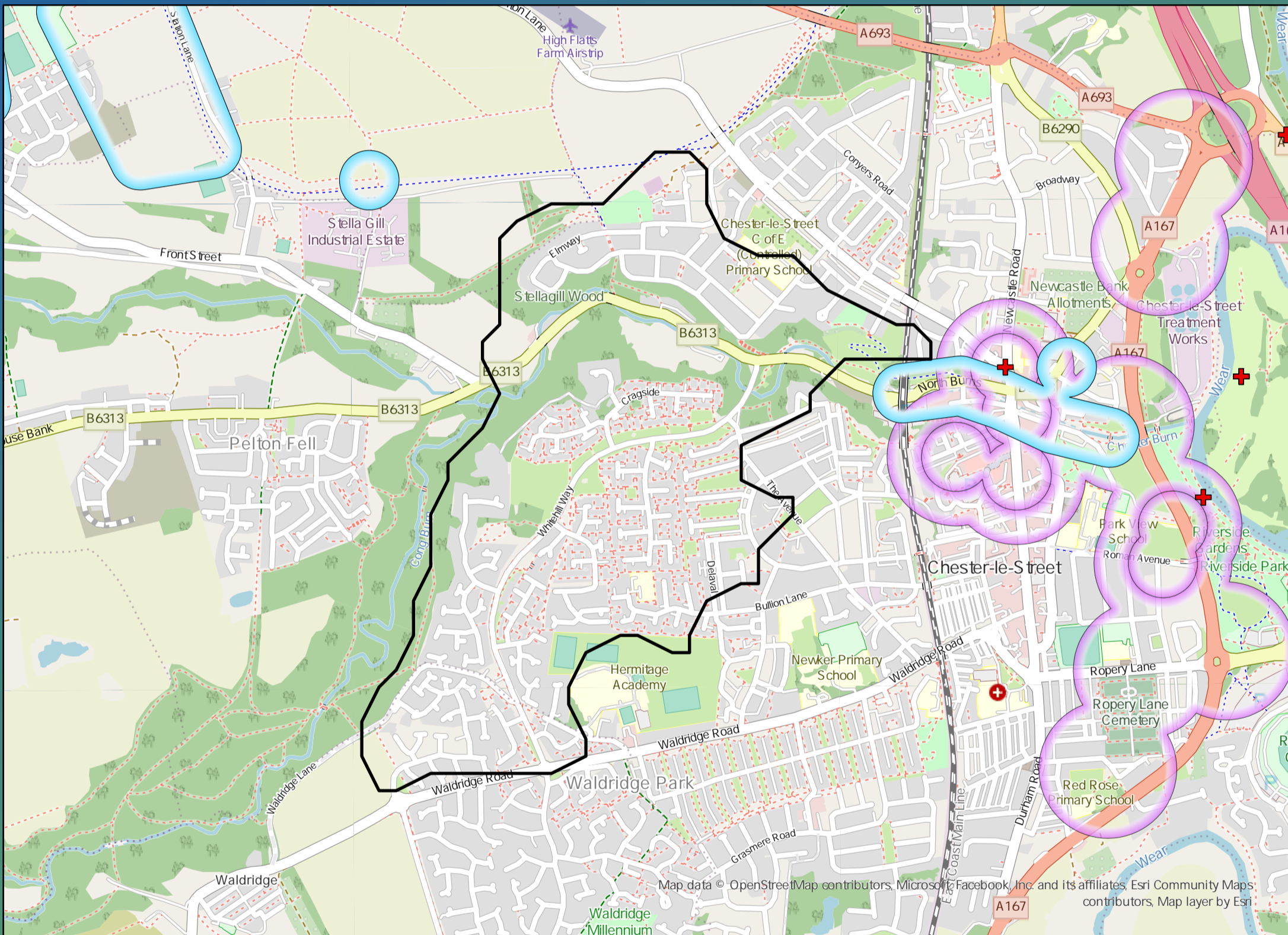
£6,810,000

Benefit

DWMP Drainage Community Summary Chester Le Street



<p>Properties at Risk of Flooding Internally</p>	2020 32	<p>Storm overflows spilling to Rivers</p>	<p>Storm overflows spilling to Bathing Waters</p>	<p>Manholes at Risk of Pollution</p>	<p>Number of spills to the Environment</p>
	2045 0	<p>Site of Special Scientific Interest</p>	<p>Strategic Area of Conservation</p>	<p>Strategic Area for Ecology</p>	
0 Post Investment 0	No	No	No	No	0



Opportunities

- 3rd Party Stakeholder
- WINEP Programme
- Storm Overflow Programme
- Blue Green Corridor
- Storm Overflow Removal
- Drainage Communities

This is drainage community reference DC_09 which is within the Chester Le Street area.
 The drainage community is classified as low priority based upon it containing a river water asset discharging to an area without environmental concerns.
 The DWMP recommends that storage at the storm overflow(s) and storage in the catchment is created to manage and improve spill and flooding performance.
 The application of growth in the catchment has shown that no investment is required at the sewage treatment works.



£1,100,000

Cost



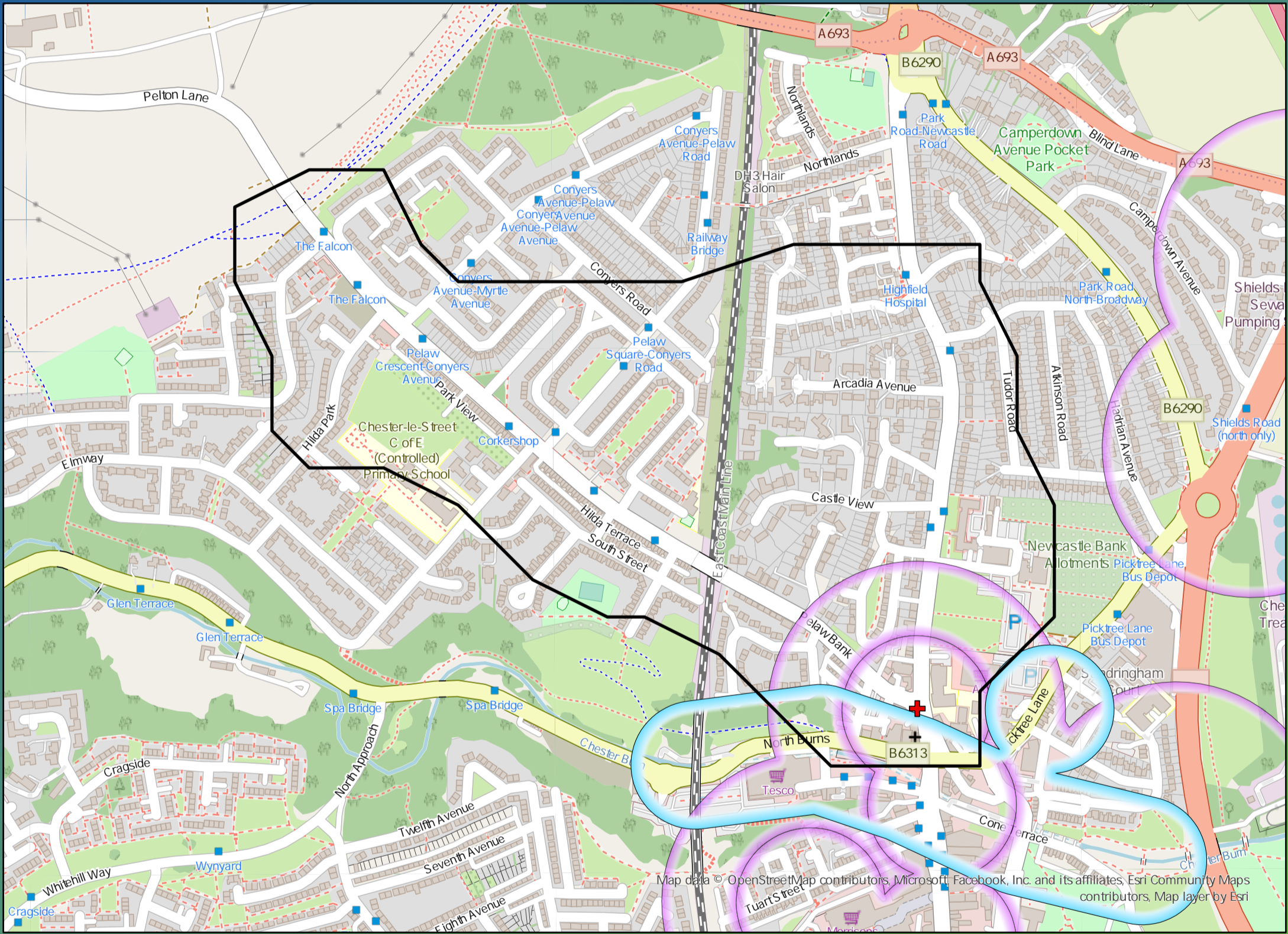
£1,000,000

Benefit

DWMP Drainage Community Summary Chester Le Street



<p>Properties at Risk of Flooding Internally</p>	2020 13	<p>Storm overflows spilling to Rivers</p> <p>1</p>	<p>Storm overflows spilling to Bathing Waters</p> <p>0</p>	<p>Manholes at Risk of Pollution</p> <p>4</p>	<p>Number of spills to the Environment</p>	2020 14
	2045 17	<p>Site of Special Scientific Interest</p> <p>No</p>	<p>Strategic Area of Conservation</p> <p>No</p>	<p>Strategic Area for Ecology</p> <p>No</p>		2045 14
	Post Investment 0				Post Investment 10	



Opportunities

- 3rd Party Stakeholder
- WINEP Programme
- Storm Overflow Programme
- Blue Green Corridor
- Storm Overflow Removal
- Drainage Communities

This is drainage community reference DC_10 which is within the Chester Le Street area.

The drainage community is classified as low priority based upon it containing a river water asset discharging to an area without environmental concerns.

The DWMP recommends that storage at the storm overflow(s) and storage in the catchment is created to manage and improve spill and flooding performance.

The application of growth in the catchment has shown that no investment is required at the sewage treatment works.

£2,000,000

Cost

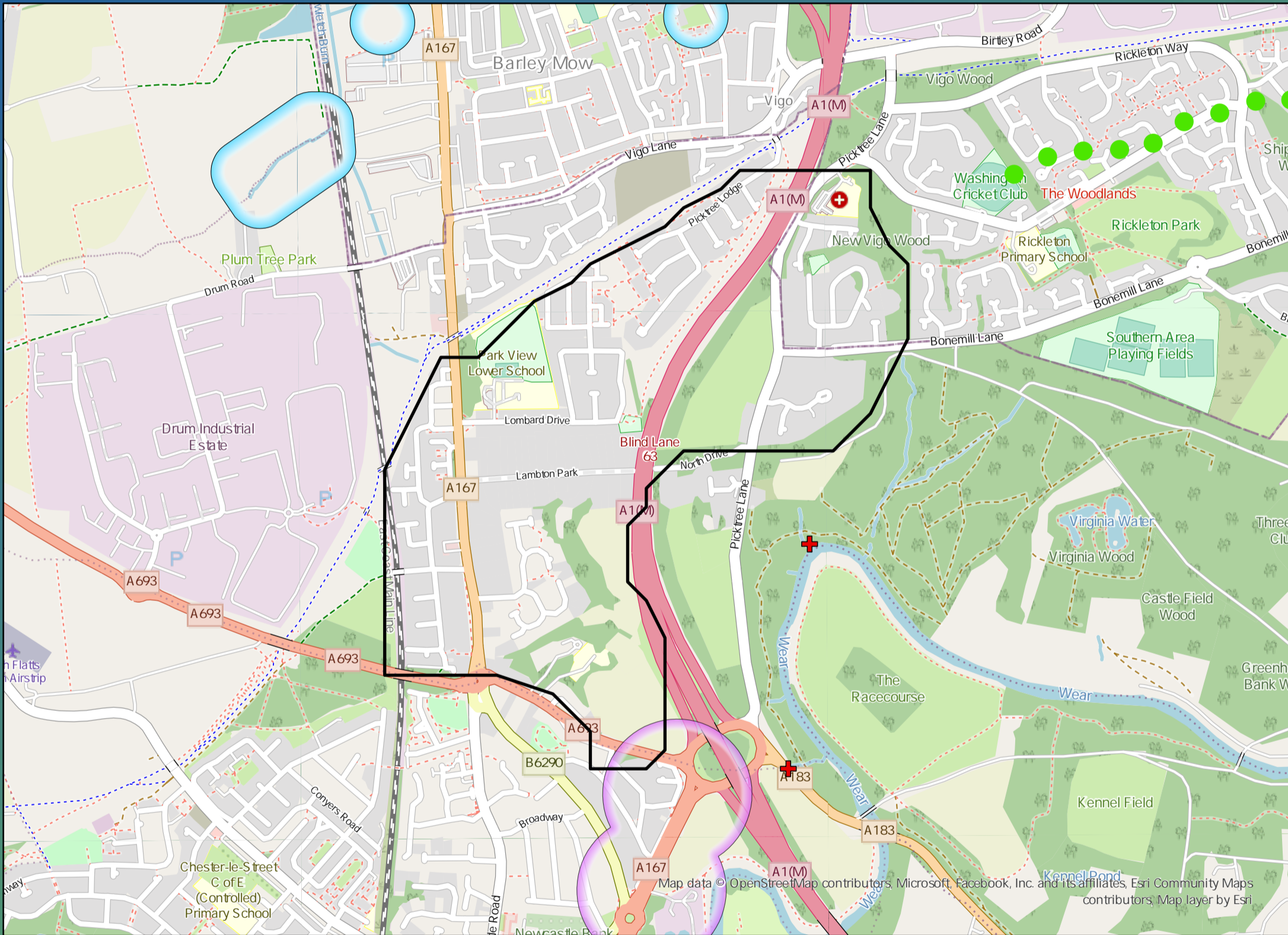
£2,370,000

Benefit

DWMP Drainage Community Summary Chester Le Street



<p>Properties at Risk of Flooding Internally</p>	2020 32	<p>2</p> <p>Storm overflows spilling to Rivers</p>	<p>0</p> <p>Storm overflows spilling to Bathing Waters</p>	<p>0</p> <p>Manholes at Risk of Pollution</p>	<p>Number of spills to the Environment</p>
	2045 42	<p>No</p> <p>Site of Special Scientific Interest</p>	<p>No</p> <p>Strategic Area of Conservation</p>	<p>Yes</p> <p>Strategic Area for Ecology</p>	
	Post Investment 0				



Opportunities

- 3rd Party Stakeholder
- WINEP Programme
- Storm Overflow Programme
- Blue Green Corridor
- Storm Overflow Removal
- Drainage Communities

This is drainage community reference DC_11 which is within the Chester Le Street area.

The drainage community is classified as low priority based upon it containing a river water asset discharging to an area without environmental concerns.

The DWMP recommends that storage at the storm overflow(s) and storage in the catchment is created to manage and improve spill and flooding performance.

The application of growth in the catchment has shown that no investment is required at the sewage treatment works.



Cost

£1,600,000



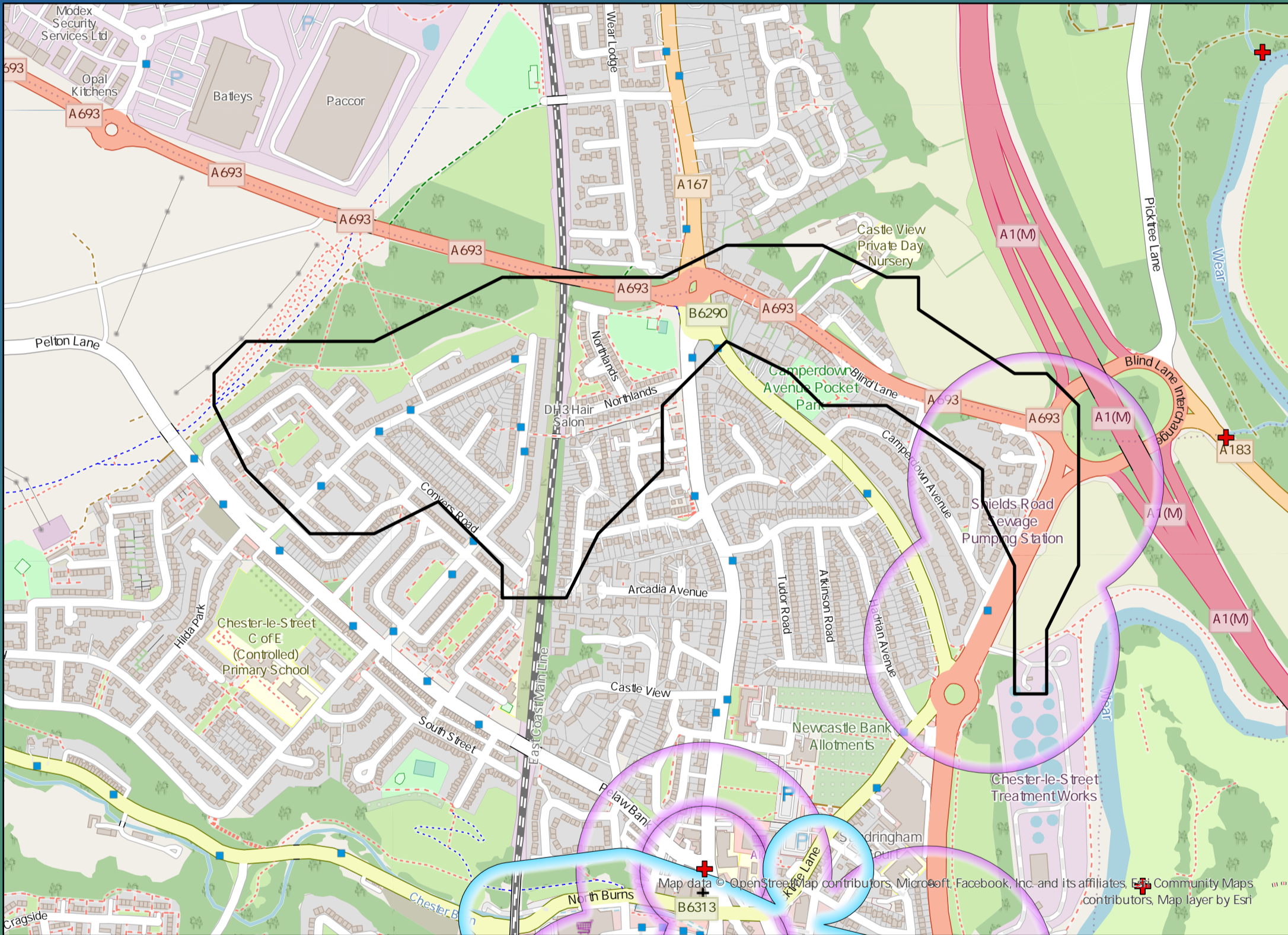
Benefit

£1,160,000

DWMP Drainage Community Summary Chester Le Street



<p>Properties at Risk of Flooding Internally</p>	2020 12	<p>Storm overflows spilling to Rivers</p>	0	<p>Storm overflows spilling to Bathing Waters</p>	0	<p>Manholes at Risk of Pollution</p>	0	<p>Number of spills to the Environment</p>	2020 0
	2045 0	<p>Site of Special Scientific Interest</p>	No	<p>Strategic Area of Conservation</p>	No	<p>Strategic Area for Ecology</p>	No		2045 0



Opportunities

- 3rd Party Stakeholder
- WINEP Programme
- Storm Overflow Programme
- Blue Green Corridor
- Storm Overflow Removal
- Drainage Communities

This is drainage community reference DC_12 which is within the Chester Le Street area.
 The drainage community is classified as low priority based upon it containing a river water asset discharging to an area without environmental concerns.
 The DWMP recommends that storage at the storm overflow(s) and storage in the catchment is created to manage and improve spill and flooding performance.
 The application of growth in the catchment has shown that no investment is required at the sewage treatment works.

£1,080,000

Cost

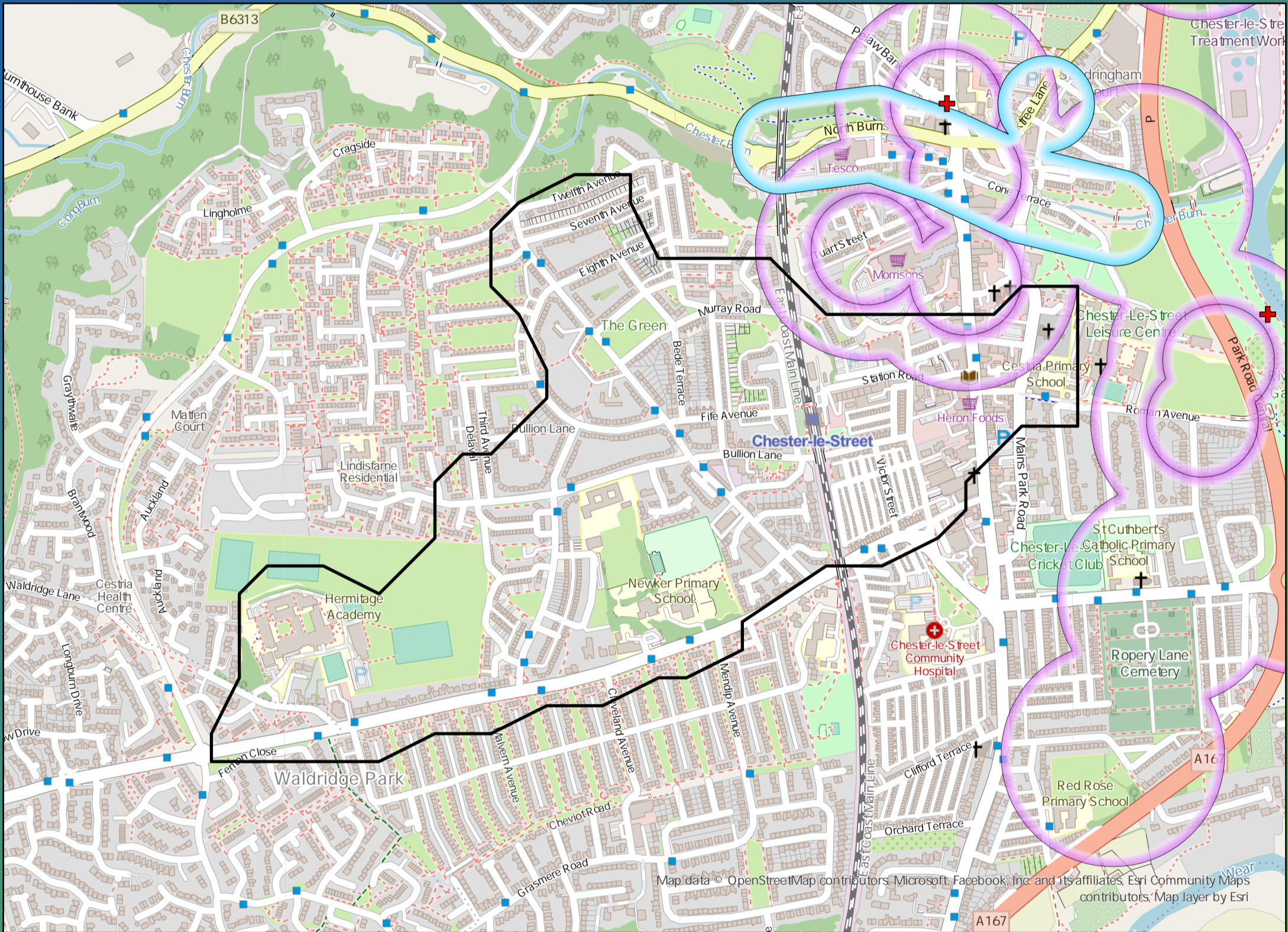
£280,000

Benefit

DWMP Drainage Community Summary Chester Le Street



<p>Properties at Risk of Flooding Internally</p>	2020 37	<p>Storm overflows spilling to Rivers</p>	<p>Storm overflows spilling to Bathing Waters</p>	<p>Manholes at Risk of Pollution</p>	<p>Number of spills to the Environment</p>
	2045 0	<p>Site of Special Scientific Interest</p>	<p>Strategic Area of Conservation</p>	<p>Strategic Area for Ecology</p>	
	<p>Post Investment 0</p>	No	No	No	2045 0
	0				Post Investment 0



Opportunities

- 3rd Party Stakeholder
- WINEP Programme
- Storm Overflow Programme
- Blue Green Corridor
- Storm Overflow Removal
- Drainage Communities

This is drainage community reference DC_13 which is within the Chester Le Street area.
 The drainage community is classified as low priority based upon it containing a river water asset discharging to an area without environmental concerns.
 The DWMP recommends that storage at the storm overflow(s) and storage in the catchment is created to manage and improve spill and flooding performance.
 The application of growth in the catchment has shown that no investment is required at the sewage treatment works.

£2,140,000

Cost

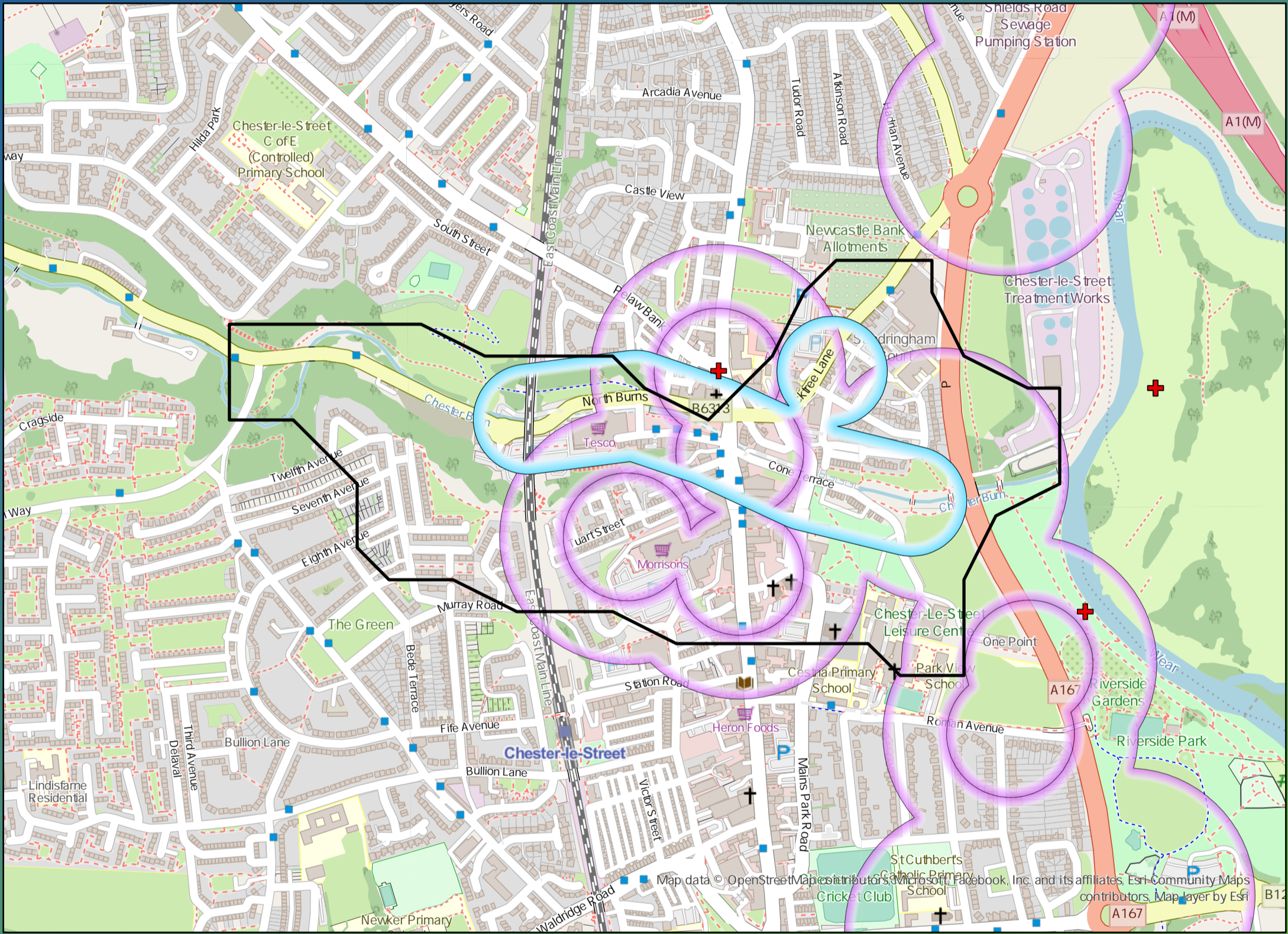
£910,000

Benefit

DWMP Drainage Community Summary Chester Le Street



<p>Properties at Risk of Flooding Internally</p>	2020 6	<p>3</p> <p>Storm overflows spilling to Rivers</p>	<p>0</p> <p>Storm overflows spilling to Bathing Waters</p>	<p>12</p> <p>Manholes at Risk of Pollution</p>	<p>Number of spills to the Environment</p>	2020 15
	2045 13	<p>No</p> <p>Site of Special Scientific Interest</p>	<p>No</p> <p>Strategic Area of Conservation</p>	<p>Yes</p> <p>Strategic Area for Ecology</p>		2045 15
	Post Investment 0				Post Investment 30	



Opportunities

- 3rd Party Stakeholder
- WINEP Programme
- Storm Overflow Programme
- Blue Green Corridor
- Storm Overflow Removal
- Drainage Communities

This is drainage community reference DC_14 which is within the Chester Le Street area.

The drainage community is classified as high priority based upon it containing a river water asset discharging to an environmentally sensitive area.

The DWMP recommends that no investment is required due to the performance of the storm overflow and level of internal property flood risk in the catchment. The catchment will be monitored for future change.

The application of growth in the catchment has shown that no investment is required at the sewage treatment works.

£2,550,000

Cost

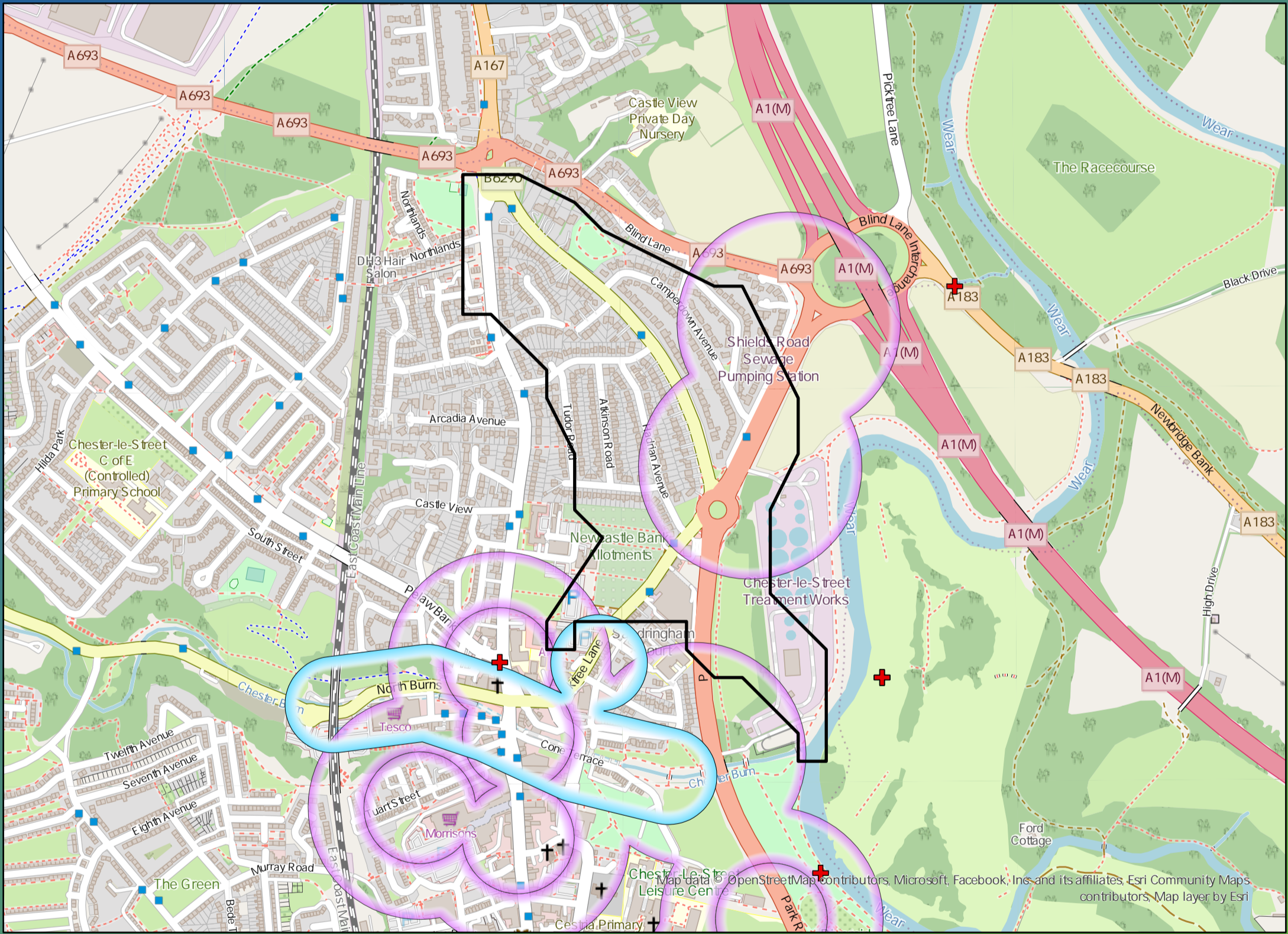
£2,570,000

Benefit

DWMP Drainage Community Summary Chester Le Street



<p>Properties at Risk of Flooding Internally</p>	2020 4	<p>Storm overflows spilling to Rivers</p>	<p>Storm overflows spilling to Bathing Waters</p>	<p>Manholes at Risk of Pollution</p>	<p>Number of spills to the Environment</p>
	2045 7 Post Investment 0	<p>Site of Special Scientific Interest</p>	<p>Strategic Area of Conservation</p>	<p>Strategic Area for Ecology</p>	



Opportunities

- 3rd Party Stakeholder
- WINEP Programme
- Storm Overflow Programme
- Blue Green Corridor
- Storm Overflow Removal
- Drainage Communities

This is drainage community reference DC_15 which is within the Chester Le Street area. The drainage community is classified as high priority based upon it containing a river water asset discharging to an environmentally sensitive area. The DWMP recommends that storage at the storm overflow(s) and storage in the catchment is created to manage and improve spill and flooding performance. The application of growth in the catchment has shown that no investment is required at the sewage treatment works.

£1,760,000

Cost

£4,420,000

Benefit