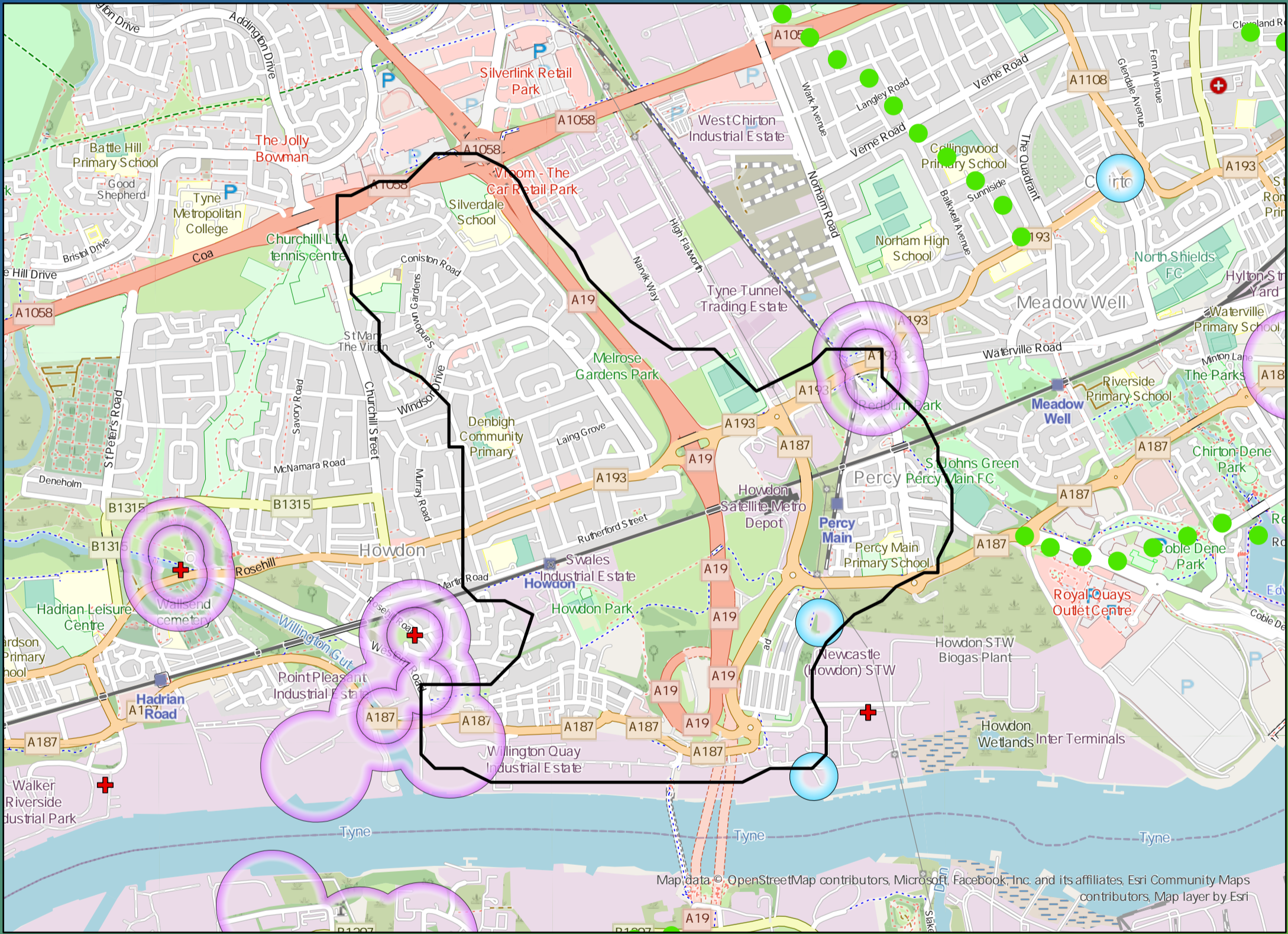


DWMP Drainage Community Summary Howdon



<p>Properties at Risk of Flooding Internally</p>	2020 198	<p>Storm overflows spilling to Rivers</p>	4	<p>Storm overflows spilling to Bathing Waters</p>	0	<p>Manholes at Risk of Pollution</p>	10	<p>Number of spills to the Environment</p>	2020 158
	2045 239	<p>Site of Special Scientific Interest</p>	No	<p>Strategic Area of Conservation</p>	No	<p>Strategic Area for Ecology</p>	No		2045 158
	Post Investment 0								Post Investment 40



Opportunities

- 3rd Party Stakeholder
- WINEP Programme
- Storm Overflow Programme
- Blue Green Corridor
- Storm Overflow Removal
- Drainage Communities

This is drainage community reference DC_01 which is within the Howdon area.
 The drainage community is classified as low priority based upon it containing a river water asset discharging to an area without environmental concerns.
 The DWMP recommends that storage at the storm overflow(s) and storage in the catchment is created to manage and improve spill and flooding performance.
 The application of growth in the catchment has shown that no investment is required at the sewage treatment works.

£7,530,000

Cost

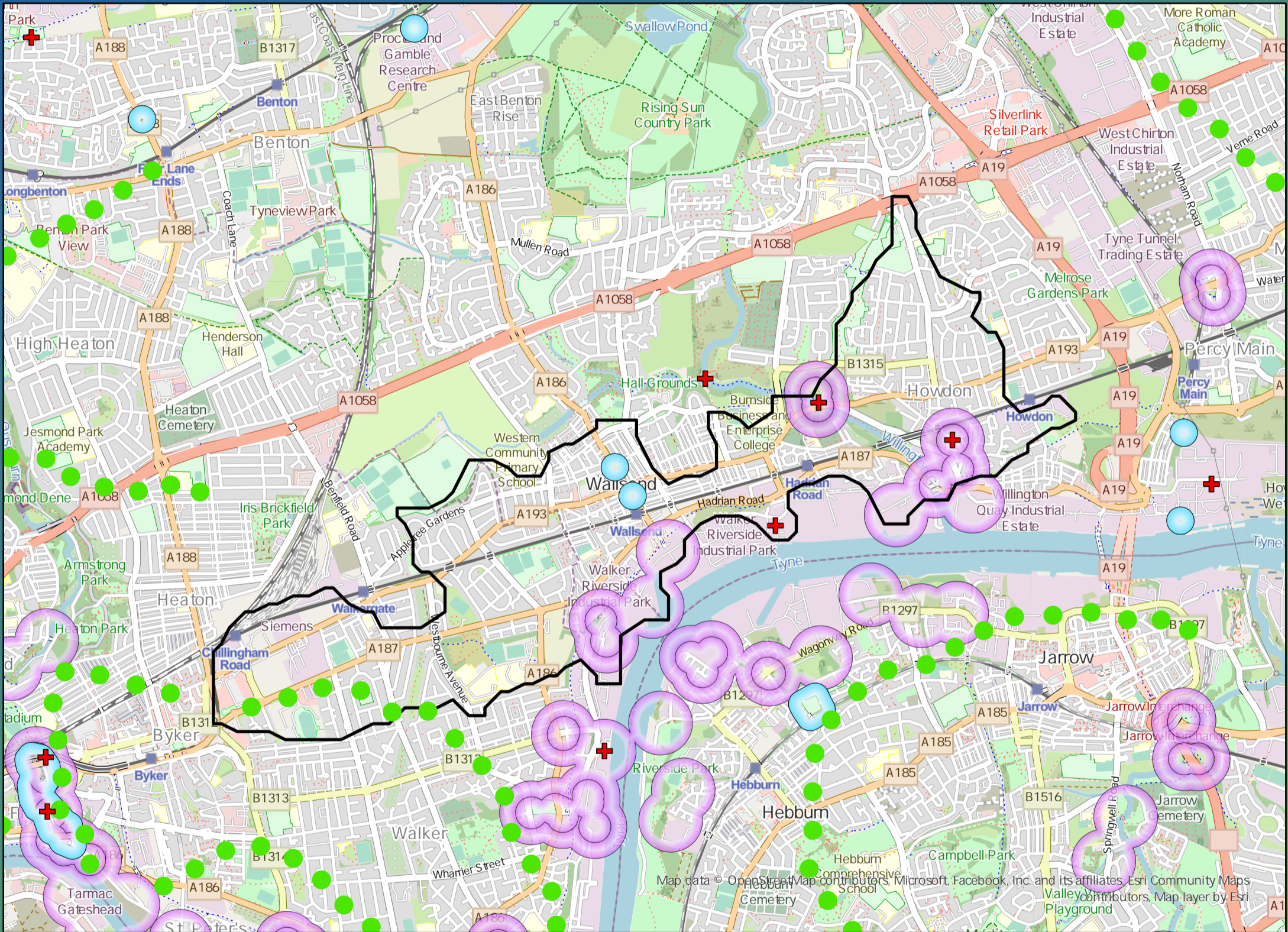
£28,520,000

Benefit

DWMP Drainage Community Summary Howdon



<p>Properties at Risk of Flooding Internally</p>	2020 373	<p>Storm overflows spilling to Rivers</p>	6	<p>Storm overflows spilling to Bathing Waters</p>	0	<p>Manholes at Risk of Pollution</p>	17	<p>Number of spills to the Environment</p>	2020 0
	2045 618	<p>Site of Special Scientific Interest</p>	No	<p>Strategic Area of Conservation</p>	No	<p>Strategic Area for Ecology</p>	No		2045 0
	Post Investment 0								Post Investment 0



Opportunities

- 3rd Party Stakeholder
- WINEP Programme
- Storm Overflow Programme
- Blue Green Corridor
- Storm Overflow Removal
- Drainage Communities

This is drainage community reference DC_02 which is within the Howdon area.

The drainage community is classified as medium priority based upon it containing a RNAG asset discharging to an area without environmental concerns.

The DWMP recommends that storage at the storm overflow(s) and storage in the catchment is created to manage and improve spill and flooding performance.

The application of growth in the catchment has shown that no investment is required at the sewage treatment works.



Cost

£42,130,000



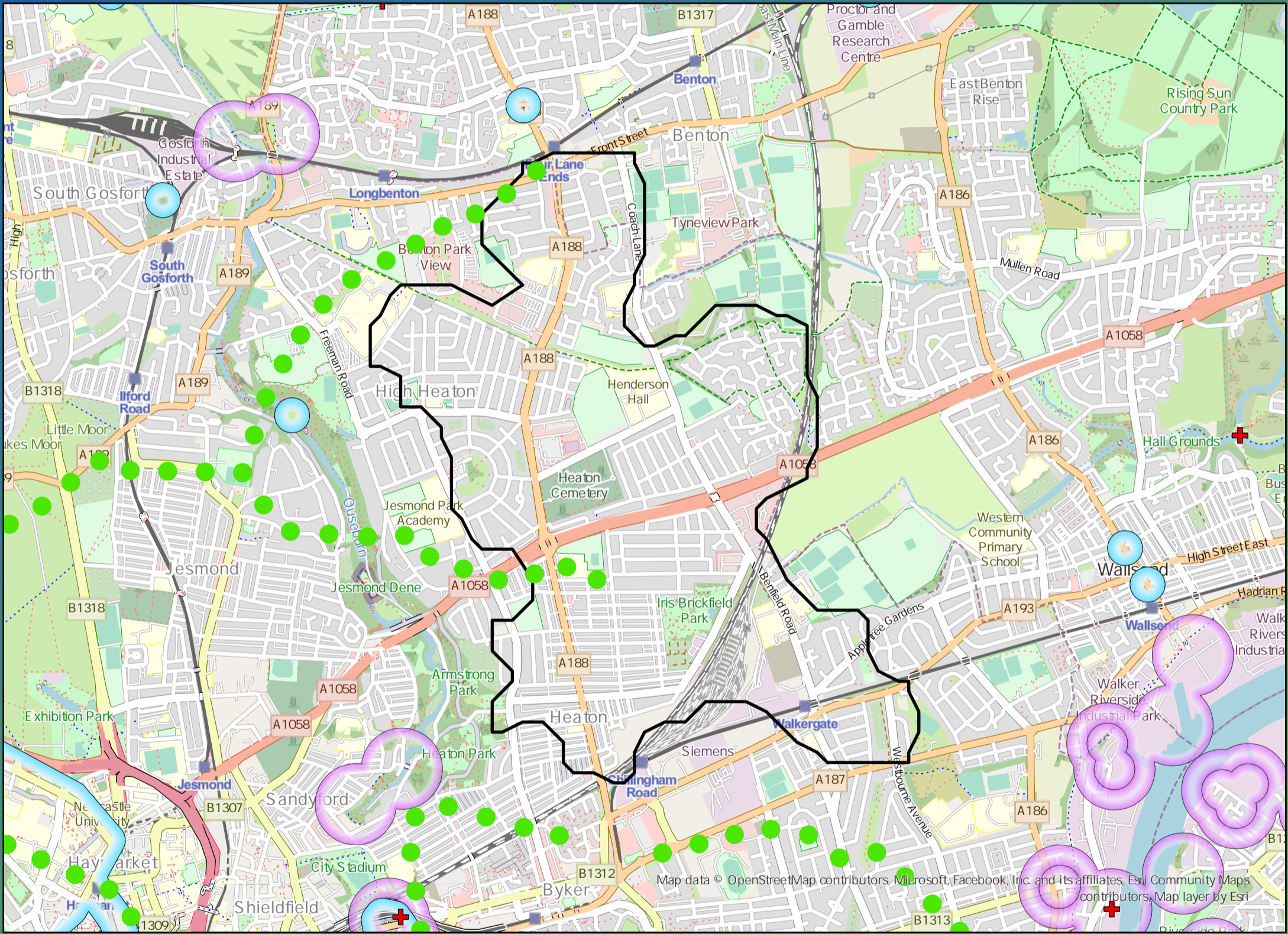
Benefit

£56,620,000

DWMP Drainage Community Summary Howdon



<p>Properties at Risk of Flooding Internally</p>	2020 216	<p>2</p> <p>Storm overflows spilling to Rivers</p>	<p>0</p> <p>Storm overflows spilling to Bathing Waters</p>	<p>13</p> <p>Manholes at Risk of Pollution</p>	<p>Number of spills to the Environment</p>	2020 92
	2045 301	<p>No</p> <p>Site of Special Scientific Interest</p>	<p>No</p> <p>Strategic Area of Conservation</p>	<p>No</p> <p>Strategic Area for Ecology</p>		2045 92
	Post Investment 0				Post Investment 20	



Opportunities

- 3rd Party Stakeholder
- WINEP Programme
- Storm Overflow Programme
- Blue Green Corridor
- Storm Overflow Removal
- Drainage Communities

This is drainage community reference DC_04 which is within the Howdon area.

The drainage community is classified as low priority based upon it containing a river water asset discharging to an area without environmental concerns.

The DWMP recommends that storage at the storm overflow(s) and storage in the catchment is created to manage and improve spill and flooding performance.

The application of growth in the catchment has shown that no investment is required at the sewage treatment works.

£8,820,000

Cost

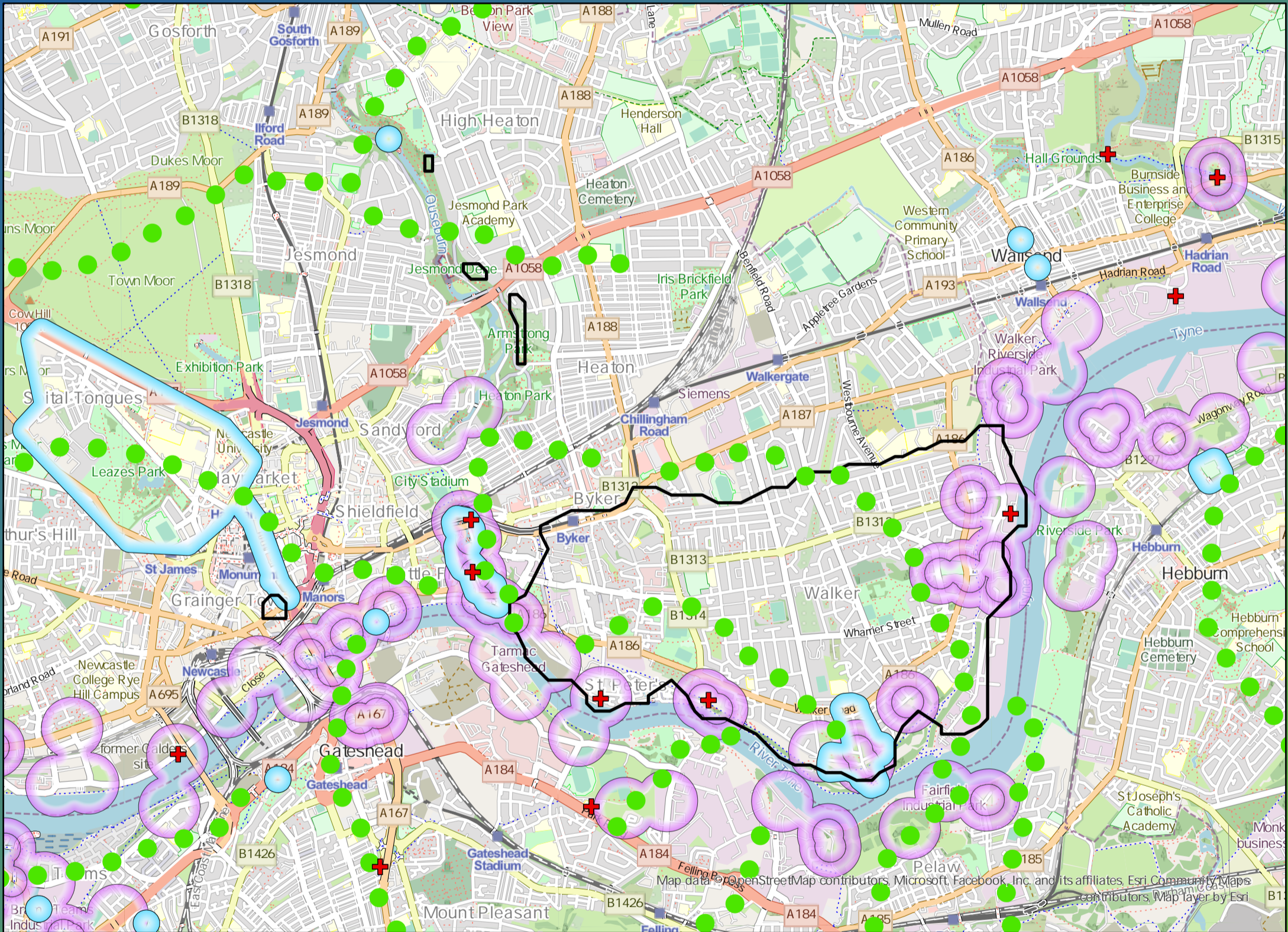
£22,710,000

Benefit

DWMP Drainage Community Summary Howdon



<p>Properties at Risk of Flooding Internally</p>	2020 1,84	<p>13 Storm overflows spilling to Rivers</p>	<p>0 Storm overflows spilling to Bathing Waters</p>	<p>0 Manholes at Risk of Pollution</p>	<p>Number of spills to the Environment</p>
	2045 207 Post Investment 0	<p>No Site of Special Scientific Interest</p>	<p>No Strategic Area of Conservation</p>	<p>No Strategic Area for Ecology</p>	



Opportunities

- 3rd Party Stakeholder
- WINEP Programme
- Storm Overflow Programme
- Blue Green Corridor
- Storm Overflow Removal
- Drainage Communities

This is drainage community reference DC_05 which is within the Howdon area.
 The drainage community is classified as low priority based upon it containing a river water asset discharging to an area without environmental concerns.
 The DWMP recommends that storage at the storm overflow(s) and storage in the catchment is created to manage and improve spill and flooding performance.
 The application of growth in the catchment has shown that no investment is required at the sewage treatment works.

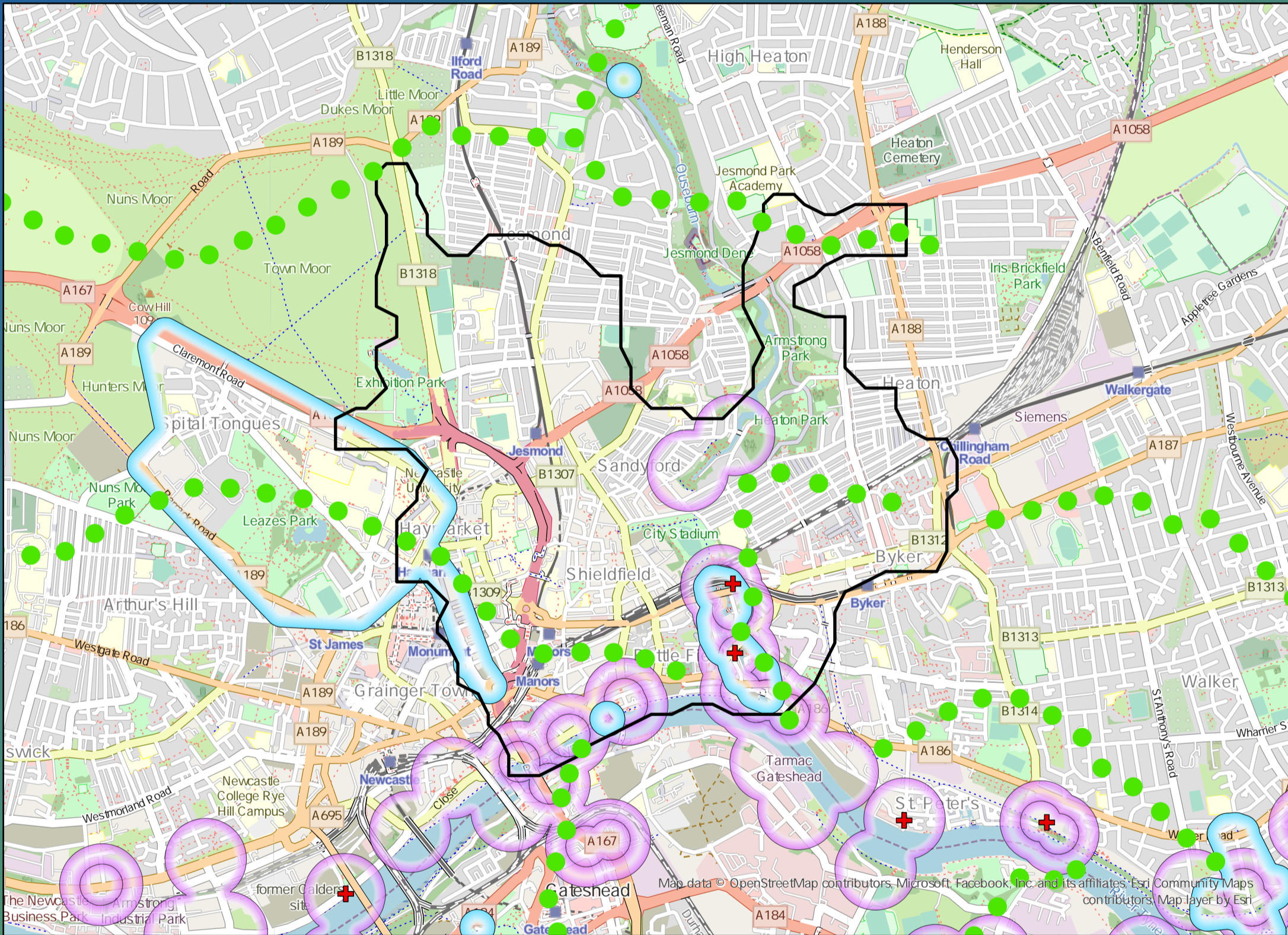
£16,280,000
Cost

£253,800,000
Benefit

DWMP Drainage Community Summary Howdon



<p>Properties at Risk of Flooding Internally</p>	2020 451	<p>Storm overflows spilling to Rivers</p>	<p>Storm overflows spilling to Bathing Waters</p>	<p>Manholes at Risk of Pollution</p>	<p>Number of spills to the Environment</p>
	2045 529 Post Investment 0	9	0	1	
		<p>Site of Special Scientific Interest</p>	<p>Strategic Area of Conservation</p>	<p>Strategic Area for Ecology</p>	
		No	No	No	



Opportunities

- 3rd Party Stakeholder
- WINEP Programme
- Storm Overflow Programme
- Blue Green Corridor
- Storm Overflow Removal
- Drainage Communities

This is drainage community reference DC_06 which is within the Howdon area.
 The drainage community is classified as medium priority based upon it containing a RNAG asset discharging to an area without environmental concerns.
 The DWMP recommends that storage at the storm overflow(s) and storage in the catchment is created to manage and improve spill and flooding performance.
 The application of growth in the catchment has shown that no investment is required at the sewage treatment works.

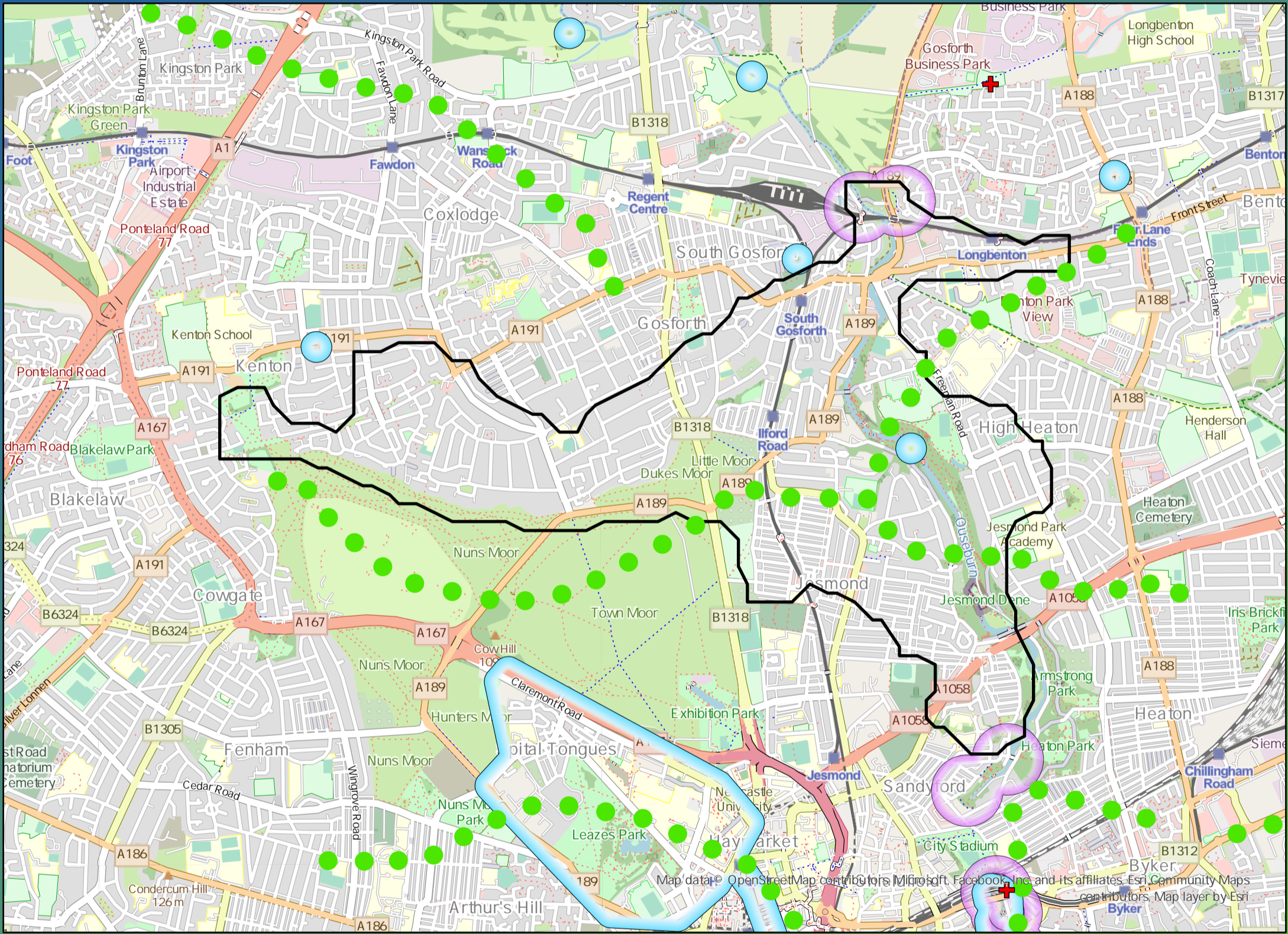
£46,980,000
Cost

£42,480,000
Benefit

DWMP Drainage Community Summary Howdon



<p>Properties at Risk of Flooding Internally</p>	2020 249	<p>3</p> <p>Storm overflows spilling to Rivers</p>	<p>0</p> <p>Storm overflows spilling to Bathing Waters</p>	<p>5</p> <p>Manholes at Risk of Pollution</p>	<p>Number of spills to the Environment</p>
	2045 276	<p>No</p> <p>Site of Special Scientific Interest</p>	<p>No</p> <p>Strategic Area of Conservation</p>	<p>No</p> <p>Strategic Area for Ecology</p>	
	0				



Opportunities

- 3rd Party Stakeholder
- WINEP Programme
- Storm Overflow Programme
- Blue Green Corridor
- Storm Overflow Removal
- Drainage Communities

This is drainage community reference DC_07 which is within the Howdon area.

The drainage community is classified as low priority based upon it containing a river water asset discharging to an area without environmental concerns.

The DWMP recommends that storage at the storm overflow(s) and storage in the catchment is created to manage and improve spill and flooding performance.

The application of growth in the catchment has shown that no investment is required at the sewage treatment works.

£2,850,000

Cost

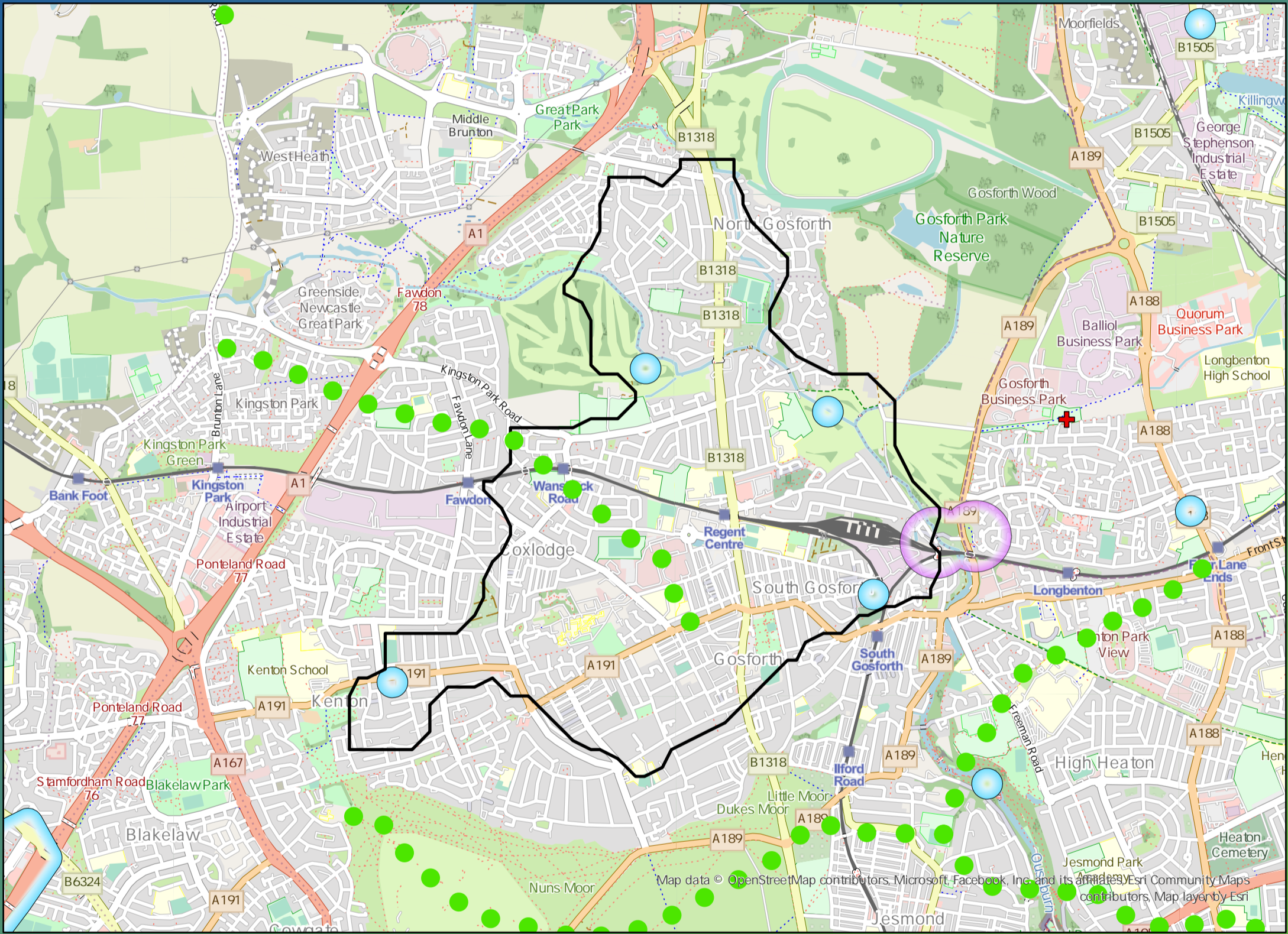
£12,120,000

Benefit

DWMP Drainage Community Summary Howdon



<p>Properties at Risk of Flooding Internally</p>	2020 61	<p>Storm overflows spilling to Rivers</p> <p>2</p>	<p>Storm overflows spilling to Bathing Waters</p> <p>0</p>	<p>Manholes at Risk of Pollution</p> <p>19</p>	<p>Number of spills to the Environment</p>	2020 0
	2045 70	<p>Site of Special Scientific Interest</p> <p>No</p>	<p>Strategic Area of Conservation</p> <p>No</p>	<p>Strategic Area for Ecology</p> <p>No</p>		2045 0
	Post Investment 0				Post Investment 0	



Opportunities

- 3rd Party Stakeholder
- WINEP Programme
- Storm Overflow Programme
- Blue Green Corridor
- Storm Overflow Removal
- Drainage Communities

This is drainage community reference DC_08 which is within the Howdon area.

The drainage community is classified as low priority based upon it containing a river water asset discharging to an area without environmental concerns.

The DWMP recommends that storage at the storm overflow(s) and storage in the catchment is created to manage and improve spill and flooding performance.

The application of growth in the catchment has shown that no investment is required at the sewage treatment works.

£7,800,000

Cost

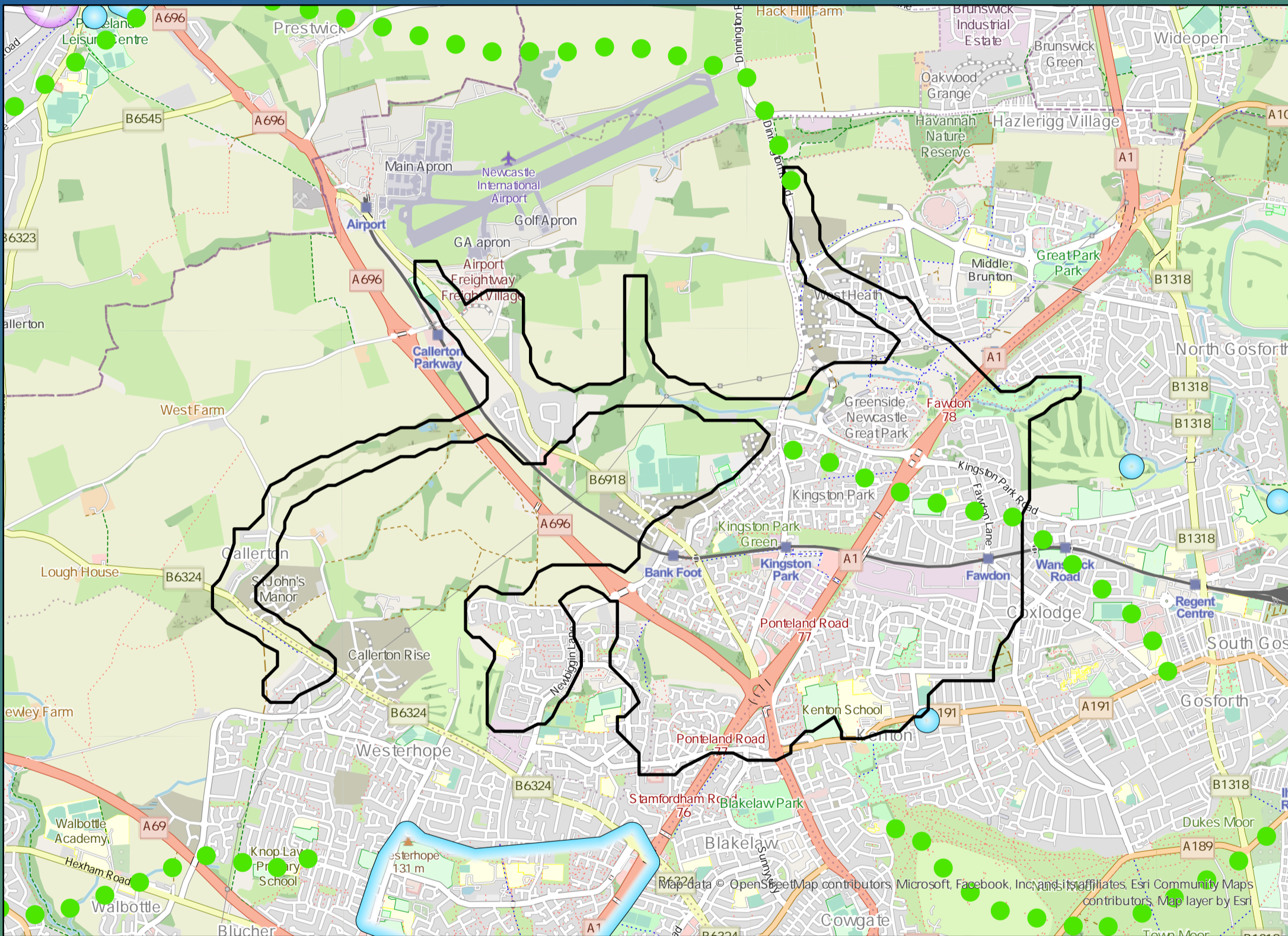
£1,360,000

Benefit

DWMP Drainage Community Summary Howdon



<p>Properties at Risk of Flooding Internally</p>	2020 116	<p>2</p> <p>Storm overflows spilling to Rivers</p>	<p>0</p> <p>Storm overflows spilling to Bathing Waters</p>	<p>6</p> <p>Manholes at Risk of Pollution</p>	<p>Number of spills to the Environment</p>	2020 0
	2045 140	<p>No</p> <p>Site of Special Scientific Interest</p>	<p>No</p> <p>Strategic Area of Conservation</p>	<p>No</p> <p>Strategic Area for Ecology</p>		2045 0
	Post Investment 0				Post Investment 0	



Opportunities

- 3rd Party Stakeholder
- WINEP Programme
- Storm Overflow Programme
- Blue Green Corridor
- Storm Overflow Removal
- Drainage Communities

This is drainage community reference DC_10 which is within the Howdon area.

The drainage community is classified as low priority based upon it containing a river water asset discharging to an area without environmental concerns.

The DWMP recommends that storage at the storm overflow(s) and storage in the catchment is created to manage and improve spill and flooding performance.

The application of growth in the catchment has shown that no investment is required at the sewage treatment works.



£1,190,000

Cost



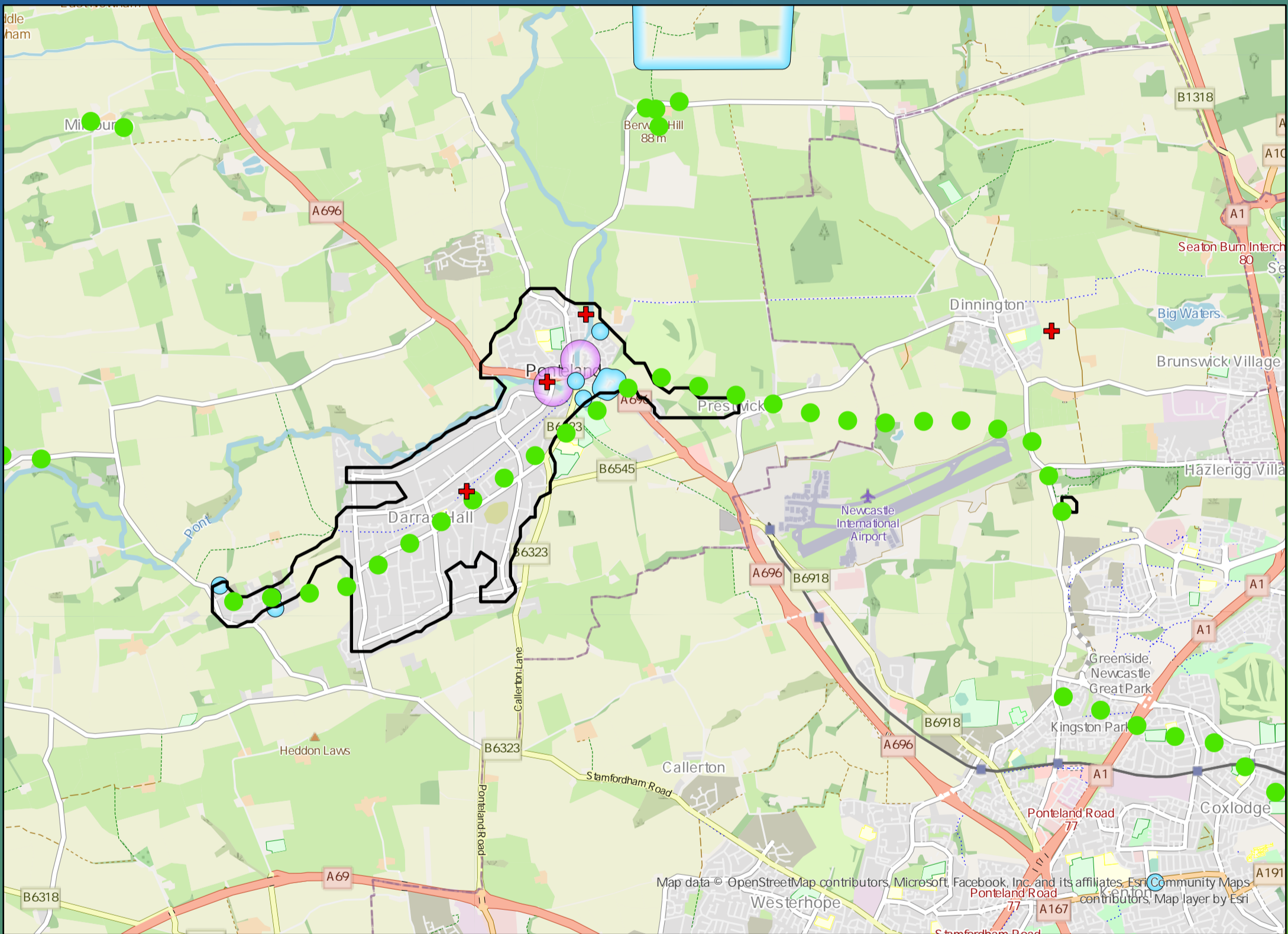
£2,680,000

Benefit

DWMP Drainage Community Summary Howdon



<p>Properties at Risk of Flooding Internally</p>	2020 216	<p>Storm overflows spilling to Rivers</p>	4	<p>Storm overflows spilling to Bathing Waters</p>	0	<p>Manholes at Risk of Pollution</p>	0	<p>Number of spills to the Environment</p>	2020 96
	2045 0	<p>Site of Special Scientific Interest</p>	Yes	<p>Strategic Area of Conservation</p>	No	<p>Strategic Area for Ecology</p>	No		2045 96
	Post Investment 0							Post Investment 40	



Opportunities

- 3rd Party Stakeholder
- WINEP Programme
- Storm Overflow Programme
- Blue Green Corridor
- Storm Overflow Removal
- Drainage Communities

This is drainage community reference DC_11 which is within the Howdon area.
 The drainage community is classified as high priority based upon it containing a river water asset discharging to an environmentally sensitive area.
 The DWMP recommends that storage at the storm overflow(s) and storage in the catchment is created to manage and improve spill and flooding performance.
 The application of growth in the catchment has shown that no investment is required at the sewage treatment works.

£5,130,000

Cost

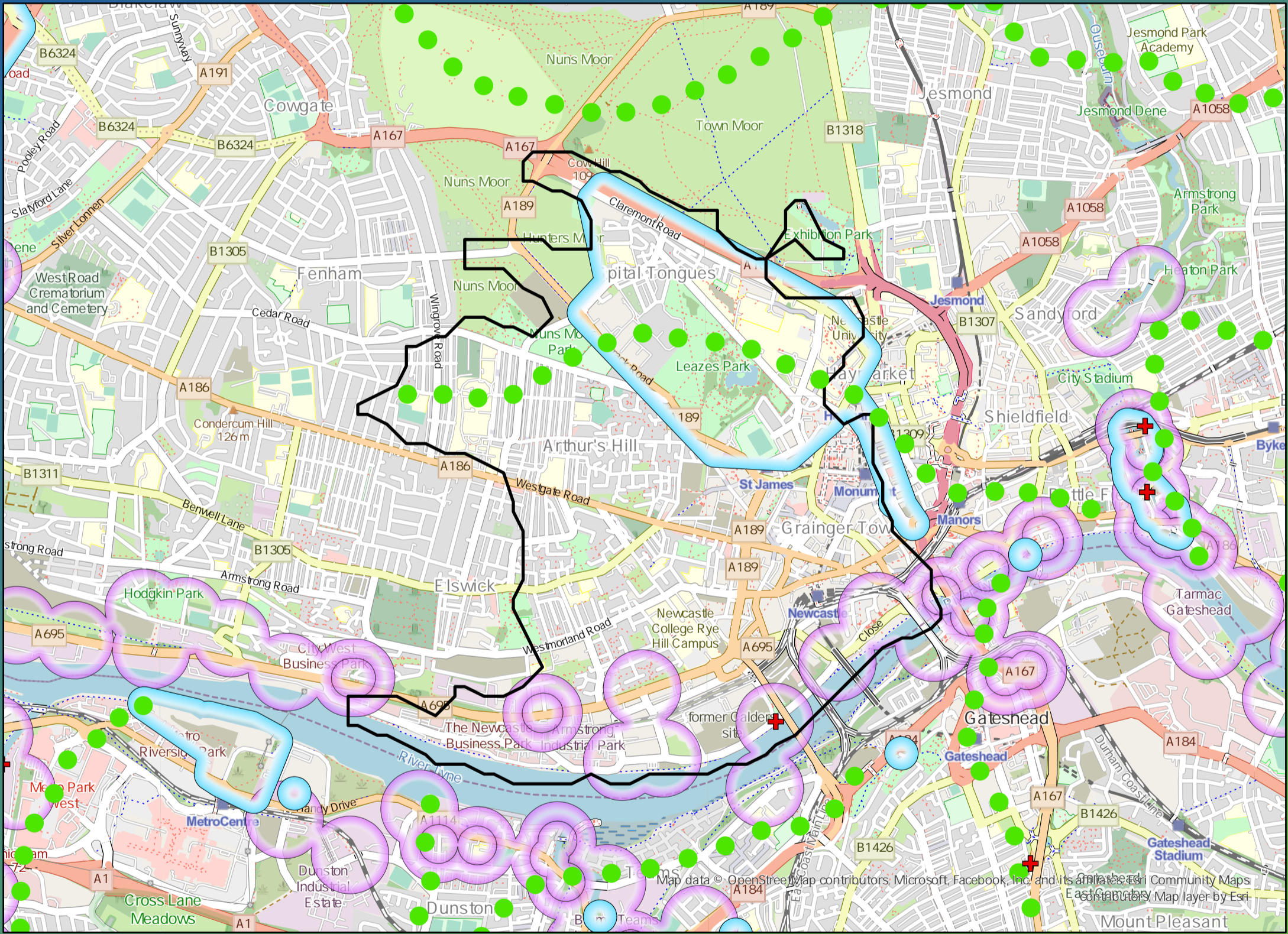
£16,530,000

Benefit

DWMP Drainage Community Summary Howdon



<p>Properties at Risk of Flooding Internally</p>	2020 214	<p>8</p> <p>Storm overflows spilling to Rivers</p>	<p>0</p> <p>Storm overflows spilling to Bathing Waters</p>	<p>0</p> <p>Manholes at Risk of Pollution</p>	<p>Number of spills to the Environment</p>
	2045 223	<p>No</p> <p>Site of Special Scientific Interest</p>	<p>No</p> <p>Strategic Area of Conservation</p>	<p>No</p> <p>Strategic Area for Ecology</p>	
	Post Investment 0				



Opportunities

- 3rd Party Stakeholder
- WINEP Programme
- Storm Overflow Programme
- Blue Green Corridor
- Storm Overflow Removal
- Drainage Communities

This is drainage community reference DC_12 which is within the Howdon area.

The drainage community is classified as low priority based upon it containing a river water asset discharging to an area without environmental concerns.

The DWMP recommends that surface water separation including SuDS features and a blue-green corridor is created to manage and improve spill and flooding performance.

The application of growth in the catchment has shown that no investment is required at the sewage treatment works.

£7,340,000

Cost

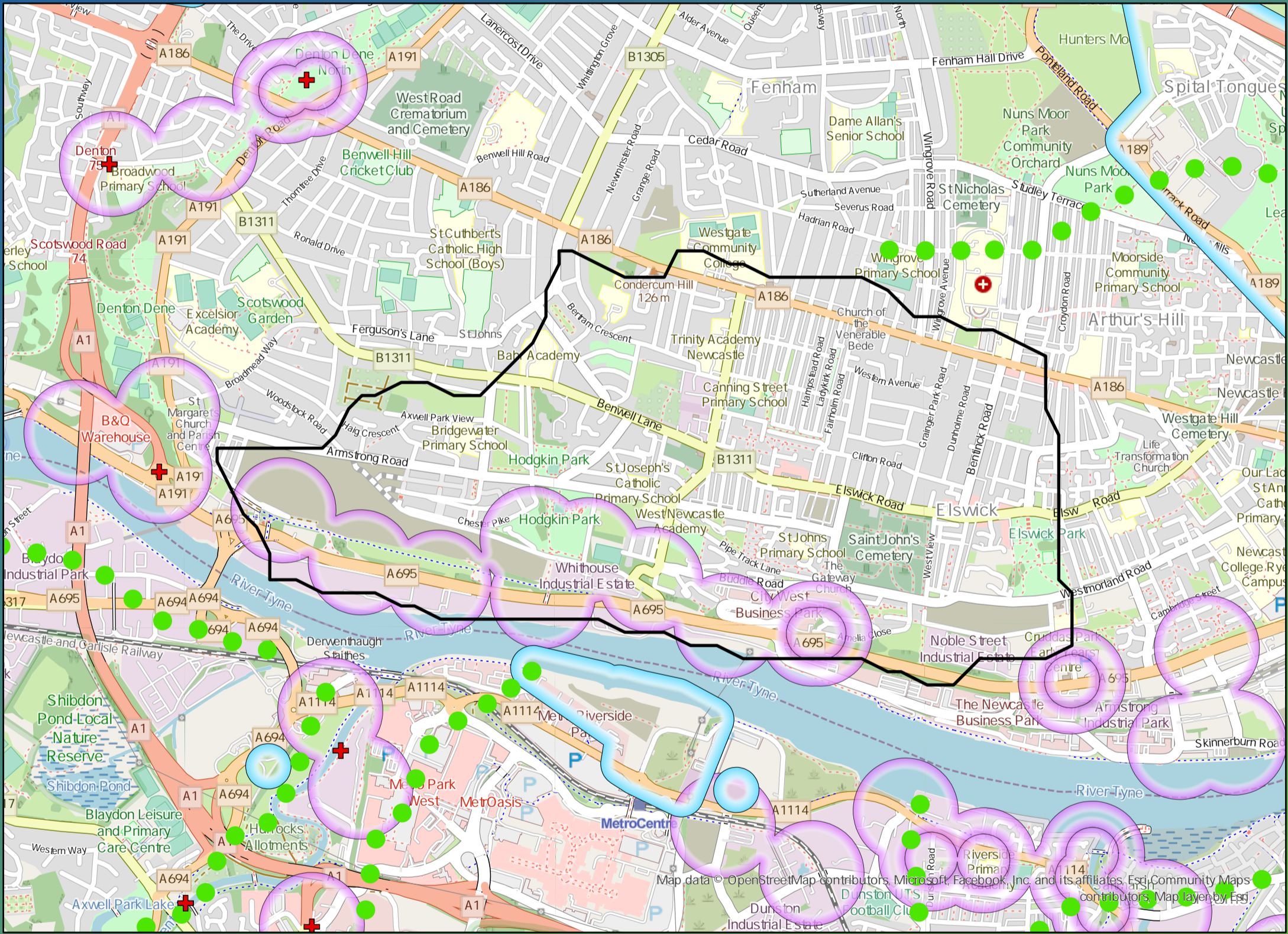
£48,300,000

Benefit

DWMP Drainage Community Summary Howdon



<p>Properties at Risk of Flooding Internally</p>	<p>2020</p> <p>330</p>	<p>5</p> <p>Storm overflows spilling to Rivers</p>	<p>0</p> <p>Storm overflows spilling to Bathing Waters</p>	<p>0</p> <p>Manholes at Risk of Pollution</p>	<p>Number of spills to the Environment</p>	<p>2020</p> <p>139</p>
	<p>2045</p> <p>371</p> <p>Post Investment</p> <p>0</p>	<p>No</p> <p>Site of Special Scientific Interest</p>	<p>No</p> <p>Strategic Area of Conservation</p>	<p>No</p> <p>Strategic Area for Ecology</p>		<p>2045</p> <p>139</p> <p>Post Investment</p> <p>50</p>



Opportunities

- 3rd Party Stakeholder
- WINEP Programme
- Storm Overflow Programme
- Blue Green Corridor
- Storm Overflow Removal
- Drainage Communities

This is drainage community reference DC_13 which is within the Howdon area.

The drainage community is classified as low priority based upon it containing a river water asset discharging to an area without environmental concerns.

The DWMP recommends that storage at the storm overflow(s) and storage in the catchment is created to manage and improve spill and flooding performance.

The application of growth in the catchment has shown that no investment is required at the sewage treatment works.

£5,290,000

Cost

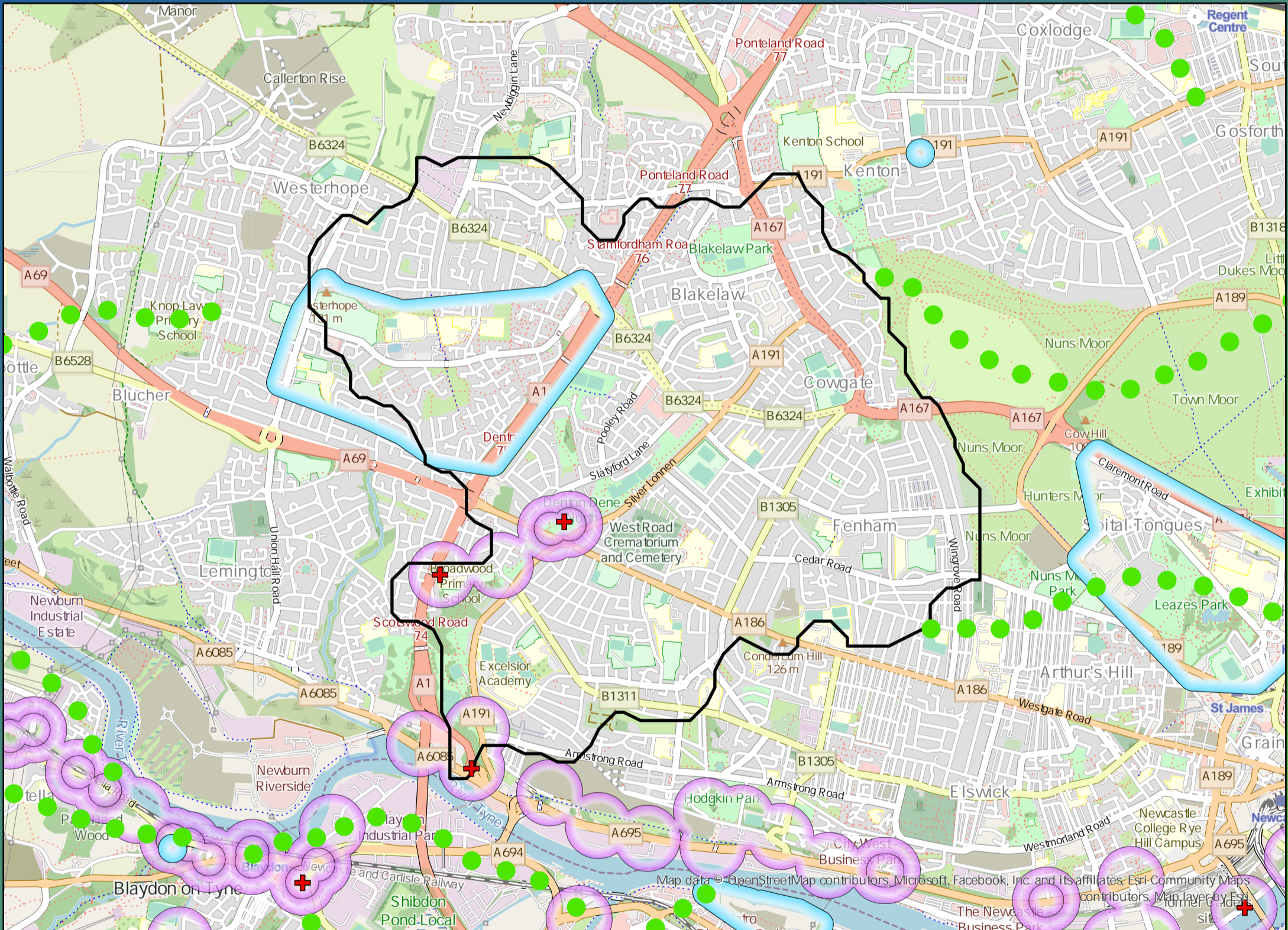
£31,420,000

Benefit

DWMP Drainage Community Summary Howdon



<p>Properties at Risk of Flooding Internally</p>	2020 822	<p>6</p> <p>Storm overflows spilling to Rivers</p>	<p>0</p> <p>Storm overflows spilling to Bathing Waters</p>	<p>6</p> <p>Manholes at Risk of Pollution</p>	<p>Number of spills to the Environment</p>
	2045 105	<p>No</p> <p>Site of Special Scientific Interest</p>	<p>No</p> <p>Strategic Area of Conservation</p>	<p>No</p> <p>Strategic Area for Ecology</p>	
	Post Investment 0				2045 227
					Post Investment 60



Opportunities

- 3rd Party Stakeholder
- WINEP Programme
- Storm Overflow Programme
- Blue Green Corridor
- Storm Overflow Removal
- Drainage Communities

This is drainage community reference DC_14 which is within the Howdon area.

The drainage community is classified as low priority based upon it containing a river water asset discharging to an area without environmental concerns.

The DWMP recommends that storage at the storm overflow(s) and storage in the catchment is created to manage and improve spill and flooding performance.

The application of growth in the catchment has shown that no investment is required at the sewage treatment works.



£14,540,000

Cost



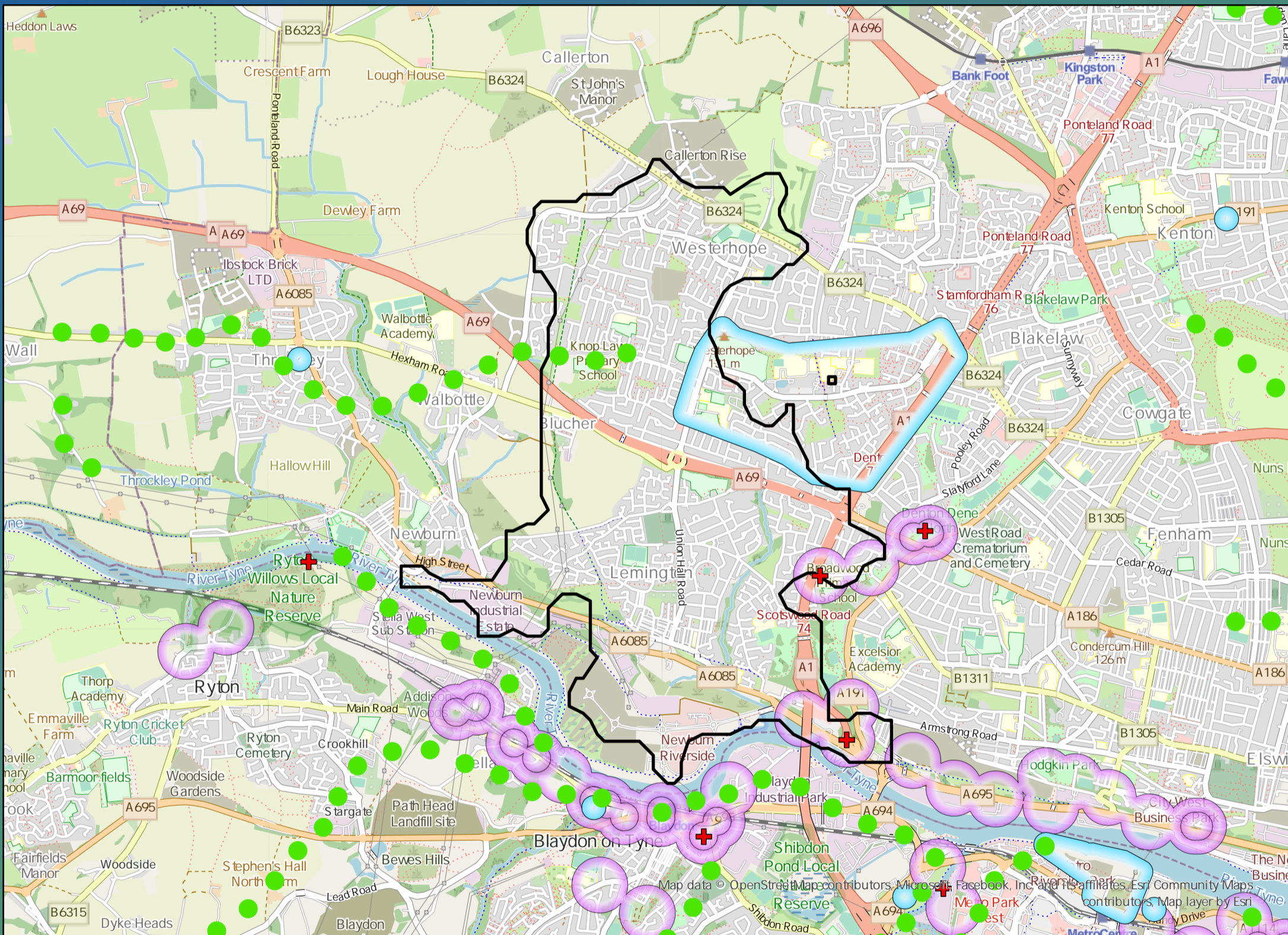
£68,150,000

Benefit

DWMP Drainage Community Summary Howdon



<p>Properties at Risk of Flooding Internally</p>	2020 416	<p>7</p> <p>Storm overflows spilling to Rivers</p>	<p>0</p> <p>Storm overflows spilling to Bathing Waters</p>	<p>5</p> <p>Manholes at Risk of Pollution</p>	<p>Number of spills to the Environment</p>
	2045 509	<p>No</p> <p>Site of Special Scientific Interest</p>	<p>No</p> <p>Strategic Area of Conservation</p>	<p>No</p> <p>Strategic Area for Ecology</p>	
	Post Investment 0				2045 164
					Post Investment 70



Opportunities

- 3rd Party Stakeholder
- WINEP Programme
- Storm Overflow Programme
- Blue Green Corridor
- Storm Overflow Removal
- Drainage Communities

This is drainage community reference DC_15 which is within the Howdon area.

The drainage community is classified as low priority based upon it containing a river water asset discharging to an area without environmental concerns.

The DWMP recommends that storage at the storm overflow(s) and storage in the catchment is created to manage and improve spill and flooding performance.

The application of growth in the catchment has shown that no investment is required at the sewage treatment works.

£8,020,000

Cost

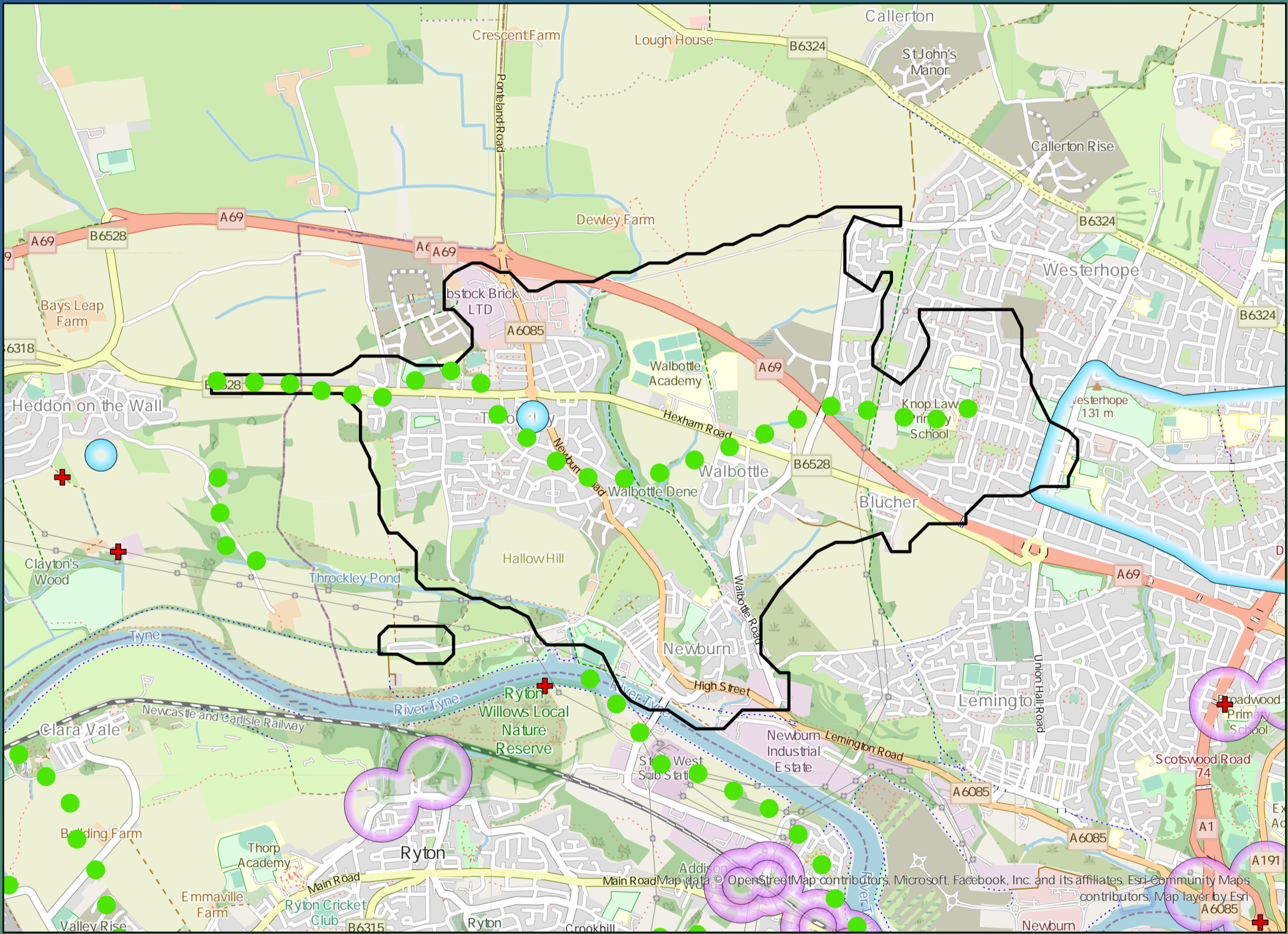
£39,720,000

Benefit

DWMP Drainage Community Summary Howdon



<p>Properties at Risk of Flooding Internally</p>	2020 327	<p>3</p> <p>Storm overflows spilling to Rivers</p>	<p>0</p> <p>Storm overflows spilling to Bathing Waters</p>	<p>22</p> <p>Manholes at Risk of Pollution</p>	<p>Number of spills to the Environment</p>
	2045 359	<p>Yes</p> <p>Site of Special Scientific Interest</p>	<p>No</p> <p>Strategic Area of Conservation</p>	<p>No</p> <p>Strategic Area for Ecology</p>	
	Post Investment 0				



Opportunities

- 3rd Party Stakeholder
- WINEP Programme
- Storm Overflow Programme
- Blue Green Corridor
- Storm Overflow Removal
- Drainage Communities

This is drainage community reference DC_16 which is within the Howdon area.

The drainage community is classified as high priority based upon it containing a RNAG asset discharging to an environmentally sensitive area.

The DWMP recommends that storage at the storm overflow(s) and storage in the catchment is created to manage and improve spill and flooding performance.

The application of growth in the catchment has shown that no investment is required at the sewage treatment works.

£11,850,000

Cost

£20,880,000

Benefit