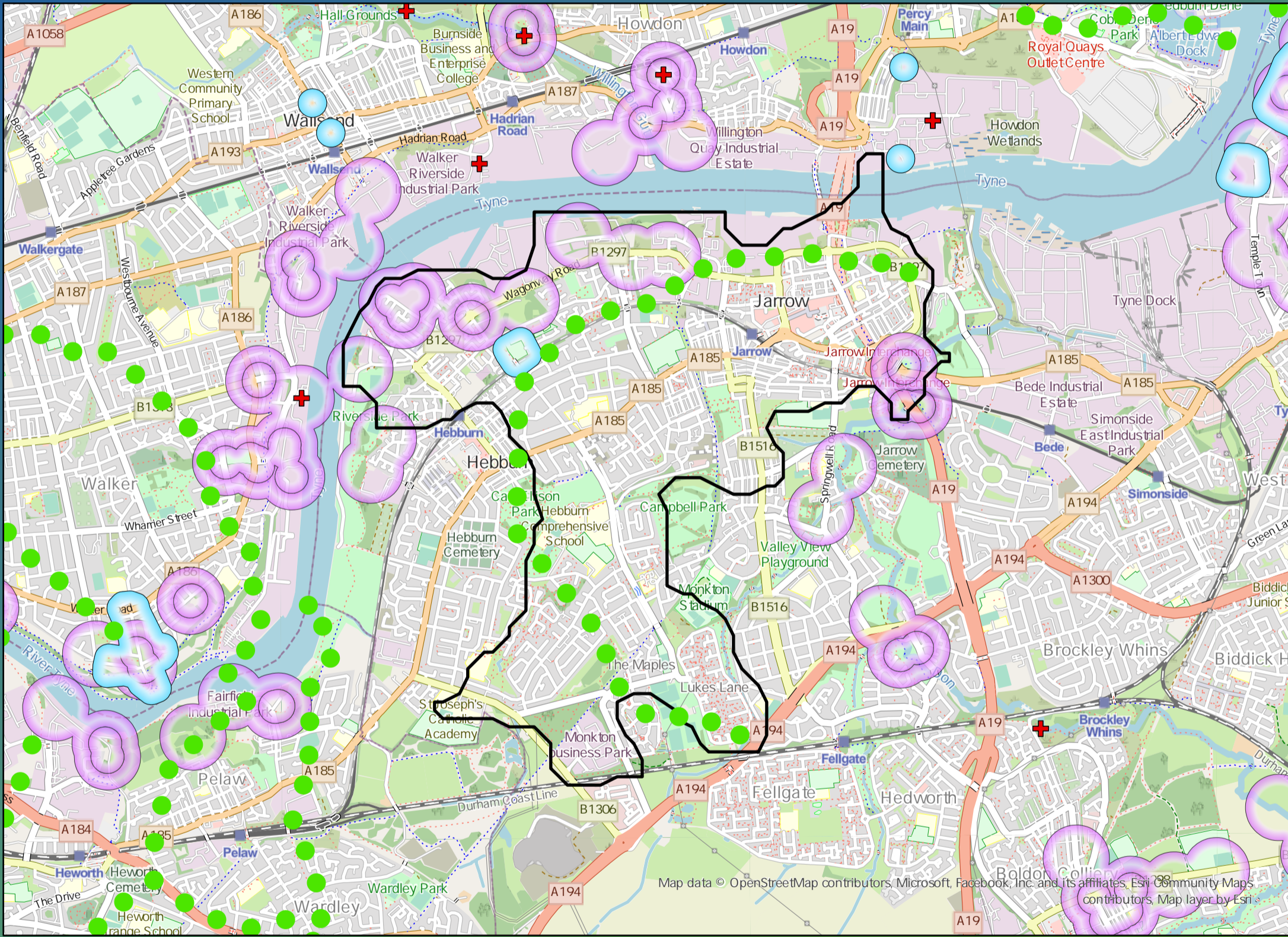


DWMP Drainage Community Summary Howdon



<p>Properties at Risk of Flooding Internally</p>	2020 448	<p>3</p> <p>Storm overflows spilling to Rivers</p>	<p>0</p> <p>Storm overflows spilling to Bathing Waters</p>	<p>0</p> <p>Manholes at Risk of Pollution</p>	<p>Number of spills to the Environment</p>
	2045 566	<p>No</p> <p>Site of Special Scientific Interest</p>	<p>No</p> <p>Strategic Area of Conservation</p>	<p>No</p> <p>Strategic Area for Ecology</p>	
Post Investment 0	<p>0</p> <p>2020</p>	<p>0</p> <p>2045</p>	<p>0</p> <p>Post Investment</p>	<p>0</p>	<p>0</p>



Opportunities

- 3rd Party Stakeholder
- WINEP Programme
- Storm Overflow Programme
- Blue Green Corridor
- Storm Overflow Removal
- Drainage Communities

This is drainage community reference DC_01 which is within the Howdon area.
 The drainage community is classified as medium priority based upon it containing a RNAG asset discharging to an area without environmental concerns.
 The DWMP recommends that storage at the storm overflow(s) and storage in the catchment is created to manage and improve spill and flooding performance.
 The application of growth in the catchment has shown that no investment is required at the sewage treatment works.

£33,310,000

Cost

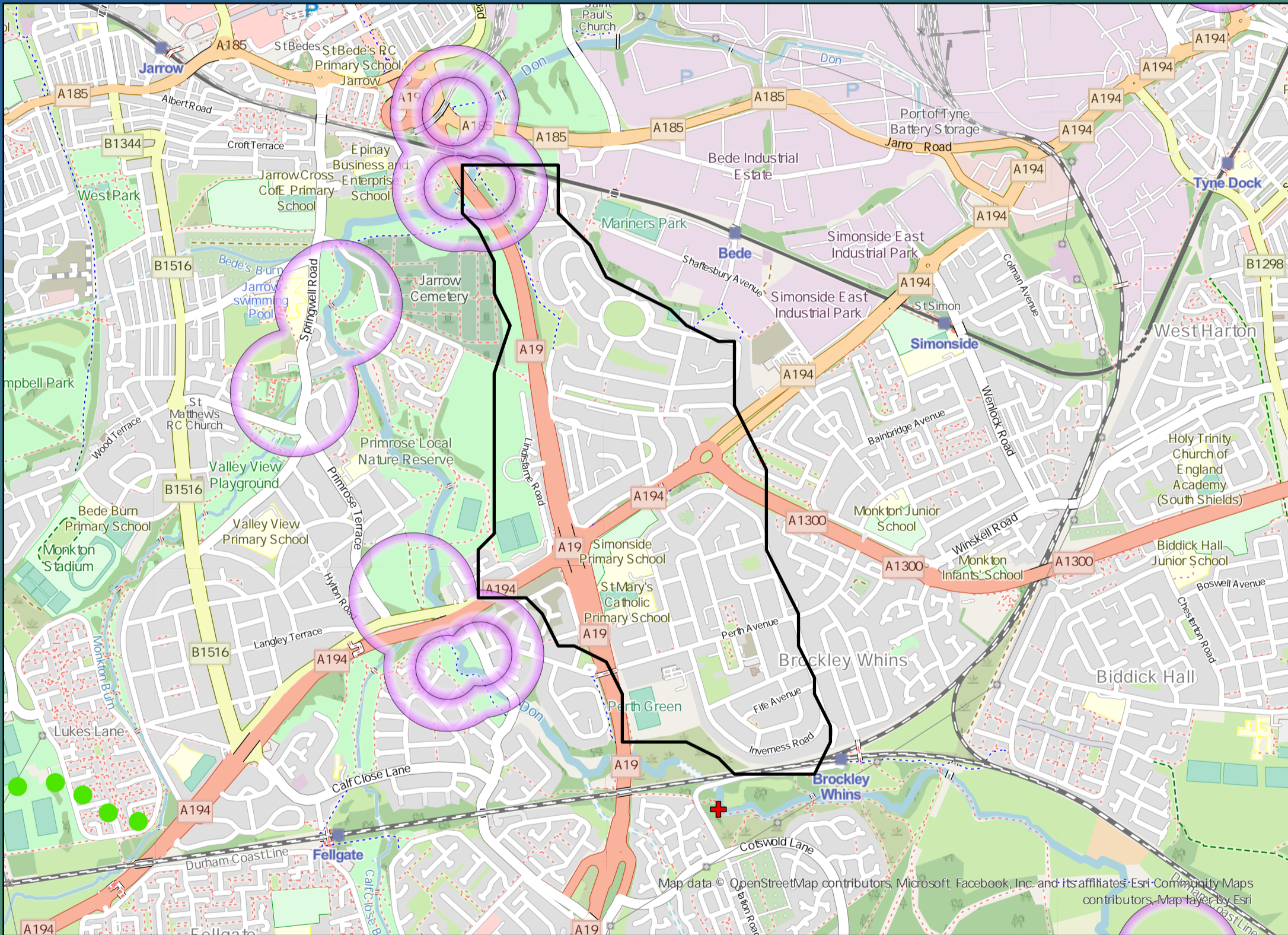
£41,300,000

Benefit

DWMP Drainage Community Summary Howdon



<p>Properties at Risk of Flooding Internally</p>	2020 122	<p>1</p> <p>Storm overflows spilling to Rivers</p>	<p>0</p> <p>Storm overflows spilling to Bathing Waters</p>	<p>0</p> <p>Manholes at Risk of Pollution</p>	<p>Number of spills to the Environment</p>
	2045 162	<p>No</p> <p>Site of Special Scientific Interest</p>	<p>No</p> <p>Strategic Area of Conservation</p>	<p>No</p> <p>Strategic Area for Ecology</p>	
Post Investment 0					2020 41
					2045 41
					Post Investment 10



Opportunities

- 3rd Party Stakeholder
- WINEP Programme
- Storm Overflow Programme
- Blue Green Corridor
- Storm Overflow Removal
- Drainage Communities

This is drainage community reference DC_O2 which is within the Howdon area.

The drainage community is classified as low priority based upon it containing a river water asset discharging to an area without environmental concerns.

The DWMP recommends that storage at the storm overflow(s) and storage in the catchment is created to manage and improve spill and flooding performance.

The application of growth in the catchment has shown that no investment is required at the sewage treatment works.



£3,430,000

Cost



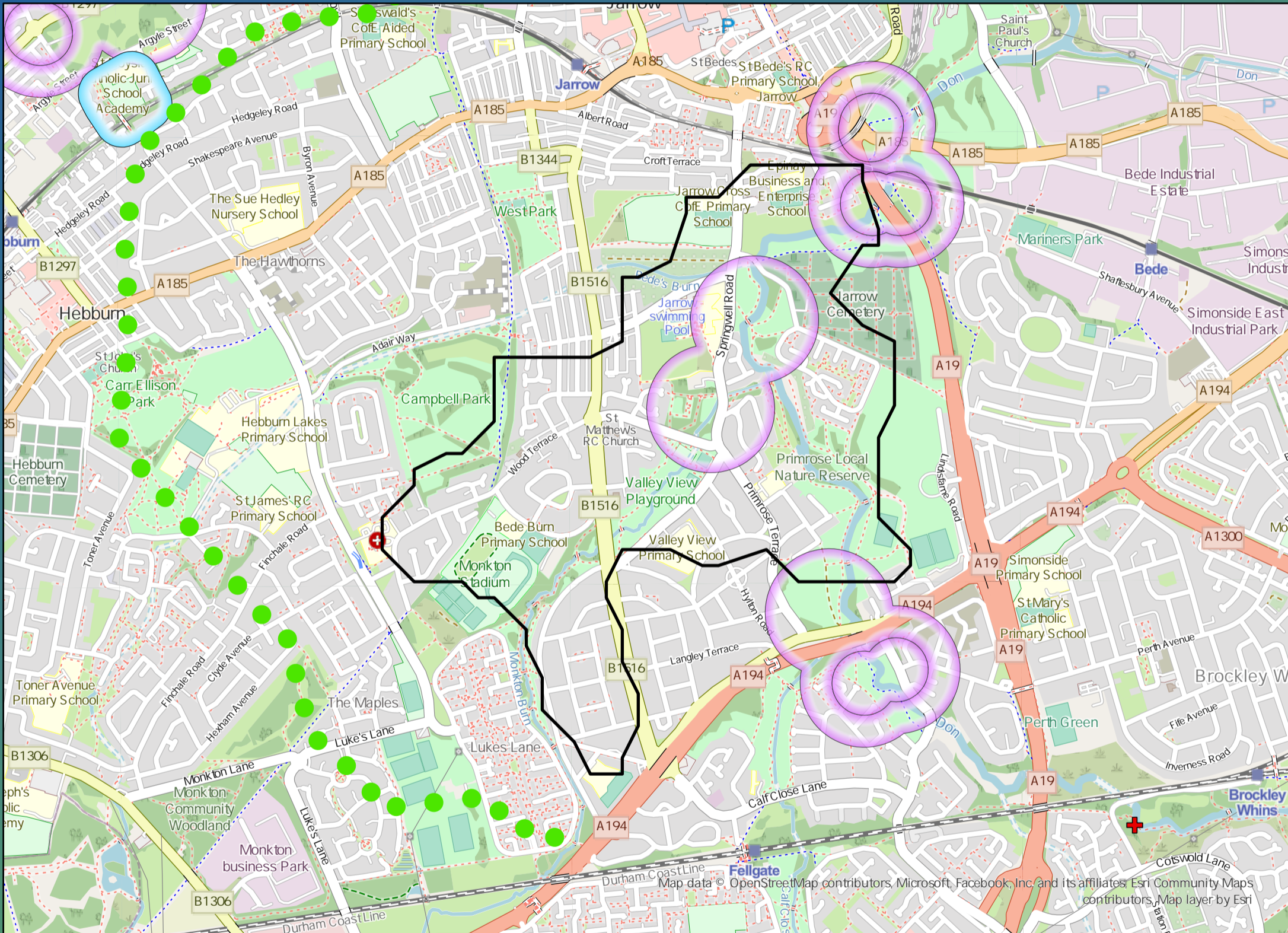
£11,210,000

Benefit

DWMP Drainage Community Summary Howdon



<p>Properties at Risk of Flooding Internally</p>	2020 79	<p>2</p> <p>Storm overflows spilling to Rivers</p>	<p>0</p> <p>Storm overflows spilling to Bathing Waters</p>	<p>21</p> <p>Manholes at Risk of Pollution</p>	<p>Number of spills to the Environment</p>
	2045 99	<p>No</p> <p>Site of Special Scientific Interest</p>	<p>No</p> <p>Strategic Area of Conservation</p>	<p>No</p> <p>Strategic Area for Ecology</p>	
	Post Investment 0				2020 16
					2045 16
					Post Investment 20



Opportunities

- 3rd Party Stakeholder
- WINEP Programme
- Storm Overflow Programme
- Blue Green Corridor
- Storm Overflow Removal
- Drainage Communities

This is drainage community reference DC_03 which is within the Howdon area.

The drainage community is classified as low priority based upon it containing a river water asset discharging to an area without environmental concerns.

The DWMP recommends that storage at the storm overflow(s) and storage in the catchment is created to manage and improve spill and flooding performance.

The application of growth in the catchment has shown that no investment is required at the sewage treatment works.



Cost

£2,520,000



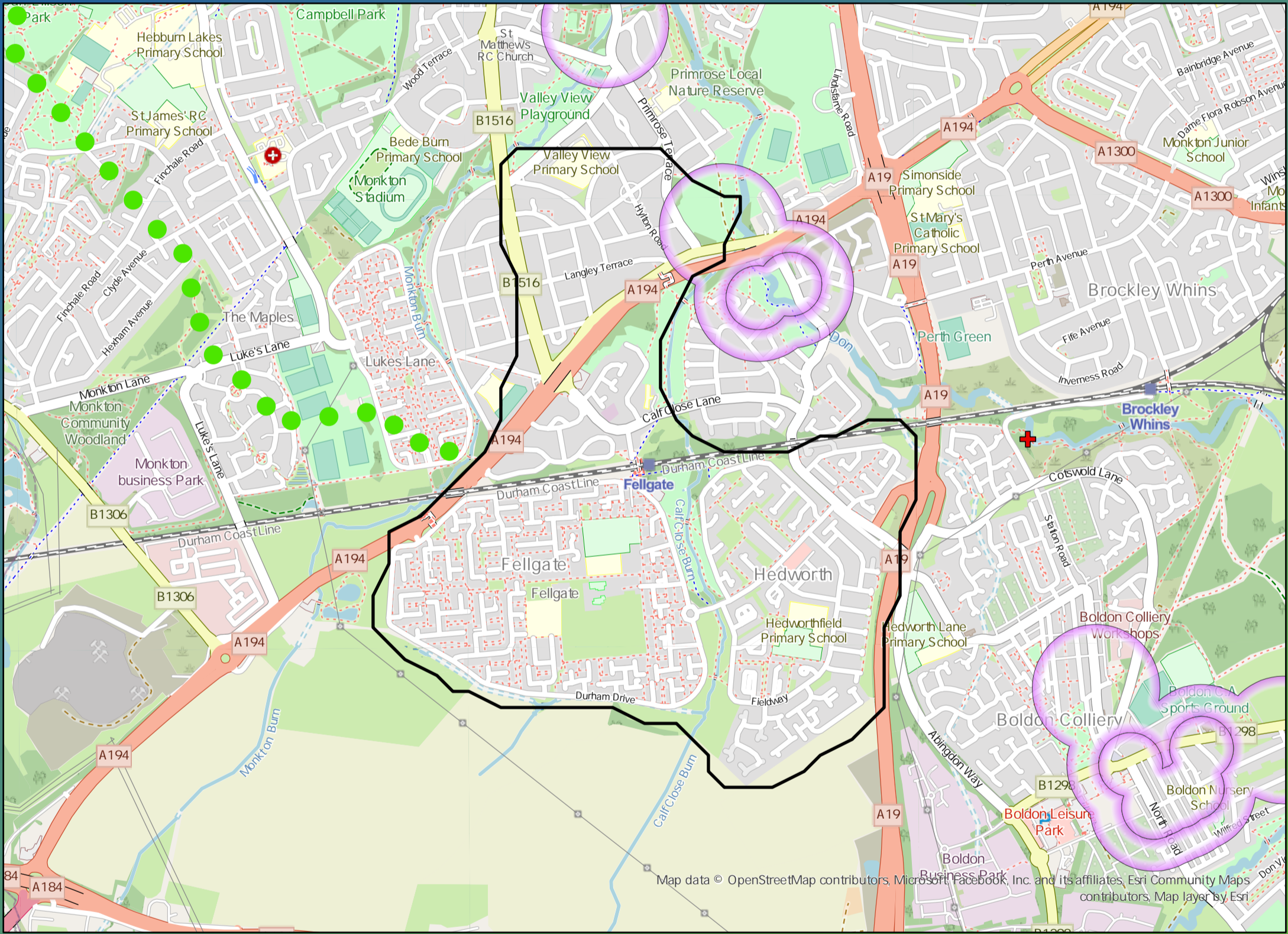
Benefit

£5,780,000

DWMP Drainage Community Summary Howdon



<p>Properties at Risk of Flooding Internally</p>	2020 53	<p>1</p> <p>Storm overflows spilling to Rivers</p>	<p>0</p> <p>Storm overflows spilling to Bathing Waters</p>	<p>12</p> <p>Manholes at Risk of Pollution</p>	<p>Number of spills to the Environment</p>
	2045 94	<p>No</p> <p>Site of Special Scientific Interest</p>	<p>No</p> <p>Strategic Area of Conservation</p>	<p>No</p> <p>Strategic Area for Ecology</p>	



This is drainage community reference DC_04 which is within the Howdon area.

The drainage community is classified as low priority based upon it containing a river water asset discharging to an area without environmental concerns.

The DWMP recommends that storage at the storm overflow(s) and storage in the catchment is created to manage and improve spill and flooding performance.

The application of growth in the catchment has shown that no investment is required at the sewage treatment works.

- Opportunities**
- 3rd Party Stakeholder
 - WINEP Programme
 - Storm Overflow Programme
 - Blue Green Corridor
 - Storm Overflow Removal
 - Drainage Communities

£1,080,000

Cost

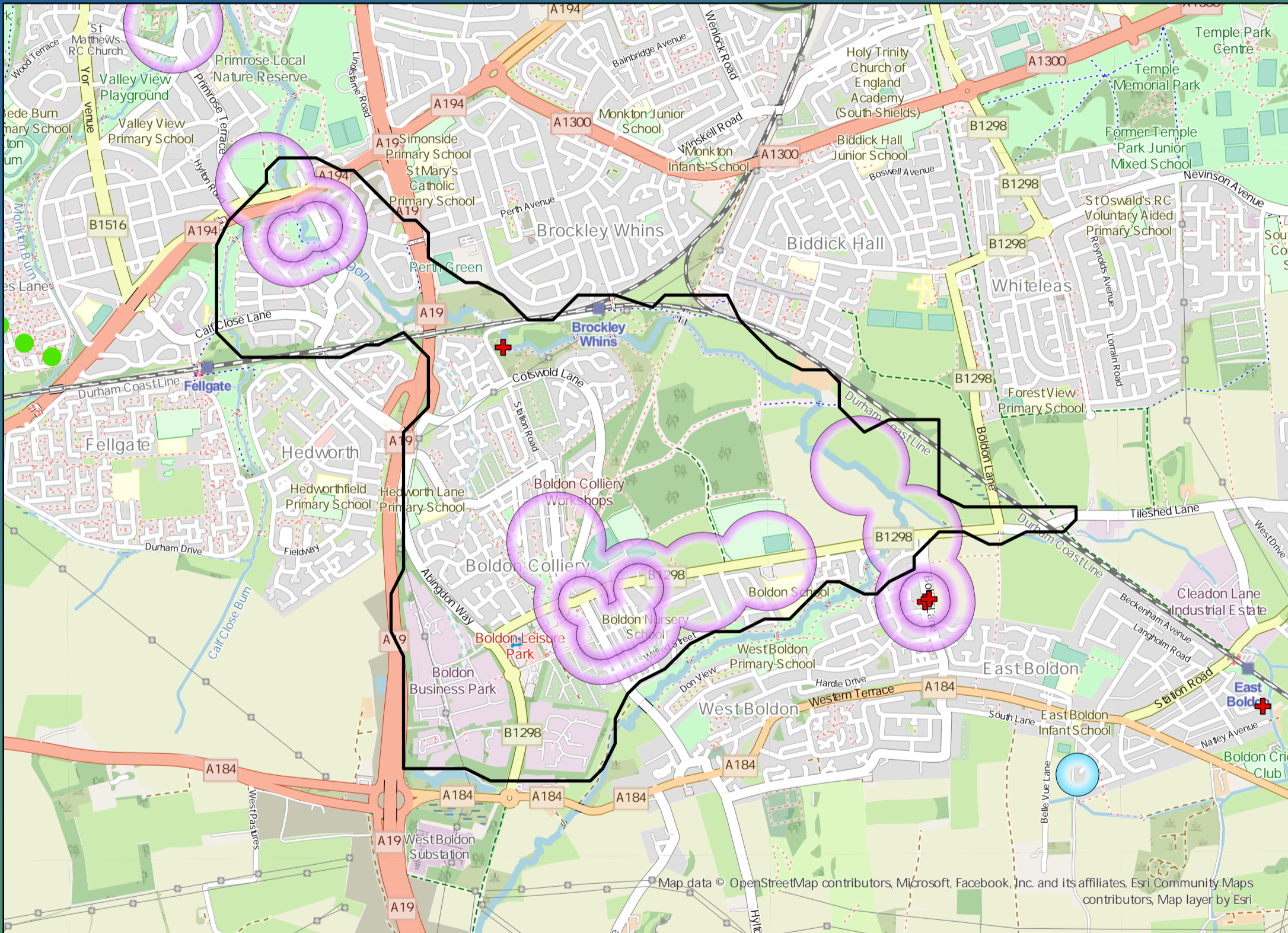
£45,960,000

Benefit

DWMP Drainage Community Summary Howdon



<p>Properties at Risk of Flooding Internally</p>	2020 194	<p>Storm overflows spilling to Rivers</p>	9	<p>Storm overflows spilling to Bathing Waters</p>	0	<p>Manholes at Risk of Pollution</p>	19	<p>Number of spills to the Environment</p>	2020 442
	2045 271	<p>Site of Special Scientific Interest</p>	No	<p>Strategic Area of Conservation</p>	No	<p>Strategic Area for Ecology</p>	No		2045 442
	Post Investment 0								Post Investment 90



Opportunities

- 3rd Party Stakeholder
- WINEP Programme
- Storm Overflow Programme
- Blue Green Corridor
- Storm Overflow Removal
- Drainage Communities

This is drainage community reference DC_05 which is within the Howdon area.

The drainage community is classified as low priority based upon it containing a river water asset discharging to an area without environmental concerns.

The DWMP recommends that surface water separation including SuDS features and a blue-green corridor is created to manage and improve spill and flooding performance.

The application of growth in the catchment has shown that no investment is required at the sewage treatment works.

£2,040,000

Cost

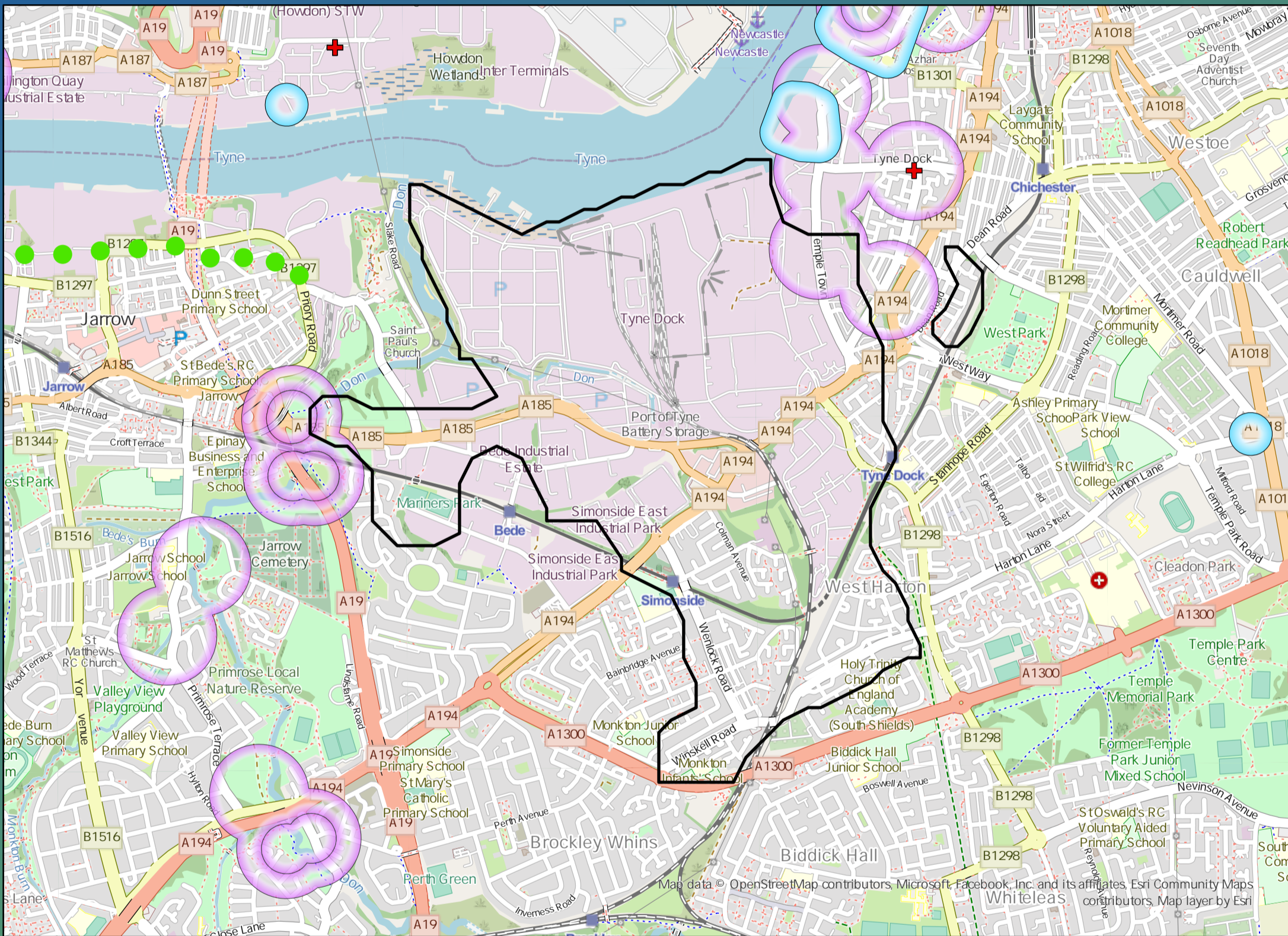
£64,260,000

Benefit

DWMP Drainage Community Summary Howdon



<p>Properties at Risk of Flooding Internally</p>	2020 77	<p>Storm overflows spilling to Rivers</p>	<p>Storm overflows spilling to Bathing Waters</p>	<p>Manholes at Risk of Pollution</p>	<p>Number of spills to the Environment</p>
	2045 0	<p>Storm overflows spilling to Rivers</p>	<p>Storm overflows spilling to Bathing Waters</p>	<p>Manholes at Risk of Pollution</p>	
<p>Post Investment</p>	0	<p>Site of Special Scientific Interest</p>	<p>Strategic Area of Conservation</p>	<p>Strategic Area for Ecology</p>	<p>Post Investment</p>
	0	No	No	No	0



Opportunities

- 3rd Party Stakeholder
- WINEP Programme
- Storm Overflow Programme
- Blue Green Corridor
- Storm Overflow Removal
- Drainage Communities

This is drainage community reference DC_06 which is within the Howdon area. The drainage community is classified as low priority based upon it containing a river water asset discharging to an area without environmental concerns. The DWMP recommends that storage at the storm overflow(s) and storage in the catchment is created to manage and improve spill and flooding performance. The application of growth in the catchment has shown that no investment is required at the sewage treatment works.

£2,010,000

Cost

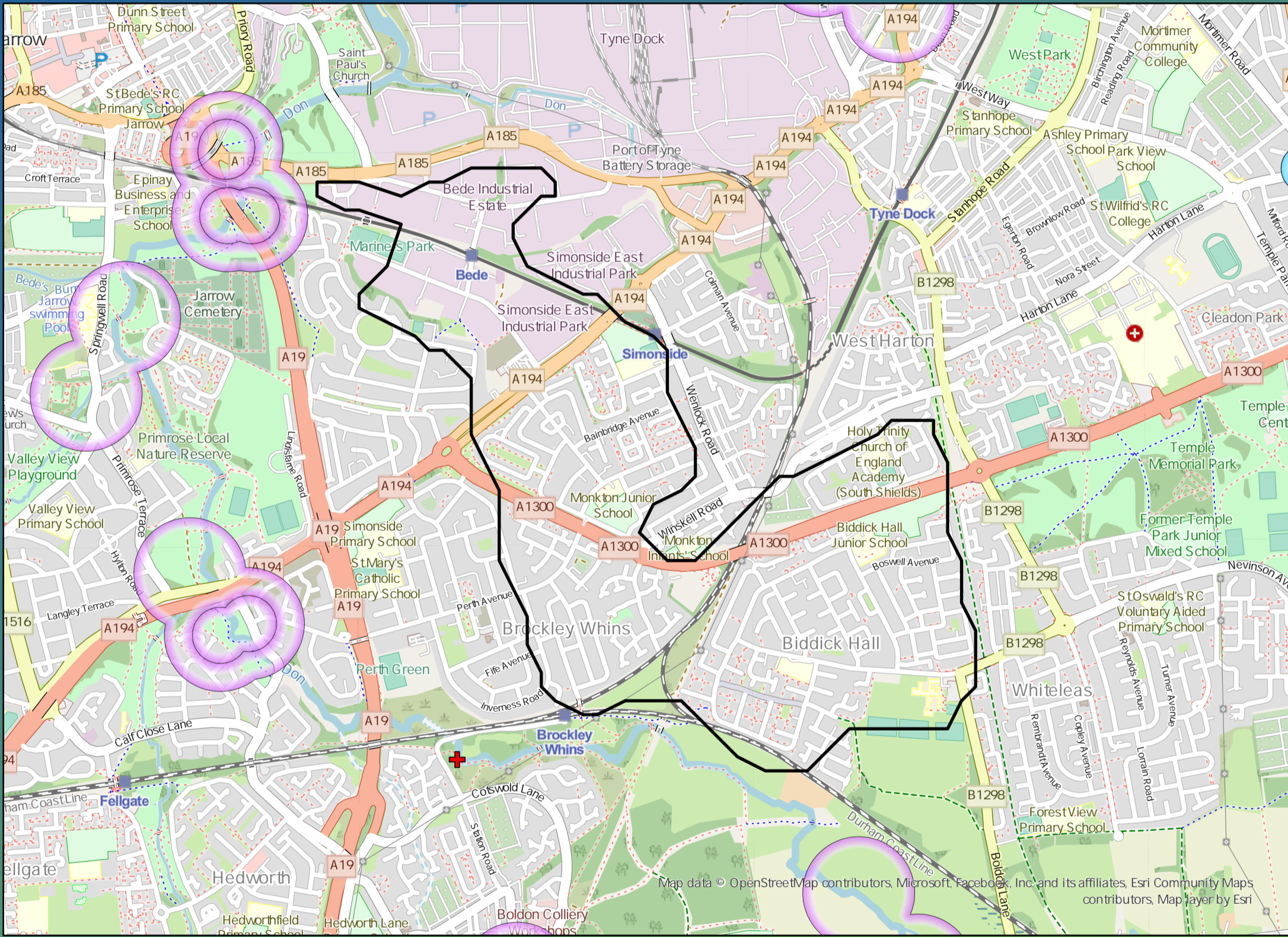
£1,790,000

Benefit

DWMP Drainage Community Summary Howdon



<p>Properties at Risk of Flooding Internally</p>	2020 51	<p>Storm overflows spilling to Rivers</p>	1	<p>Storm overflows spilling to Bathing Waters</p>	0	<p>Manholes at Risk of Pollution</p>	0	<p>Number of spills to the Environment</p>	2020 57
	2045 89	<p>Site of Special Scientific Interest</p>	No	<p>Strategic Area of Conservation</p>	No	<p>Strategic Area for Ecology</p>	No		2045 57
	Post Investment 0							Post Investment 10	



Opportunities

- 3rd Party Stakeholder
- WINEP Programme
- Storm Overflow Programme
- Blue Green Corridor
- Storm Overflow Removal
- Drainage Communities

This is drainage community reference DC_07 which is within the Howdon area.
 The drainage community is classified as low priority based upon it containing a river water asset discharging to an area without environmental concerns.
 The DWMP recommends that storage at the storm overflow(s) and storage in the catchment is created to manage and improve spill and flooding performance.
 The application of growth in the catchment has shown that no investment is required at the sewage treatment works.

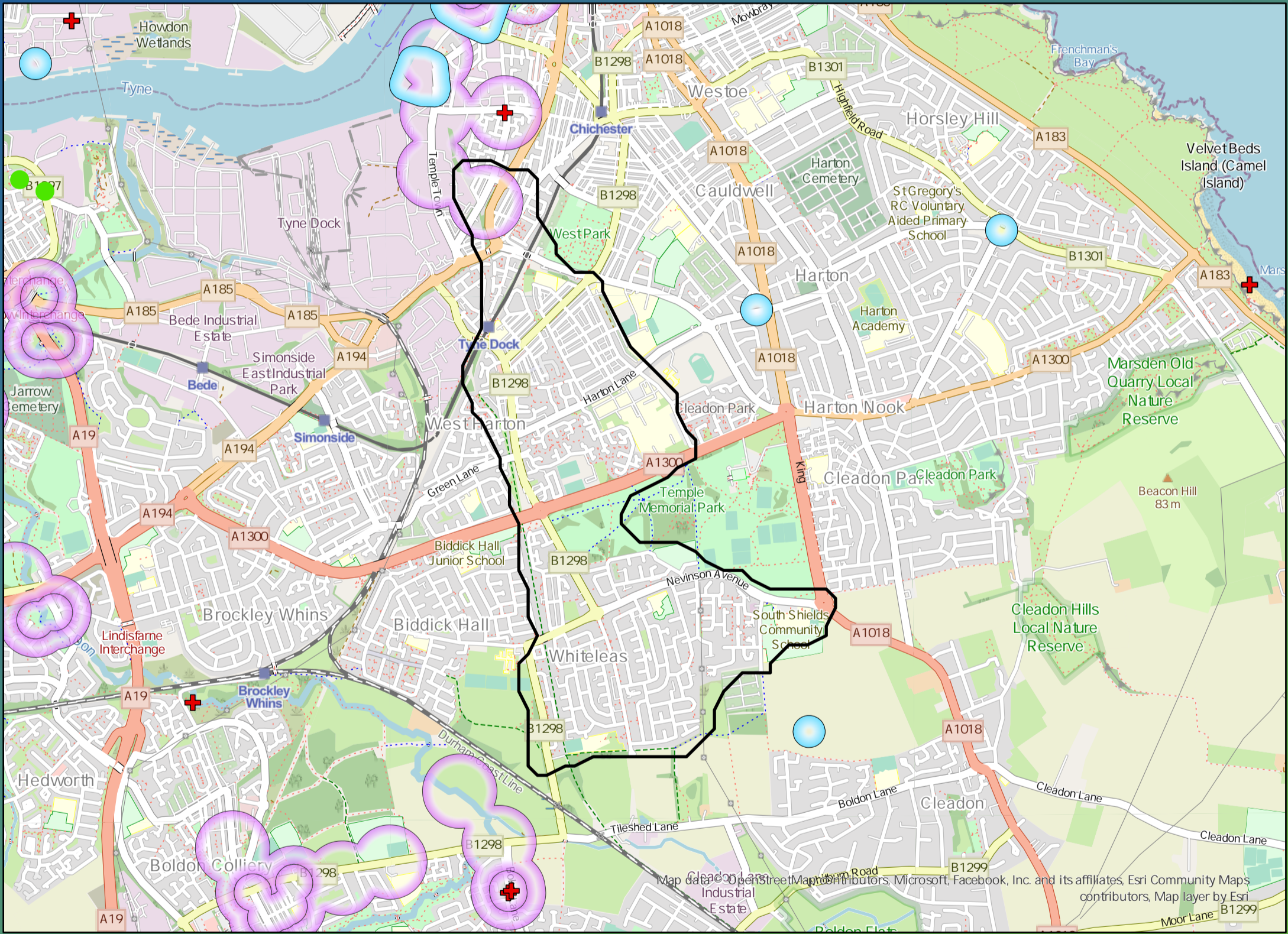
£4,110,000
Cost

£10,280,000
Benefit

DWMP Drainage Community Summary Howdon



<p>Properties at Risk of Flooding Internally</p>	2020 371	<p>2</p> <p>Storm overflows spilling to Rivers</p>	<p>0</p> <p>Storm overflows spilling to Bathing Waters</p>	<p>0</p> <p>Manholes at Risk of Pollution</p>	<p>Number of spills to the Environment</p>
	2045 579	<p>No</p> <p>Site of Special Scientific Interest</p>	<p>No</p> <p>Strategic Area of Conservation</p>	<p>No</p> <p>Strategic Area for Ecology</p>	
	Post Investment 0				2020 158
					2045 158
					Post Investment 20



Opportunities

- 3rd Party Stakeholder
- WINEP Programme
- Storm Overflow Programme
- Blue Green Corridor
- Storm Overflow Removal
- Drainage Communities

This is drainage community reference DC_08 which is within the Howdon area. The drainage community is classified as low priority based upon it containing a river water asset discharging to an area without environmental concerns. The DWMP recommends that storage at the storm overflow(s) and storage in the catchment is created to manage and improve spill and flooding performance. The application of growth in the catchment has shown that no investment is required at the sewage treatment works.

£86,420,000

Cost

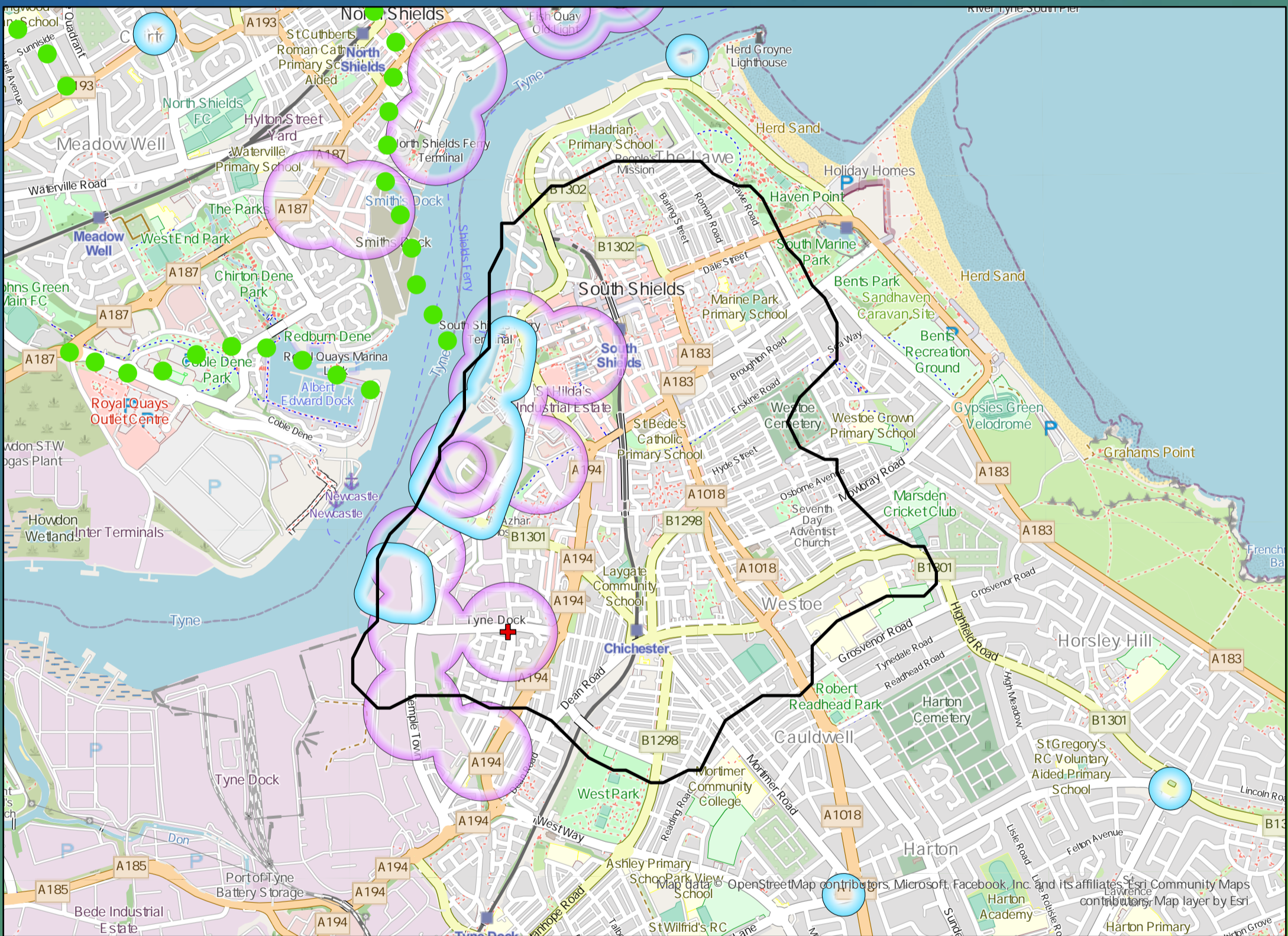
£41,160,000

Benefit

DWMP Drainage Community Summary Howdon



<p>Properties at Risk of Flooding Internally</p>	2020 703	<p>Storm overflows spilling to Rivers</p>	<p>Storm overflows spilling to Bathing Waters</p>	<p>Manholes at Risk of Pollution</p>	<p>Number of spills to the Environment</p>
	2045 961	<p>Site of Special Scientific Interest</p>	<p>Strategic Area of Conservation</p>	<p>Strategic Area for Ecology</p>	
Post Investment 0	6	0	0	0	2020 207
	0	No	No	No	2045 207
					Post Investment 60



Opportunities

- 3rd Party Stakeholder
- WINEP Programme
- Storm Overflow Programme
- Blue Green Corridor
- Storm Overflow Removal
- Drainage Communities

This is drainage community reference DC_09 which is within the Howdon area.

The drainage community is classified as low priority based upon it containing a river water asset discharging to an area without environmental concerns.

The DWMP recommends that storage at the storm overflow(s) and storage in the catchment is created to manage and improve spill and flooding performance.

The application of growth in the catchment has shown that no investment is required at the sewage treatment works.

£10,930,000

Cost

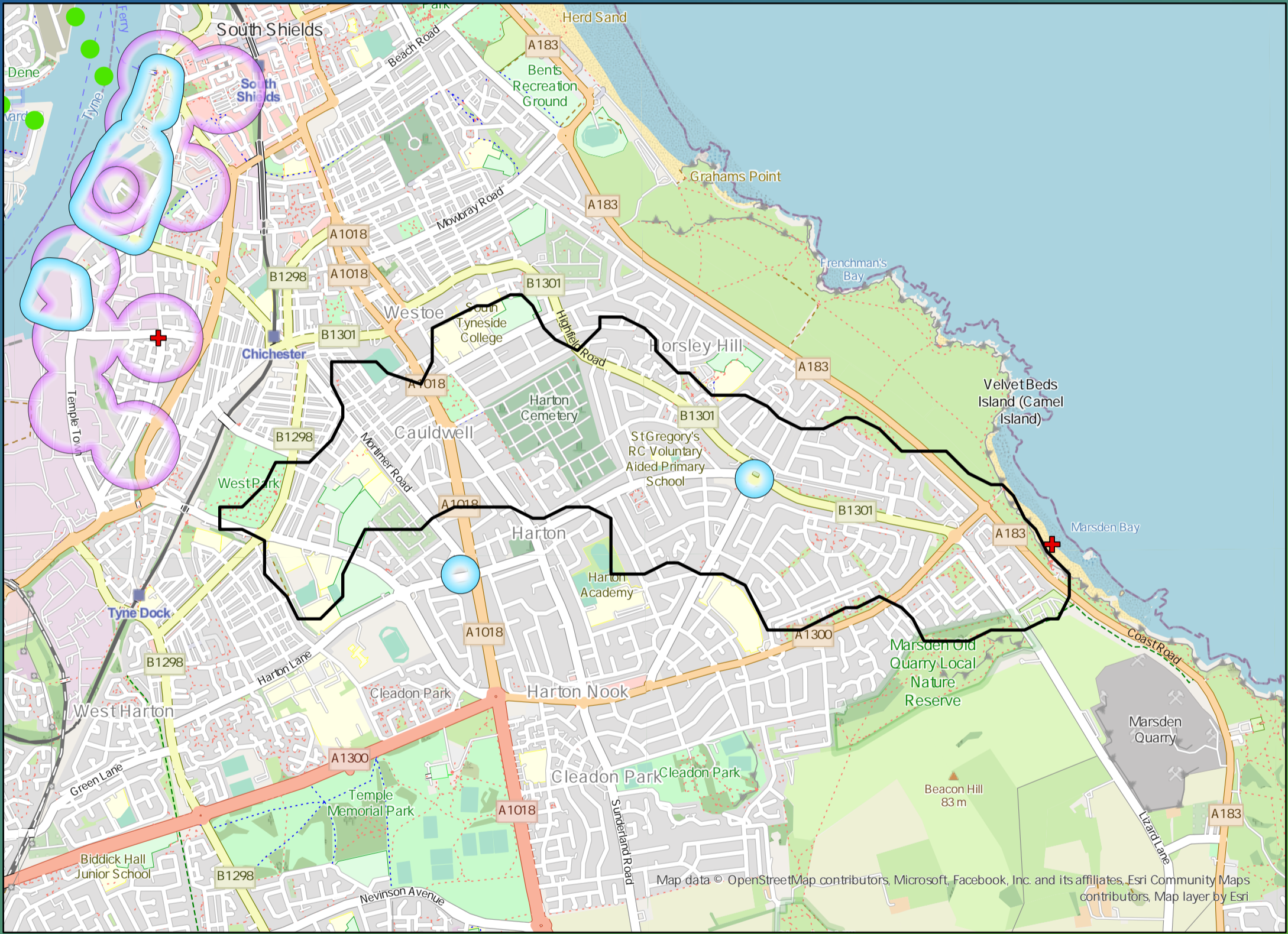
£61,940,000

Benefit

DWMP Drainage Community Summary Howdon



<p>Properties at Risk of Flooding Internally</p>	2020 526	<p>0</p> <p>Storm overflows spilling to Rivers</p>	<p>1</p> <p>Storm overflows spilling to Bathing Waters</p>	<p>0</p> <p>Manholes at Risk of Pollution</p>	<p>Number of spills to the Environment</p>
	2045 681	<p>Yes</p> <p>Site of Special Scientific Interest</p>	<p>Yes</p> <p>Strategic Area of Conservation</p>	<p>No</p> <p>Strategic Area for Ecology</p>	
	Post Investment 0				



Opportunities

- 3rd Party Stakeholder
- WINEP Programme
- Storm Overflow Programme
- Blue Green Corridor
- Storm Overflow Removal
- Drainage Communities

This is drainage community reference DC_10 which is within the Howdon area.

The drainage community is classified as high priority based upon it containing a river water asset discharging to an environmentally sensitive area.

The DWMP recommends that no investment is required due to the performance of the storm overflow and level of internal property flood risk in the catchment. The catchment will be monitored for future change.

The application of growth in the catchment has shown that no investment is required at the sewage treatment works.

£3,840,000

Cost

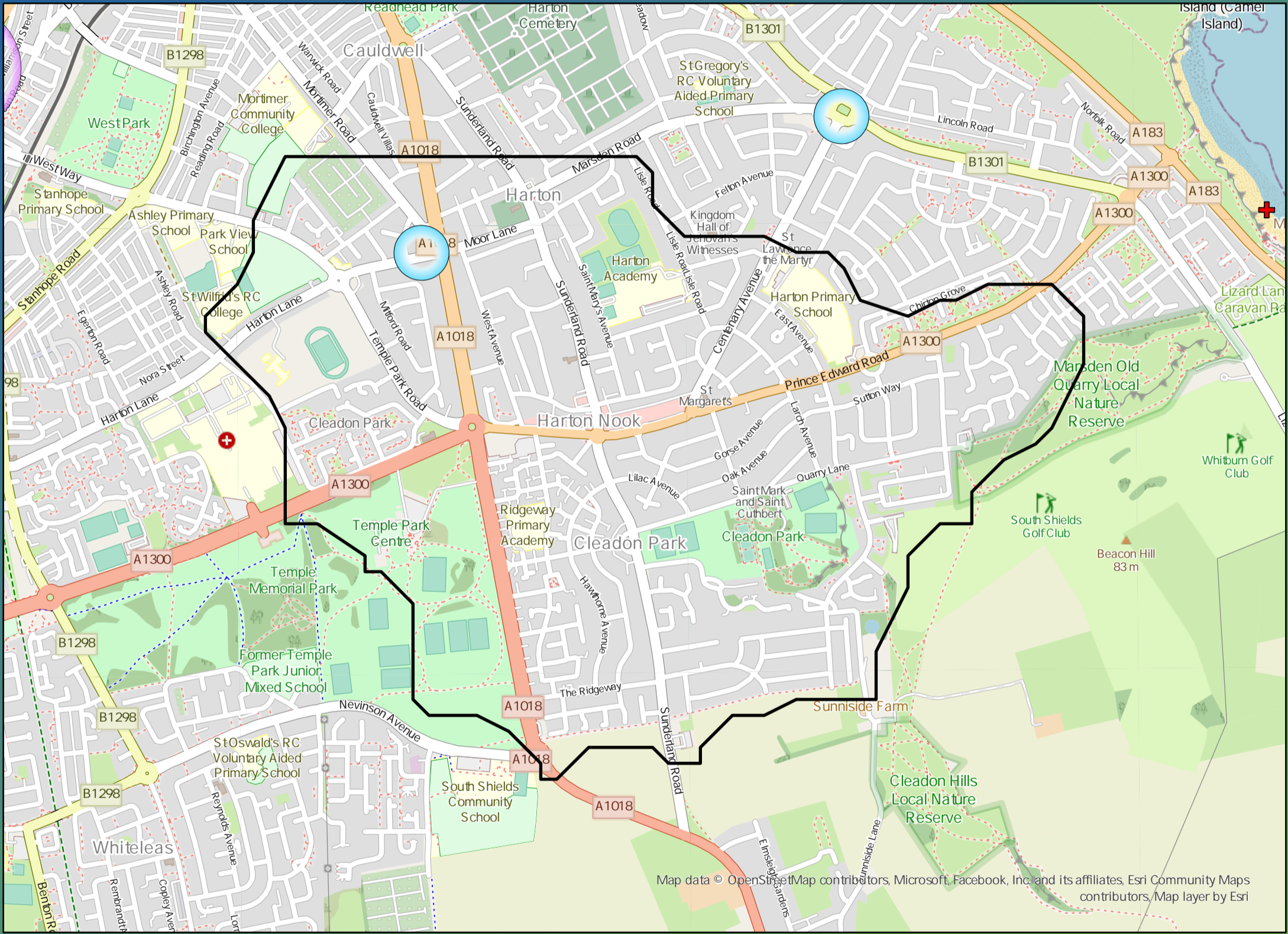
£27,690,000

Benefit

DWMP Drainage Community Summary Howdon



<p>Properties at Risk of Flooding Internally</p>	2020 376	<p>Storm overflows spilling to Rivers</p>	<p>Storm overflows spilling to Bathing Waters</p>	<p>Manholes at Risk of Pollution</p>	<p>Number of spills to the Environment</p>
	2045 0	<p>Site of Special Scientific Interest</p>	<p>Strategic Area of Conservation</p>	<p>Strategic Area for Ecology</p>	



Opportunities

- 3rd Party Stakeholder
- WINEP Programme
- Storm Overflow Programme
- Blue Green Corridor
- Storm Overflow Removal
- Drainage Communities

This is drainage community reference DC_11 which is within the Howdon area.
 The drainage community is classified as low priority based upon it containing a river water asset discharging to an area without environmental concerns.
 The DWMP recommends that storage at the storm overflow(s) and storage in the catchment is created to manage and improve spill and flooding performance.
 The application of growth in the catchment has shown that no investment is required at the sewage treatment works.

£8,860,000

Cost

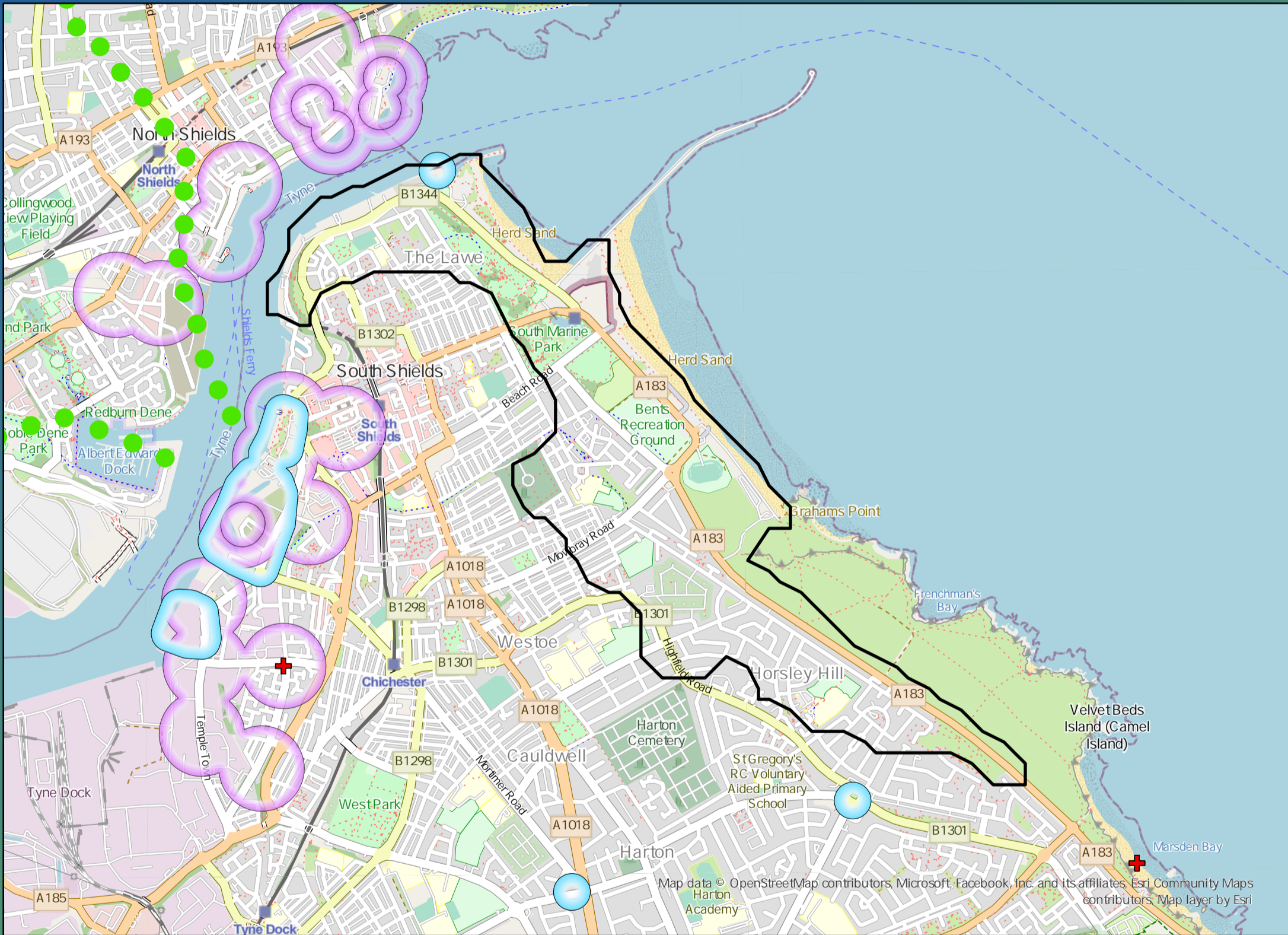
£9,580,000

Benefit

DWMP Drainage Community Summary Howdon



<p>Properties at Risk of Flooding Internally</p>	2020 308	<p>Storm overflows spilling to Rivers</p>	2	<p>Storm overflows spilling to Bathing Waters</p>	0	<p>Manholes at Risk of Pollution</p>	0	<p>Number of spills to the Environment</p>	2020 39
	2045 411	<p>Site of Special Scientific Interest</p>	Yes	<p>Strategic Area of Conservation</p>	No	<p>Strategic Area for Ecology</p>	No		2045 39
	Post Investment 0								Post Investment 20



Opportunities

- 3rd Party Stakeholder
- WINEP Programme
- Storm Overflow Programme
- Blue Green Corridor
- Storm Overflow Removal
- Drainage Communities

This is drainage community reference DC_12 which is within the Howdon area.
 The drainage community is classified as high priority based upon it containing a river water asset discharging to an environmentally sensitive area.
 The DWMP recommends that storage at the storm overflow(s) and storage in the catchment is created to manage and improve spill and flooding performance.
 The application of growth in the catchment has shown that no investment is required at the sewage treatment works.

£5,310,000

Cost

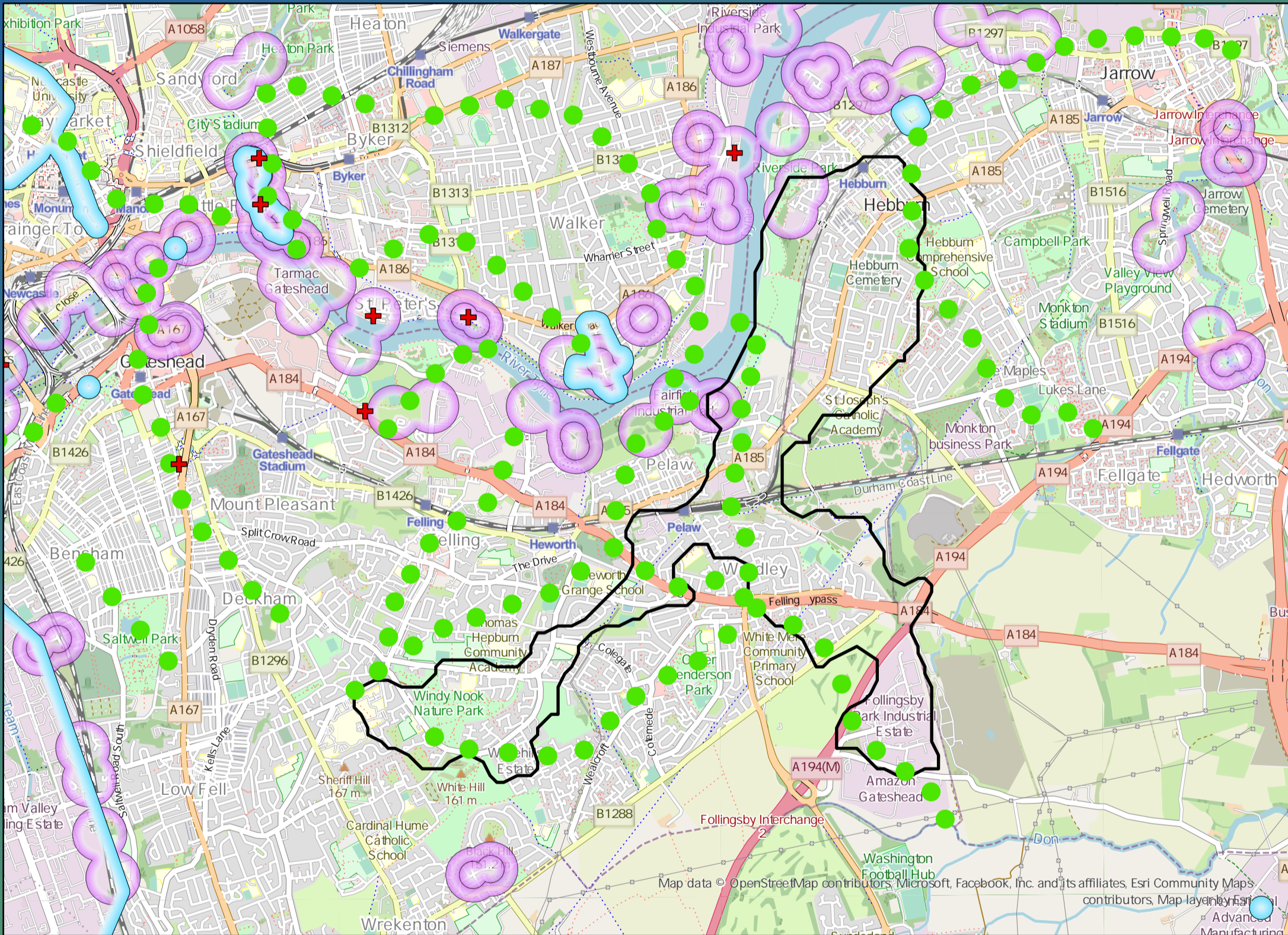
£20,500,000

Benefit

DWMP Drainage Community Summary Howdon



<p>Properties at Risk of Flooding Internally</p>	2020 159	<p>2</p> <p>Storm overflows spilling to Rivers</p>	<p>0</p> <p>Storm overflows spilling to Bathing Waters</p>	<p>0</p> <p>Manholes at Risk of Pollution</p>	<p>Number of spills to the Environment</p>
	2045 160	<p>No</p> <p>Site of Special Scientific Interest</p>	<p>No</p> <p>Strategic Area of Conservation</p>	<p>No</p> <p>Strategic Area for Ecology</p>	
	Post Investment 0				



Opportunities

- 3rd Party Stakeholder
- WINEP Programme
- Storm Overflow Programme
- Blue Green Corridor
- Storm Overflow Removal
- Drainage Communities

This is drainage community reference DC_13 which is within the Howdon area.

The drainage community is classified as low priority based upon it containing a river water asset discharging to an area without environmental concerns.

The DWMP recommends that storage at the storm overflow(s) and storage in the catchment is created to manage and improve spill and flooding performance.

The application of growth in the catchment has shown that no investment is required at the sewage treatment works.

£930,000

Cost

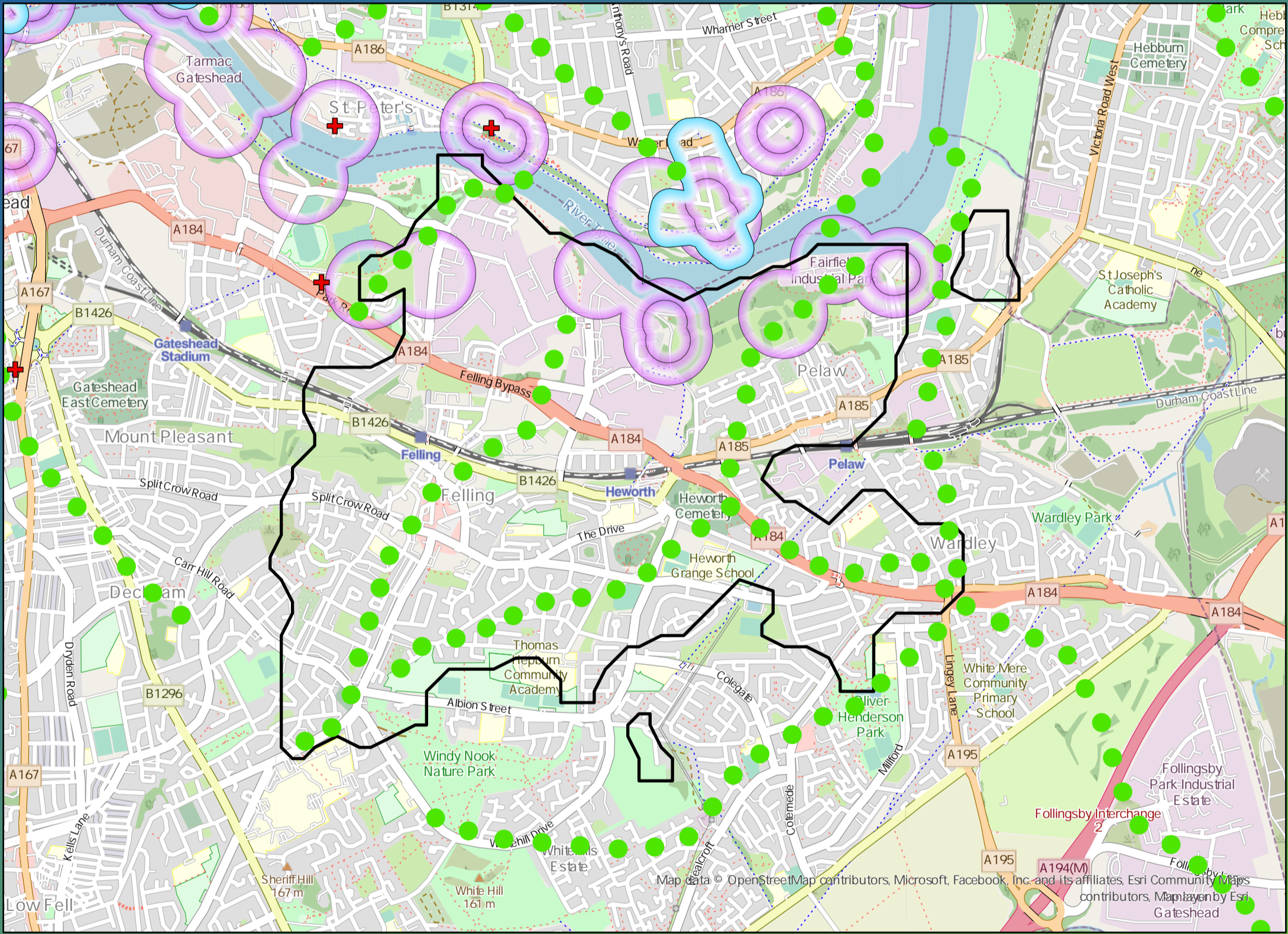
£3,440,000

Benefit

DWMP Drainage Community Summary Howdon



<p>Properties at Risk of Flooding Internally</p>	2020 460	<p>Storm overflows spilling to Rivers</p>	4	<p>Storm overflows spilling to Bathing Waters</p>	0	<p>Manholes at Risk of Pollution</p>	0	<p>Number of spills to the Environment</p>	2020 72
	2045 495	<p>Site of Special Scientific Interest</p>	No	<p>Strategic Area of Conservation</p>	No	<p>Strategic Area for Ecology</p>	No		2045 72
	Post Investment 0							Post Investment 40	



Opportunities

- 3rd Party Stakeholder
- WINEP Programme
- Storm Overflow Programme
- Blue Green Corridor
- Storm Overflow Removal
- Drainage Communities

This is drainage community reference DC_14 which is within the Howdon area.
 The drainage community is classified as low priority based upon it containing a river water asset discharging to an area without environmental concerns.
 The DWMP recommends that storage at the storm overflow(s) and storage in the catchment is created to manage and improve spill and flooding performance.
 The application of growth in the catchment has shown that no investment is required at the sewage treatment works.

£4,450,000

Cost

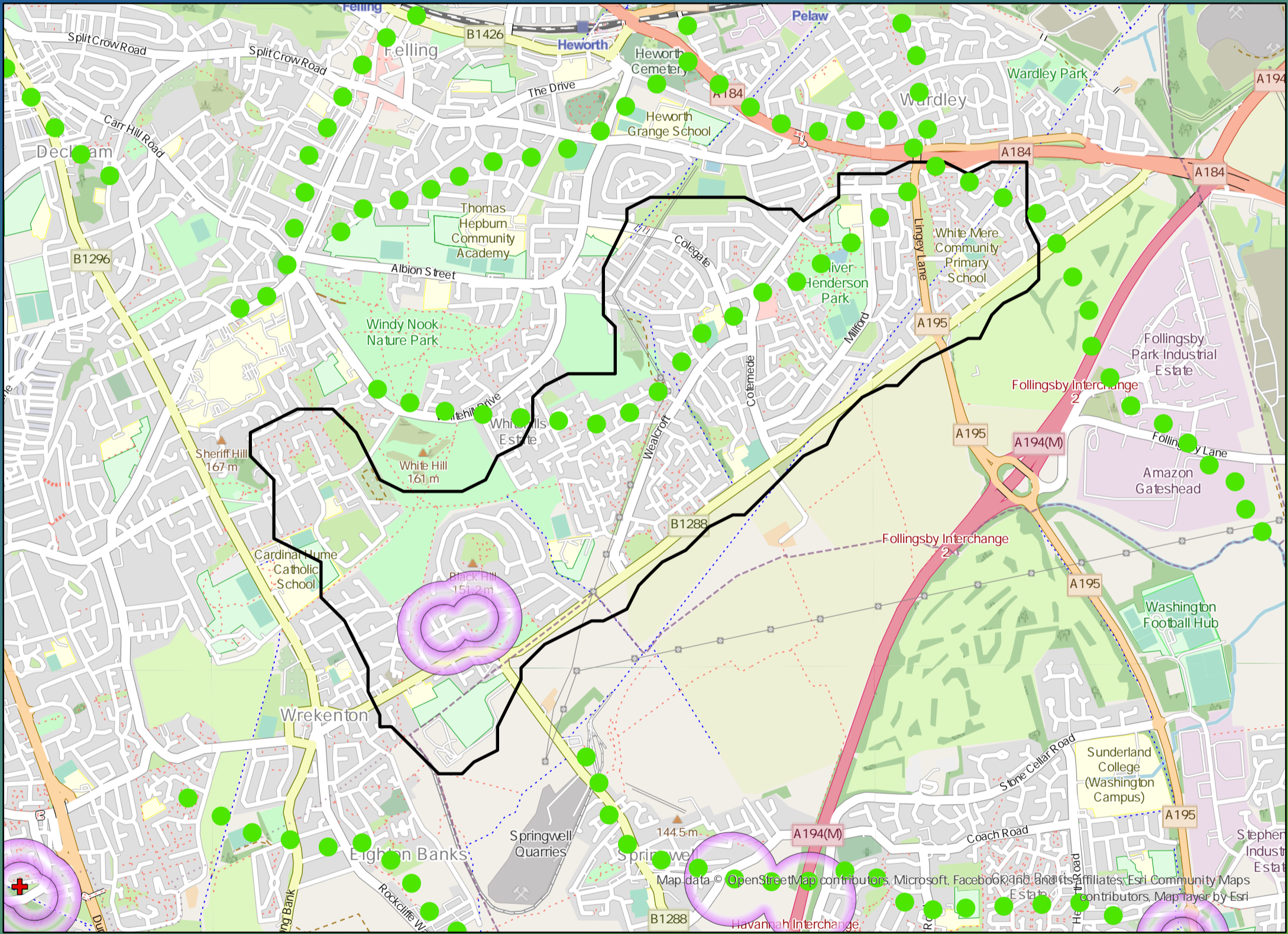
£28,210,000

Benefit

DWMP Drainage Community Summary Howdon



<p>Properties at Risk of Flooding Internally</p>	2020 171	<p>Storm overflows spilling to Rivers</p>	<p>Storm overflows spilling to Bathing Waters</p>	<p>Manholes at Risk of Pollution</p>	<p>Number of spills to the Environment</p>
	2045 0	<p>Site of Special Scientific Interest</p>	<p>Strategic Area of Conservation</p>	<p>Strategic Area for Ecology</p>	
	Post Investment 0	5	0	0	2020 1
	0	No	No	No	2045 1
	0	No	No	No	Post Investment 5



Opportunities

- 3rd Party Stakeholder
- WINEP Programme
- Storm Overflow Programme
- Blue Green Corridor
- Storm Overflow Removal
- Drainage Communities

This is drainage community reference DC_15 which is within the Howdon area. The drainage community is classified as low priority based upon it containing a river water asset discharging to an area without environmental concerns. The DWMP recommends that storage at the storm overflow(s) and storage in the catchment is created to manage and improve spill and flooding performance. The application of growth in the catchment has shown that no investment is required at the sewage treatment works.

£1,930,000

Cost

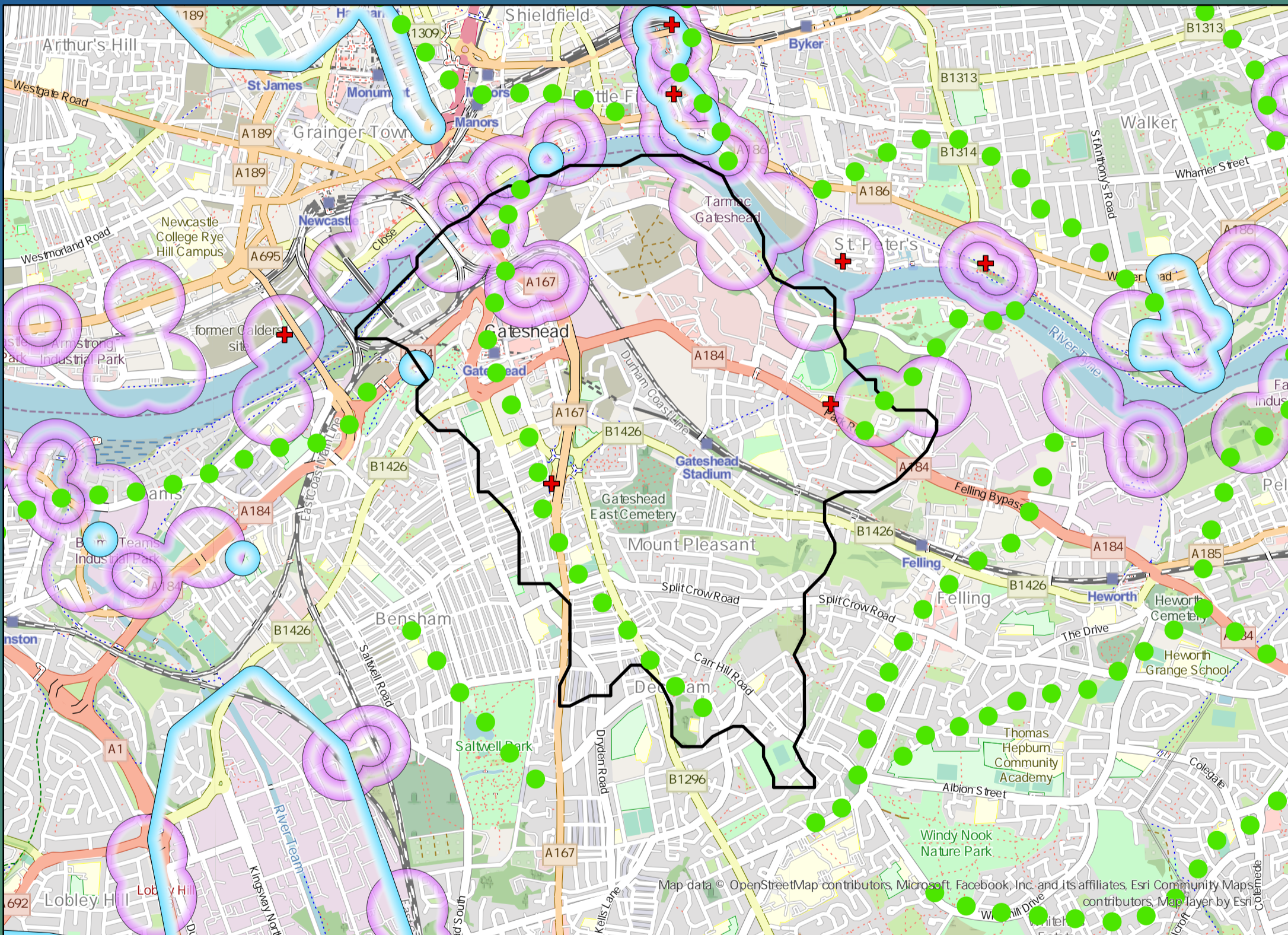
£3,880,000

Benefit

DWMP Drainage Community Summary Howdon



<p>Properties at Risk of Flooding Internally</p>	2020 517	<p>7</p> <p>Storm overflows spilling to Rivers</p>	<p>0</p> <p>Storm overflows spilling to Bathing Waters</p>	<p>1</p> <p>Manholes at Risk of Pollution</p>	<p>Number of spills to the Environment</p>
	2045 609	<p>No</p> <p>Site of Special Scientific Interest</p>	<p>No</p> <p>Strategic Area of Conservation</p>	<p>No</p> <p>Strategic Area for Ecology</p>	
	Post Investment 0				



Opportunities

- 3rd Party Stakeholder
- WINEP Programme
- Storm Overflow Programme
- Blue Green Corridor
- Storm Overflow Removal
- Drainage Communities

This is drainage community reference DC_16 which is within the Howdon area. The drainage community is classified as low priority based upon it containing a river water asset discharging to an area without environmental concerns. The DWMP recommends that storage at the storm overflow(s) and storage in the catchment is created to manage and improve spill and flooding performance. The application of growth in the catchment has shown that no investment is required at the sewage treatment works.

£10,710,000

Cost

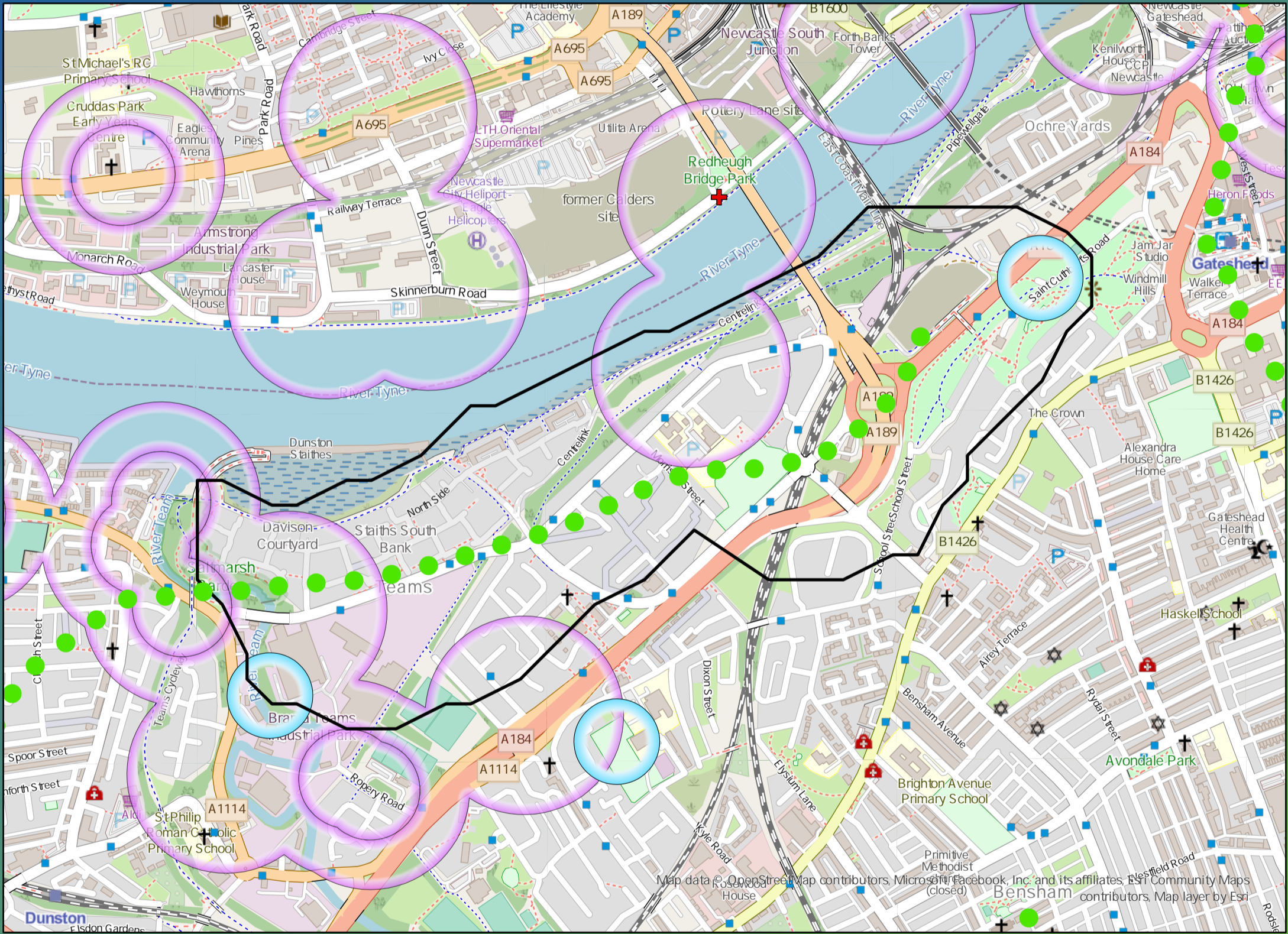
£76,190,000

Benefit

DWMP Drainage Community Summary Howdon



<p>Properties at Risk of Flooding Internally</p>	2020 4	<p>Storm overflows spilling to Rivers</p>	2020 0	<p>Storm overflows spilling to Bathing Waters</p>	2020 0	<p>Manholes at Risk of Pollution</p>	2020 0	<p>Number of spills to the Environment</p>	2020 0
	2045 0		<p>Site of Special Scientific Interest</p>		2045 0		<p>Strategic Area of Conservation</p>		2045 0



Opportunities

- 3rd Party Stakeholder
- WINEP Programme
- Storm Overflow Programme
- Blue Green Corridor
- Storm Overflow Removal
- Drainage Communities

This is drainage community reference DC_17 which is within the Howdon area.

The drainage community is classified as low priority based upon it containing a river water asset discharging to an area without environmental concerns.

The DWMP recommends that no investment is required due to the performance of the storm overflow and level of internal property flood risk in the catchment. The catchment will be monitored for future change.

The application of growth in the catchment has shown that no investment is required at the sewage treatment works.

£0

Cost

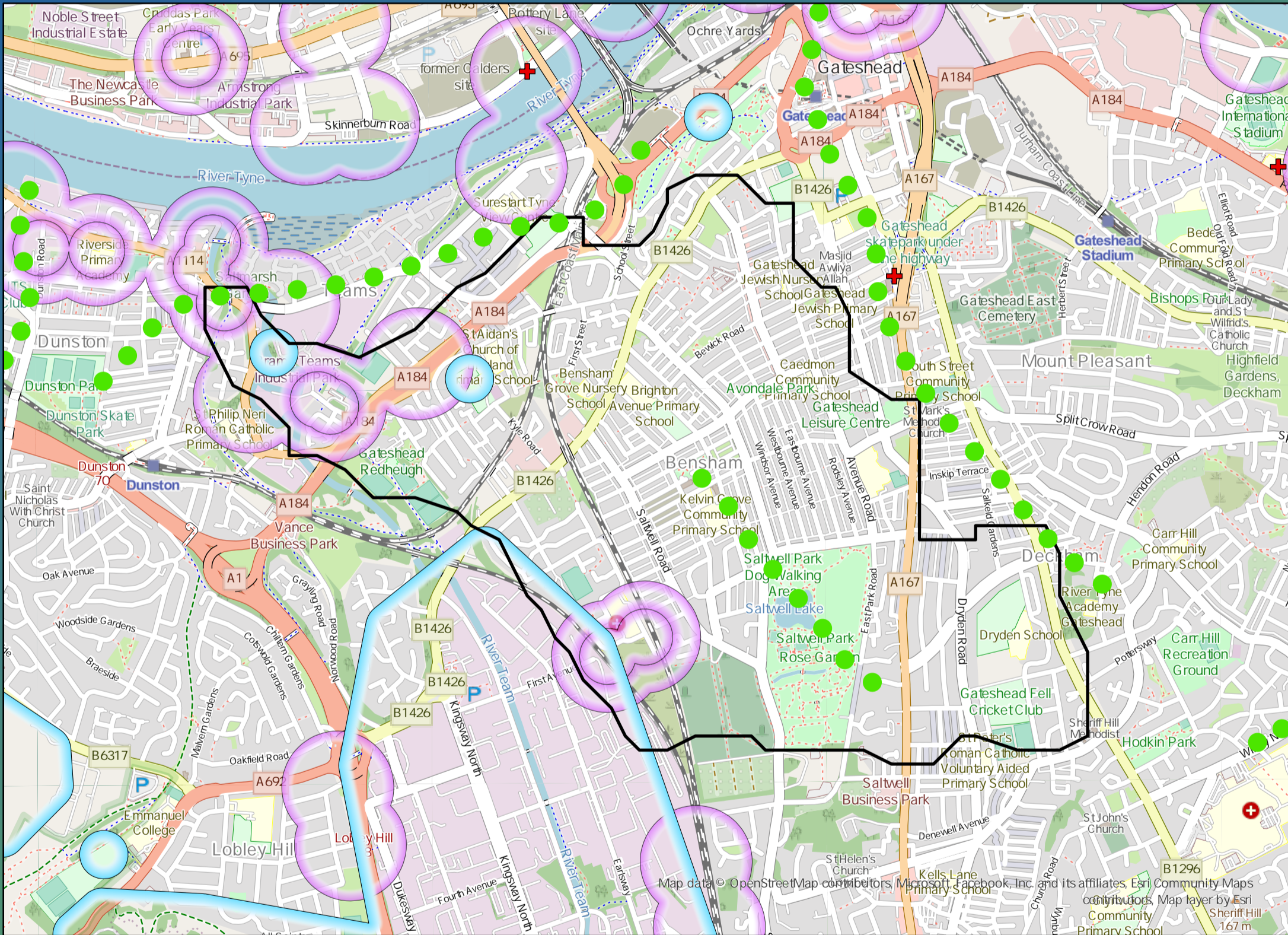
£0

Benefit

DWMP Drainage Community Summary Howdon



<p>Properties at Risk of Flooding Internally</p>	2020 203	<p>0</p>	<p>0</p>	<p>0</p>	<p>Number of spills to the Environment</p>	2020 0
	2045 0	<p>0</p>	<p>0</p>	<p>0</p>		2045 0
<p>Post Investment</p>	0	<p>No</p>	<p>No</p>	<p>No</p>	<p>Post Investment</p>	0
<p>Site of Special Scientific Interest</p>		<p>No</p>	<p>No</p>	<p>No</p>	<p>Post Investment</p>	0



Opportunities

- 3rd Party Stakeholder
- WINEP Programme
- Storm Overflow Programme
- Blue Green Corridor
- Storm Overflow Removal
- Drainage Communities

This is drainage community reference DC_18 which is within the Howdon area.
 The drainage community is classified as low priority based upon it containing a river water asset discharging to an area without environmental concerns.
 The DWMP recommends that storage at the storm overflow(s) and storage in the catchment is created to manage and improve spill and flooding performance.
 The application of growth in the catchment has shown that no investment is required at the sewage treatment works.



£1,360,000

Cost



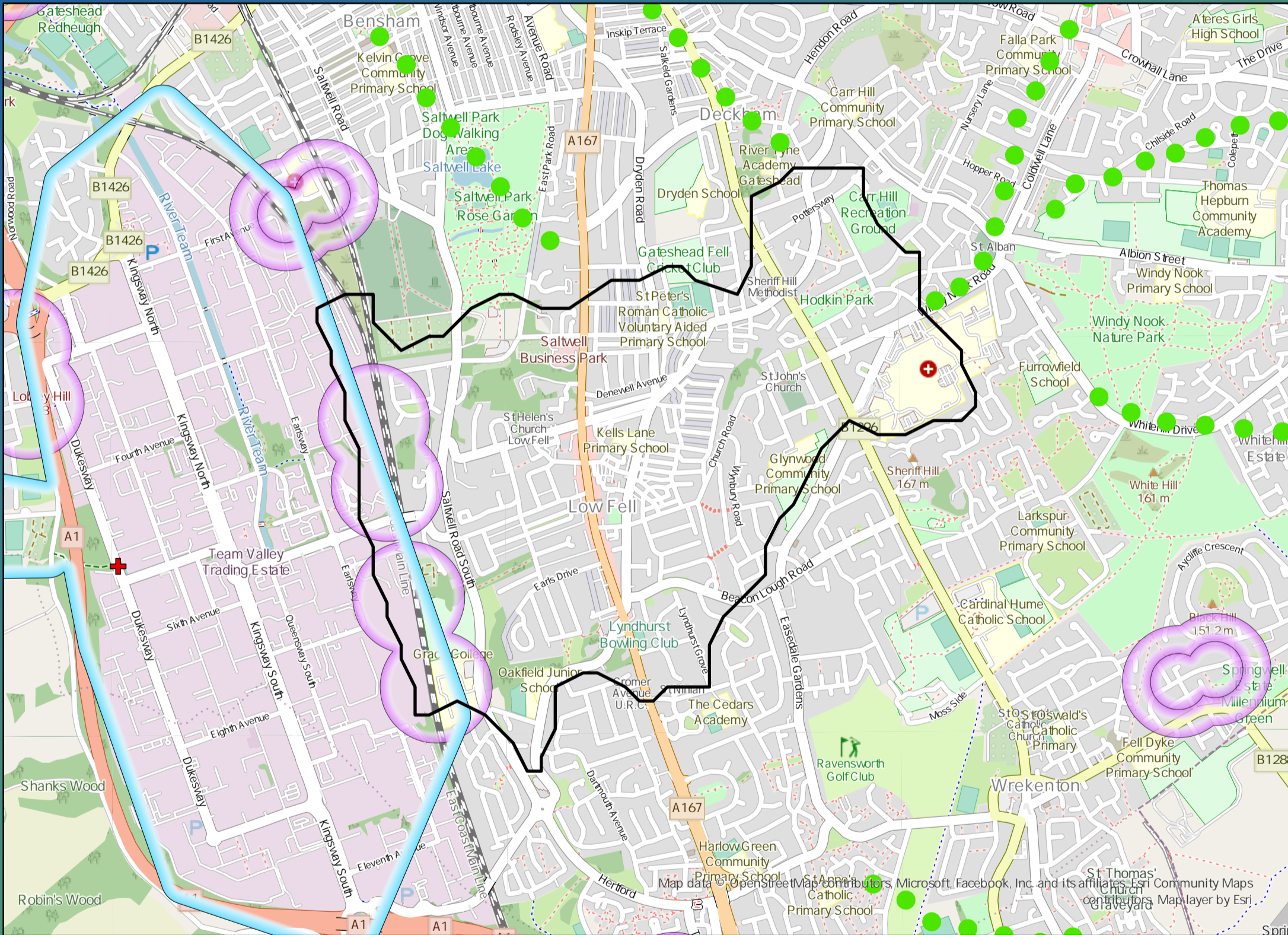
£4,860,000

Benefit

DWMP Drainage Community Summary Howdon



<p>Properties at Risk of Flooding Internally</p>	2020 169	<p>Storm overflows spilling to Rivers</p>	0	<p>Storm overflows spilling to Bathing Waters</p>	0	<p>Manholes at Risk of Pollution</p>	0	<p>Number of spills to the Environment</p>	2020 0
	2045 0	<p>Site of Special Scientific Interest</p>	No	<p>Strategic Area of Conservation</p>	No	<p>Strategic Area for Ecology</p>	No		2045 0



Opportunities

- 3rd Party Stakeholder
- WINEP Programme
- Storm Overflow Programme
- Blue Green Corridor
- Storm Overflow Removal
- Drainage Communities

This is drainage community reference DC_19 which is within the Howdon area.
 The drainage community is classified as low priority based upon it containing a river water asset discharging to an area without environmental concerns.
 The DWMP recommends that storage at the storm overflow(s) and storage in the catchment is created to manage and improve spill and flooding performance.
 The application of growth in the catchment has shown that no investment is required at the sewage treatment works.



£800,000

Cost



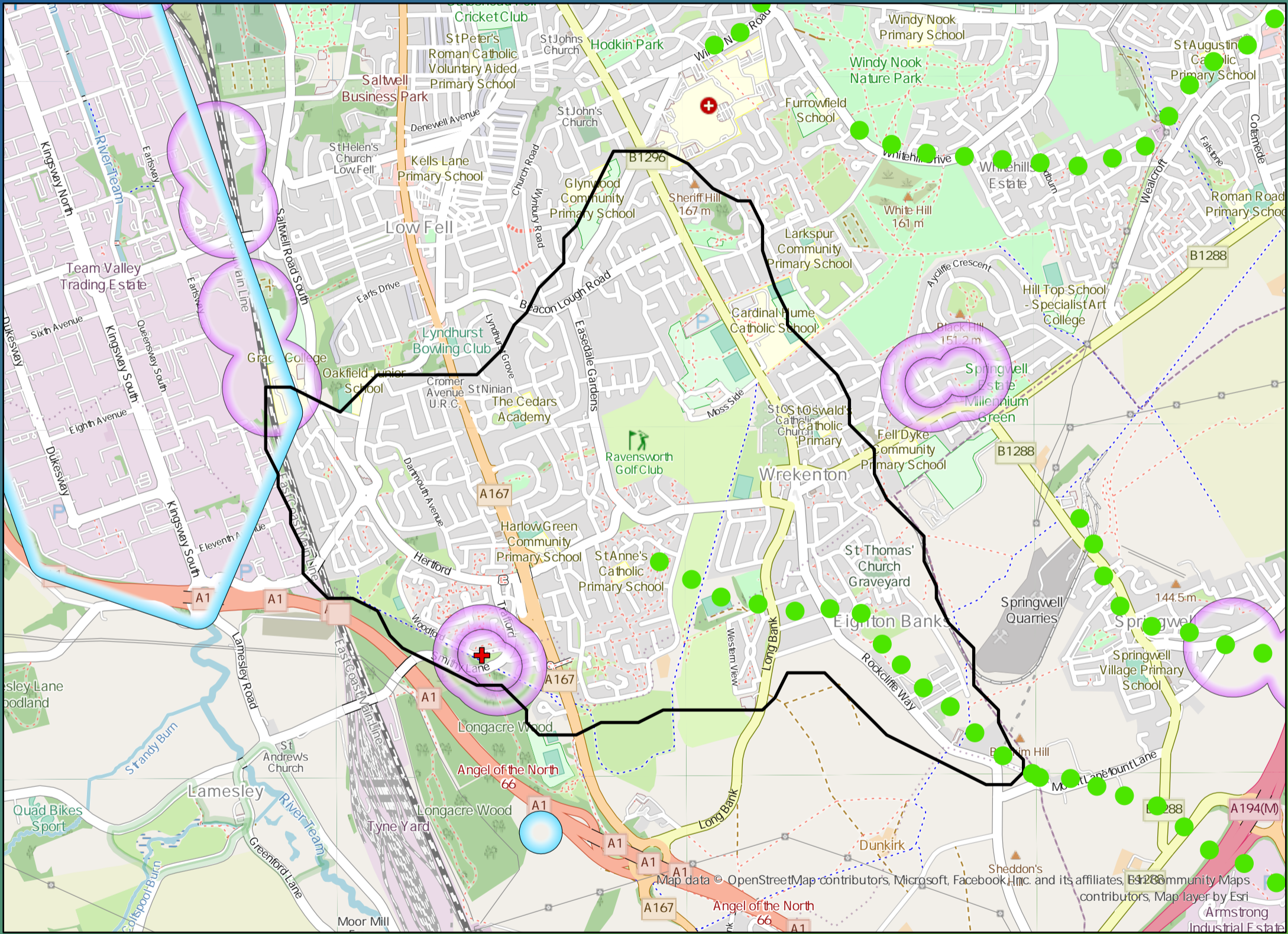
£3,350,000

Benefit

DWMP Drainage Community Summary Howdon



<p>Properties at Risk of Flooding Internally</p>	2020 58	<p>0</p>	<p>0</p>	<p>0</p>	<p>Number of spills to the Environment</p>
	2045 0	<p>0</p>	<p>0</p>	<p>0</p>	
<p>Post Investment</p>	0	<p>No</p>	<p>No</p>	<p>No</p>	<p>Post Investment</p>
	0	<p>Site of Special Scientific Interest</p>	<p>Strategic Area of Conservation</p>	<p>Strategic Area for Ecology</p>	0



Opportunities

- 3rd Party Stakeholder
- WINEP Programme
- Storm Overflow Programme
- Blue Green Corridor
- Storm Overflow Removal
- Drainage Communities

This is drainage community reference DC_20 which is within the Howdon area.

The drainage community is classified as low priority based upon it containing a river water asset discharging to an area without environmental concerns.

The DWMP recommends that storage at the storm overflow(s) and storage in the catchment is created to manage and improve spill and flooding performance.

The application of growth in the catchment has shown that no investment is required at the sewage treatment works.

£760,000

Cost

£1,180,000

Benefit