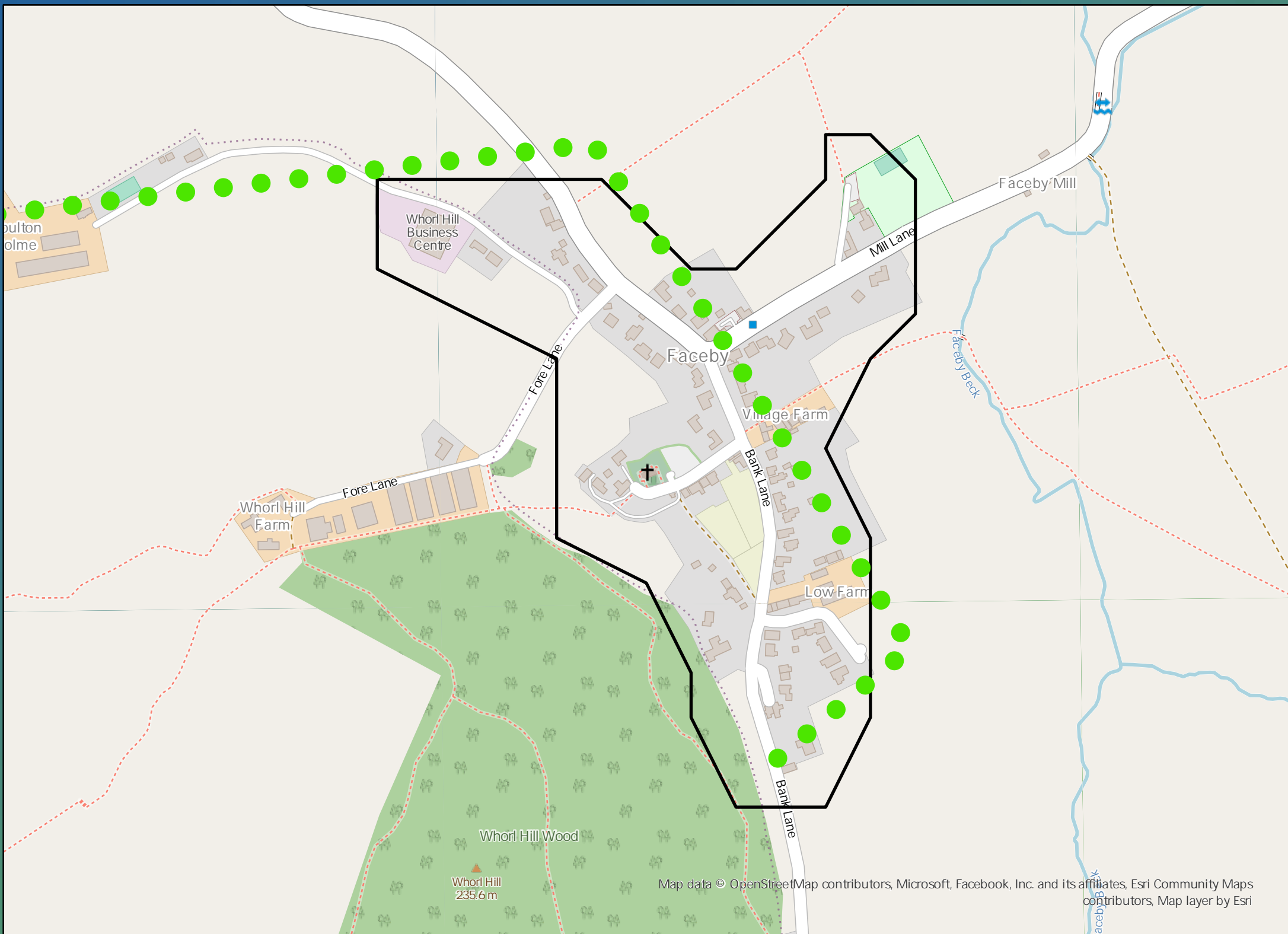


# DWMP Drainage Community Summary Swainby



<p>Properties at Risk of Flooding Internally</p>	2020 <b>5</b>	<p>Storm overflows spilling to Rivers</p>	<p>Storm overflows spilling to Bathing Waters</p>	<p>Manholes at Risk of Pollution</p>	<p>Number of spills to the Environment</p>
	2045 <b>0</b>	<p>Site of Special Scientific Interest</p>	<p>Strategic Area of Conservation</p>	<p>Strategic Area for Ecology</p>	



## Opportunities

- 3rd Party Stakeholder
- WINEP Programme
- Storm Overflow Programme
- Blue Green Corridor
- Storm Overflow Removal
- Drainage Communities

This is drainage community reference DC\_01 which is within the Swainby area.

The drainage community is classified as low priority based upon it containing a river water asset discharging to an area without environmental concerns.

The DWMP recommends that storage at the storm overflow(s) and storage in the catchment is created to manage and improve spill and flooding performance.

The application of growth in the catchment has shown that no investment is required at the sewage treatment works.

**£790,000**

Cost

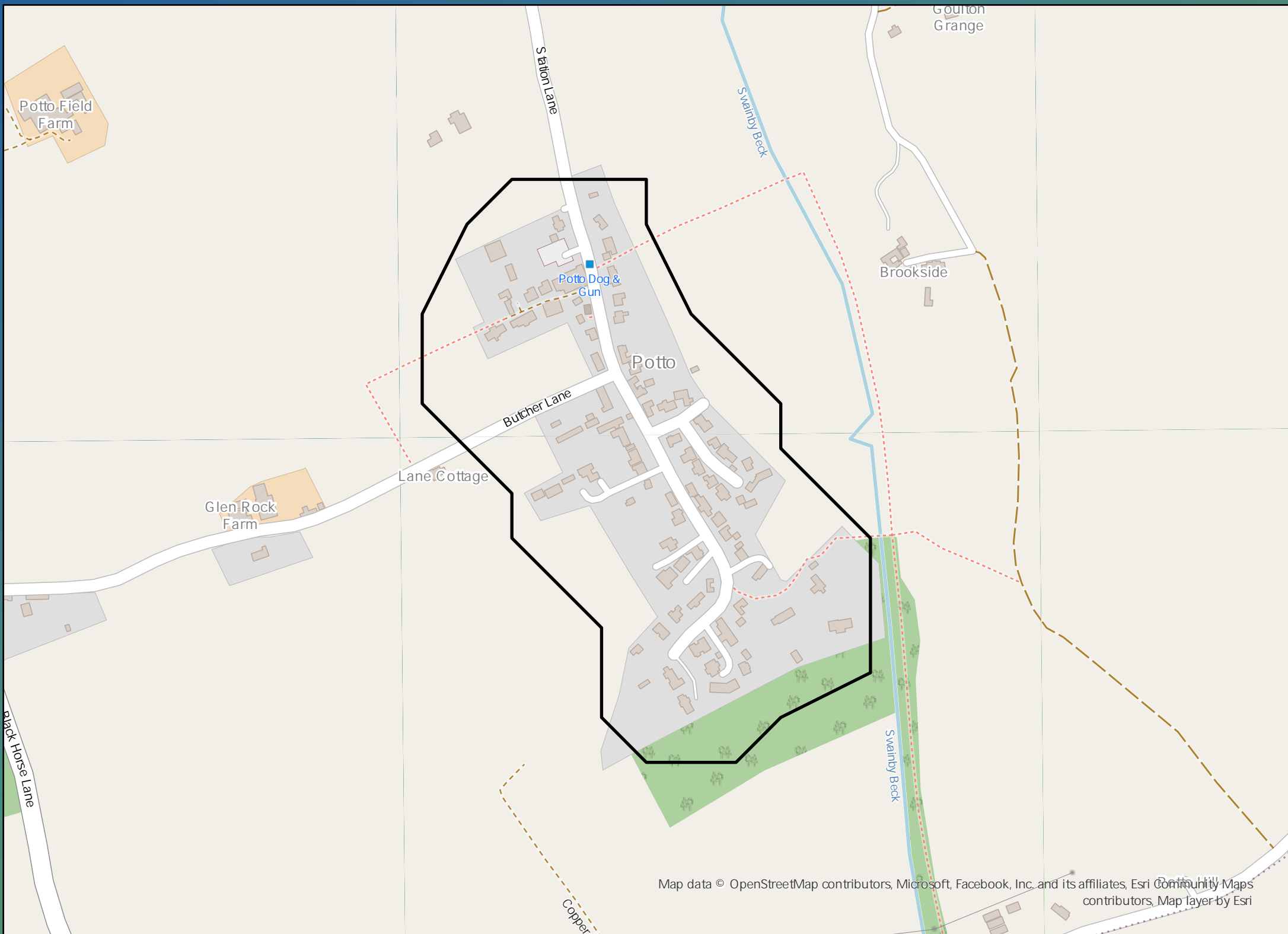
**£120,000**

Benefit

# DWMP Drainage Community Summary Swainby



<p>Properties at Risk of Flooding Internally</p>	2020 <b>3</b>	<p>Storm overflows spilling to Rivers</p>	<p>Storm overflows spilling to Bathing Waters</p>	<p>Manholes at Risk of Pollution</p>	<p>Number of spills to the Environment</p>
	2045 <b>0</b>	<p>Site of Special Scientific Interest</p>	<p>Strategic Area of Conservation</p>	<p>Strategic Area for Ecology</p>	
Post Investment <b>0</b>					



## Opportunities

- 3rd Party Stakeholder
- WINEP Programme
- Storm Overflow Programme
- Blue Green Corridor
- Storm Overflow Removal
- Drainage Communities

This is drainage community reference DC\_02 which is within the Swainby area.  
 The drainage community is classified as low priority based upon it containing a river water asset discharging to an area without environmental concerns.  
 The DWMP recommends that storage at the storm overflow(s) and storage in the catchment is created to manage and improve spill and flooding performance.  
 The application of growth in the catchment has shown that no investment is required at the sewage treatment works.

# £1,680,000

Cost

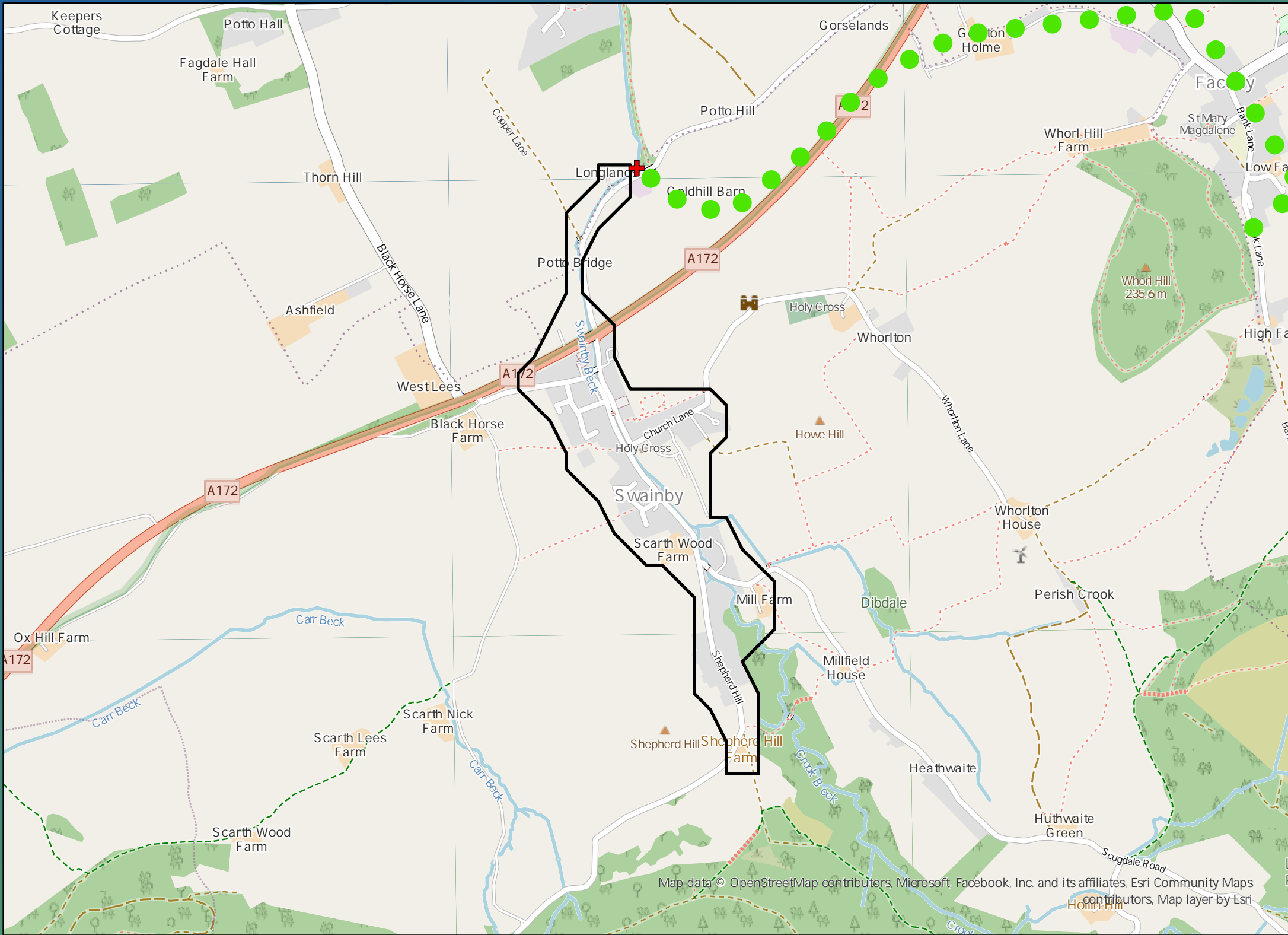
# £60,000

Benefit

# DWMP Drainage Community Summary Swainby



<p>Properties at Risk of Flooding Internally</p>	2020 <b>1</b>	<p>Storm overflows spilling to Rivers</p>	<p>Storm overflows spilling to Bathing Waters</p>	<p>Manholes at Risk of Pollution</p>	<p>Number of spills to the Environment</p>
	2045 <b>0</b>	<p>Site of Special Scientific Interest</p>	<p>Strategic Area of Conservation</p>	<p>Strategic Area for Ecology</p>	
	Post Investment <b>0</b>				Post Investment <b>0</b>



## Opportunities

- 3rd Party Stakeholder
- WINEP Programme
- Storm Overflow Programme
- Blue Green Corridor
- Storm Overflow Removal
- Drainage Communities

This is drainage community reference DC\_03 which is within the Swainby area.

The drainage community is classified as low priority based upon it containing a river water asset discharging to an area without environmental concerns.

The DWMP recommends that no investment is required due to the performance of the storm overflow and level of internal property flood risk in the catchment. The catchment will be monitored for future change.

The application of growth in the catchment has shown that no investment is required at the sewage treatment works.

**£0**

Cost

**£0**

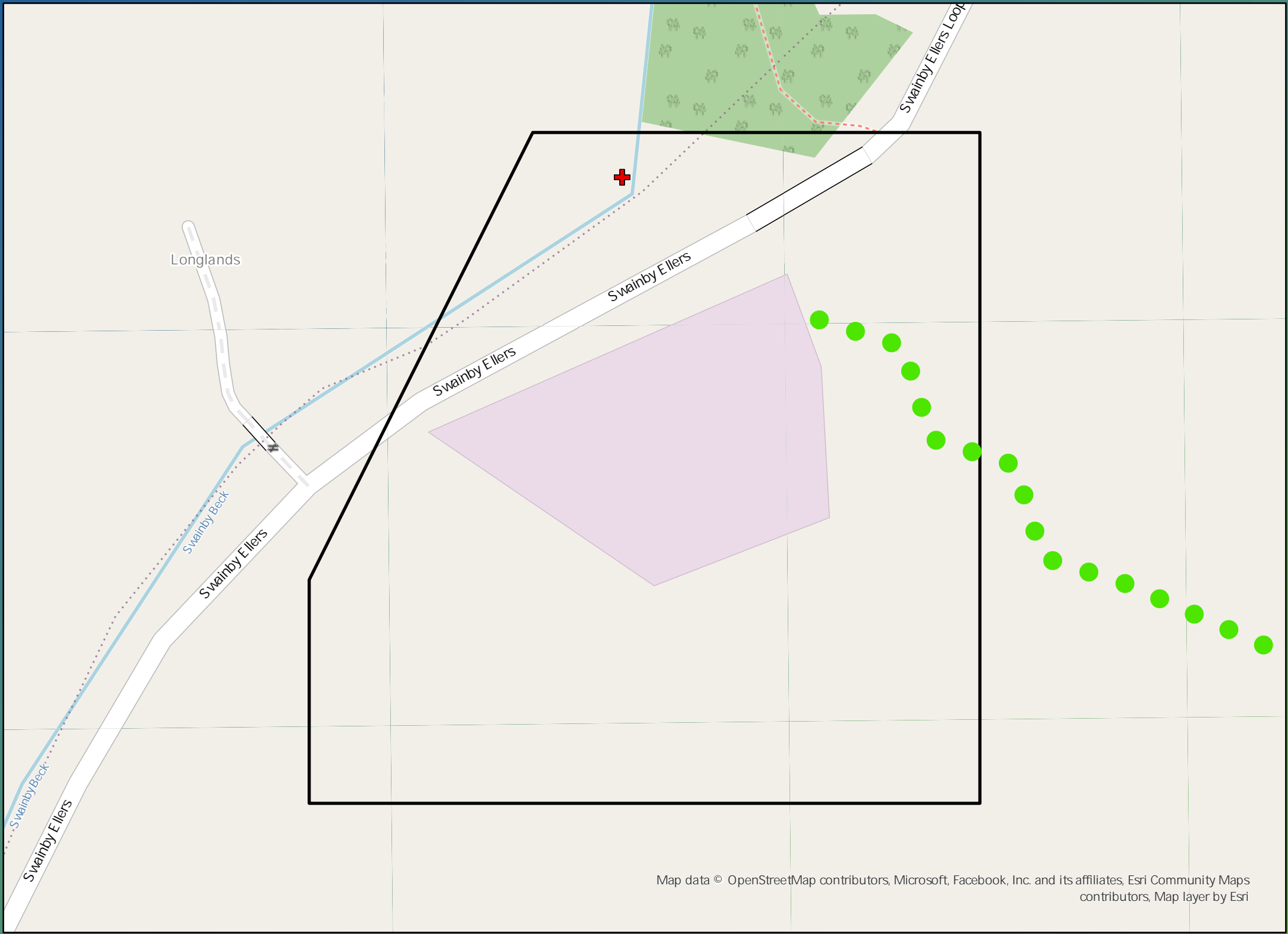
Benefit



# DWMP Drainage Community Summary Swainby



<p>Properties at Risk of Flooding Internally</p>	2020 <b>0</b>	<p>Storm overflows spilling to Rivers</p>	<b>1</b>	<p>Storm overflows spilling to Bathing Waters</p>	<b>0</b>	<p>Manholes at Risk of Pollution</p>	<b>0</b>	<p>Number of spills to the Environment</p>	2020 <b>54</b>
	2045 <b>0</b>	<p>Site of Special Scientific Interest</p>	<b>No</b>	<p>Strategic Area of Conservation</p>	<b>No</b>	<p>Strategic Area for Ecology</p>	<b>No</b>		2045 <b>54</b>
	Post Investment <b>0</b>								Post Investment <b>10</b>



## Opportunities

- 3rd Party Stakeholder
- WINEP Programme
- Storm Overflow Programme
- Blue Green Corridor
- Storm Overflow Removal
- Drainage Communities

This is drainage community reference DC\_04 which is within the Swainby area.  
 The drainage community is classified as low priority based upon it containing a river water asset discharging to an area without environmental concerns.  
 The DWMP recommends that storage at the storm overflow(s) and storage in the catchment is created to manage and improve spill and flooding performance.  
 The application of growth in the catchment has shown that no investment is required at the sewage treatment works.

**£1,030,000**

Cost

**£6,590,000**

Benefit