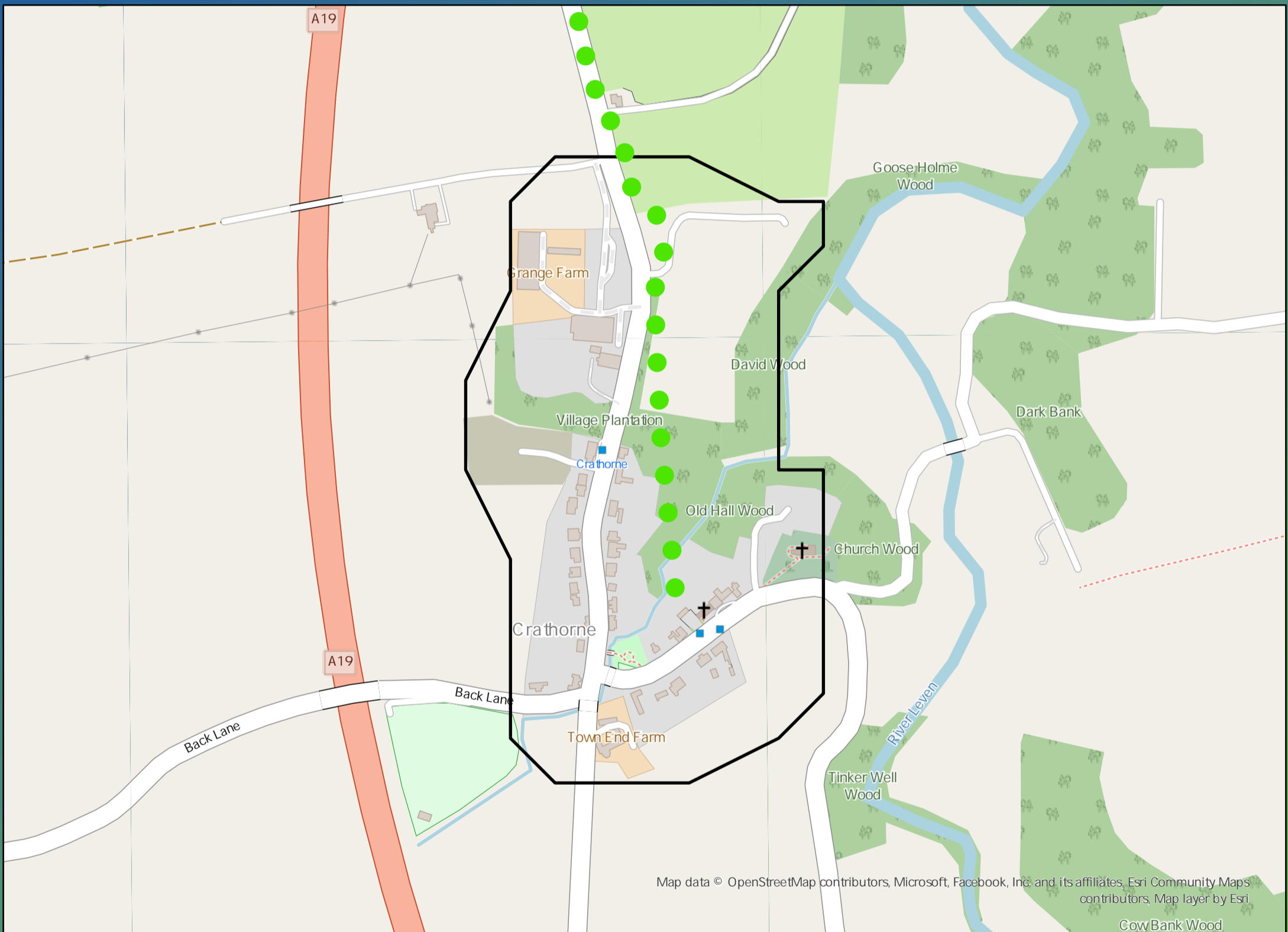


DWMP Drainage Community Summary Kirklevington



<p>Properties at Risk of Flooding Internally</p>	2020 0	<p>Storm overflows spilling to Rivers</p>	<p>Storm overflows spilling to Bathing Waters</p>	<p>Manholes at Risk of Pollution</p>	<p>Number of spills to the Environment</p>
	2045 0	<p>Site of Special Scientific Interest</p>	<p>Strategic Area of Conservation</p>	<p>Strategic Area for Ecology</p>	
	Post Investment 0	1	0	0	2020 17
	Post Investment 0	No	No	No	2045 17
	Post Investment 0				Post Investment 10



Opportunities

- 3rd Party Stakeholder
- WINEP Programme
- Storm Overflow Programme
- Blue Green Corridor
- Storm Overflow Removal
- Drainage Communities

This is drainage community reference DC_01 which is within the Kirklevington area. The drainage community is classified as low priority based upon it containing a river water asset discharging to an area without environmental concerns. The DWMP recommends that storage at the storm overflow(s) and storage in the catchment is created to manage and improve spill and flooding performance. The application of growth has shown that investment is required at the sewage treatment work before 2045.

£1,530,000

Cost

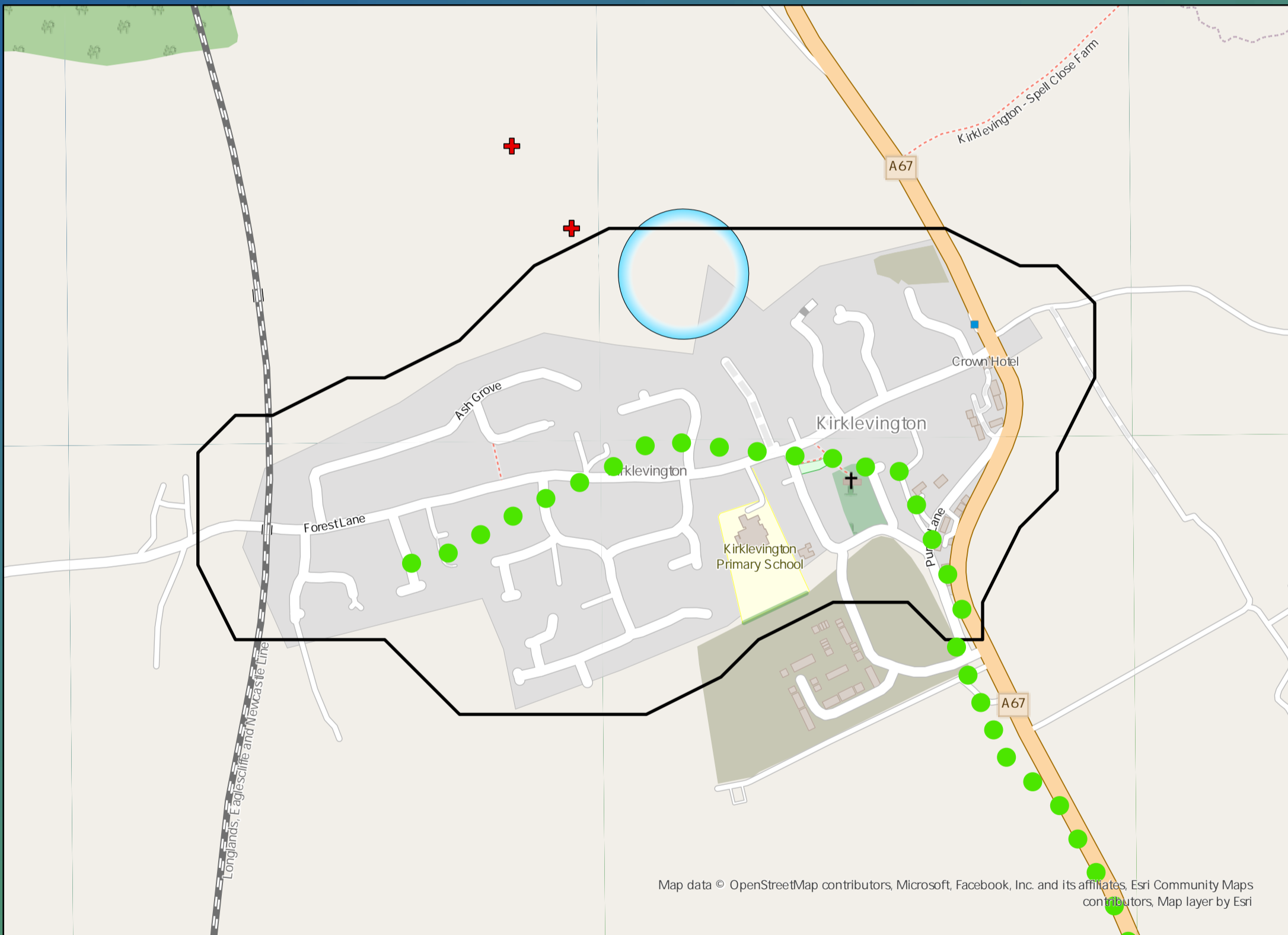
£2,080,000

Benefit

DWMP Drainage Community Summary Kirklevington



<p>Properties at Risk of Flooding Internally</p>	2020 6	<p>Storm overflows spilling to Rivers</p>	<p>Storm overflows spilling to Bathing Waters</p>	<p>Manholes at Risk of Pollution</p>	<p>Number of spills to the Environment</p>
	2045 0 Post Investment 0	<p>Site of Special Scientific Interest</p>	<p>Strategic Area of Conservation</p>	<p>Strategic Area for Ecology</p>	



Opportunities

- 3rd Party Stakeholder
- WINEP Programme
- Storm Overflow Programme
- Blue Green Corridor
- Storm Overflow Removal
- Drainage Communities

This is drainage community reference DC_02 which is within the Kirklevington area.
 The drainage community is classified as low priority based upon it containing a river water asset discharging to an area without environmental concerns.
 The DWMP recommends that storage at the storm overflow(s) and storage in the catchment is created to manage and improve spill and flooding performance.
 The application of growth has shown that investment is required at the sewage treatment work before 2045.

£1,030,000

Cost

£170,000

Benefit