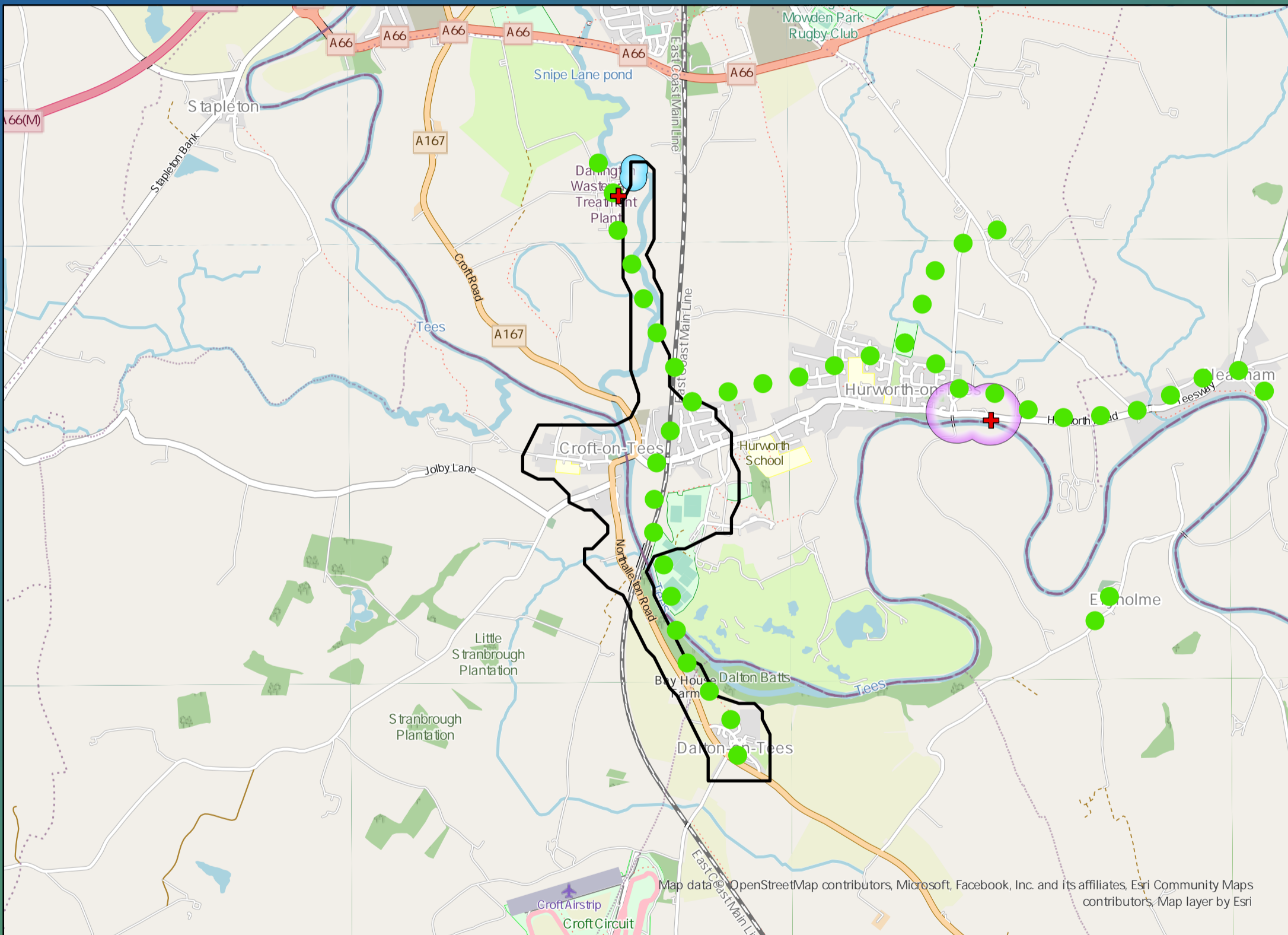


DWMP Drainage Community Summary Stressholme



<p>Properties at Risk of Flooding Internally</p>	2020 7	<p>2</p> <p>Storm overflows spilling to Rivers</p>	<p>0</p> <p>Storm overflows spilling to Bathing Waters</p>	<p>9</p> <p>Manholes at Risk of Pollution</p>	<p>Number of spills to the Environment</p>
	2045 13	<p>No</p> <p>Site of Special Scientific Interest</p>	<p>No</p> <p>Strategic Area of Conservation</p>	<p>Yes</p> <p>Strategic Area for Ecology</p>	
	Post Investment 0				2045 60
					Post Investment 20



Opportunities

- 3rd Party Stakeholder
- WINEP Programme
- Storm Overflow Programme
- Blue Green Corridor
- Storm Overflow Removal
- Drainage Communities

This is drainage community reference DC_01 which is within the Stressholme area. The drainage community is classified as high priority based upon it containing a river water asset discharging to an environmentally sensitive area. The DWMP recommends that storage at the storm overflow(s) and storage in the catchment is created to manage and improve spill and flooding performance. The application of growth has shown that investment is required at the sewage treatment work before 2045.



£1,770,000

Cost



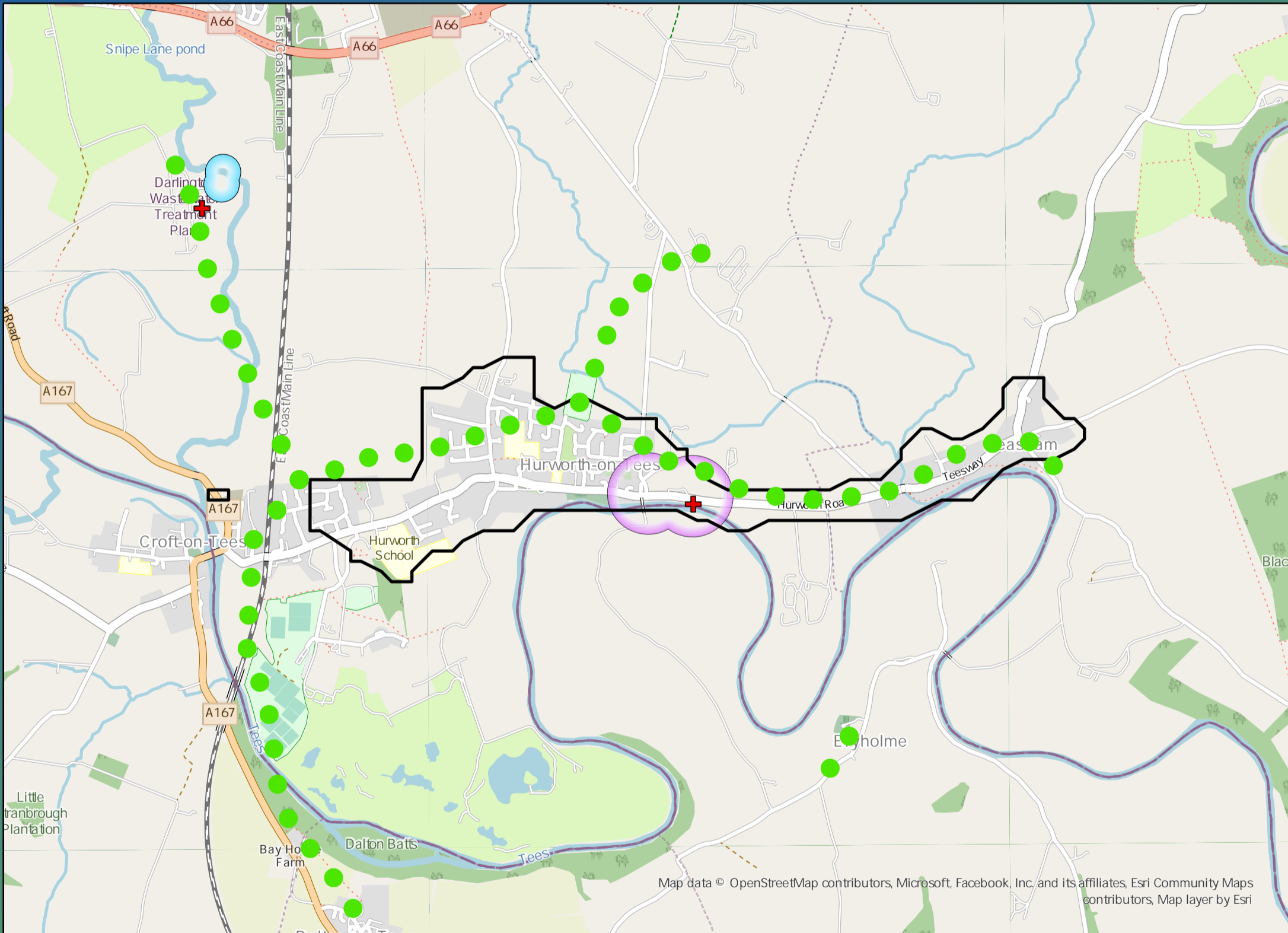
£7,810,000

Benefit

DWMP Drainage Community Summary Stressholme



<p>Properties at Risk of Flooding Internally</p>	2020 26	<p>2</p> <p>Storm overflows spilling to Rivers</p>	<p>0</p> <p>Storm overflows spilling to Bathing Waters</p>	<p>14</p> <p>Manholes at Risk of Pollution</p>	<p>Number of spills to the Environment</p>
	2045 58 Post Investment 0	<p>No</p> <p>Site of Special Scientific Interest</p>	<p>No</p> <p>Strategic Area of Conservation</p>	<p>No</p> <p>Strategic Area for Ecology</p>	



Opportunities

- 3rd Party Stakeholder
- WINEP Programme
- Storm Overflow Programme
- Blue Green Corridor
- Storm Overflow Removal
- Drainage Communities

This is drainage community reference DC_02 which is within the Stressholme area.
 The drainage community is classified as medium priority based upon it containing a RNAG asset discharging to an area without environmental concerns.
 The DWMP recommends that storage at the storm overflow(s) and storage in the catchment is created to manage and improve spill and flooding performance.
 The application of growth has shown that investment is required at the sewage treatment work before 2045.

£2,990,000

Cost

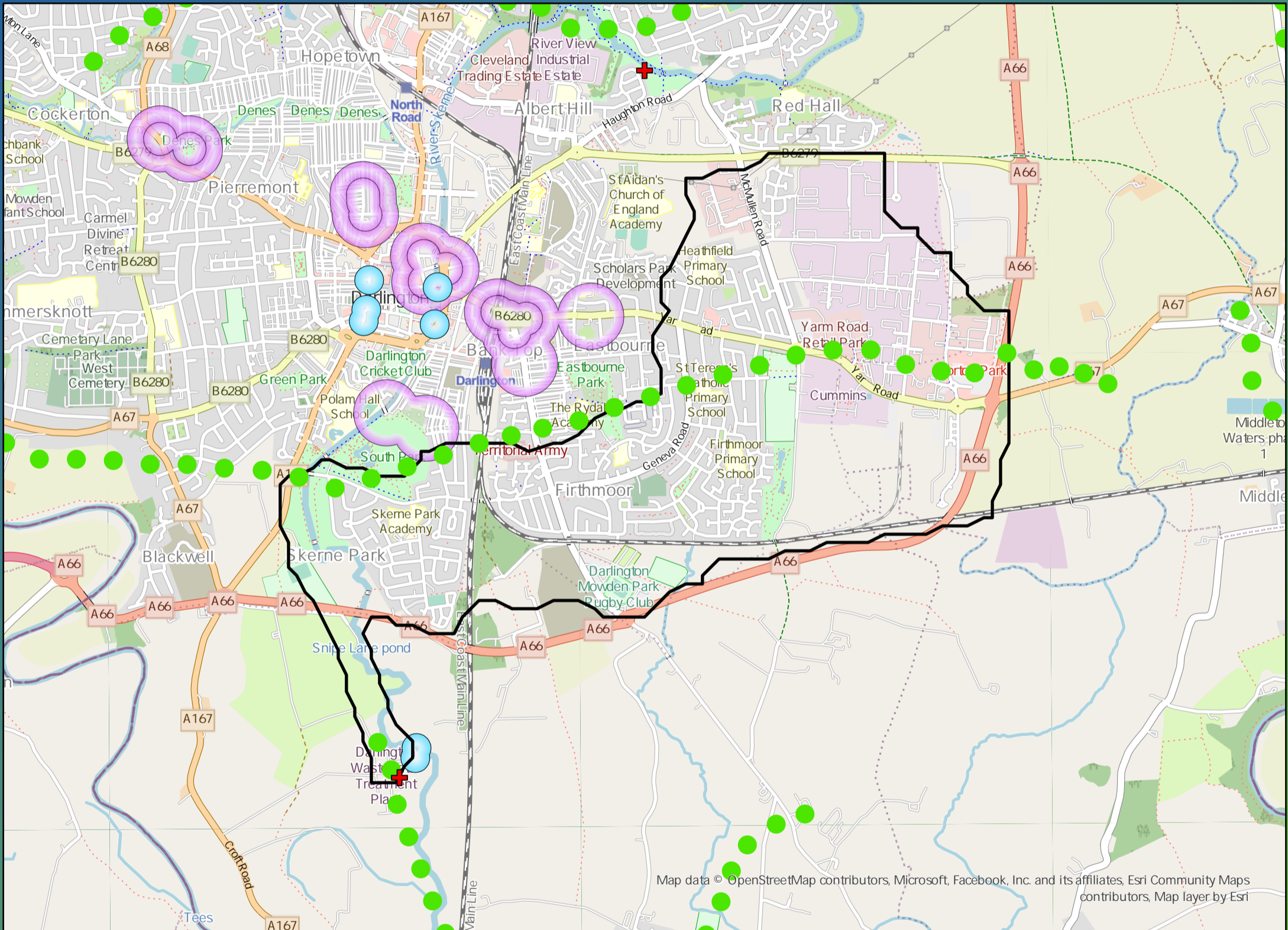
£8,560,000

Benefit

DWMP Drainage Community Summary Stressholme



<p>Properties at Risk of Flooding Internally</p>	2020 99	<p>3</p> <p>Storm overflows spilling to Rivers</p>	<p>0</p> <p>Storm overflows spilling to Bathing Waters</p>	<p>0</p> <p>Manholes at Risk of Pollution</p>	<p>Number of spills to the Environment</p>
	2045 0	<p>No</p> <p>Site of Special Scientific Interest</p>	<p>No</p> <p>Strategic Area of Conservation</p>	<p>Yes</p> <p>Strategic Area for Ecology</p>	
	Post Investment 0				



Opportunities

- 3rd Party Stakeholder
- WINEP Programme
- Storm Overflow Programme
- Blue Green Corridor
- Storm Overflow Removal
- Drainage Communities

This is drainage community reference DC_04 which is within the Stressholme area. The drainage community is classified as high priority based upon it containing a river water asset discharging to an environmentally sensitive area. The DWMP recommends that storage at the storm overflow(s) and storage in the catchment is created to manage and improve spill and flooding performance. The application of growth has shown that investment is required at the sewage treatment work before 2045.

£2,680,000

Cost

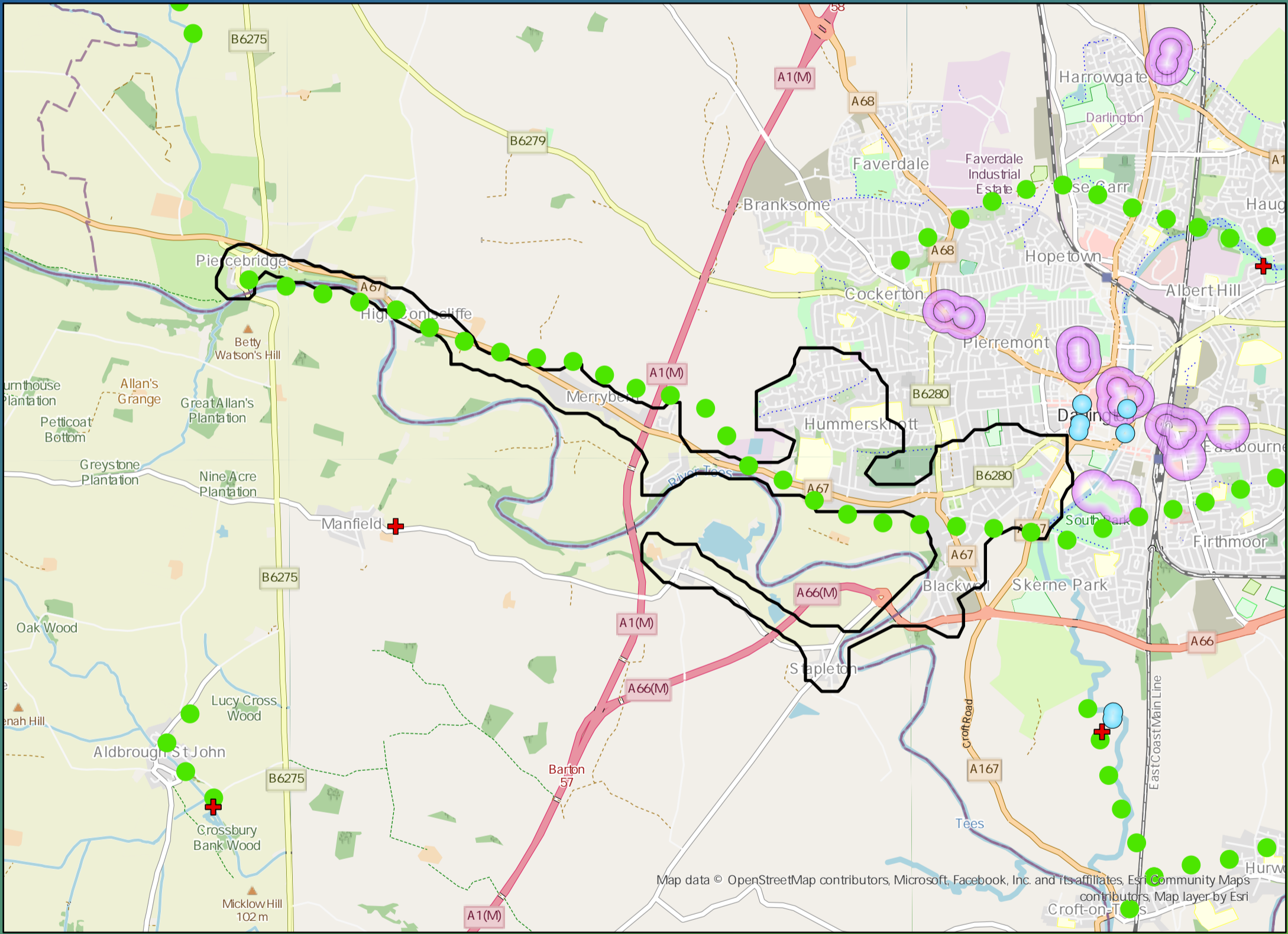
£47,400,000

Benefit

DWMP Drainage Community Summary Stressholme



<p>Properties at Risk of Flooding Internally</p>	2020 53	<p>3</p> <p>Storm overflows spilling to Rivers</p>	<p>0</p> <p>Storm overflows spilling to Bathing Waters</p>	<p>5</p> <p>Manholes at Risk of Pollution</p>	<p>Number of spills to the Environment</p>
	2045 101	<p>No</p> <p>Site of Special Scientific Interest</p>	<p>No</p> <p>Strategic Area of Conservation</p>	<p>No</p> <p>Strategic Area for Ecology</p>	
	Post Investment 0				2045 243
					Post Investment 30



Map data © OpenStreetMap contributors, Microsoft, Facebook, Inc. and its affiliates, Esri Community Maps contributors, Map layer by Esri

Opportunities

- 3rd Party Stakeholder
- WINEP Programme
- Storm Overflow Programme
- Blue Green Corridor
- Storm Overflow Removal
- Drainage Communities

This is drainage community reference DC_05 which is within the Stressholme area. The drainage community is classified as low priority based upon it containing a river water asset discharging to an area without environmental concerns. The DWMP recommends that storage at the storm overflow(s) and storage in the catchment is created to manage and improve spill and flooding performance. The application of growth has shown that investment is required at the sewage treatment work before 2045.

£4,070,000

Cost

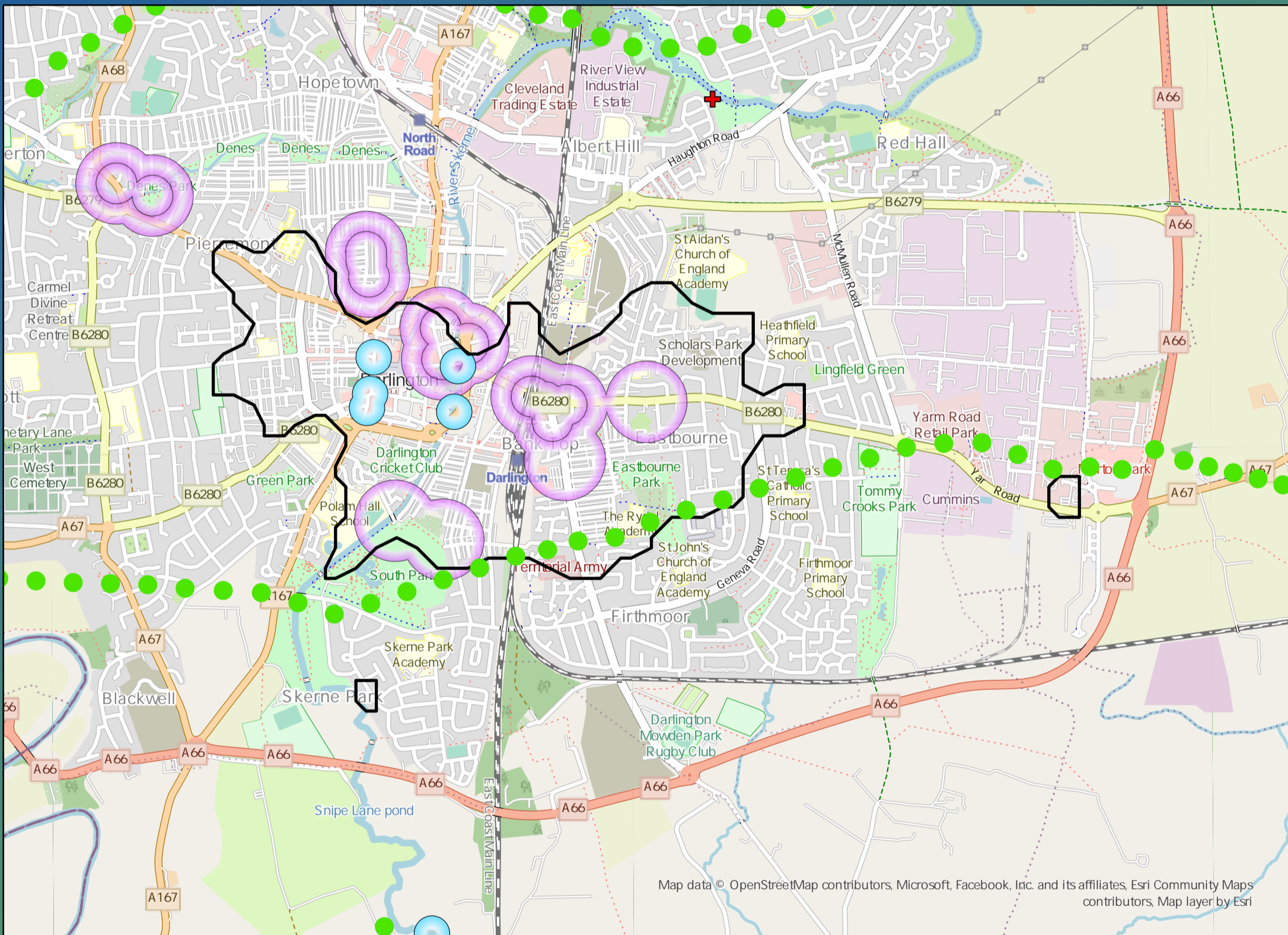
£33,410,000

Benefit

DWMP Drainage Community Summary Stressholme



<p>Properties at Risk of Flooding Internally</p>	2020 56	<p>9</p> <p>Storm overflows spilling to Rivers</p>	<p>0</p> <p>Storm overflows spilling to Bathing Waters</p>	<p>19</p> <p>Manholes at Risk of Pollution</p>	<p>Number of spills to the Environment</p>	2020 51
	2045 111	<p>No</p> <p>Site of Special Scientific Interest</p>	<p>No</p> <p>Strategic Area of Conservation</p>	<p>Yes</p> <p>Strategic Area for Ecology</p>		2045 51
	Post Investment 0				Post Investment 90	



Opportunities

- 3rd Party Stakeholder
- WINEP Programme
- Storm Overflow Programme
- Blue Green Corridor
- Storm Overflow Removal
- Drainage Communities

This is drainage community reference DC_06 which is within the Stressholme area.

The drainage community is classified as high priority based upon it containing a river water asset discharging to an environmentally sensitive area.

The DWMP recommends that no investment is required due to the performance of the storm overflow and level of internal property flood risk in the catchment. The catchment will be monitored for future change.

The application of growth has shown that investment is required at the sewage treatment work before 2045.

£4,470,000

Cost

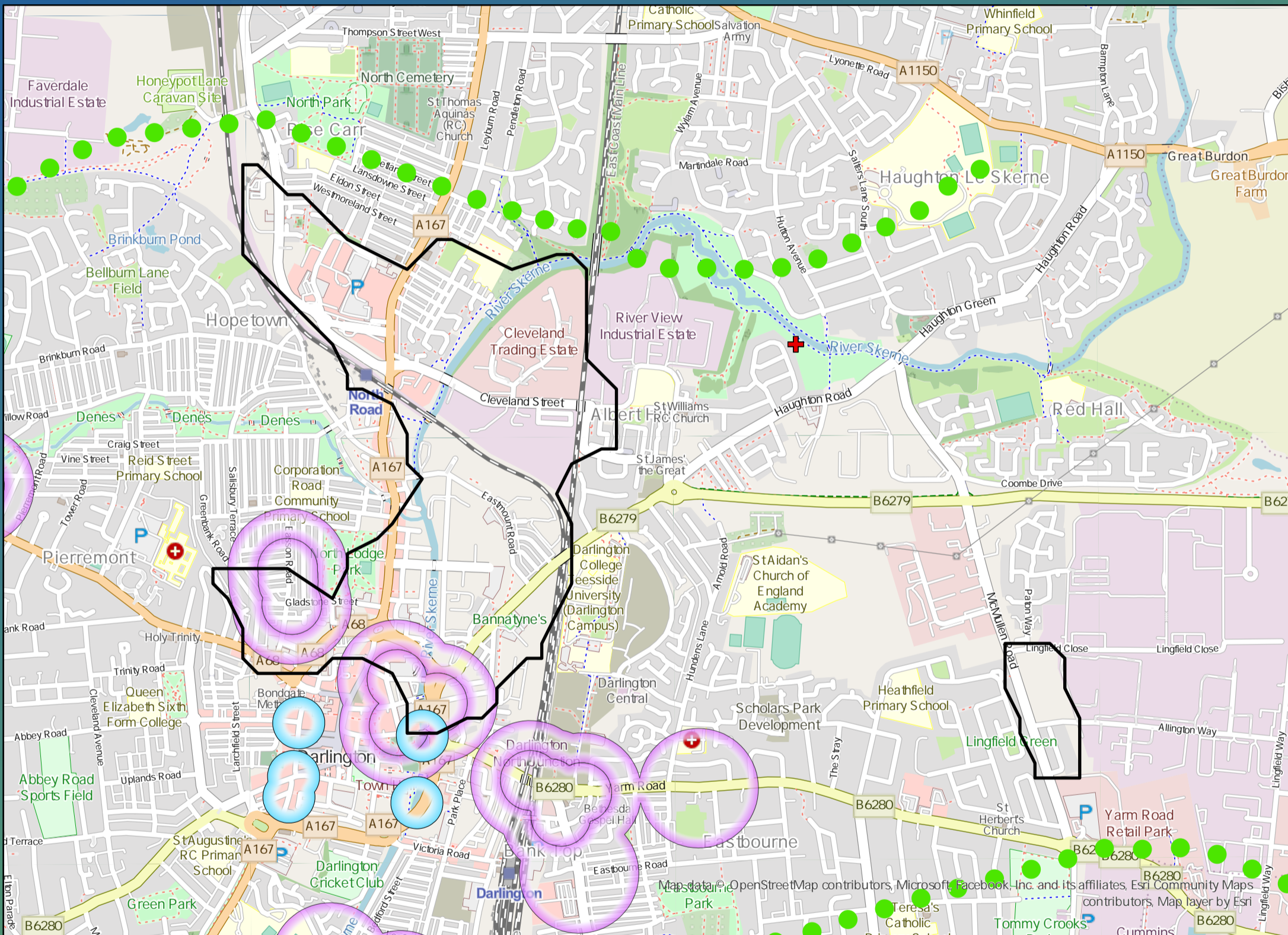
£12,540,000

Benefit

DWMP Drainage Community Summary Stressholme



<p>Properties at Risk of Flooding Internally</p>	2020 59	<p>1</p> <p>Storm overflows spilling to Rivers</p>	<p>0</p> <p>Storm overflows spilling to Bathing Waters</p>	<p>9</p> <p>Manholes at Risk of Pollution</p>	<p>Number of spills to the Environment</p>
	2045 72	<p>No</p> <p>Site of Special Scientific Interest</p>	<p>No</p> <p>Strategic Area of Conservation</p>	<p>Yes</p> <p>Strategic Area for Ecology</p>	
Post Investment 0					



Opportunities

- 3rd Party Stakeholder
- WINEP Programme
- Storm Overflow Programme
- Blue Green Corridor
- Storm Overflow Removal
- Drainage Communities

This is drainage community reference DC_07 which is within the Stressholme area.

The drainage community is classified as low priority based upon it containing a river water asset discharging to an area without environmental concerns.

The DWMP recommends that storage at the storm overflow(s) and storage in the catchment is created to manage and improve spill and flooding performance.

The application of growth has shown that investment is required at the sewage treatment work before 2045.

£6,480,000

Cost

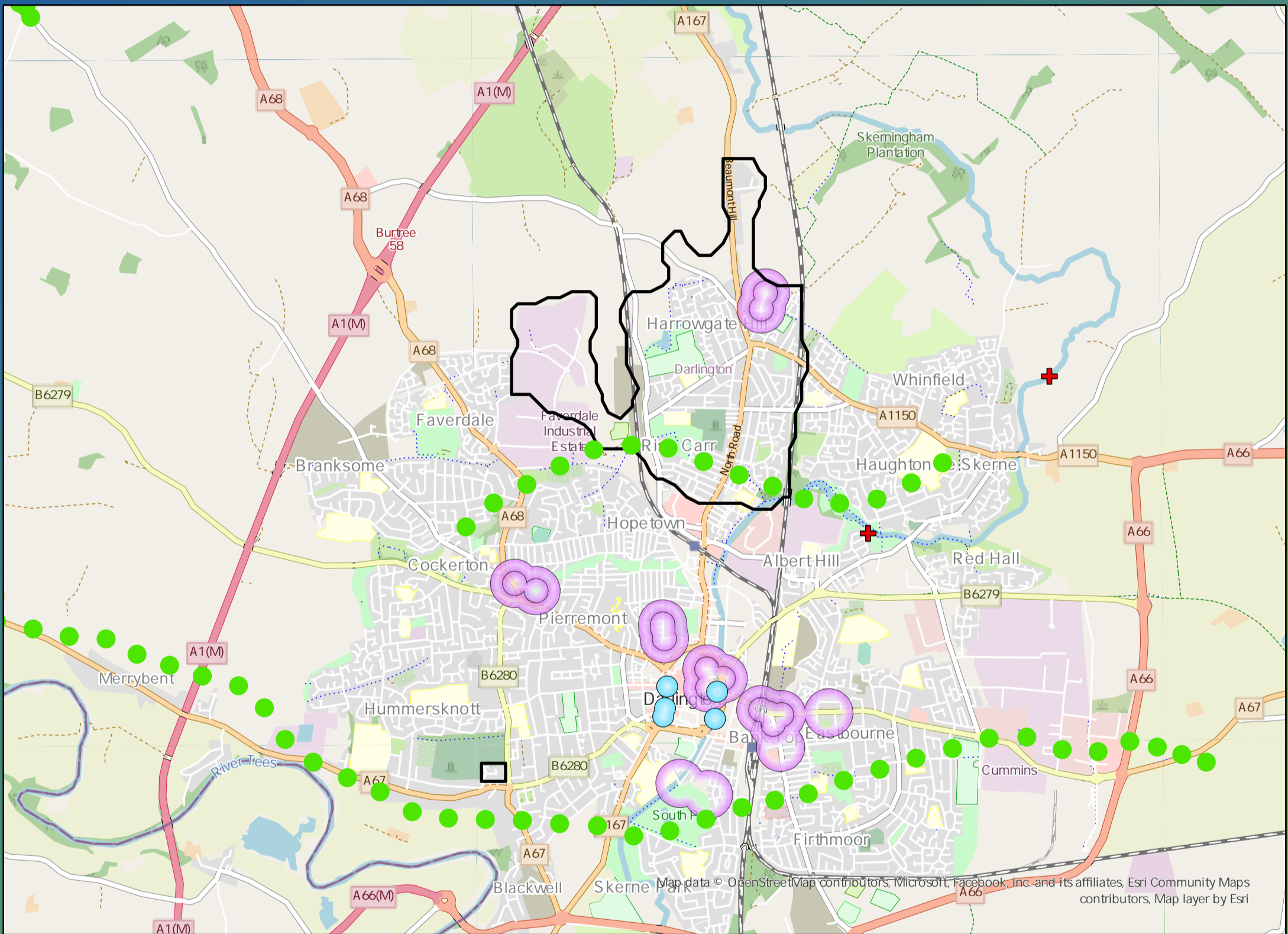
£1,380,000

Benefit

DWMP Drainage Community Summary Stressholme



<p>Properties at Risk of Flooding Internally</p>	2020 137	<p>1</p> <p>Storm overflows spilling to Rivers</p>	<p>0</p> <p>Storm overflows spilling to Bathing Waters</p>	<p>2</p> <p>Manholes at Risk of Pollution</p>	<p>Number of spills to the Environment</p>
	2045 202	<p>No</p> <p>Site of Special Scientific Interest</p>	<p>No</p> <p>Strategic Area of Conservation</p>	<p>No</p> <p>Strategic Area for Ecology</p>	
	Post Investment 0				2045 356
					Post Investment 10



Opportunities

- 3rd Party Stakeholder
- WINEP Programme
- Storm Overflow Programme
- Blue Green Corridor
- Storm Overflow Removal
- Drainage Communities

This is drainage community reference DC_08 which is within the Stressholme area.

The drainage community is classified as low priority based upon it containing a river water asset discharging to an area without environmental concerns.

The DWMP recommends that storage at the storm overflow(s) and storage in the catchment is created to manage and improve spill and flooding performance.

The application of growth has shown that investment is required at the sewage treatment work before 2045.

£3,970,000

Cost

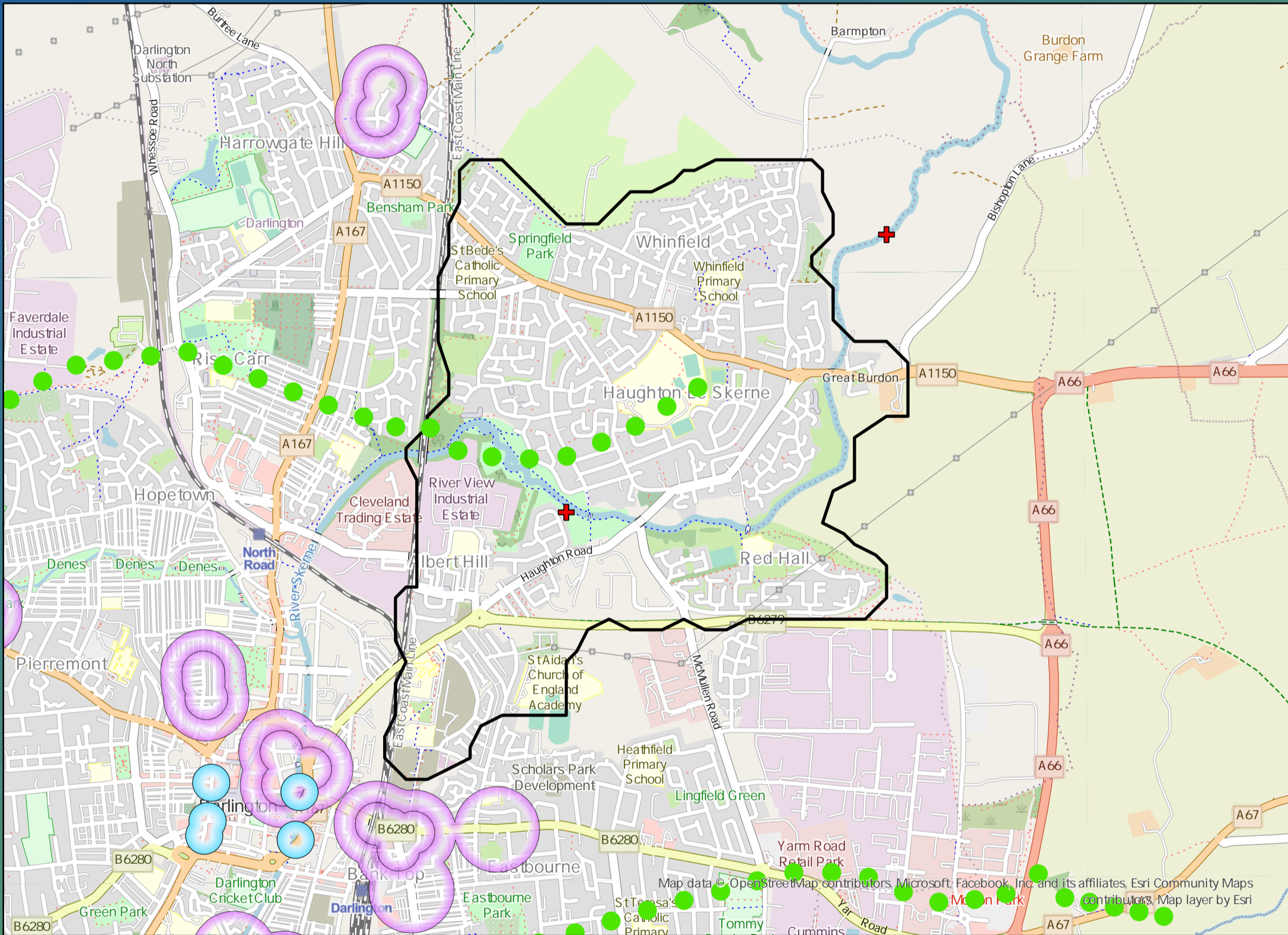
£51,120,000

Benefit

DWMP Drainage Community Summary Stressholme



<p>Properties at Risk of Flooding Internally</p>	2020 152	<p>0</p>	<p>0</p>	<p>0</p>	<p>Number of spills to the Environment</p>	2020 0
	2045 0	<p>Storm overflows spilling to Rivers</p>	<p>Storm overflows spilling to Bathing Waters</p>	<p>Manholes at Risk of Pollution</p>		2045 0
<p>Post Investment 0</p>	<p>No</p>	<p>No</p>	<p>No</p>	<p>No</p>	<p>Post Investment 0</p>	
<p>0</p>	<p>Site of Special Scientific Interest</p>	<p>Strategic Area of Conservation</p>	<p>Strategic Area for Ecology</p>	<p>0</p>	<p>0</p>	



Opportunities

- 3rd Party Stakeholder
- WINEP Programme
- Storm Overflow Programme
- Blue Green Corridor
- Storm Overflow Removal
- Drainage Communities

This is drainage community reference DC_09 which is within the Stressholme area.
 The drainage community is classified as low priority based upon it containing a river water asset discharging to an area without environmental concerns.
 The DWMP recommends that storage at the storm overflow(s) and storage in the catchment is created to manage and improve spill and flooding performance.
 The application of growth has shown that investment is required at the sewage treatment work before 2045.

£4,190,000

Cost

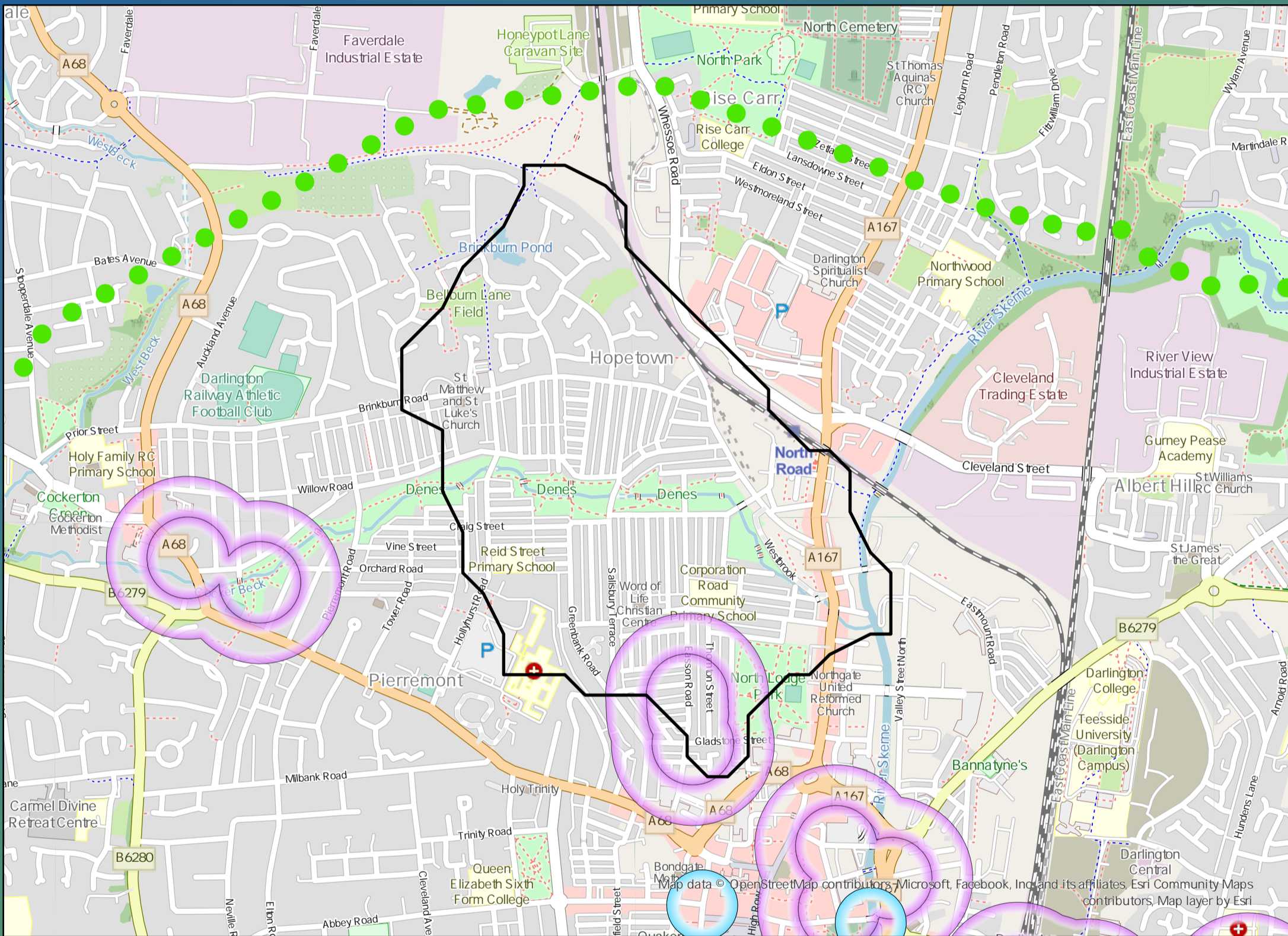
£4,370,000

Benefit

DWMP Drainage Community Summary Stressholme



<p>Properties at Risk of Flooding Internally</p>	2020 39	<p>2</p> <p>Storm overflows spilling to Rivers</p>	<p>0</p> <p>Storm overflows spilling to Bathing Waters</p>	<p>3</p> <p>Manholes at Risk of Pollution</p>	<p>Number of spills to the Environment</p>
	2045 68	<p>No</p> <p>Site of Special Scientific Interest</p>	<p>No</p> <p>Strategic Area of Conservation</p>	<p>Yes</p> <p>Strategic Area for Ecology</p>	
	Post Investment 0				



Opportunities

- 3rd Party Stakeholder
- WINEP Programme
- Storm Overflow Programme
- Blue Green Corridor
- Storm Overflow Removal
- Drainage Communities

This is drainage community reference DC_10 which is within the Stressholme area.
 The drainage community is classified as low priority based upon it containing a river water asset discharging to an area without environmental concerns.
 The DWMP recommends that storage at the storm overflow(s) and storage in the catchment is created to manage and improve spill and flooding performance.
 The application of growth has shown that investment is required at the sewage treatment work before 2045.

£16,110,000

Cost

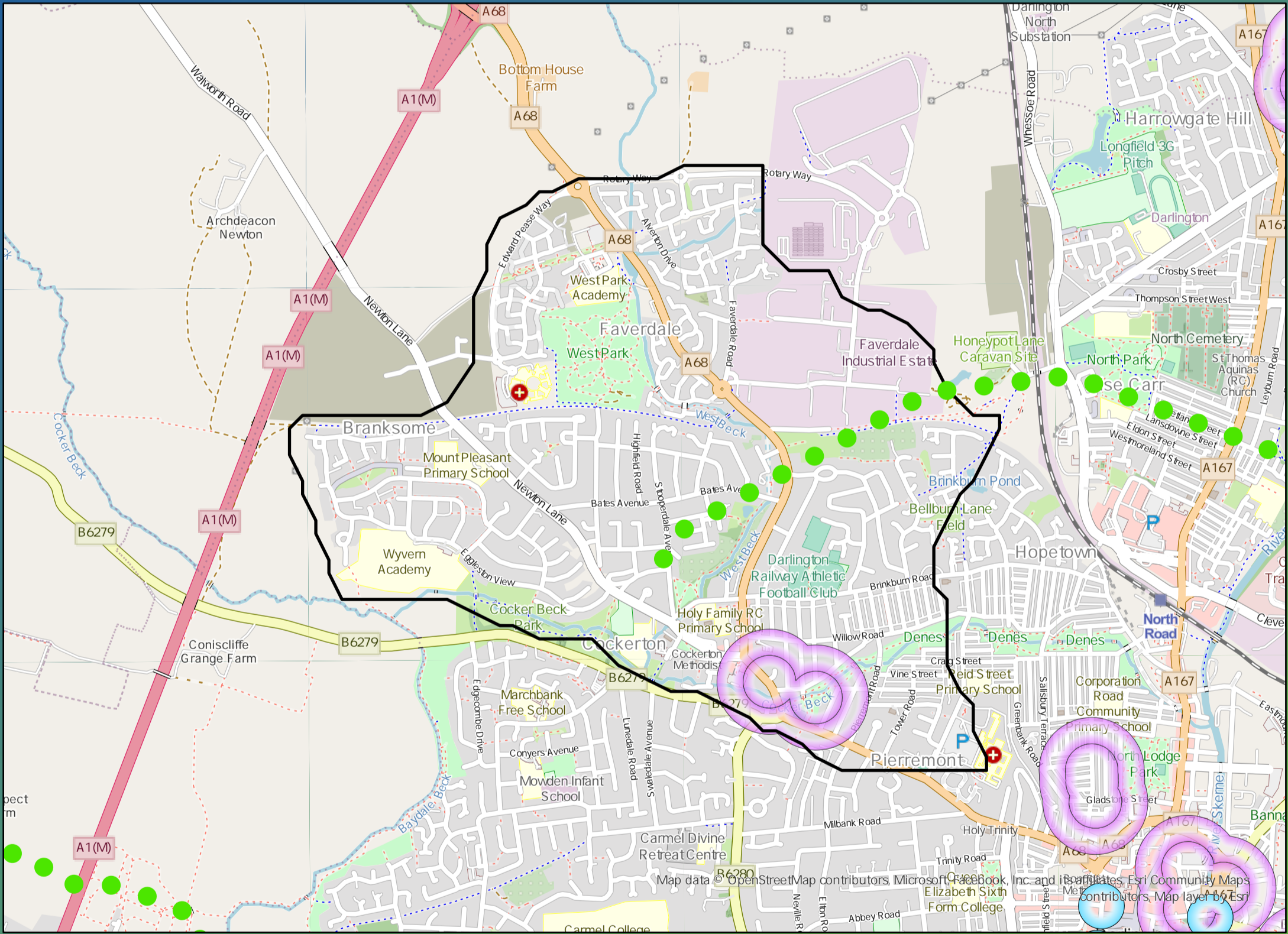
£1,210,000

Benefit

DWMP Drainage Community Summary Stressholme



<p>Properties at Risk of Flooding Internally</p>	2020 79	<p>1</p> <p>Storm overflows spilling to Rivers</p>	<p>0</p> <p>Storm overflows spilling to Bathing Waters</p>	<p>0</p> <p>Manholes at Risk of Pollution</p>	<p>Number of spills to the Environment</p>
	2045 138	<p>No</p> <p>Site of Special Scientific Interest</p>	<p>No</p> <p>Strategic Area of Conservation</p>	<p>No</p> <p>Strategic Area for Ecology</p>	
	Post Investment 0				



Opportunities

- 3rd Party Stakeholder
- WINEP Programme
- Storm Overflow Programme
- Blue Green Corridor
- Storm Overflow Removal
- Drainage Communities

This is drainage community reference DC_11 which is within the Stressholme area. The drainage community is classified as low priority based upon it containing a river water asset discharging to an area without environmental concerns. The DWMP recommends that storage at the storm overflow(s) and storage in the catchment is created to manage and improve spill and flooding performance. The application of growth has shown that investment is required at the sewage treatment work before 2045.

£4,110,000

Cost

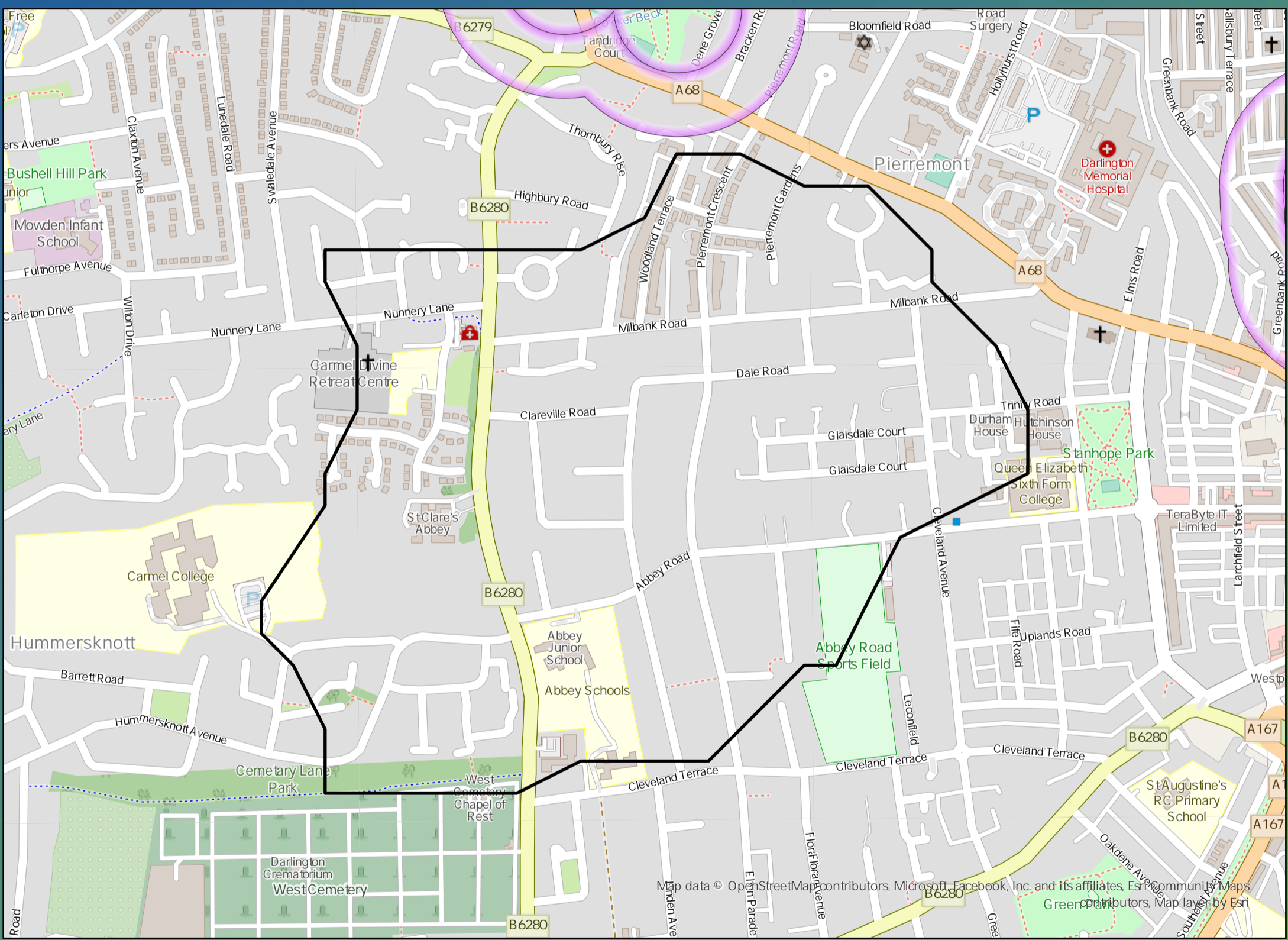
£37,130,000

Benefit

DWMP Drainage Community Summary Stressholme



<p>Properties at Risk of Flooding Internally</p>	2020 61	<p>Storm overflows spilling to Rivers</p>	<p>Storm overflows spilling to Bathing Waters</p>	<p>Manholes at Risk of Pollution</p>	<p>Number of spills to the Environment</p>
	2045 0	<p>Site of Special Scientific Interest</p>	<p>Strategic Area of Conservation</p>	<p>Strategic Area for Ecology</p>	
Post Investment 0	0	No	No	No	Post Investment 0



Opportunities

- 3rd Party Stakeholder
- WINEP Programme
- Storm Overflow Programme
- Blue Green Corridor
- Storm Overflow Removal
- Drainage Communities

This is drainage community reference DC_12 which is within the Stressholme area.

The drainage community is classified as low priority based upon it containing a river water asset discharging to an area without environmental concerns.

The DWMP recommends that storage at the storm overflow(s) and storage in the catchment is created to manage and improve spill and flooding performance.

The application of growth has shown that investment is required at the sewage treatment work before 2045.

£1,560,000

Cost

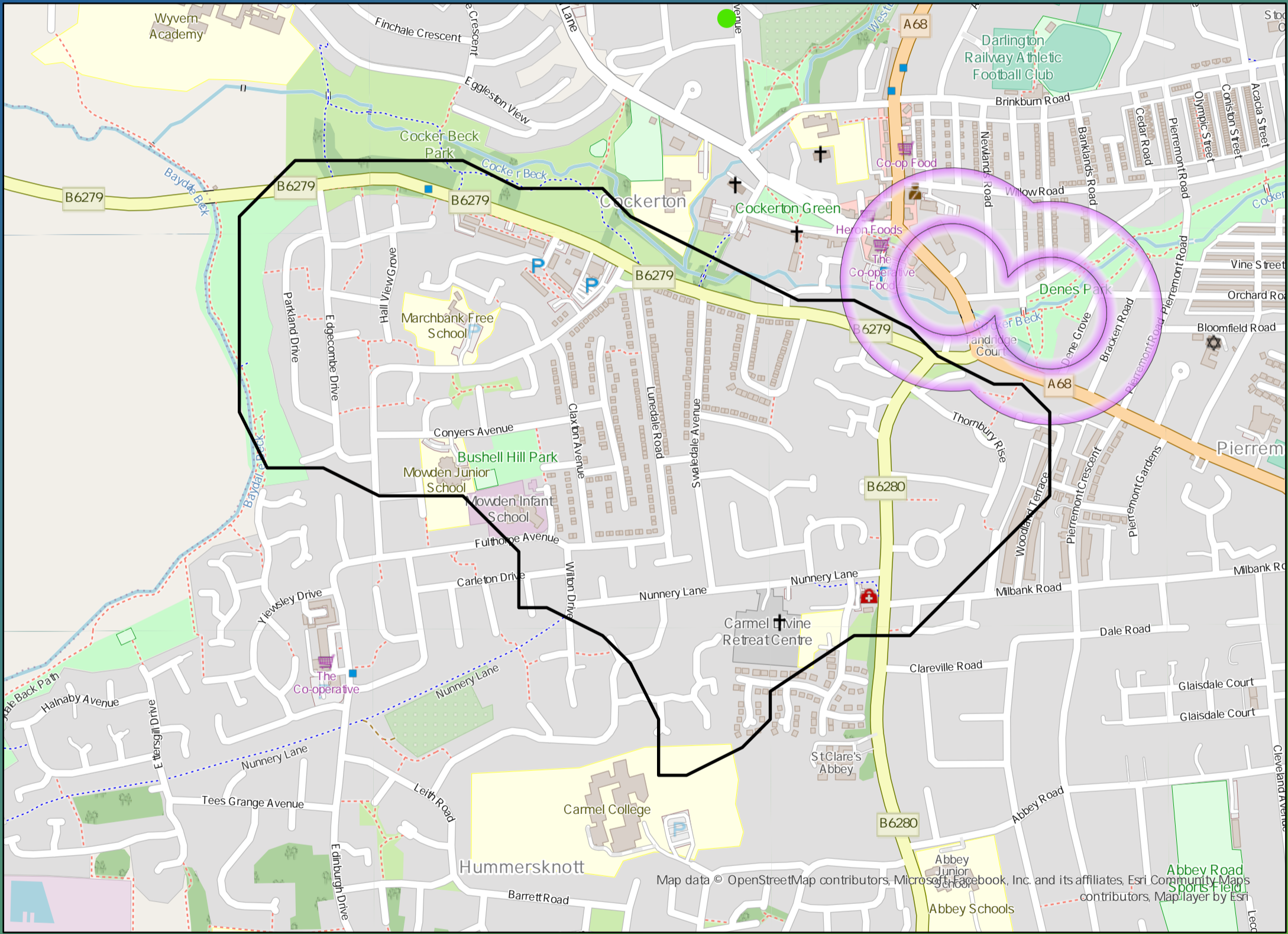
£1,710,000

Benefit

DWMP Drainage Community Summary Stressholme



<p>Properties at Risk of Flooding Internally</p>	2020 38	<p>0</p>	<p>0</p>	<p>0</p>	<p>Number of spills to the Environment</p>	2020 0
	2045 0	<p>No</p>	<p>No</p>	<p>No</p>		2045 0
<p>Post Investment 0</p>	<p>Site of Special Scientific Interest No</p>	<p>Storm overflows spilling to Rivers</p>	<p>Storm overflows spilling to Bathing Waters</p>	<p>Manholes at Risk of Pollution</p>	<p>Strategic Area for Ecology No</p>	<p>Post Investment 0</p>



Opportunities

- 3rd Party Stakeholder
- WINEP Programme
- Storm Overflow Programme
- Blue Green Corridor
- Storm Overflow Removal
- Drainage Communities

This is drainage community reference DC_13 which is within the Stressholme area.
 The drainage community is classified as low priority based upon it containing a river water asset discharging to an area without environmental concerns.
 The DWMP recommends that storage at the storm overflow(s) and storage in the catchment is created to manage and improve spill and flooding performance.
 The application of growth has shown that investment is required at the sewage treatment work before 2045.

£1,180,000

Cost

£1,020,000

Benefit