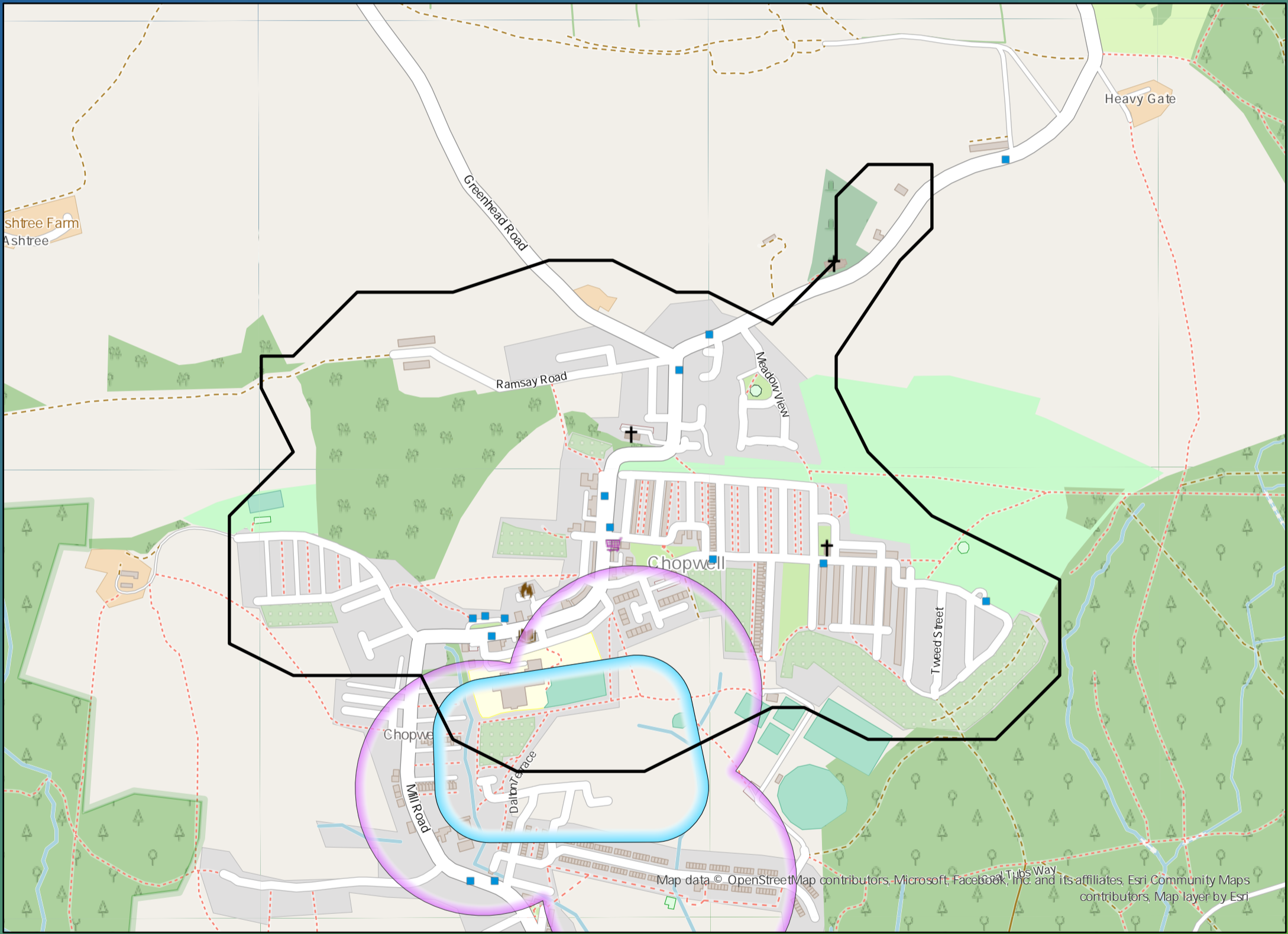


# DWMP Drainage Community Summary Consett



<p>Properties at Risk of Flooding Internally</p>	2020 <b>4</b>	<p>Storm overflows spilling to Rivers</p>	2 <b>2</b>	<p>Storm overflows spilling to Bathing Waters</p>	0 <b>0</b>	<p>Manholes at Risk of Pollution</p>	0 <b>0</b>	<p>Number of spills to the Environment</p>	2020 <b>0</b>
	2045 <b>13</b>	<p>Site of Special Scientific Interest</p>	No <b>No</b>	<p>Strategic Area of Conservation</p>	No <b>No</b>	<p>Strategic Area for Ecology</p>	No <b>No</b>		2045 <b>0</b>



## Opportunities

- 3rd Party Stakeholder
- WINEP Programme
- Storm Overflow Programme
- Blue Green Corridor
- Storm Overflow Removal
- Drainage Communities

This is drainage community reference DC\_01 which is within the Consett area.

The drainage community is classified as low priority based upon it containing a river water asset discharging to an area without environmental concerns.

The DWMP recommends that storage at the storm overflow(s) and storage in the catchment is created to manage and improve spill and flooding performance.

The application of growth in the catchment has shown that no investment is required at the sewage treatment works.

**£820,000**

Cost

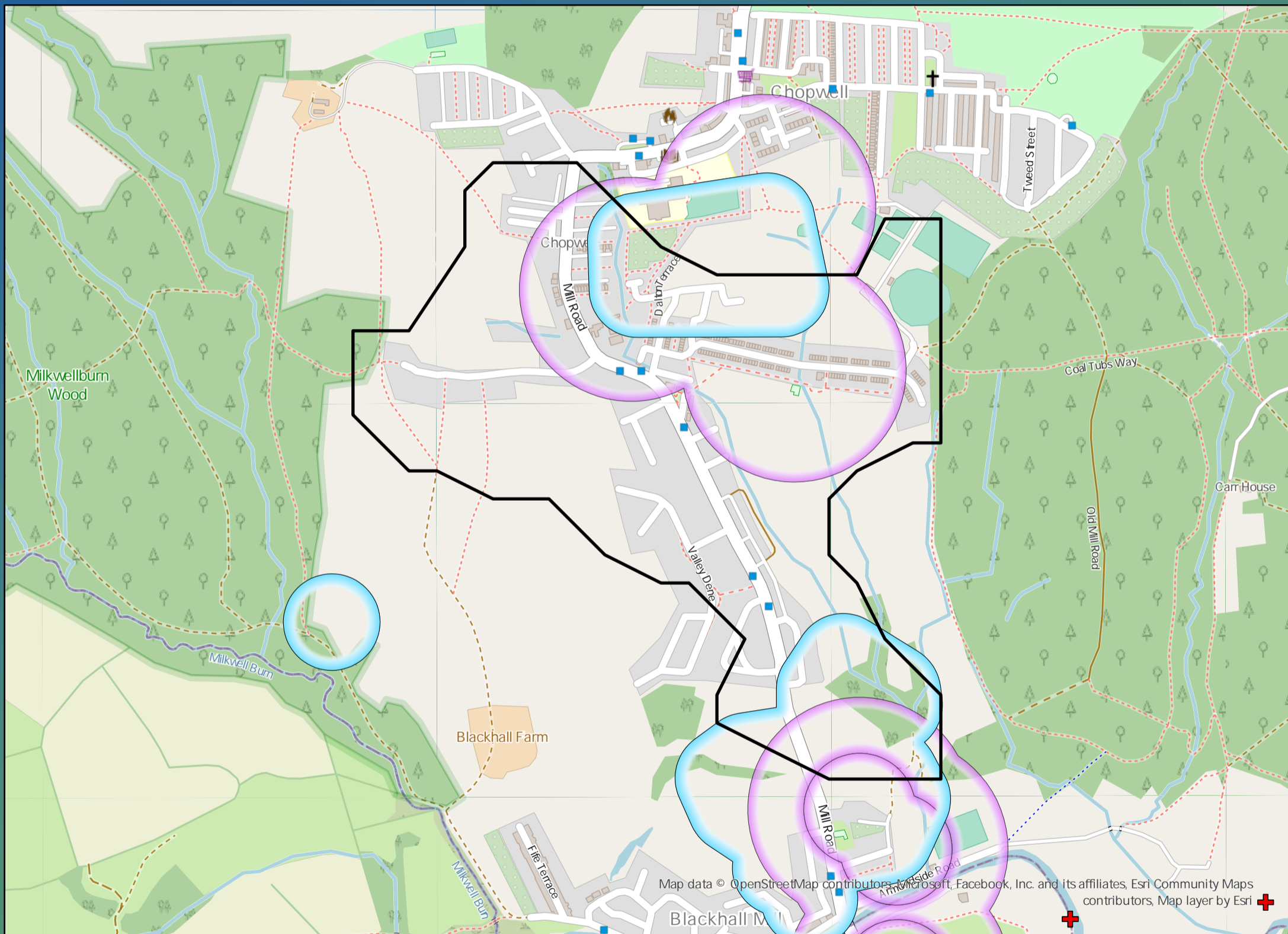
**£220,000**

Benefit

# DWMP Drainage Community Summary Consett



<p>Properties at Risk of Flooding Internally</p>	2020 <b>6</b>	<p>Storm overflows spilling to Rivers</p>	2 <b>2</b>	<p>Storm overflows spilling to Bathing Waters</p>	0 <b>0</b>	<p>Manholes at Risk of Pollution</p>	0 <b>0</b>	<p>Number of spills to the Environment</p>	2020 <b>1</b>
	2045 <b>7</b>	<p>Site of Special Scientific Interest</p>	No <b>No</b>	<p>Strategic Area of Conservation</p>	No <b>No</b>	<p>Strategic Area for Ecology</p>	No <b>No</b>		2045 <b>1</b>
	Post Investment <b>0</b>								Post Investment <b>2</b>



## Opportunities

- 3rd Party Stakeholder
- WINEP Programme
- Storm Overflow Programme
- Blue Green Corridor
- Storm Overflow Removal
- Drainage Communities

This is drainage community reference DC\_02 which is within the Consett area.  
 The drainage community is classified as low priority based upon it containing a river water asset discharging to an area without environmental concerns.  
 The DWMP recommends that storage at the storm overflow(s) and storage in the catchment is created to manage and improve spill and flooding performance.  
 The application of growth in the catchment has shown that no investment is required at the sewage treatment works.



Cost

**£800,000**



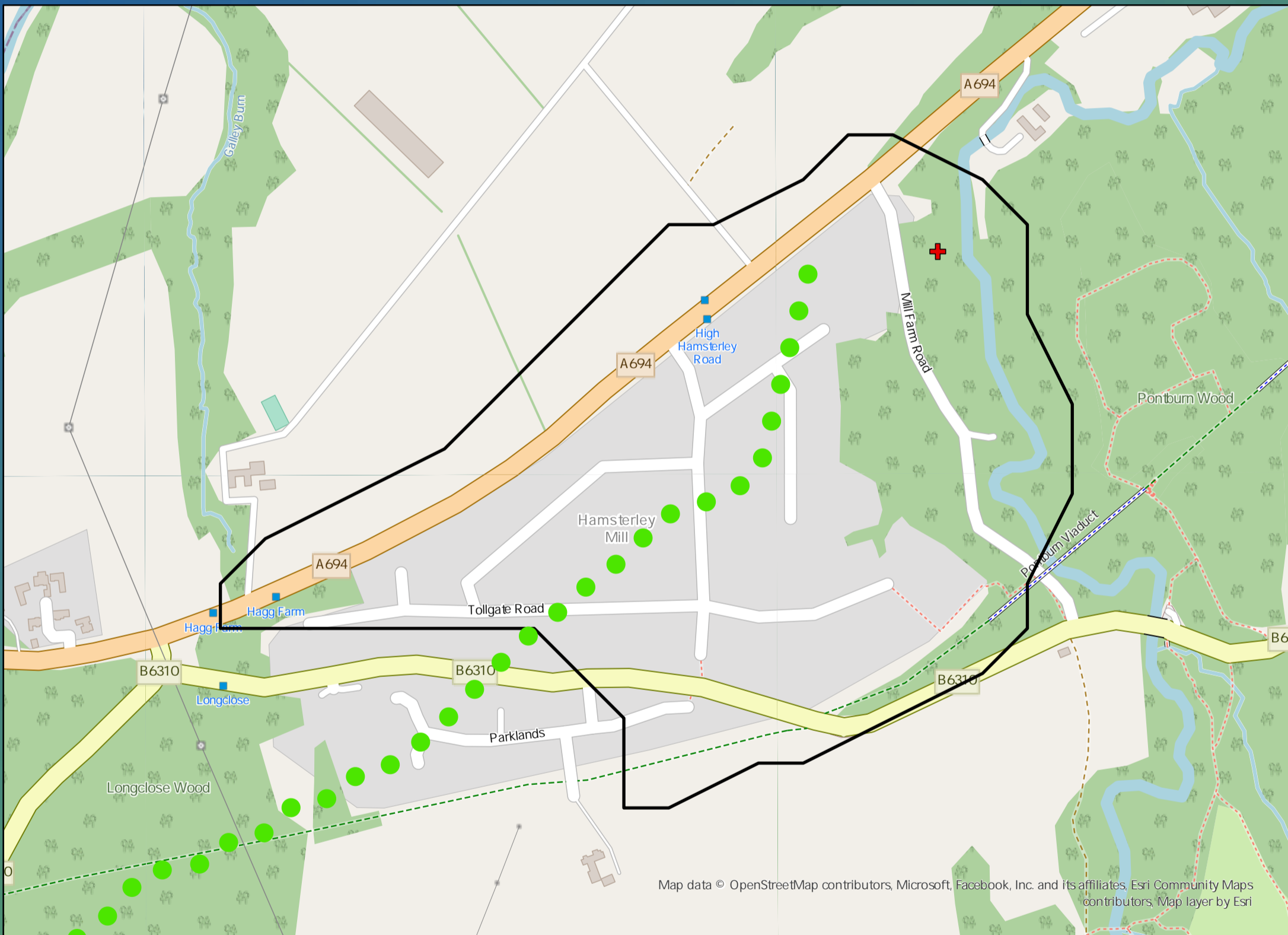
Benefit

**£260,000**

# DWMP Drainage Community Summary Consett



<p>Properties at Risk of Flooding Internally</p>	2020 <b>2</b>	<p>Storm overflows spilling to Rivers</p>	<p>Storm overflows spilling to Bathing Waters</p>	<p>Manholes at Risk of Pollution</p>	<p>Number of spills to the Environment</p>
	2045 <b>0</b>	<p>Site of Special Scientific Interest</p>	<p>Strategic Area of Conservation</p>	<p>Strategic Area for Ecology</p>	
Post Investment <b>0</b>	<b>No</b>	<b>No</b>	<b>Yes</b>	Post Investment <b>0</b>	



## Opportunities

- 3rd Party Stakeholder
- WINEP Programme
- Storm Overflow Programme
- Blue Green Corridor
- Storm Overflow Removal
- Drainage Communities

This is drainage community reference DC\_03 which is within the Consett area.

The drainage community is classified as high priority based upon it containing a RNAG asset discharging to an environmentally sensitive area.

The DWMP recommends that no investment is required due to the performance of the storm overflow and level of internal property flood risk in the catchment. The catchment will be monitored for future change.

The application of growth in the catchment has shown that no investment is required at the sewage treatment works.



**£5,470,000**

Cost



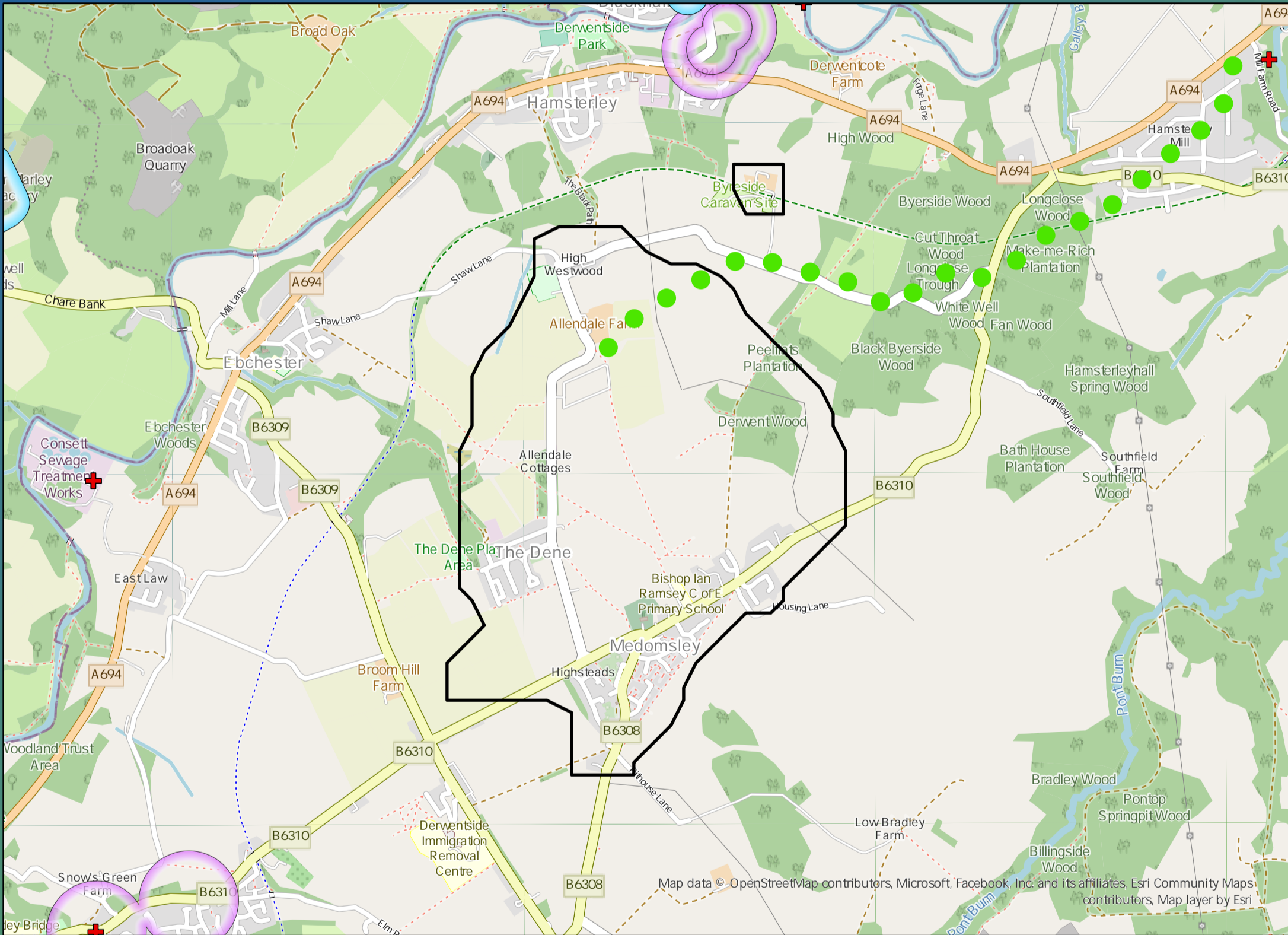
**£11,530,000**

Benefit

# DWMP Drainage Community Summary Consett



<p>Properties at Risk of Flooding Internally</p>	2020 <b>22</b>	<p>Storm overflows spilling to Rivers</p>	<p>Storm overflows spilling to Bathing Waters</p>	<p>Manholes at Risk of Pollution</p>	<p>Number of spills to the Environment</p>
	2045 <b>0</b>	<p>Site of Special Scientific Interest</p>	<p>Strategic Area of Conservation</p>	<p>Strategic Area for Ecology</p>	



## Opportunities

- 3rd Party Stakeholder
- WINEP Programme
- Storm Overflow Programme
- Blue Green Corridor
- Storm Overflow Removal
- Drainage Communities

This is drainage community reference DC\_04 which is within the Consett area.  
 The drainage community is classified as low priority based upon it containing a river water asset discharging to an area without environmental concerns.  
 The DWMP recommends that storage at the storm overflow(s) and storage in the catchment is created to manage and improve spill and flooding performance.  
 The application of growth in the catchment has shown that no investment is required at the sewage treatment works.

**£1,060,000**

Cost

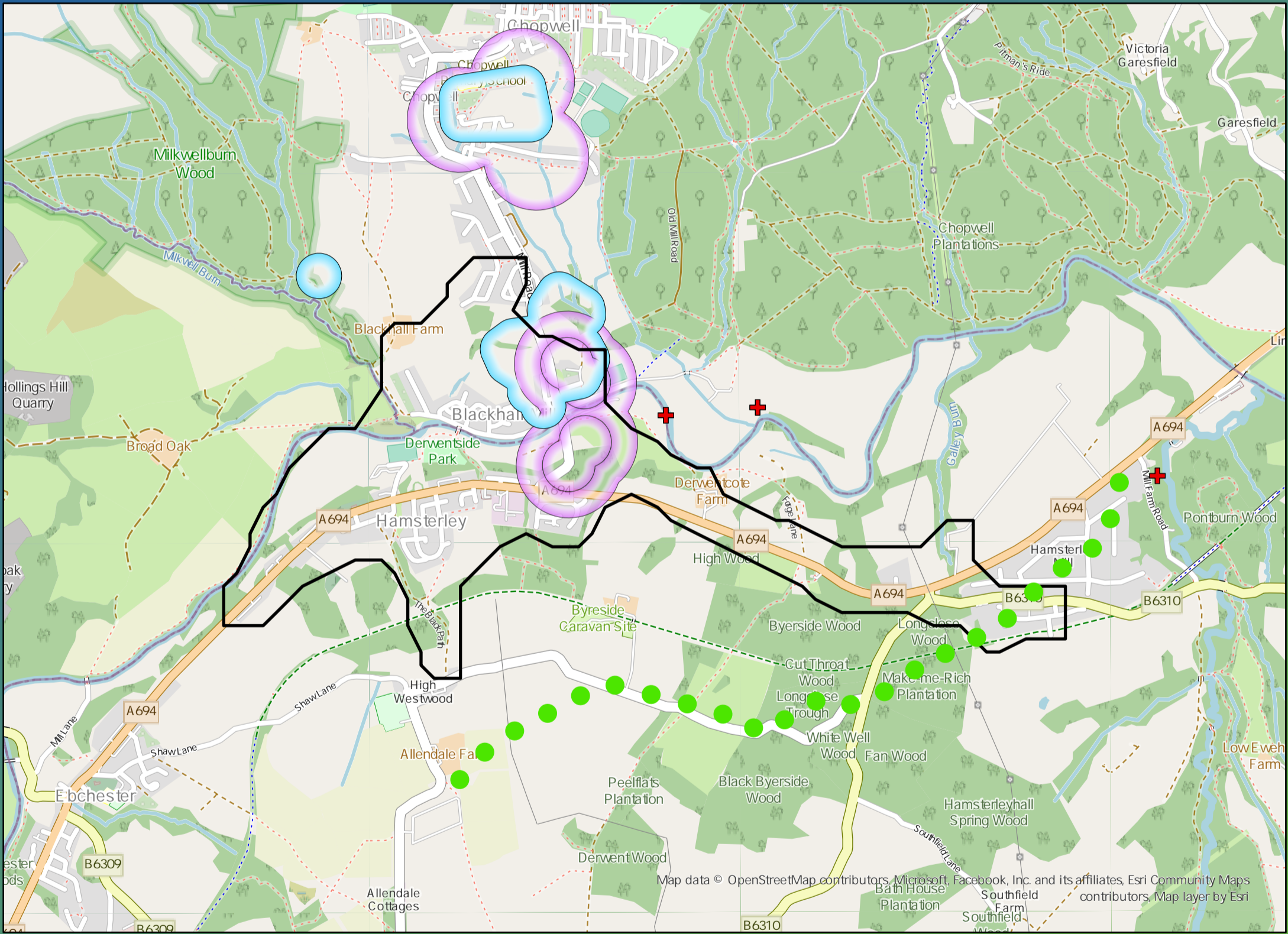
**£650,000**

Benefit

# DWMP Drainage Community Summary Consett



<p>Properties at Risk of Flooding Internally</p>	2020 <b>21</b>	<p>5</p> <p>Storm overflows spilling to Rivers</p>	<p>0</p> <p>Storm overflows spilling to Bathing Waters</p>	<p>8</p> <p>Manholes at Risk of Pollution</p>	<p>Number of spills to the Environment</p>
	2045 <b>32</b> Post Investment <b>0</b>	<p>No</p> <p>Site of Special Scientific Interest</p>	<p>No</p> <p>Strategic Area of Conservation</p>	<p>Yes</p> <p>Strategic Area for Ecology</p>	



## Opportunities

- 3rd Party Stakeholder
- WINEP Programme
- Storm Overflow Programme
- Blue Green Corridor
- Storm Overflow Removal
- Drainage Communities

This is drainage community reference DC\_05 which is within the Consett area.

The drainage community is classified as high priority based upon it containing a river water asset discharging to an environmentally sensitive area.

The DWMP recommends that storage at the storm overflow(s) and storage in the catchment is created to manage and improve spill and flooding performance.

The application of growth in the catchment has shown that no investment is required at the sewage treatment works.

**£4,170,000**

Cost

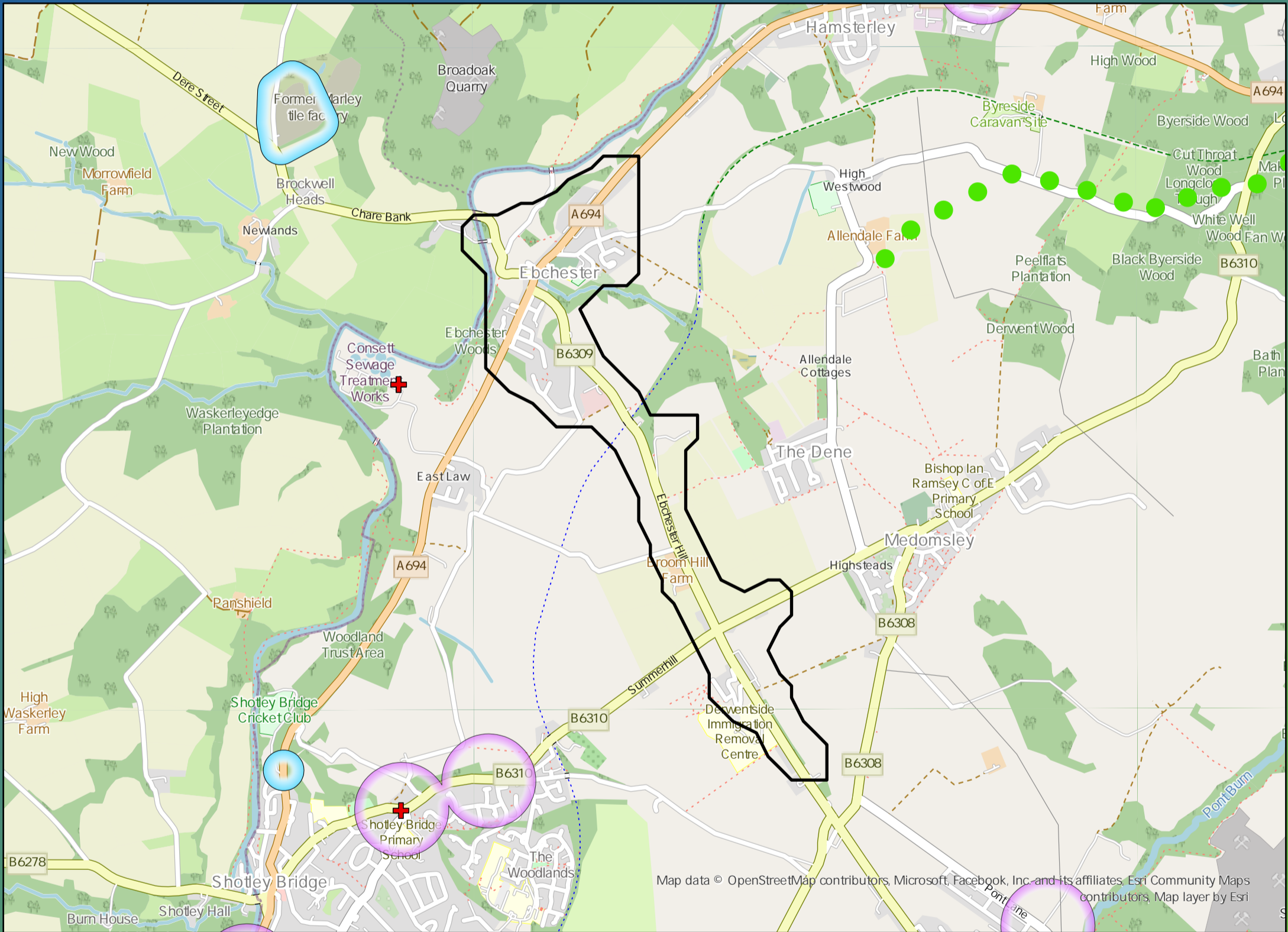
**£12,190,000**

Benefit

# DWMP Drainage Community Summary Consett



<p>Properties at Risk of Flooding Internally</p>	2020 <b>46</b>	<p>3</p> <p>Storm overflows spilling to Rivers</p>	<p>0</p> <p>Storm overflows spilling to Bathing Waters</p>	<p>5</p> <p>Manholes at Risk of Pollution</p>	<p>Number of spills to the Environment</p>
	2045 <b>63</b>	<p>No</p> <p>Site of Special Scientific Interest</p>	<p>No</p> <p>Strategic Area of Conservation</p>	<p>Yes</p> <p>Strategic Area for Ecology</p>	
	Post Investment <b>0</b>				



## Opportunities

- 3rd Party Stakeholder
- WINEP Programme
- Storm Overflow Programme
- Blue Green Corridor
- Storm Overflow Removal
- Drainage Communities

This is drainage community reference DC\_06 which is within the Consett area.

The drainage community is classified as high priority based upon it containing a river water asset discharging to an environmentally sensitive area.

The DWMP recommends that storage at the storm overflow(s) and storage in the catchment is created to manage and improve spill and flooding performance.

The application of growth in the catchment has shown that no investment is required at the sewage treatment works.

**£4,210,000**

Cost

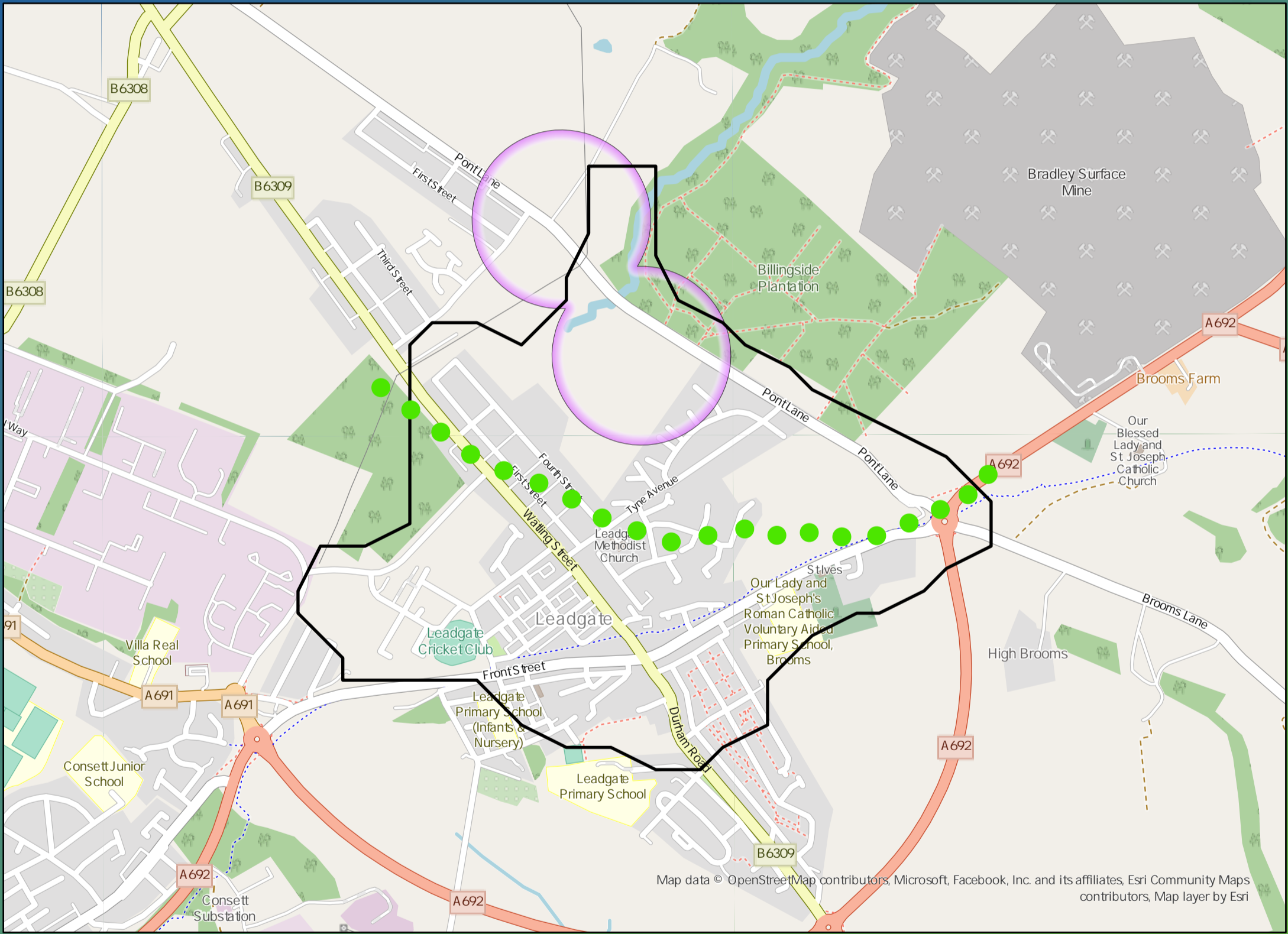
**£25,590,000**

Benefit

# DWMP Drainage Community Summary Consett



<p>Properties at Risk of Flooding Internally</p>	2020 <b>22</b>	<p>2</p> <p>Storm overflows spilling to Rivers</p>	<p>0</p> <p>Storm overflows spilling to Bathing Waters</p>	<p>0</p> <p>Manholes at Risk of Pollution</p>	<p>Number of spills to the Environment</p>
	2045 <b>39</b>	<p>No</p> <p>Site of Special Scientific Interest</p>	<p>No</p> <p>Strategic Area of Conservation</p>	<p>No</p> <p>Strategic Area for Ecology</p>	
	Post Investment <b>0</b>				2020 <b>0</b>
					2045 <b>0</b>
					Post Investment <b>0</b>



Map data © OpenStreetMap contributors, Microsoft, Facebook, Inc. and its affiliates, Esri Community Maps contributors, Map layer by Esri

## Opportunities

- 3rd Party Stakeholder
- WINEP Programme
- Storm Overflow Programme
- Blue Green Corridor
- Storm Overflow Removal
- Drainage Communities

This is drainage community reference DC\_07 which is within the Consett area.  
 The drainage community is classified as low priority based upon it containing a river water asset discharging to an area without environmental concerns.  
 The DWMP recommends that storage at the storm overflow(s) and storage in the catchment is created to manage and improve spill and flooding performance.  
 The application of growth in the catchment has shown that no investment is required at the sewage treatment works.

**£980,000**

Cost

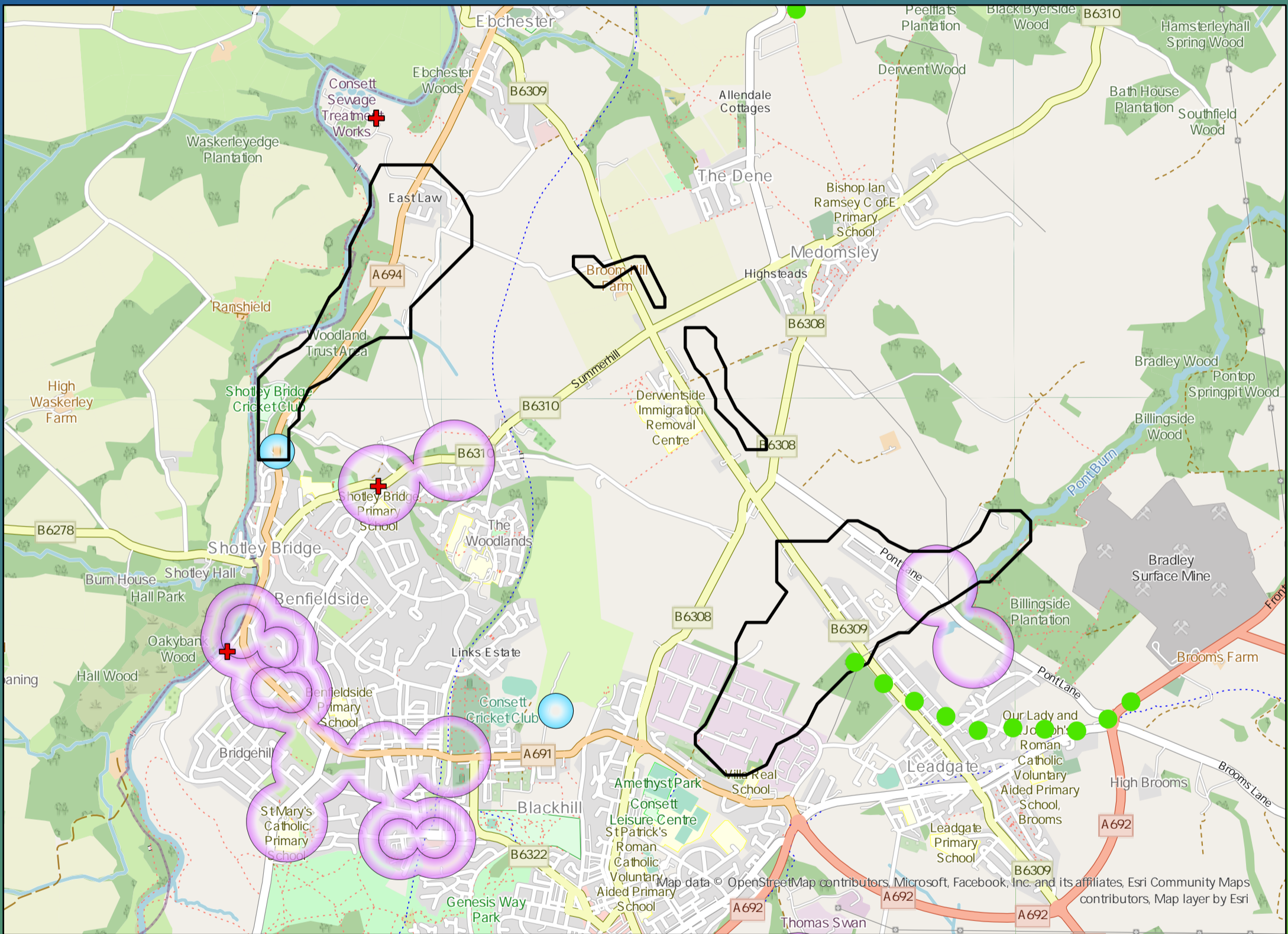
**£700,000**

Benefit

# DWMP Drainage Community Summary Consett



<p>Properties at Risk of Flooding Internally</p>	2020 <b>30</b>	<p>1</p> <p>Storm overflows spilling to Rivers</p>	<p>0</p> <p>Storm overflows spilling to Bathing Waters</p>	<p>1</p> <p>Manholes at Risk of Pollution</p>	<p>Number of spills to the Environment</p>
	2045 <b>34</b> Post Investment <b>0</b>	<p>No</p> <p>Site of Special Scientific Interest</p>	<p>No</p> <p>Strategic Area of Conservation</p>	<p>No</p> <p>Strategic Area for Ecology</p>	



## Opportunities

- 3rd Party Stakeholder
- WINEP Programme
- Storm Overflow Programme
- Blue Green Corridor
- Storm Overflow Removal
- Drainage Communities

This is drainage community reference DC\_08 which is within the Consett area.

The drainage community is classified as low priority based upon it containing a river water asset discharging to an area without environmental concerns.

The DWMP recommends that storage at the storm overflow(s) and storage in the catchment is created to manage and improve spill and flooding performance.

The application of growth in the catchment has shown that no investment is required at the sewage treatment works.



**£970,000**

Cost



**£660,000**

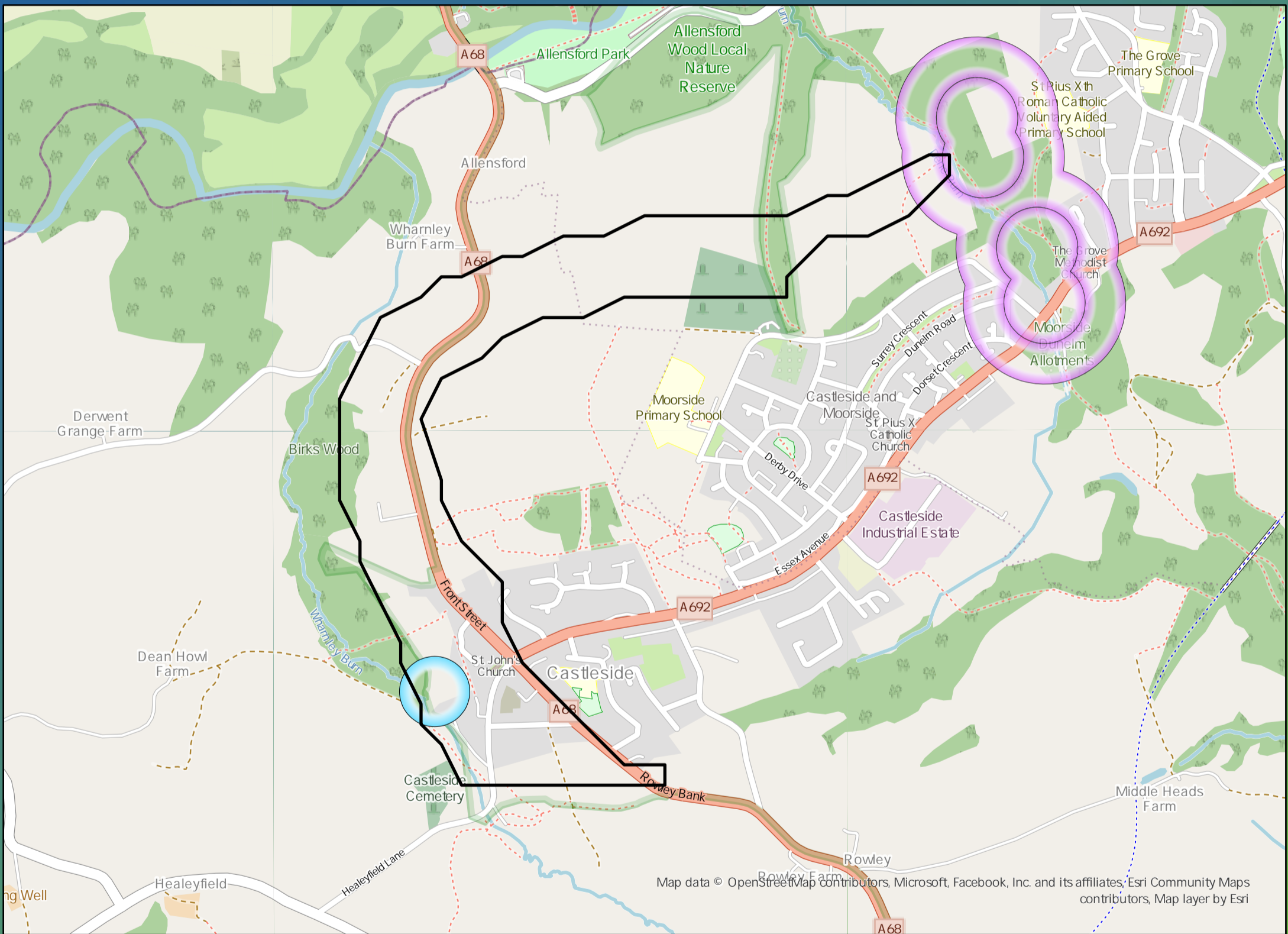
Benefit



# DWMP Drainage Community Summary Consett



<p>Properties at Risk of Flooding Internally</p>	2020 <b>2</b>	<p>Storm overflows spilling to Rivers</p>	<p>Storm overflows spilling to Bathing Waters</p>	<p>Manholes at Risk of Pollution</p>	<p>Number of spills to the Environment</p>
	2045 <b>0</b>	<p>Site of Special Scientific Interest</p>	<p>Strategic Area of Conservation</p>	<p>Strategic Area for Ecology</p>	
	Post Investment <b>0</b>	<b>No</b>	<b>No</b>	<b>No</b>	Post Investment <b>0</b>



## Opportunities

- 3rd Party Stakeholder
- WINEP Programme
- Storm Overflow Programme
- Blue Green Corridor
- Storm Overflow Removal
- Drainage Communities

This is drainage community reference DC\_09 which is within the Consett area.

The drainage community is classified as low priority based upon it containing a river water asset discharging to an area without environmental concerns.

The DWMP recommends that no investment is required due to the performance of the storm overflow and level of internal property flood risk in the catchment. The catchment will be monitored for future change.

The application of growth in the catchment has shown that no investment is required at the sewage treatment works.

**£0**

Cost

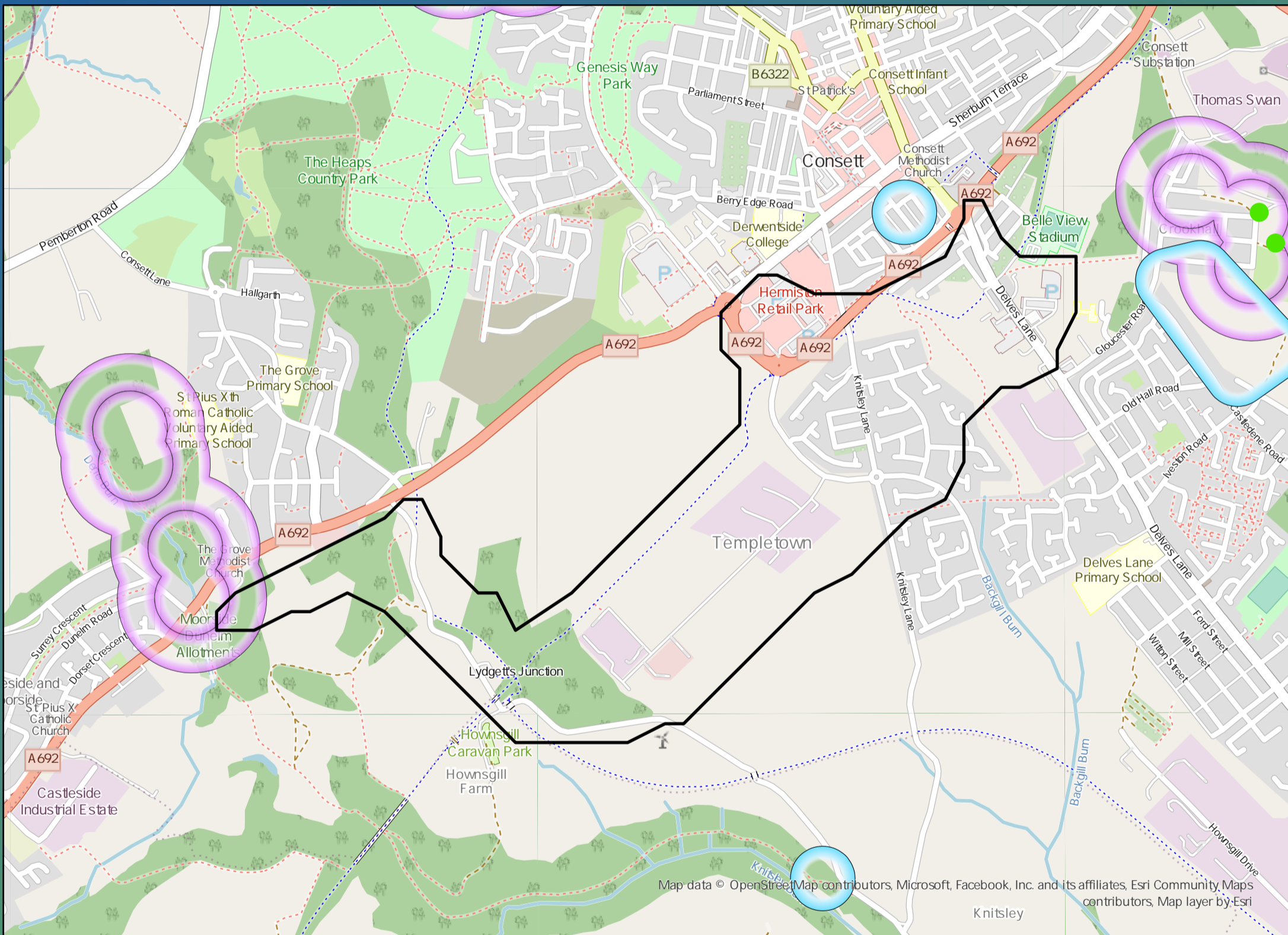
**£0**

Benefit

# DWMP Drainage Community Summary Consett



<p>Properties at Risk of Flooding Internally</p>	2020 0	<p>Storm overflows spilling to Rivers</p>	2020 0	<p>Storm overflows spilling to Bathing Waters</p>	2020 0	<p>Number of spills to the Environment</p>	2020 0
	2045 0		<p>Site of Special Scientific Interest</p>		2045 0		<p>Strategic Area of Conservation</p>
	0		No		No		0
	0		No		No		0
	0		No		No		0



## Opportunities

- 3rd Party Stakeholder
- WINEP Programme
- Storm Overflow Programme
- Blue Green Corridor
- Storm Overflow Removal
- Drainage Communities

This is drainage community reference DC\_10 which is within the Consett area.  
 The drainage community is classified as low priority based upon it containing a river water asset discharging to an area without environmental concerns.  
 The DWMP recommends that no investment is required due to the performance of the storm overflow and level of internal property flood risk in the catchment. The catchment will be monitored for future change.  
 The application of growth in the catchment has shown that no investment is required at the sewage treatment works.

**£0**

Cost

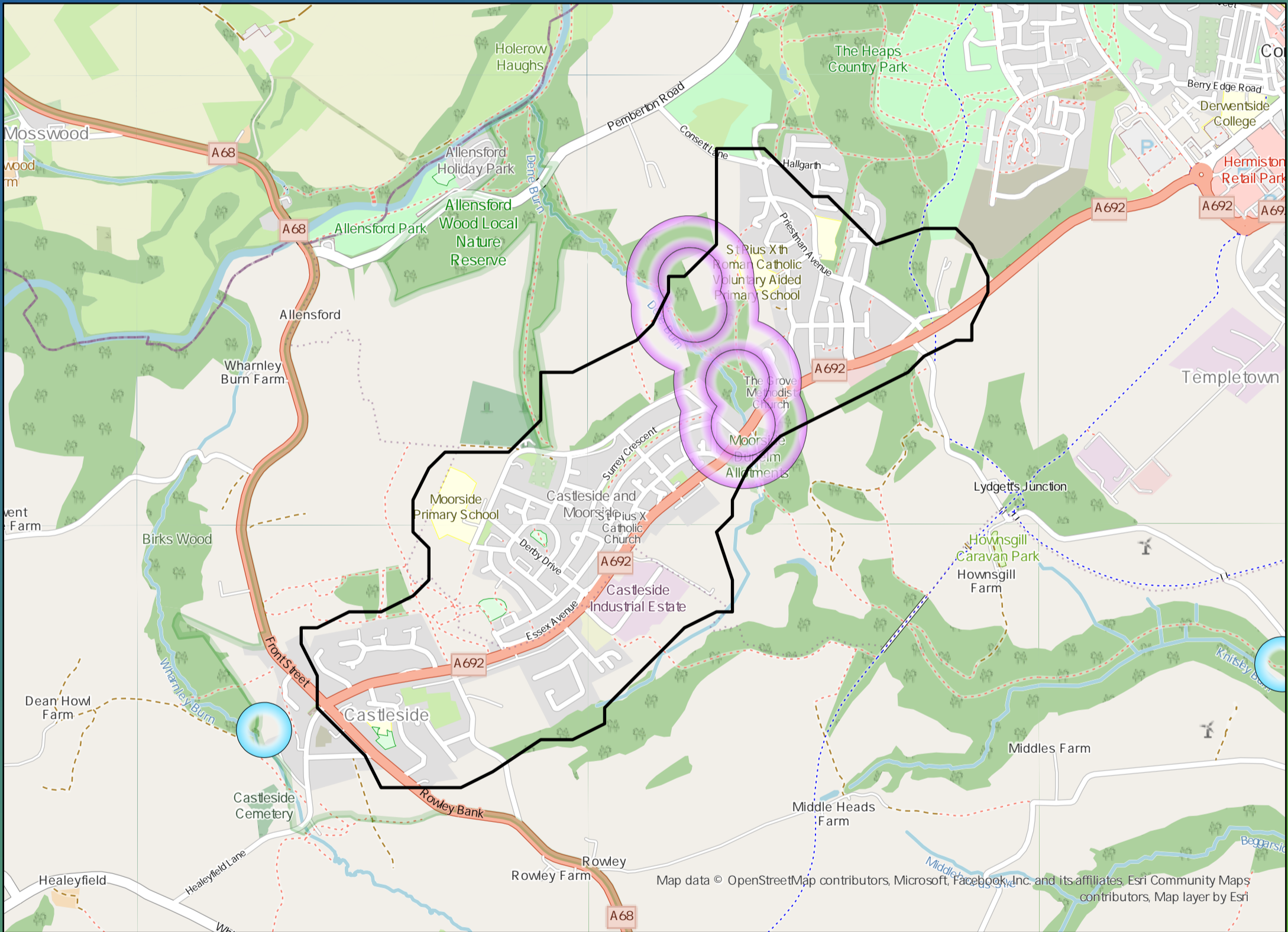
**£0**

Benefit

# DWMP Drainage Community Summary Consett



<p>Properties at Risk of Flooding Internally</p>	2020 <b>11</b>	<p>5</p> <p>Storm overflows spilling to Rivers</p>	<p>0</p> <p>Storm overflows spilling to Bathing Waters</p>	<p>5</p> <p>Manholes at Risk of Pollution</p>	<p>Number of spills to the Environment</p>
	2045 <b>27</b>	<p>No</p> <p>Site of Special Scientific Interest</p>	<p>No</p> <p>Strategic Area of Conservation</p>	<p>No</p> <p>Strategic Area for Ecology</p>	
	Post Investment <b>0</b>				



## Opportunities

- 3rd Party Stakeholder
- WINEP Programme
- Storm Overflow Programme
- Blue Green Corridor
- Storm Overflow Removal
- Drainage Communities

This is drainage community reference DC\_11 which is within the Consett area.

The drainage community is classified as low priority based upon it containing a river water asset discharging to an area without environmental concerns.

The DWMP recommends that storage at the storm overflow(s) and storage in the catchment is created to manage and improve spill and flooding performance.

The application of growth in the catchment has shown that no investment is required at the sewage treatment works.

**£1,040,000**

Cost

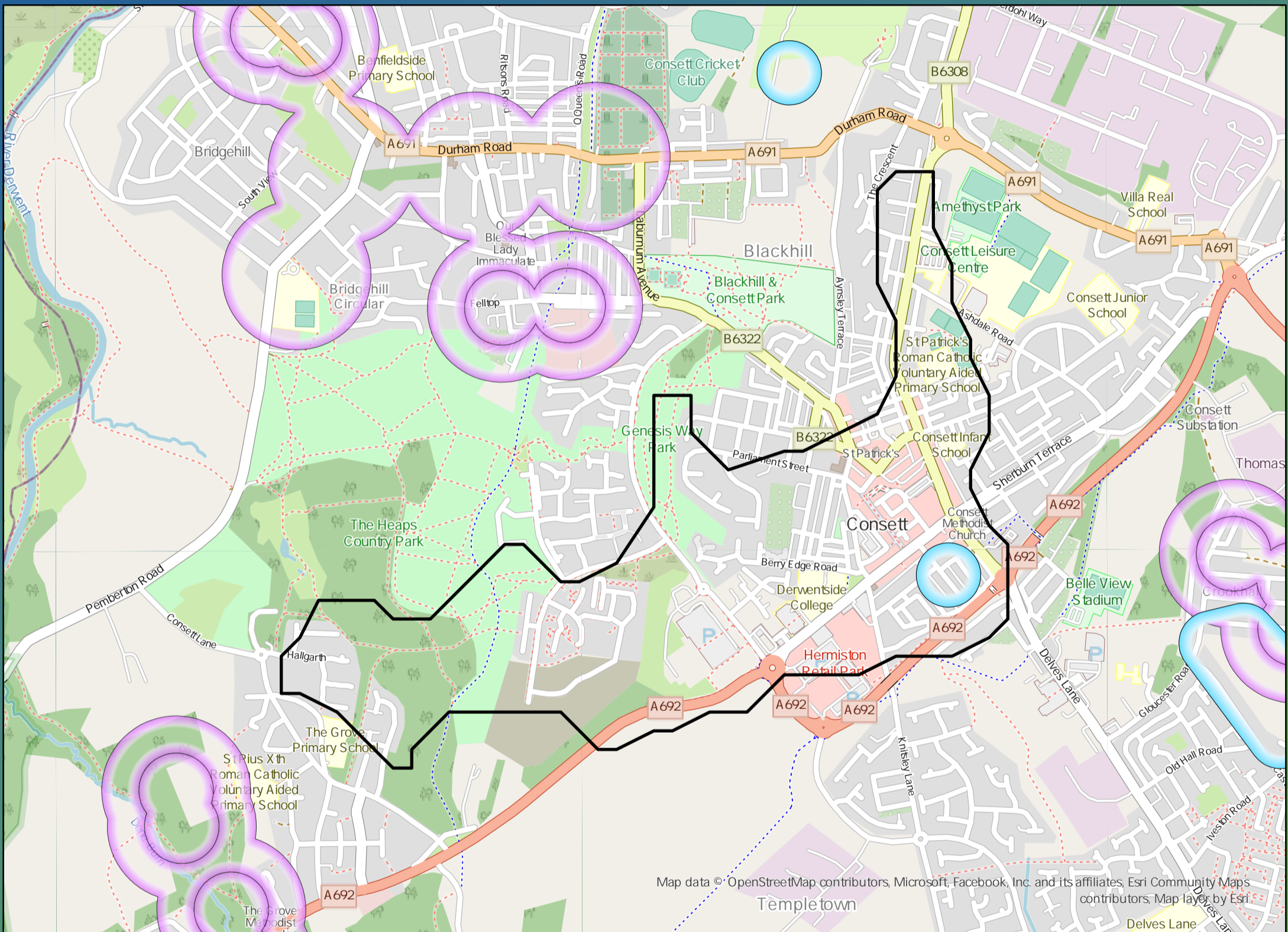
**£460,000**

Benefit

# DWMP Drainage Community Summary Consett



<p>Properties at Risk of Flooding Internally</p>	2020 <b>8</b>	<p>Storm overflows spilling to Rivers</p>	<p>Storm overflows spilling to Bathing Waters</p>	<p>Manholes at Risk of Pollution</p>	<p>Number of spills to the Environment</p>
	2045 <b>0</b>	<p>Site of Special Scientific Interest</p>	<p>Strategic Area of Conservation</p>	<p>Strategic Area for Ecology</p>	
<p>Post Investment</p>	<b>0</b>	<b>No</b>	<b>No</b>	<b>No</b>	<p>Post Investment</p>
	<b>0</b>				<b>0</b>



## Opportunities

- 3rd Party Stakeholder
- WINEP Programme
- Storm Overflow Programme
- Blue Green Corridor
- Storm Overflow Removal
- Drainage Communities

This is drainage community reference DC\_12 which is within the Consett area.  
 The drainage community is classified as low priority based upon it containing a river water asset discharging to an area without environmental concerns.  
 The DWMP recommends that storage at the storm overflow(s) and storage in the catchment is created to manage and improve spill and flooding performance.  
 The application of growth in the catchment has shown that no investment is required at the sewage treatment works.



**£850,000**

Cost



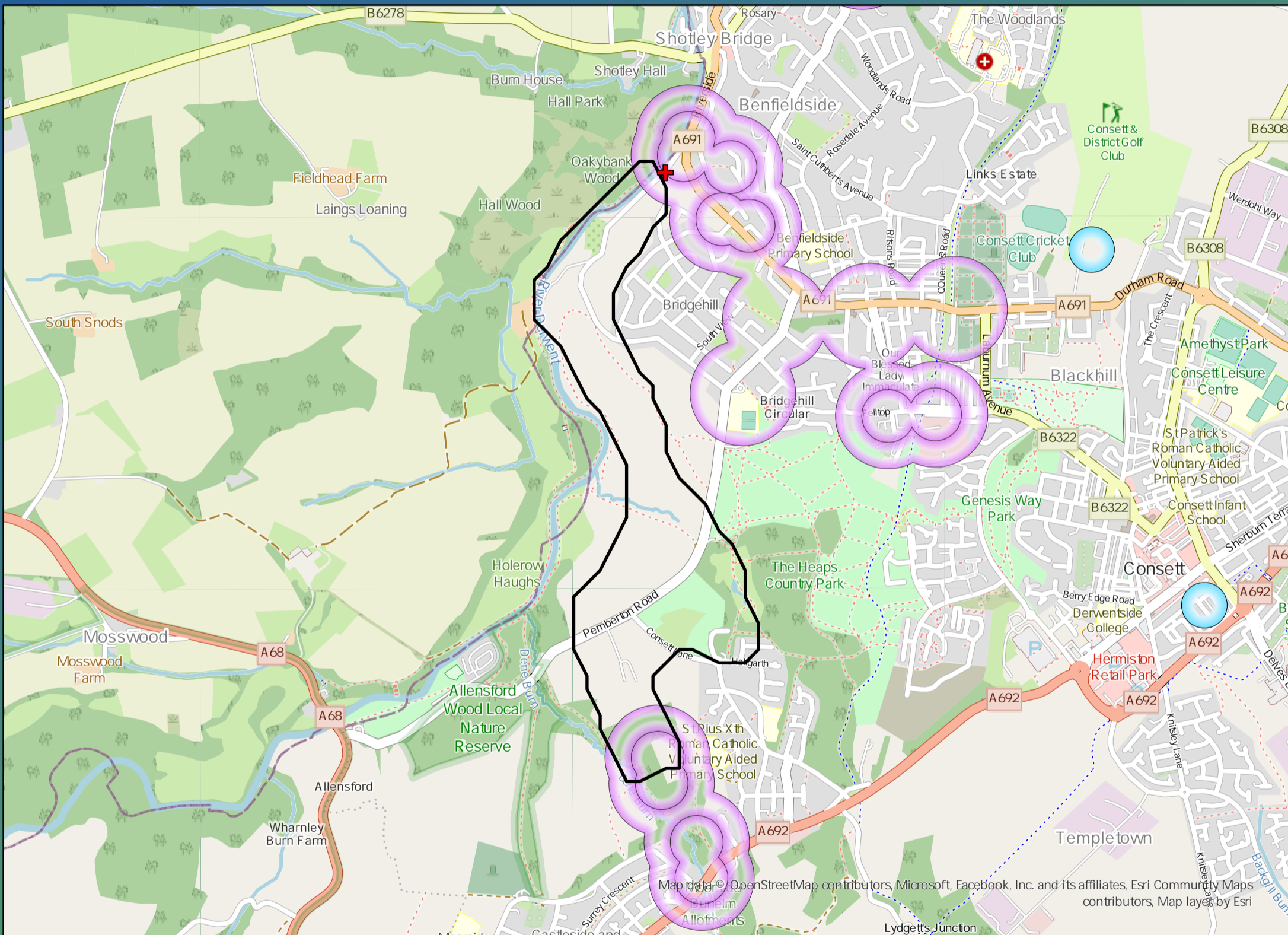
**£340,000**

Benefit

# DWMP Drainage Community Summary Consett



<p>Properties at Risk of Flooding Internally</p>	2020 0	<p>Storm overflows spilling to Rivers</p>	2020 0	<p>Storm overflows spilling to Bathing Waters</p>	2020 0	<p>Manholes at Risk of Pollution</p>	2020 0	<p>Number of spills to the Environment</p>	2020 0
	2045 0		<p>Site of Special Scientific Interest</p>		2045 0		<p>Strategic Area of Conservation</p>		2045 0
	0		No		No		No		0



## Opportunities

- 3rd Party Stakeholder
- WINEP Programme
- Storm Overflow Programme
- Blue Green Corridor
- Storm Overflow Removal
- Drainage Communities

This is drainage community reference DC\_13 which is within the Consett area.  
 The drainage community is classified as low priority based upon it containing a river water asset discharging to an area without environmental concerns.  
 The DWMP recommends that no investment is required due to the performance of the storm overflow and level of internal property flood risk in the catchment. The catchment will be monitored for future change.  
 The application of growth in the catchment has shown that no investment is required at the sewage treatment works.

**£0**

Cost

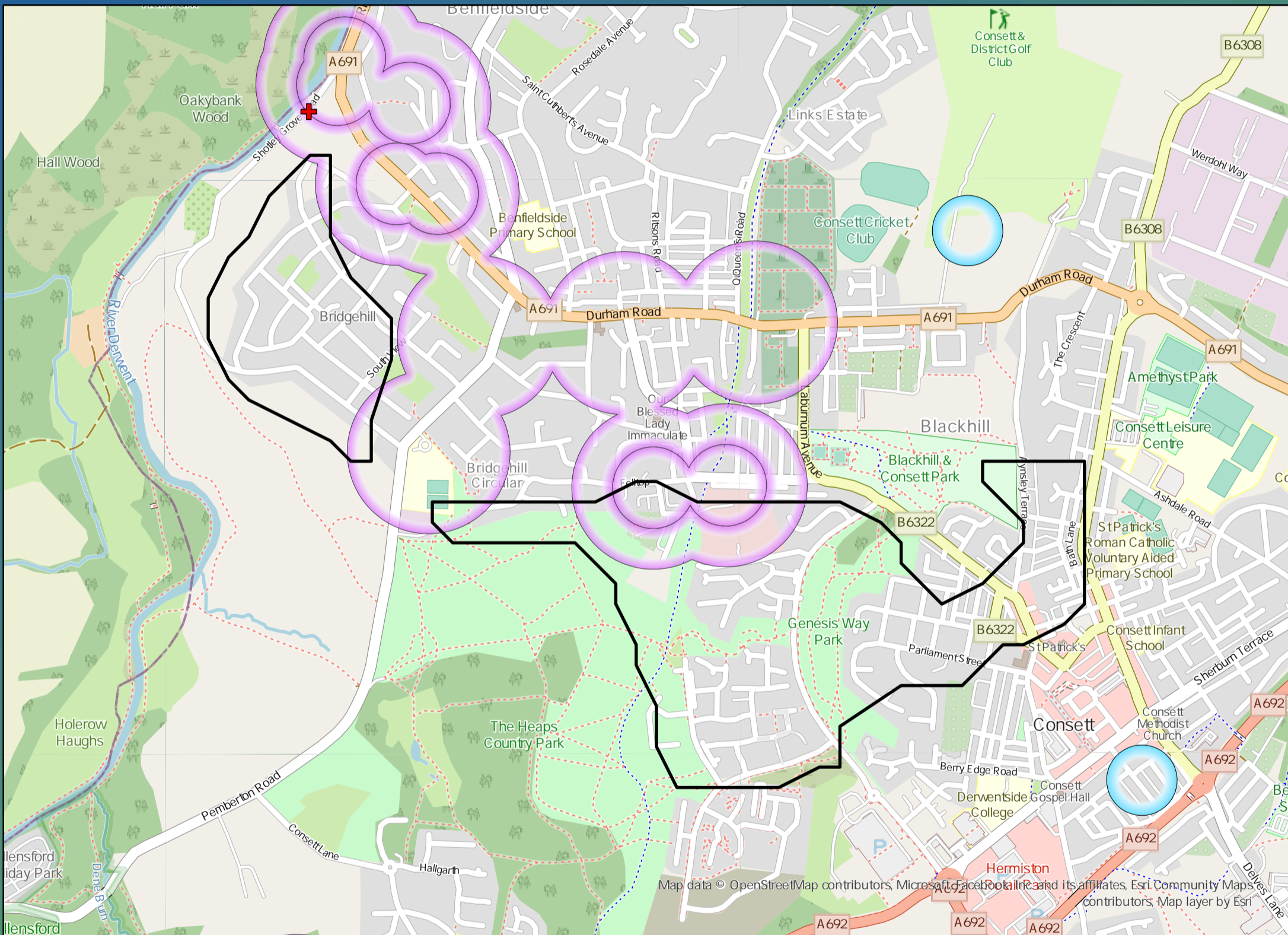
**£0**

Benefit

# DWMP Drainage Community Summary Consett



<p>Properties at Risk of Flooding Internally</p>	2020 <b>9</b>	<p>1 Storm overflows spilling to Rivers</p>	<p>0 Storm overflows spilling to Bathing Waters</p>	<p>0 Manholes at Risk of Pollution</p>	<p>Number of spills to the Environment</p>
	2045 <b>9</b> Post Investment <b>0</b>	<p>No Site of Special Scientific Interest</p>	<p>No Strategic Area of Conservation</p>	<p>No Strategic Area for Ecology</p>	



## Opportunities

- 3rd Party Stakeholder
- WINEP Programme
- Storm Overflow Programme
- Blue Green Corridor
- Storm Overflow Removal
- Drainage Communities

This is drainage community reference DC\_14 which is within the Consett area. The drainage community is classified as low priority based upon it containing a river water asset discharging to an area without environmental concerns. The DWMP recommends that storage at the storm overflow(s) and storage in the catchment is created to manage and improve spill and flooding performance. The application of growth in the catchment has shown that no investment is required at the sewage treatment works.



Cost

£2,900,000



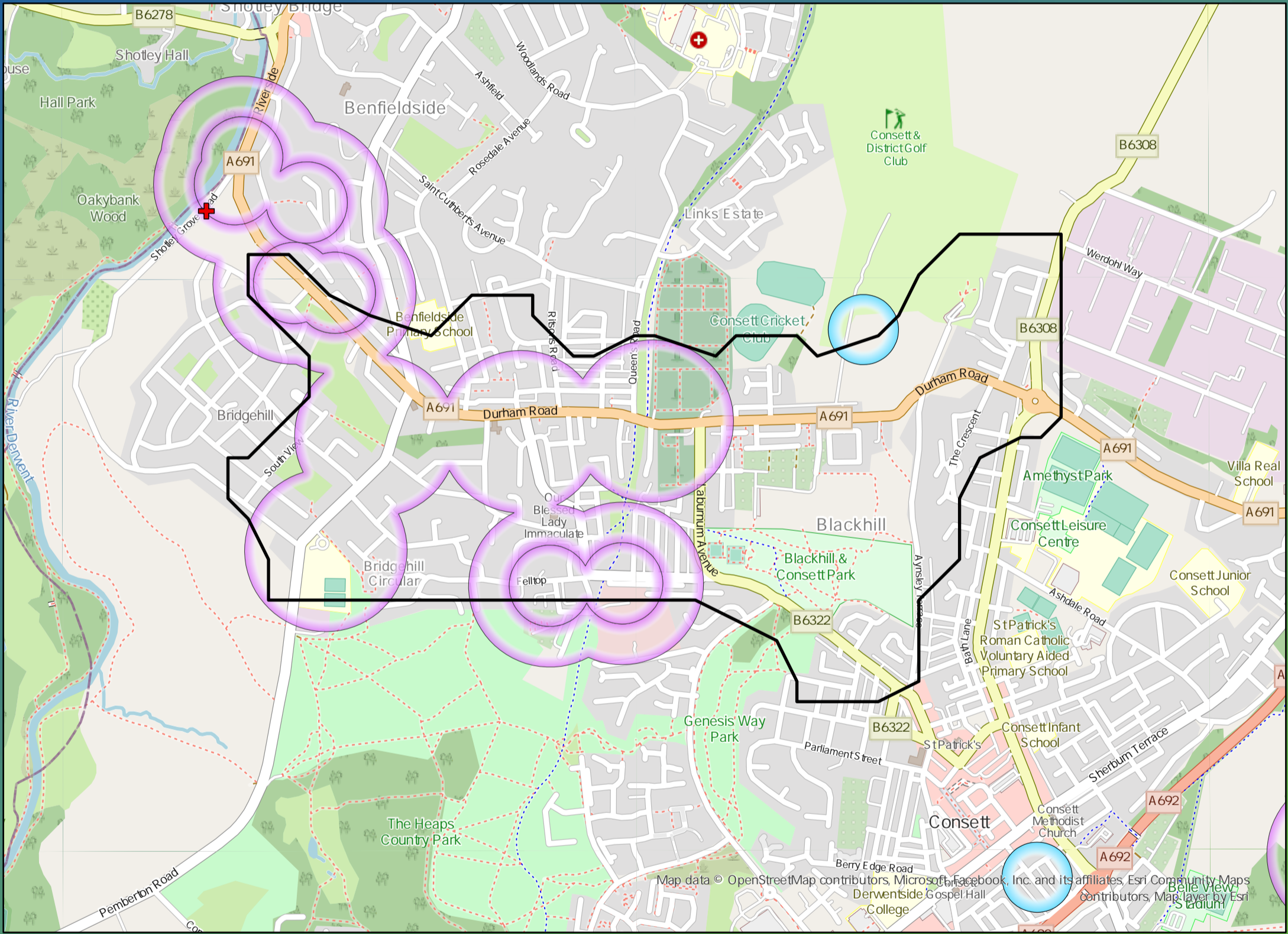
Benefit

£3,780,000

# DWMP Drainage Community Summary Consett



<p>Properties at Risk of Flooding Internally</p>	2020 <b>57</b>	<p>6</p> <p>Storm overflows spilling to Rivers</p>	<p>0</p> <p>Storm overflows spilling to Bathing Waters</p>	<p>0</p> <p>Manholes at Risk of Pollution</p>	<p>Number of spills to the Environment</p>
	2045 <b>92</b>	<p>No</p> <p>Site of Special Scientific Interest</p>	<p>No</p> <p>Strategic Area of Conservation</p>	<p>No</p> <p>Strategic Area for Ecology</p>	



## Opportunities

- 3rd Party Stakeholder
- WINEP Programme
- Storm Overflow Programme
- Blue Green Corridor
- Storm Overflow Removal
- Drainage Communities

This is drainage community reference DC\_15 which is within the Consett area.

The drainage community is classified as low priority based upon it containing a river water asset discharging to an area without environmental concerns.

The DWMP recommends that storage at the storm overflow(s) and storage in the catchment is created to manage and improve spill and flooding performance.

The application of growth in the catchment has shown that no investment is required at the sewage treatment works.

**£4,890,000**

Cost

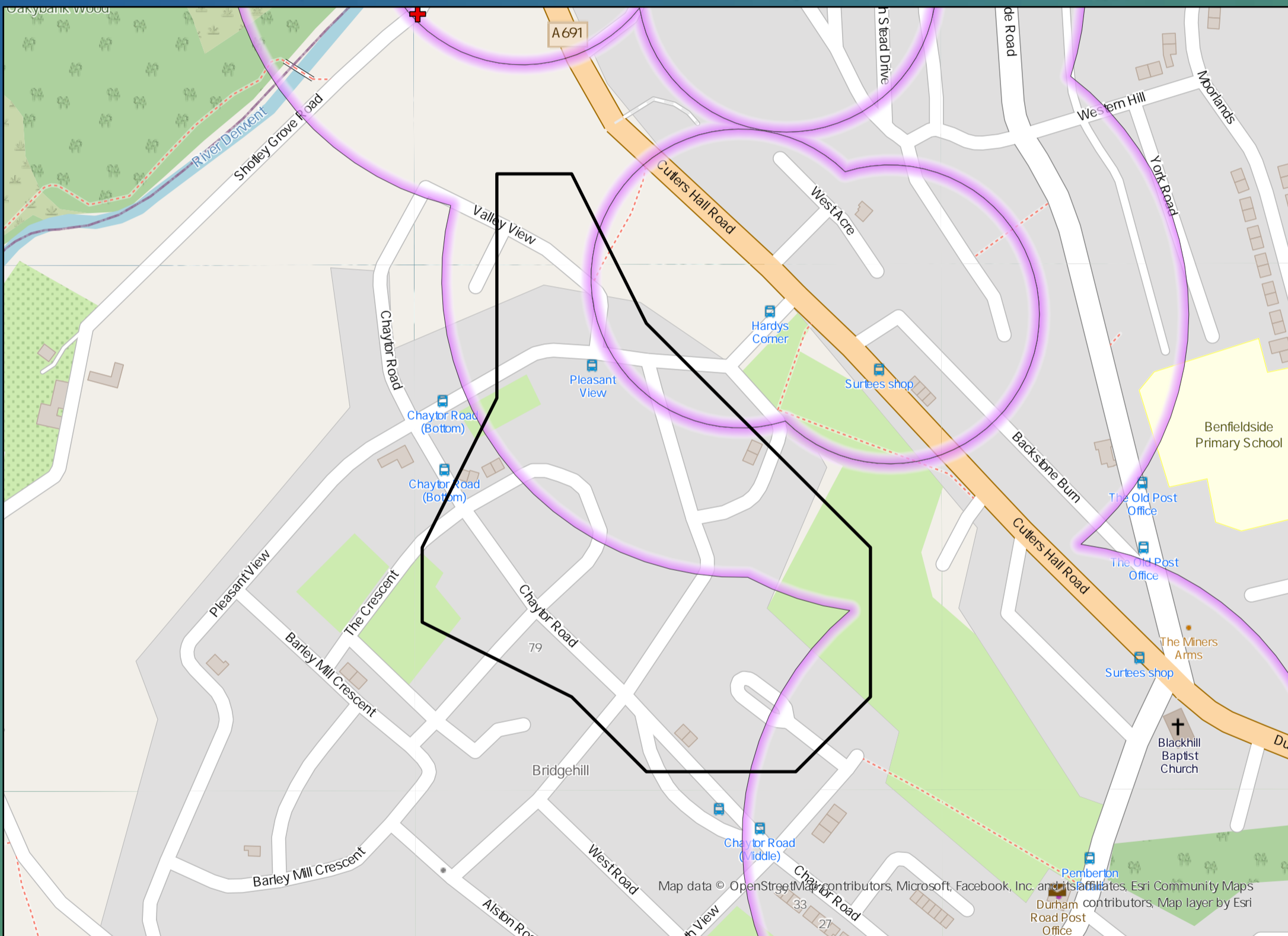
**£11,400,000**

Benefit

# DWMP Drainage Community Summary Consett



<p>Properties at Risk of Flooding Internally</p>	2020 0	<p>Storm overflows spilling to Rivers</p>	0	<p>Storm overflows spilling to Bathing Waters</p>	0	<p>Manholes at Risk of Pollution</p>	0	<p>Number of spills to the Environment</p>	2020 0
	2045 0	<p>Site of Special Scientific Interest</p>	No	<p>Strategic Area of Conservation</p>	No	<p>Strategic Area for Ecology</p>	No		2045 0
	Post Investment 0							Post Investment 0	



## Opportunities

- 3rd Party Stakeholder
- WINEP Programme
- Storm Overflow Programme
- Blue Green Corridor
- Storm Overflow Removal
- Drainage Communities

This is drainage community reference DC\_16 which is within the Consett area.

The drainage community is classified as low priority based upon it containing a river water asset discharging to an area without environmental concerns.

The DWMP recommends that no investment is required due to the performance of the storm overflow and level of internal property flood risk in the catchment. The catchment will be monitored for future change.

The application of growth in the catchment has shown that no investment is required at the sewage treatment works.

£0

Cost

£0

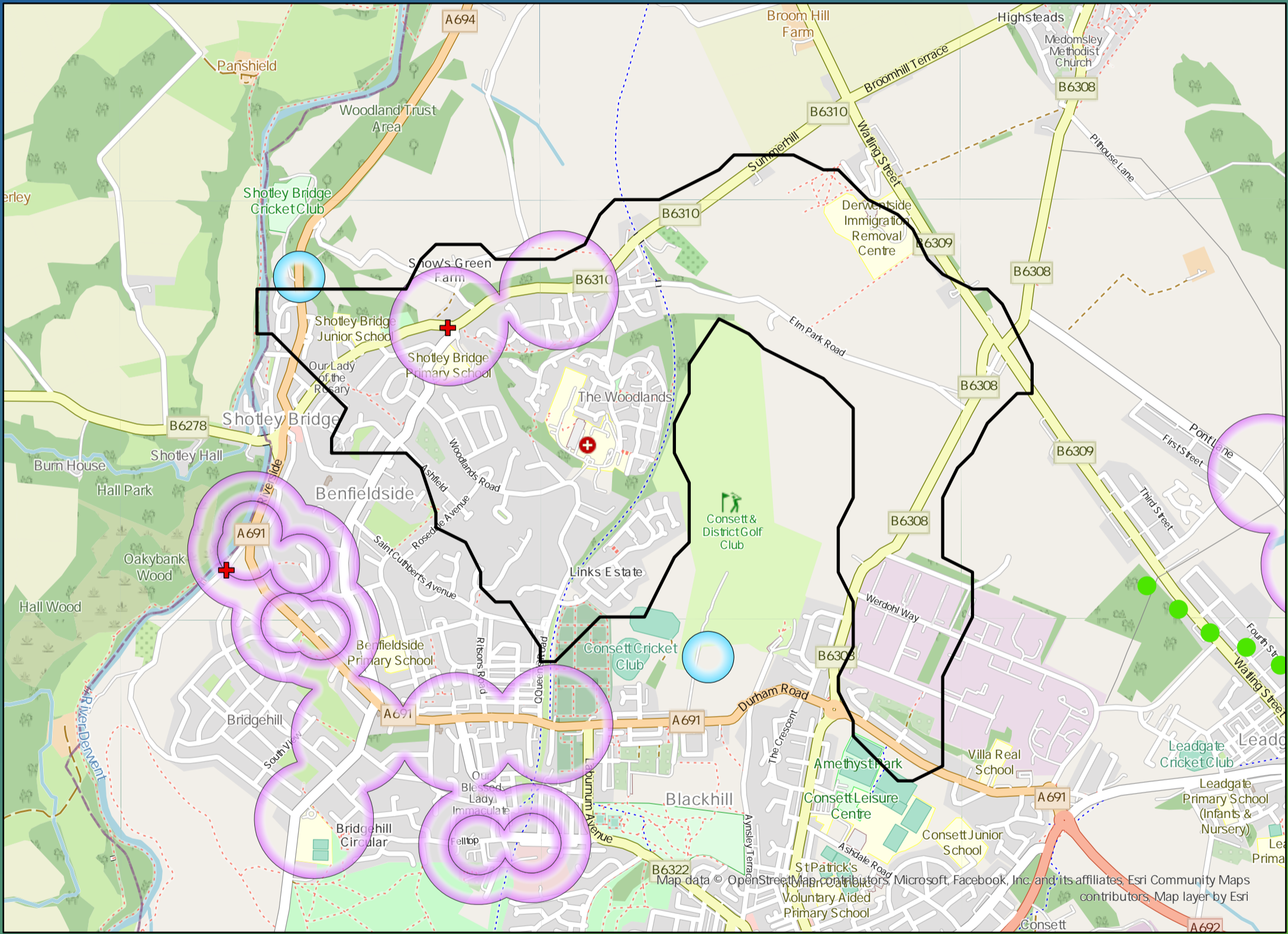
Benefit



# DWMP Drainage Community Summary Consett



<p>Properties at Risk of Flooding Internally</p>	2020 <b>51</b>	<p>2</p> <p>Storm overflows spilling to Rivers</p>	<p>0</p> <p>Storm overflows spilling to Bathing Waters</p>	<p>15</p> <p>Manholes at Risk of Pollution</p>	<p>Number of spills to the Environment</p>	2020 <b>34</b>
	2045 <b>62</b>	<p>No</p> <p>Site of Special Scientific Interest</p>	<p>No</p> <p>Strategic Area of Conservation</p>	<p>No</p> <p>Strategic Area for Ecology</p>		2045 <b>34</b>
	Post Investment <b>0</b>				Post Investment <b>20</b>	



This is drainage community reference DC\_17 which is within the Consett area.

The drainage community is classified as low priority based upon it containing a river water asset discharging to an area without environmental concerns.

The DWMP recommends that storage at the storm overflow(s) and storage in the catchment is created to manage and improve spill and flooding performance.

The application of growth in the catchment has shown that no investment is required at the sewage treatment works.

**£** £2,920,000

Cost

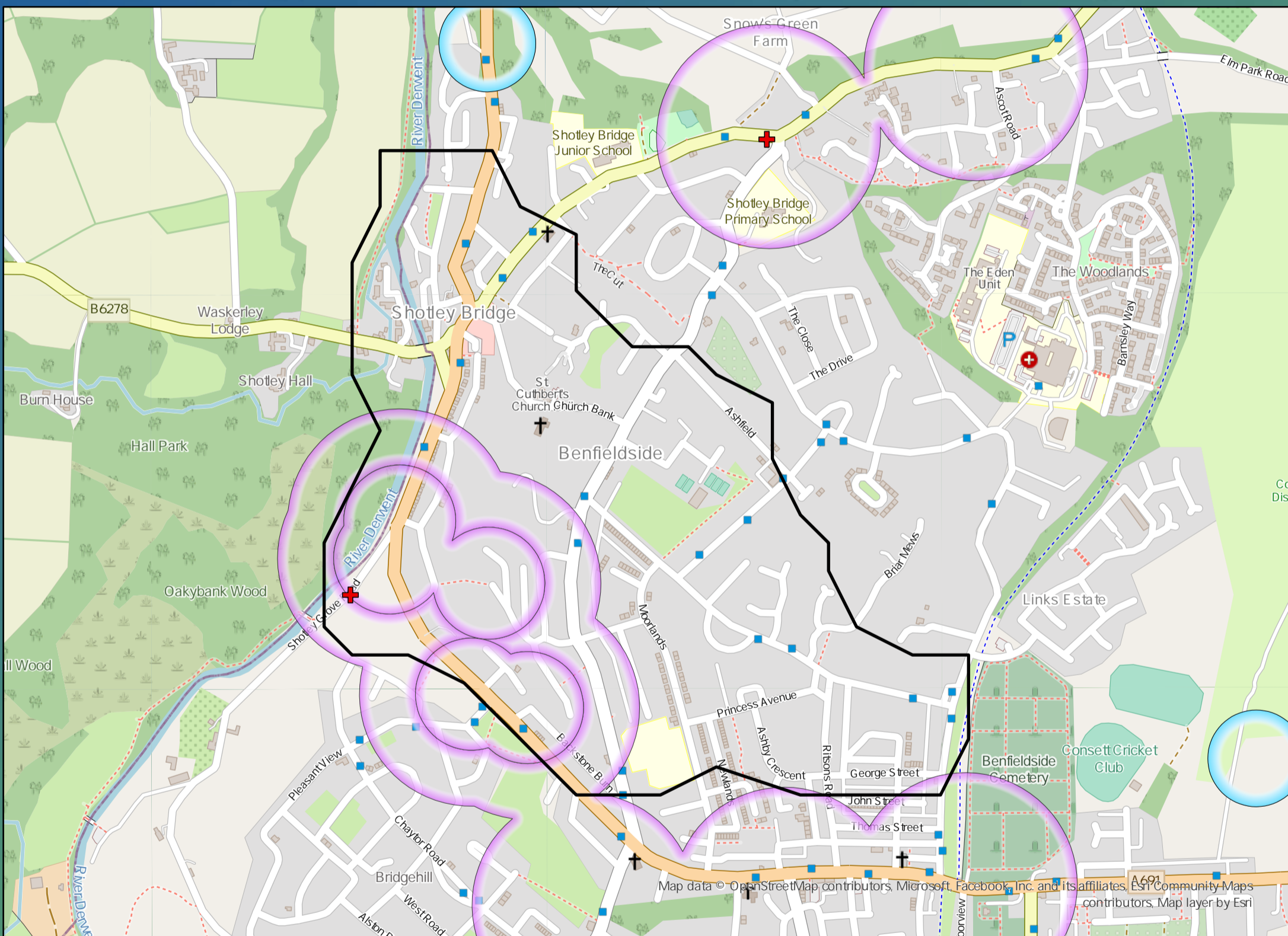
**£** £6,560,000

Benefit

# DWMP Drainage Community Summary Consett



<p>Properties at Risk of Flooding Internally</p>	2020 <b>26</b>	<p>4</p> <p>Storm overflows spilling to Rivers</p>	<p>0</p> <p>Storm overflows spilling to Bathing Waters</p>	<p>0</p> <p>Manholes at Risk of Pollution</p>	<p>Number of spills to the Environment</p>
	2045 <b>39</b>	<p>No</p> <p>Site of Special Scientific Interest</p>	<p>No</p> <p>Strategic Area of Conservation</p>	<p>No</p> <p>Strategic Area for Ecology</p>	
	Post Investment <b>0</b>				



## Opportunities

- 3rd Party Stakeholder
- WINEP Programme
- Storm Overflow Programme
- Blue Green Corridor
- Storm Overflow Removal
- Drainage Communities

This is drainage community reference DC\_18 which is within the Consett area.

The drainage community is classified as low priority based upon it containing a river water asset discharging to an area without environmental concerns.

The DWMP recommends that storage at the storm overflow(s) and storage in the catchment is created to manage and improve spill and flooding performance.

The application of growth in the catchment has shown that no investment is required at the sewage treatment works.



**£3,120,000**

Cost



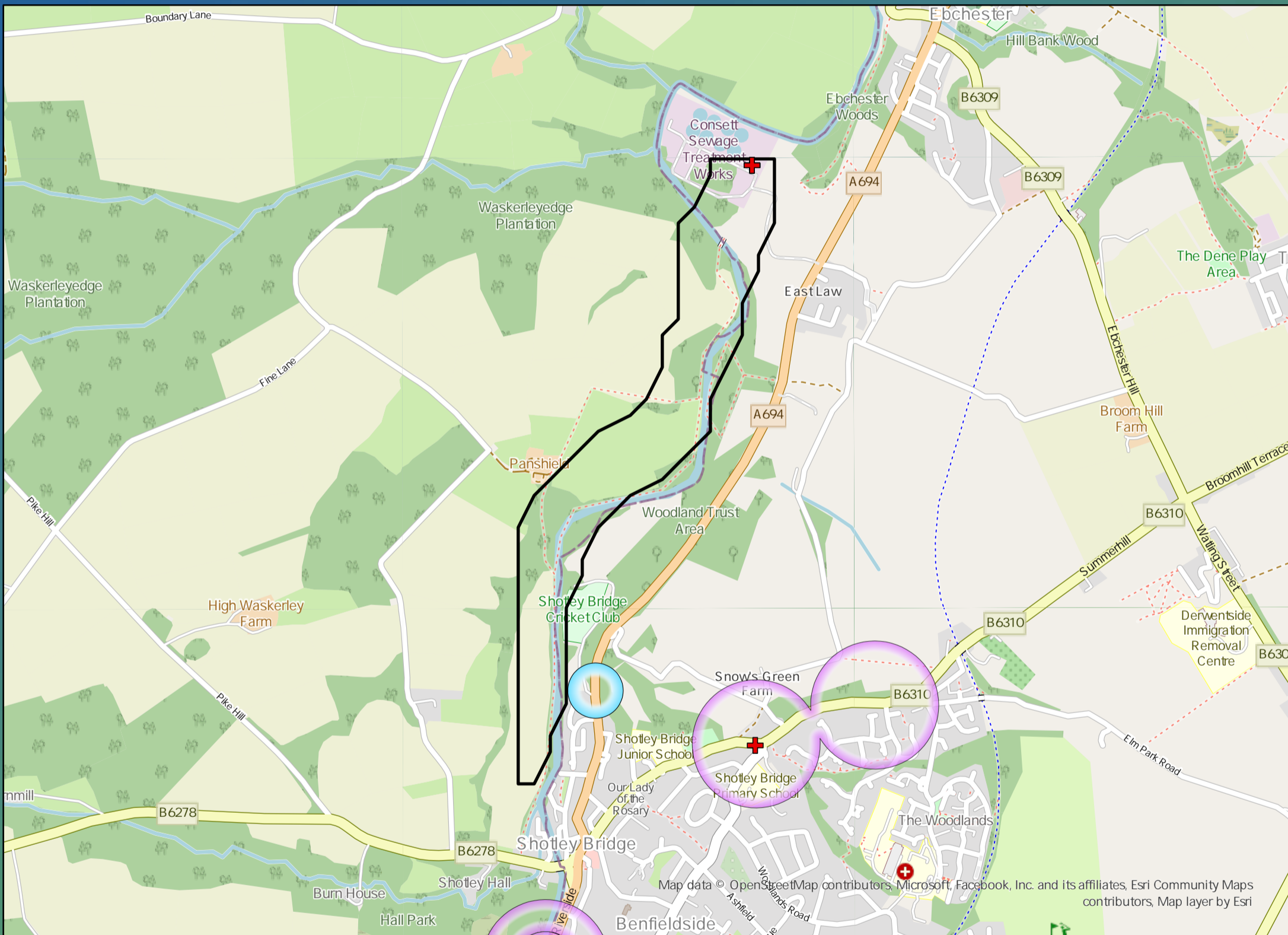
**£2,090,000**

Benefit

# DWMP Drainage Community Summary Consett



<p>Properties at Risk of Flooding Internally</p>	2020 <b>0</b>	<p>Storm overflows spilling to Rivers</p>	<p>Storm overflows spilling to Bathing Waters</p>	<p>Manholes at Risk of Pollution</p>	<p>Number of spills to the Environment</p>
	2045 <b>0</b>	<p>Site of Special Scientific Interest</p>	<p>Strategic Area of Conservation</p>	<p>Strategic Area for Ecology</p>	
	Post Investment <b>0</b>	<b>No</b>	<b>No</b>	<b>Yes</b>	Post Investment <b>9</b>
	<b>0</b>				<b>9</b>



## Opportunities

- 3rd Party Stakeholder
- WINEP Programme
- Storm Overflow Programme
- Blue Green Corridor
- Storm Overflow Removal
- Drainage Communities

This is drainage community reference DC\_19 which is within the Consett area.

The drainage community is classified as low priority based upon it containing a river water asset discharging to an area without environmental concerns.

The DWMP recommends that no investment is required due to the performance of the storm overflow and level of internal property flood risk in the catchment. The catchment will be monitored for future change.

The application of growth in the catchment has shown that no investment is required at the sewage treatment works.

**£1,760,000**

Cost

**£1,100,000**

Benefit