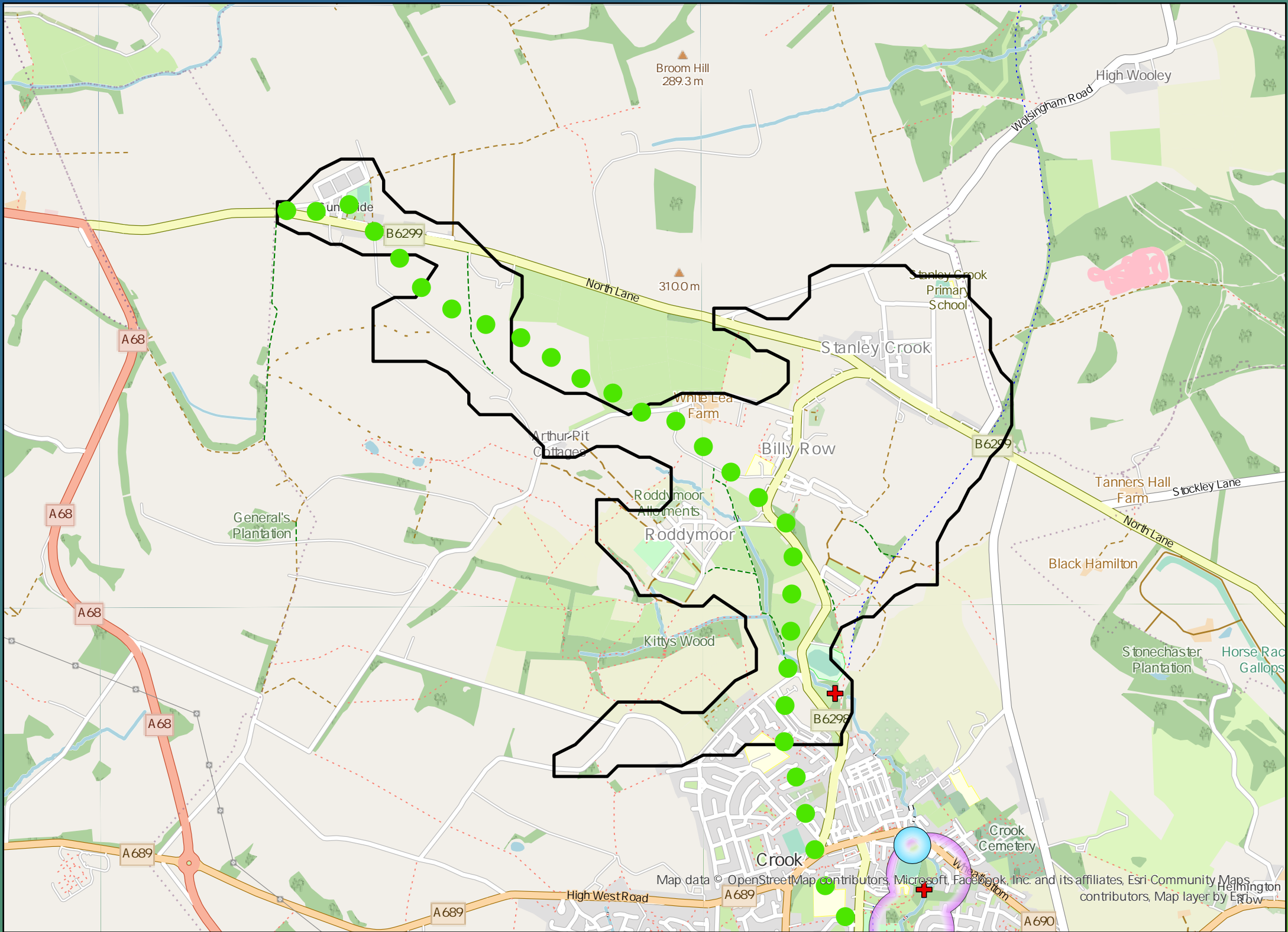


DWMP Drainage Community Summary Low Wadsworth



<p>Properties at Risk of Flooding Internally</p>	2020 45	<p>1</p> <p>Storm overflows spilling to Rivers</p>	<p>0</p> <p>Storm overflows spilling to Bathing Waters</p>	<p>4</p> <p>Manholes at Risk of Pollution</p>	<p>Number of spills to the Environment</p>
	2045 59	<p>No</p> <p>Site of Special Scientific Interest</p>	<p>No</p> <p>Strategic Area of Conservation</p>	<p>No</p> <p>Strategic Area for Ecology</p>	
	Post Investment 0				



Opportunities

- 3rd Party Stakeholder
- WINEP Programme
- Storm Overflow Programme
- Blue Green Corridor
- Storm Overflow Removal
- Drainage Communities

This is drainage community reference DC_01 which is within the Low Wadsworth area. The drainage community is classified as low priority based upon it containing a river water asset discharging to an area without environmental concerns. The DWMP recommends that storage at the storm overflow(s) and storage in the catchment is created to manage and improve spill and flooding performance. The application of growth in the catchment has shown that no investment is required at the sewage treatment works.



£2,330,000

Cost



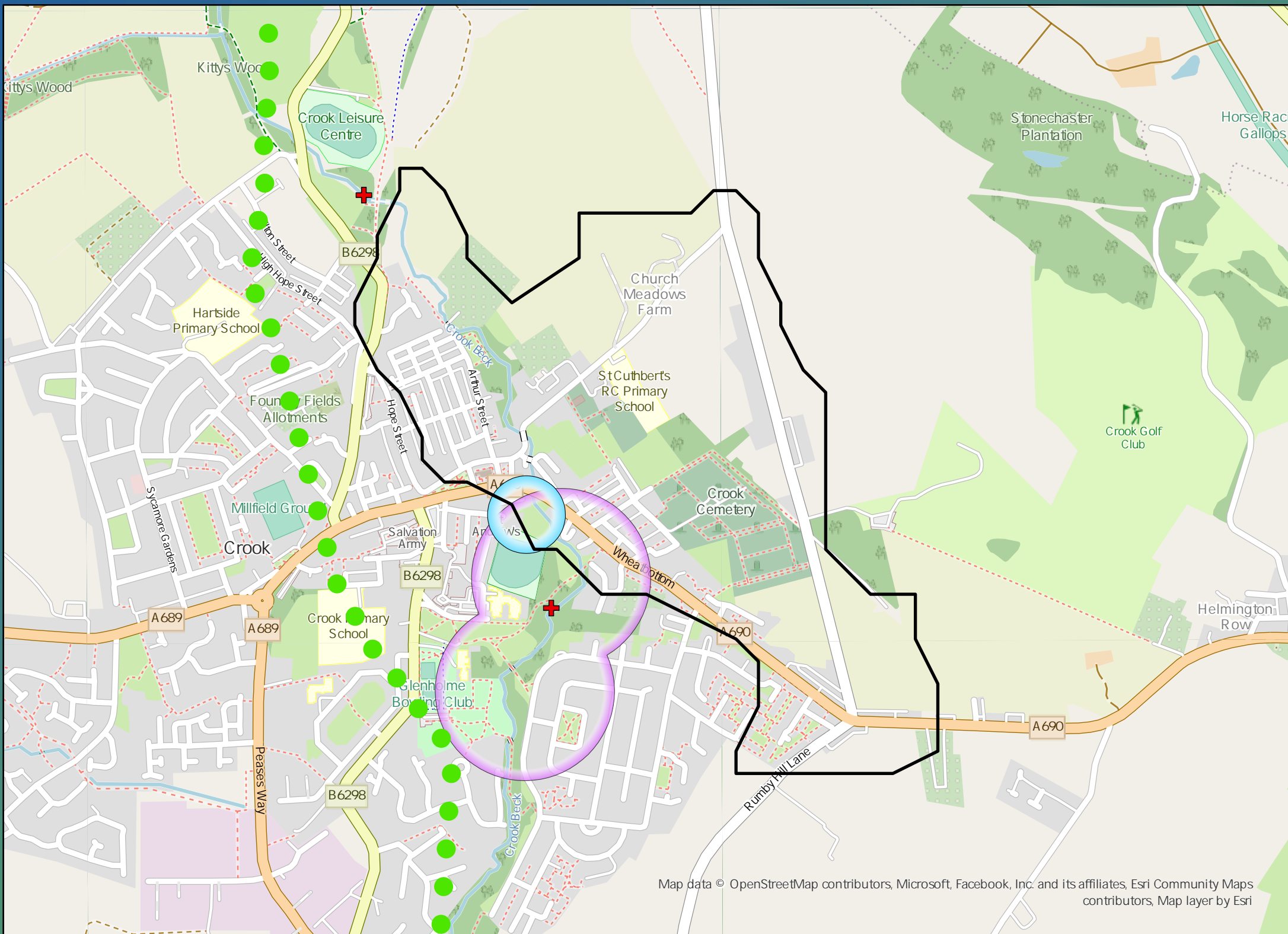
£5,440,000

Benefit

DWMP Drainage Community Summary Low Wadsworth



<p>Properties at Risk of Flooding Internally</p>	2020 27	<p>Storm overflows spilling to Rivers</p>	<p>Storm overflows spilling to Bathing Waters</p>	<p>Manholes at Risk of Pollution</p>	<p>Number of spills to the Environment</p>
	2045 0	<p>Site of Special Scientific Interest</p>	<p>Strategic Area of Conservation</p>	<p>Strategic Area for Ecology</p>	



Map data © OpenStreetMap contributors, Microsoft, Facebook, Inc. and its affiliates, Esri Community Maps contributors, Map layer by Esri

Opportunities

- 3rd Party Stakeholder
- WINEP Programme
- Storm Overflow Programme
- Blue Green Corridor
- Storm Overflow Removal
- Drainage Communities

This is drainage community reference DC_O2 which is within the Low Wadsworth area. The drainage community is classified as low priority based upon it containing a river water asset discharging to an area without environmental concerns. The DWMP recommends that storage at the storm overflow(s) and storage in the catchment is created to manage and improve spill and flooding performance. The application of growth in the catchment has shown that no investment is required at the sewage treatment works.

£1,370,000

Cost

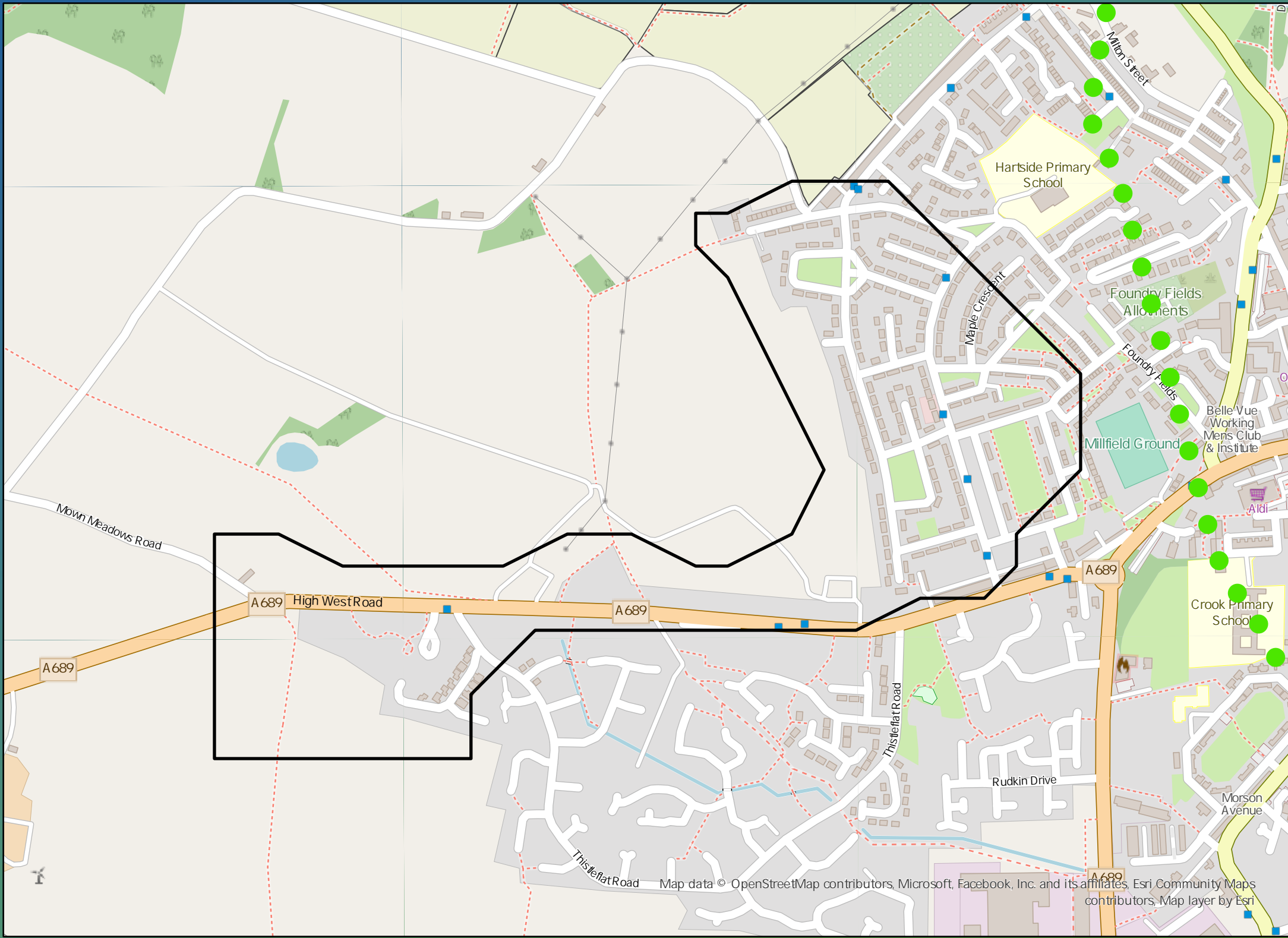
£670,000

Benefit

DWMP Drainage Community Summary Low Wadsworth



<p>Properties at Risk of Flooding Internally</p>	2020 19	<p>Storm overflows spilling to Rivers</p>	<p>Storm overflows spilling to Bathing Waters</p>	<p>Manholes at Risk of Pollution</p>	<p>Number of spills to the Environment</p>
	2045 23 Post Investment 0	<p>Site of Special Scientific Interest</p>	<p>Strategic Area of Conservation</p>	<p>Strategic Area for Ecology</p>	



Opportunities

- 3rd Party Stakeholder
- WINEP Programme
- Storm Overflow Programme
- Blue Green Corridor
- Storm Overflow Removal
- Drainage Communities

This is drainage community reference DC_03 which is within the Low Wadsworth area.
 The drainage community is classified as low priority based upon it containing a river water asset discharging to an area without environmental concerns.
 The DWMP recommends that storage at the storm overflow(s) and storage in the catchment is created to manage and improve spill and flooding performance.
 The application of growth in the catchment has shown that no investment is required at the sewage treatment works.

£1,220,000

Cost

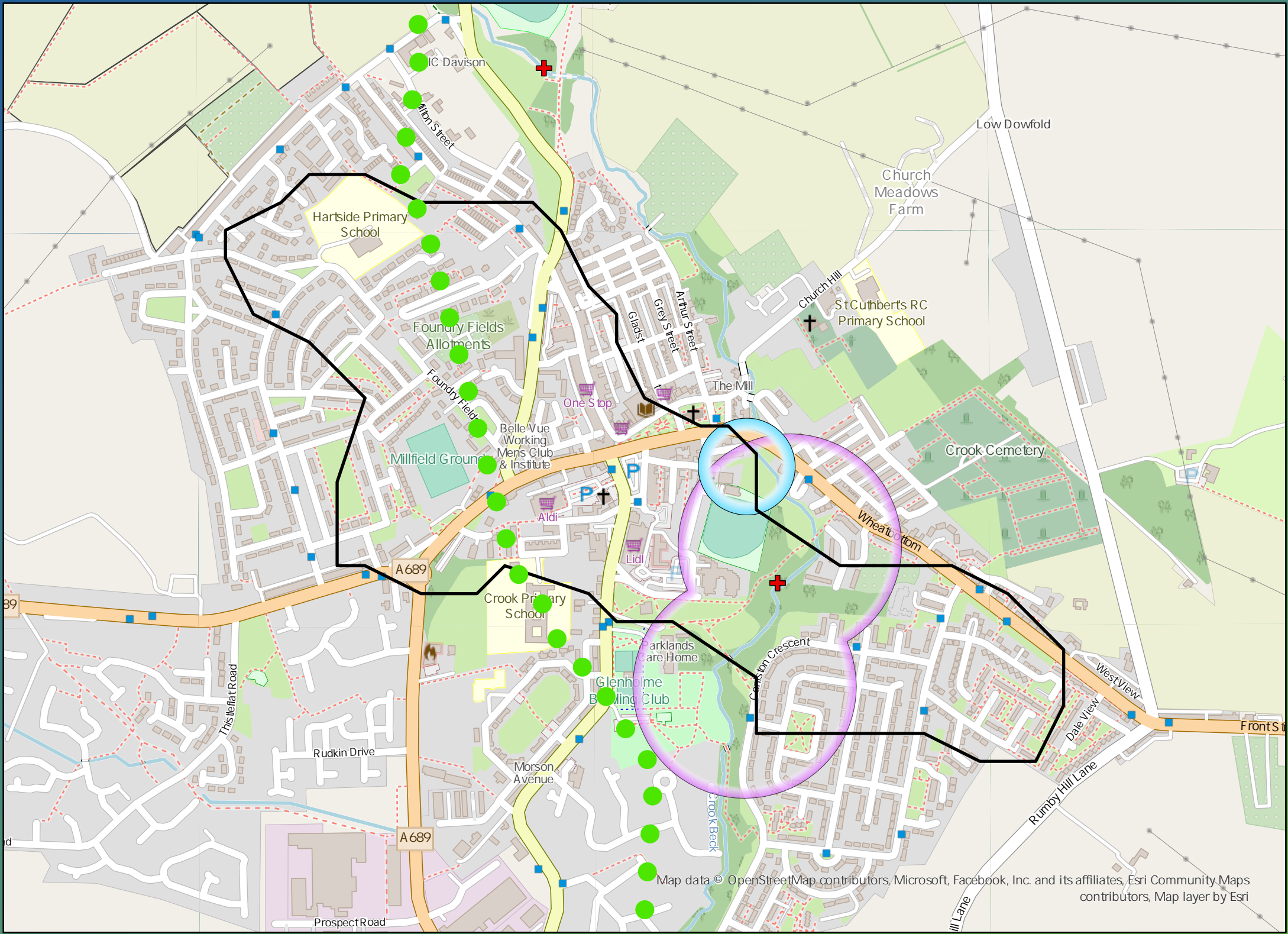
£690,000

Benefit

DWMP Drainage Community Summary Low Wadsworth



<p>Properties at Risk of Flooding Internally</p>	2020 51	<p>Storm overflows spilling to Rivers</p>	<p>Storm overflows spilling to Bathing Waters</p>	<p>Manholes at Risk of Pollution</p>	<p>Number of spills to the Environment</p>
	2045 0	<p>Site of Special Scientific Interest</p>	<p>Strategic Area of Conservation</p>	<p>Strategic Area for Ecology</p>	



Opportunities

- 3rd Party Stakeholder
- WINEP Programme
- Storm Overflow Programme
- Blue Green Corridor
- Storm Overflow Removal
- Drainage Communities

This is drainage community reference DC_04 which is within the Low Wadsworth area. The drainage community is classified as low priority based upon it containing a river water asset discharging to an area without environmental concerns. The DWMP recommends that storage at the storm overflow(s) and storage in the catchment is created to manage and improve spill and flooding performance. The application of growth in the catchment has shown that no investment is required at the sewage treatment works.

£1,060,000

Cost

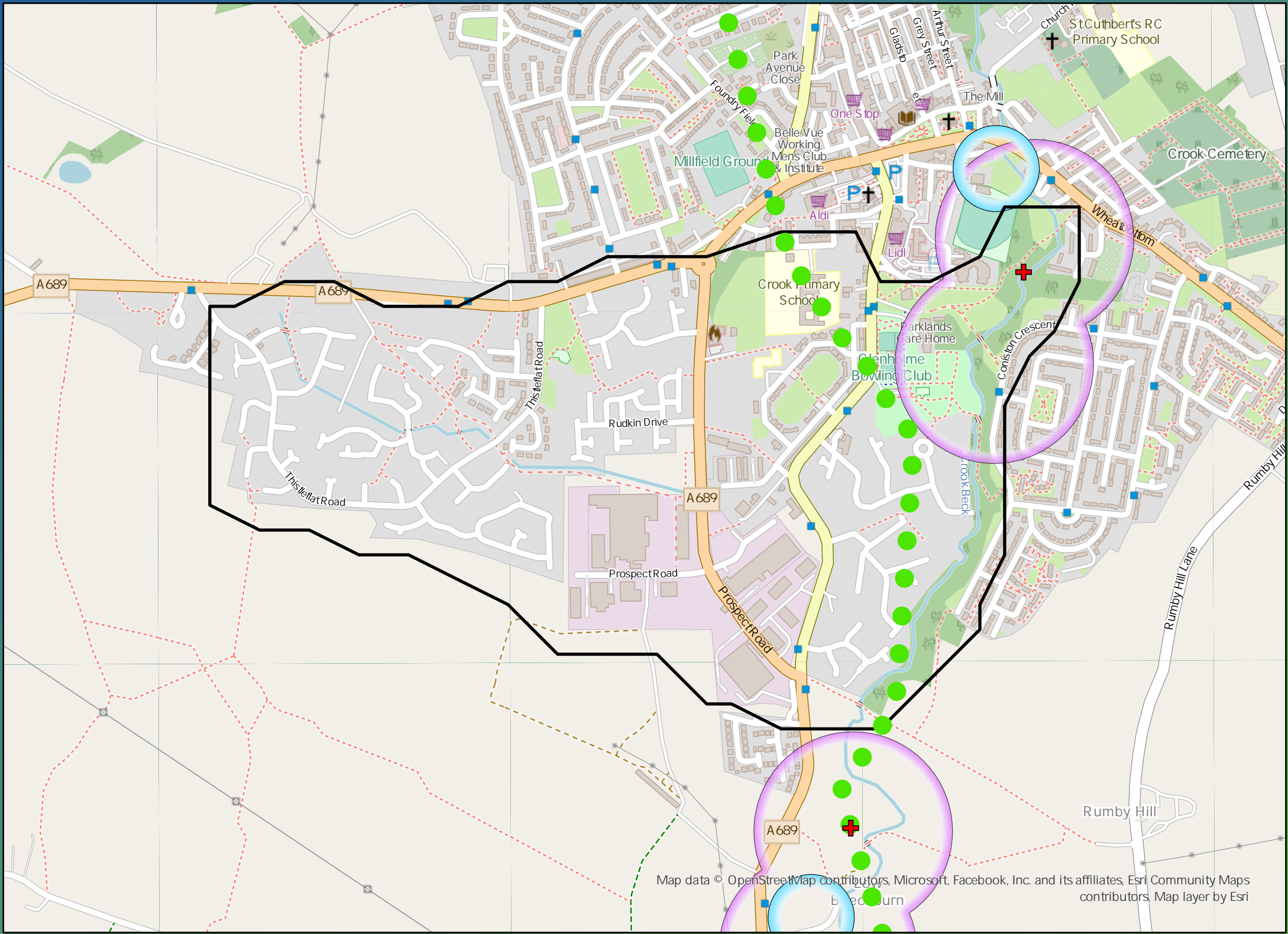
£1,450,000

Benefit

DWMP Drainage Community Summary Low Wadsworth



<p>Properties at Risk of Flooding Internally</p>	2020 60	<p>3</p> <p>Storm overflows spilling to Rivers</p>	<p>0</p> <p>Storm overflows spilling to Bathing Waters</p>	<p>11</p> <p>Manholes at Risk of Pollution</p>	<p>Number of spills to the Environment</p>
	2045 89	<p>No</p> <p>Site of Special Scientific Interest</p>	<p>No</p> <p>Strategic Area of Conservation</p>	<p>No</p> <p>Strategic Area for Ecology</p>	



Opportunities

- 3rd Party Stakeholder
- WINEP Programme
- Storm Overflow Programme
- Blue Green Corridor
- Storm Overflow Removal
- Drainage Communities

This is drainage community reference DC_05 which is within the Low Wadsworth area. The drainage community is classified as low priority based upon it containing a river water asset discharging to an area without environmental concerns. The DWMP recommends that storage at the storm overflow(s) and storage in the catchment is created to manage and improve spill and flooding performance. The application of growth in the catchment has shown that no investment is required at the sewage treatment works.

£7,440,000

Cost

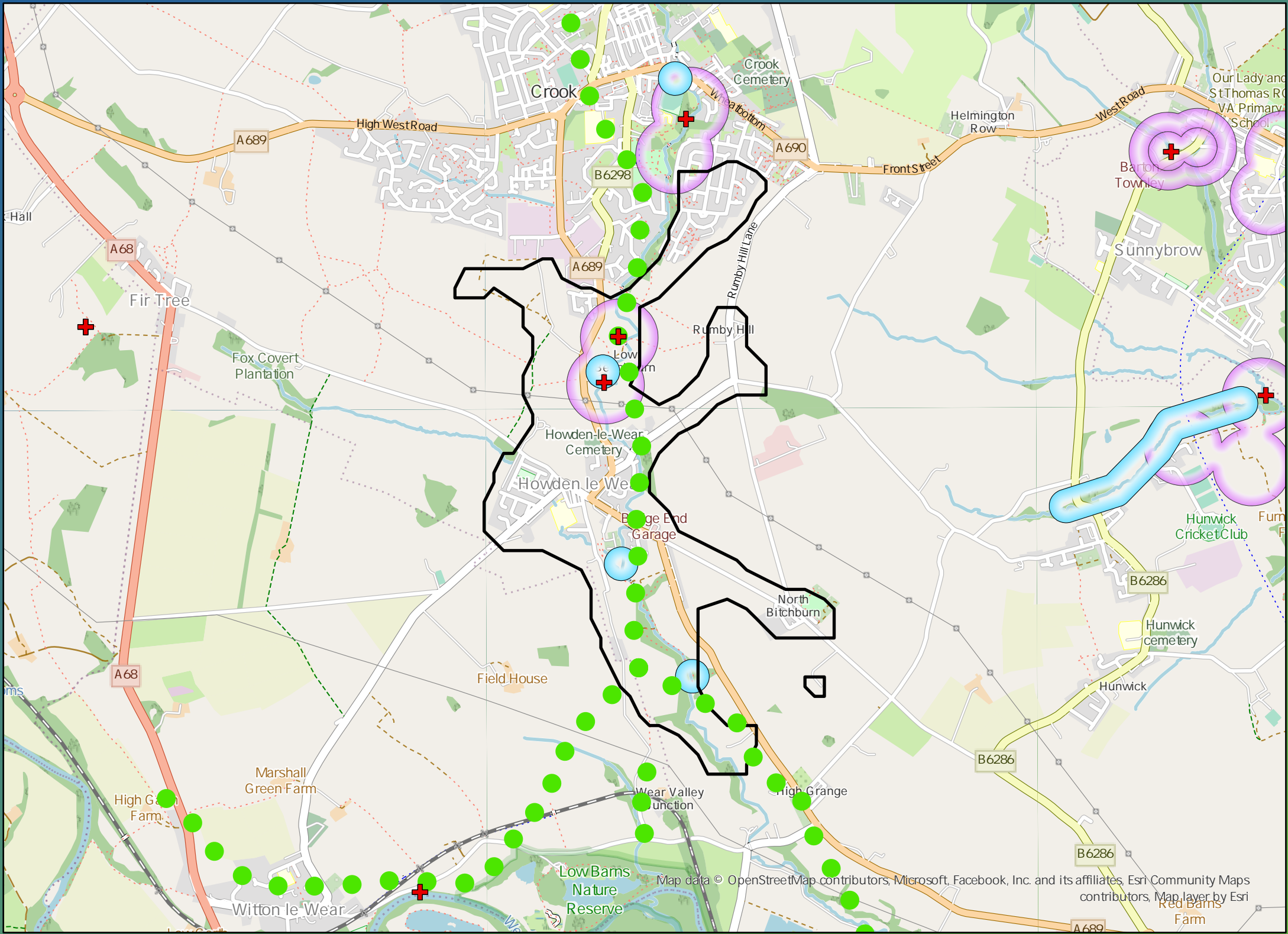
£21,680,000

Benefit

DWMP Drainage Community Summary Low Wadsworth



<p>Properties at Risk of Flooding Internally</p>	2020 6	<p>Storm overflows spilling to Rivers</p>	<p>Storm overflows spilling to Bathing Waters</p>	<p>Manholes at Risk of Pollution</p>	<p>Number of spills to the Environment</p>
	2045 23 Post Investment 0	<p>Site of Special Scientific Interest</p>	<p>Strategic Area of Conservation</p>	<p>Strategic Area for Ecology</p>	



Opportunities

- 3rd Party Stakeholder
- WINEP Programme
- Storm Overflow Programme
- Blue Green Corridor
- Storm Overflow Removal
- Drainage Communities

This is drainage community reference DC_06 which is within the Low Wadsworth area. The drainage community is classified as medium priority based upon it containing a RNAG asset discharging to an area without environmental concerns. The DWMP recommends that storage at the storm overflow(s) and storage in the catchment is created to manage and improve spill and flooding performance. The application of growth in the catchment has shown that no investment is required at the sewage treatment works.

£3,530,000

Cost

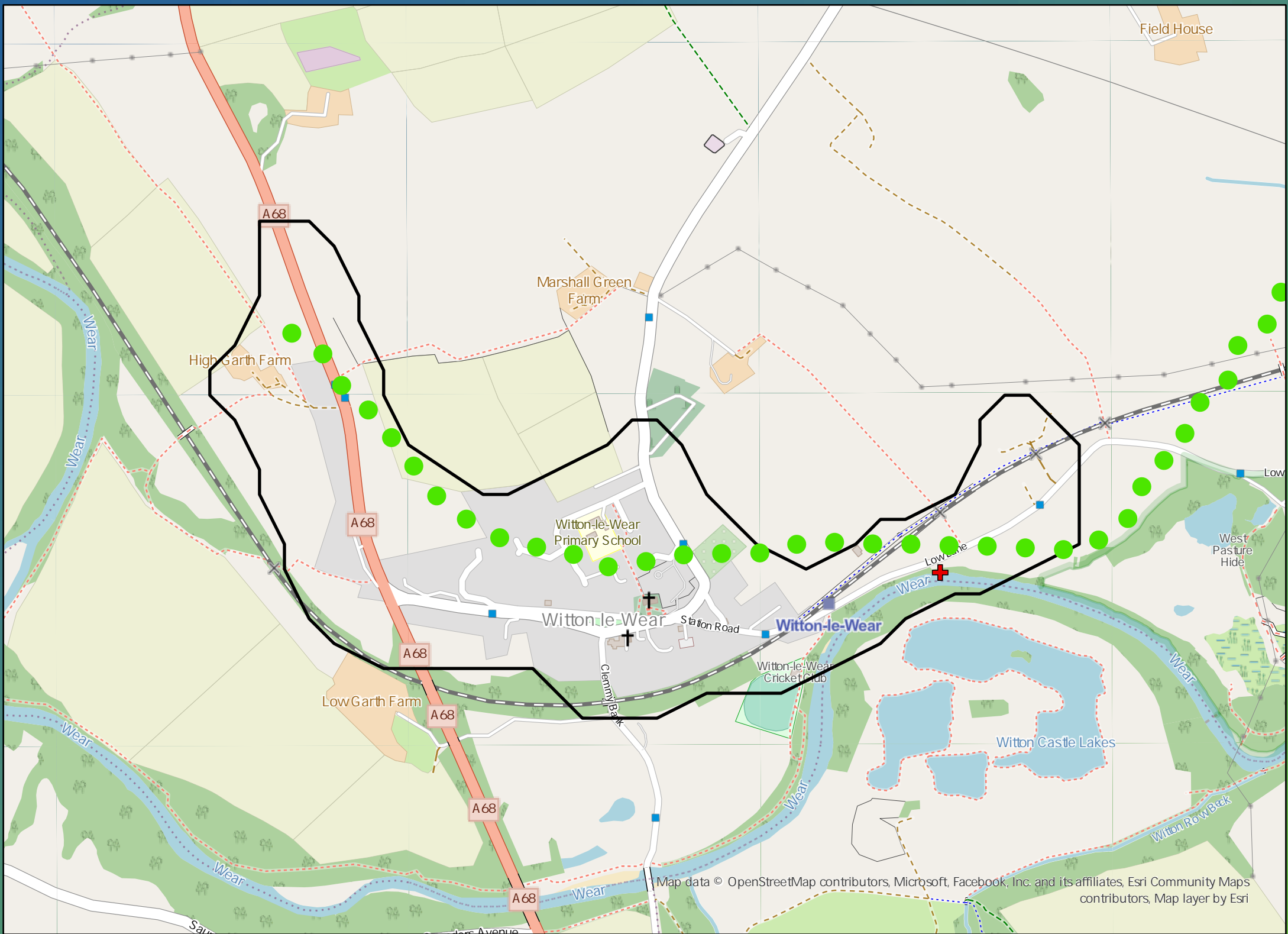
£7,170,000

Benefit

DWMP Drainage Community Summary Low Wadsworth



<p>Properties at Risk of Flooding Internally</p>	2020 2	<p>Storm overflows spilling to Rivers</p>	<p>Storm overflows spilling to Bathing Waters</p>	<p>Manholes at Risk of Pollution</p>	<p>Number of spills to the Environment</p>
	2045 5 Post Investment 0	<p>Site of Special Scientific Interest</p>	<p>Strategic Area of Conservation</p>	<p>Strategic Area for Ecology</p>	



Opportunities

- 3rd Party Stakeholder
- WINEP Programme
- Storm Overflow Programme
- Blue Green Corridor
- Storm Overflow Removal
- Drainage Communities

This is drainage community reference DC_07 which is within the Low Wadsworth area. The drainage community is classified as high priority based upon it containing a river water asset discharging to an environmentally sensitive area. The DWMP recommends that storage at the storm overflow(s) and storage in the catchment is created to manage and improve spill and flooding performance. The application of growth in the catchment has shown that no investment is required at the sewage treatment works.

£1,840,000

Cost

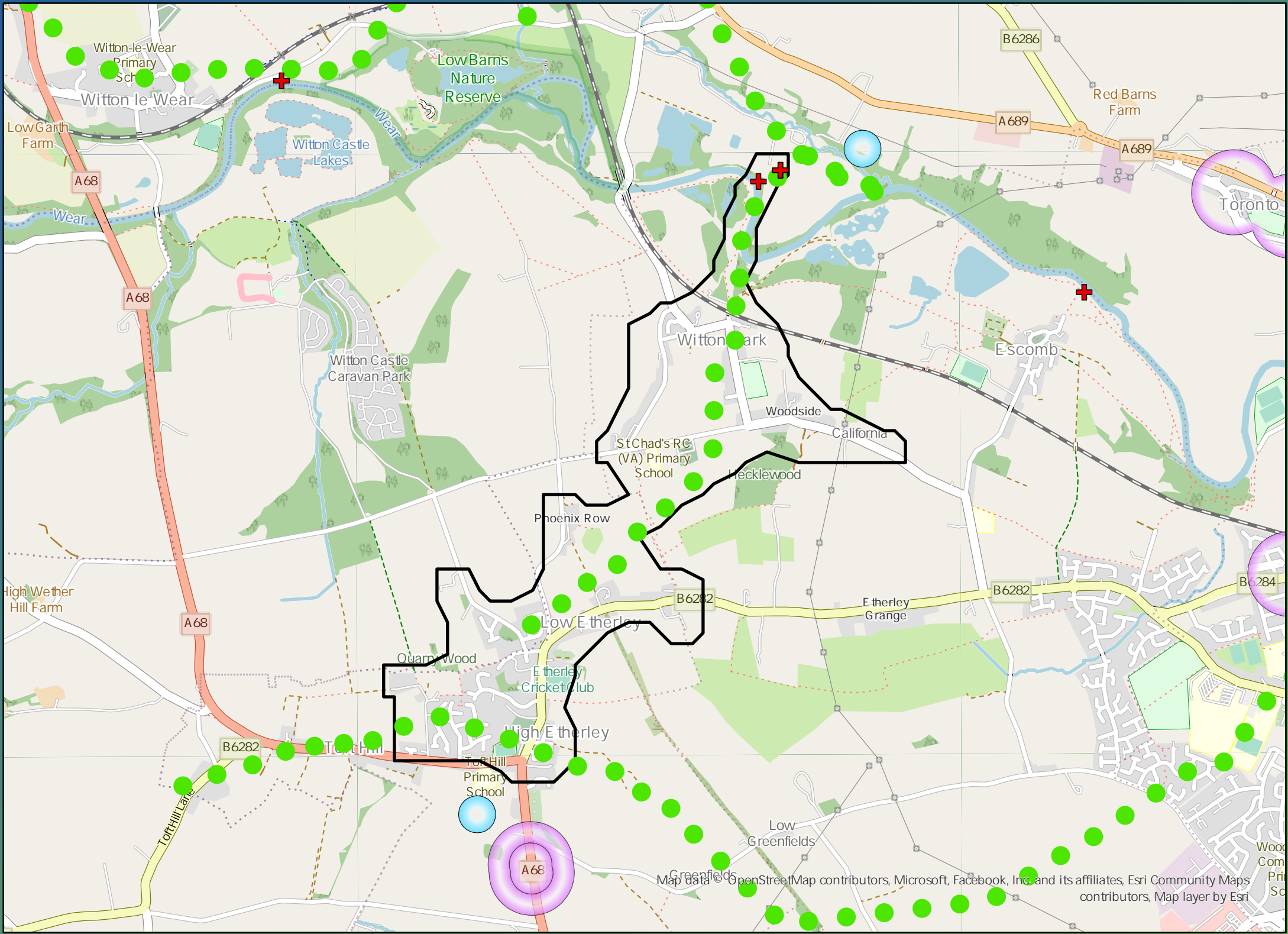
£7,020,000

Benefit

DWMP Drainage Community Summary Low Wadsworth



<p>Properties at Risk of Flooding Internally</p>	2020 24	<p>1</p> <p>Storm overflows spilling to Rivers</p>	<p>0</p> <p>Storm overflows spilling to Bathing Waters</p>	<p>1</p> <p>Manholes at Risk of Pollution</p>	<p>Number of spills to the Environment</p>
	2045 34 Post Investment 0	<p>No</p> <p>Site of Special Scientific Interest</p>	<p>No</p> <p>Strategic Area of Conservation</p>	<p>Yes</p> <p>Strategic Area for Ecology</p>	



Opportunities

- 3rd Party Stakeholder
- WINEP Programme
- Storm Overflow Programme
- Blue Green Corridor
- Storm Overflow Removal
- Drainage Communities

This is drainage community reference DC_08 which is within the Low Wadsworth area. The drainage community is classified as high priority based upon it containing a river water asset discharging to an environmentally sensitive area. The DWMP recommends that storage at the storm overflow(s) and storage in the catchment is created to manage and improve spill and flooding performance. The application of growth in the catchment has shown that no investment is required at the sewage treatment works.

£2,990,000

Cost

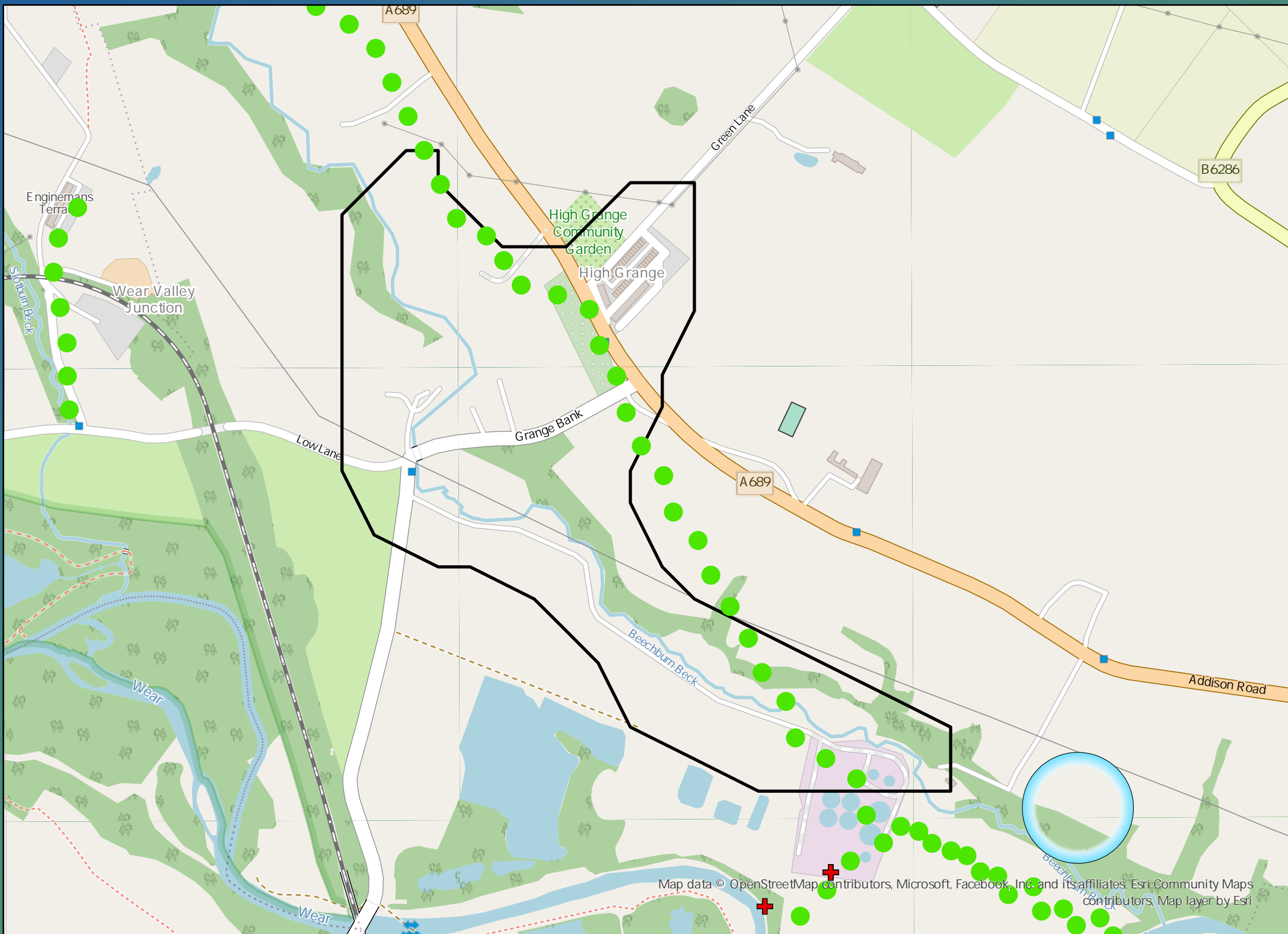
£13,010,000

Benefit

DWMP Drainage Community Summary Low Wadsworth



<p>Properties at Risk of Flooding Internally</p>	2020 0	<p>Storm overflows spilling to Rivers</p>	<p>Storm overflows spilling to Bathing Waters</p>	<p>Manholes at Risk of Pollution</p>	<p>Number of spills to the Environment</p>
	2045 0	<p>Site of Special Scientific Interest</p>	<p>Strategic Area of Conservation</p>	<p>Strategic Area for Ecology</p>	
	Post Investment 0	1	0	0	2020 42
	0	No	No	No	2045 42
	0				Post Investment 10



Opportunities

- 3rd Party Stakeholder
- WINEP Programme
- Storm Overflow Programme
- Blue Green Corridor
- Storm Overflow Removal
- Drainage Communities

This is drainage community reference DC_09 which is within the Low Wadsworth area.

The drainage community is classified as low priority based upon it containing a river water asset discharging to an area without environmental concerns.

The DWMP recommends that no investment is required due to the performance of the storm overflow and level of internal property flood risk in the catchment. The catchment will be monitored for future change.

The application of growth in the catchment has shown that no investment is required at the sewage treatment works.



Cost

£2,310,000



Benefit

£5,130,000