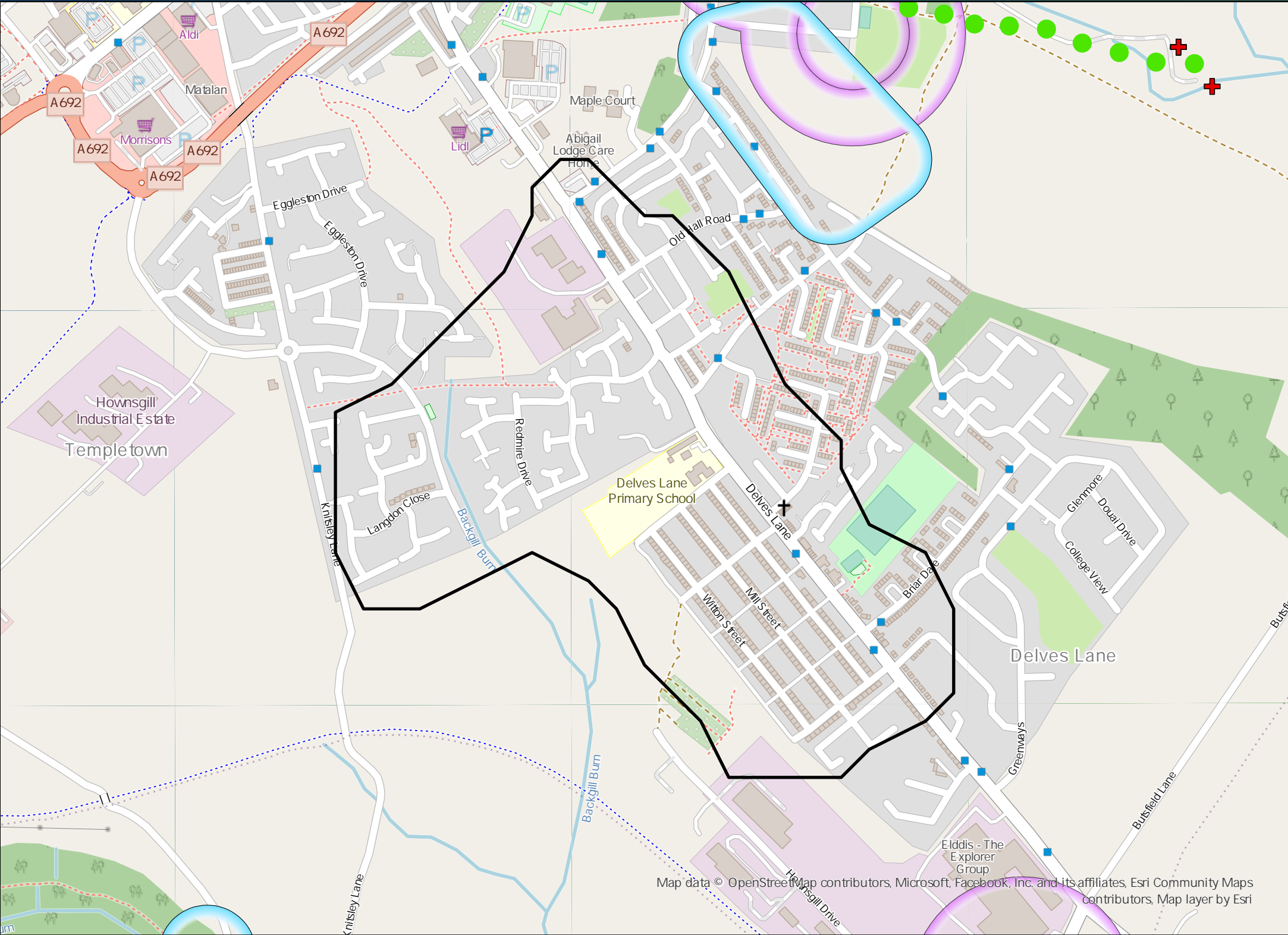


# DWMP Drainage Community Summary Knitsley



 Properties at Risk of Flooding Internally	2020 24	 Storm overflows spilling to Rivers	1	 Storm overflows spilling to Bathing Waters	0	 Manholes at Risk of Pollution	0	 Number of spills to the Environment	2020 8
	2045 35 Post Investment 0	 Site of Special Scientific Interest	No	 Strategic Area of Conservation	No	 Strategic Area for Ecology	No		2045 8 Post Investment 8



## Opportunities


-  3rd Party Stakeholder
-  WINEP Programme
-  Storm Overflow Programme
-  Blue Green Corridor
-  Storm Overflow Removal
-  Drainage Communities

This is drainage community reference DC\_01 which is within the Knitsley area.

The drainage community is classified as low priority based upon it containing a river water asset discharging to an area without environmental concerns.


The DWMP recommends that storage at the storm overflow(s) and storage in the catchment is created to manage and improve spill and flooding performance.

The application of growth in the catchment has shown that no investment is required at the sewage treatment works.



£1,650,000

Cost



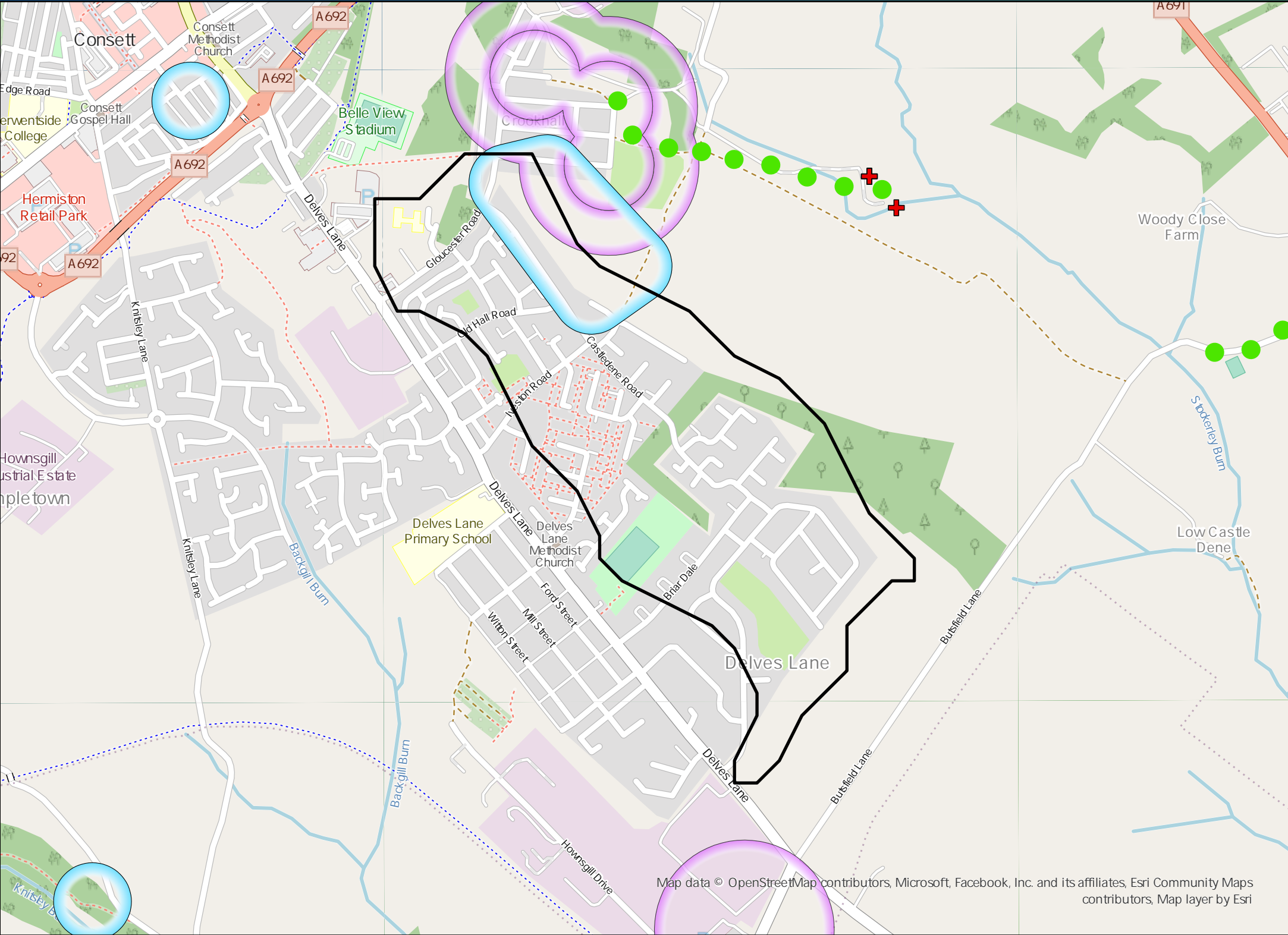
£2,310,000

Benefit

# DWMP Drainage Community Summary Knitsley



 Properties at Risk of Flooding Internally	2020 24	 Storm overflows spilling to Rivers	0	 Storm overflows spilling to Bathing Waters	0	 Manholes at Risk of Pollution	0	 Number of spills to the Environment	2020 0
	2045 0	 Site of Special Scientific Interest	No	 Strategic Area of Conservation	No	 Strategic Area for Ecology	No		2045 0
	Post Investment 0								Post Investment 0



## Opportunities

-  3rd Party Stakeholder
-  WINEP Programme
-  Storm Overflow Programme
-  Blue Green Corridor
-  Storm Overflow Removal
-  Drainage Communities

This is drainage community reference DC\_O2 which is within the Knitsley area.

The drainage community is classified as low priority based upon it containing a river water asset discharging to an area without environmental concerns.

The DWMP recommends that storage at the storm overflow(s) and storage in the catchment is created to manage and improve spill and flooding performance.

The application of growth in the catchment has shown that no investment is required at the sewage treatment works.



Cost

£1,040,000



Benefit

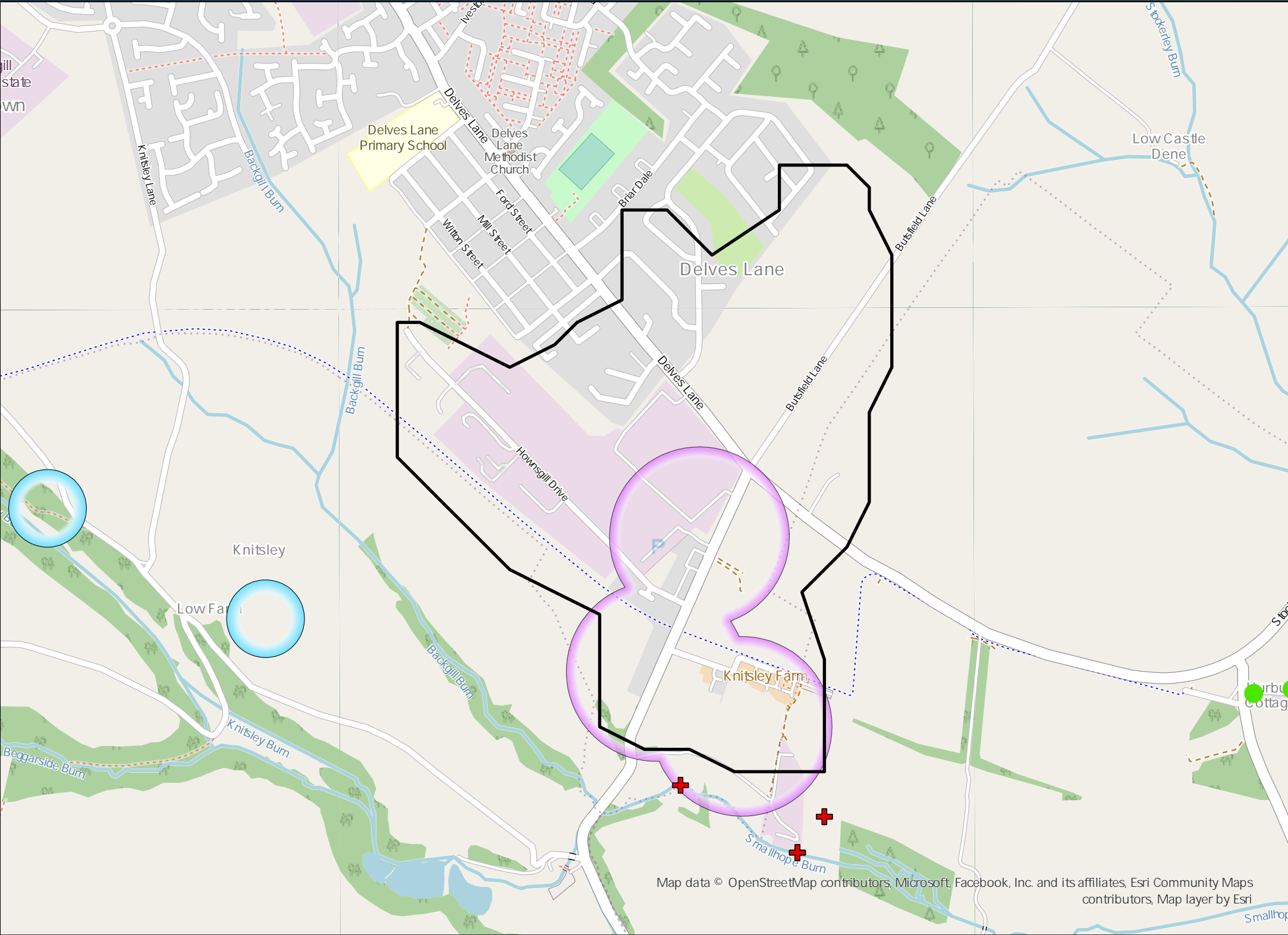
£830,000



# DWMP Drainage Community Summary Knitsley



 Properties at Risk of Flooding Internally	2020 7	 Storm overflows spilling to Rivers	3	 Storm overflows spilling to Bathing Waters	0	 Manholes at Risk of Pollution	0	 Number of spills to the Environment	2020 83
	2045 16 Post Investment 0	 Site of Special Scientific Interest	No	 Strategic Area of Conservation	No	 Strategic Area for Ecology	No		2045 83 Post Investment 30



## Opportunities

- 3rd Party Stakeholder
- WINEP Programme
- Storm Overflow Programme
- Blue Green Corridor
- Storm Overflow Removal
- Drainage Communities

This is drainage community reference DC\_O3 which is within the Knitsley area.

The drainage community is classified as low priority based upon it containing a river water asset discharging to an area without environmental concerns.

The DWMP recommends that storage at the storm overflow(s) and storage in the catchment is created to manage and improve spill and flooding performance.

The application of growth in the catchment has shown that no investment is required at the sewage treatment works.



Cost

£3,960,000



Benefit

£10,720,000