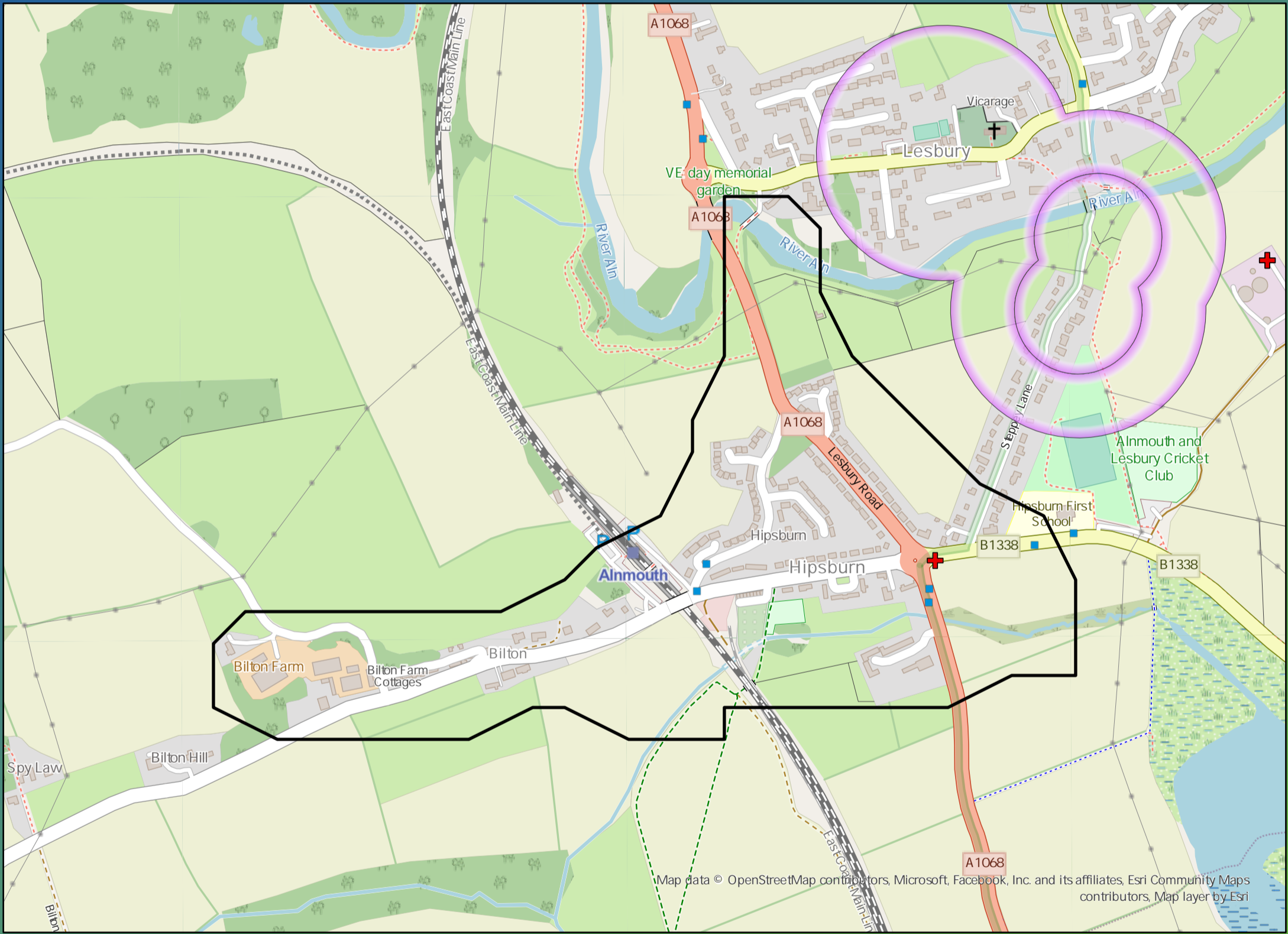


# DWMP Drainage Community Summary Alnmouth



<p>Properties at Risk of Flooding Internally</p>	2020 <b>3</b>	<p>Storm overflows spilling to Rivers</p>	<p>Storm overflows spilling to Bathing Waters</p>	<p>Manholes at Risk of Pollution</p>	<p>Number of spills to the Environment</p>
	2045 <b>5</b>	<p>Site of Special Scientific Interest</p>	<p>Strategic Area of Conservation</p>	<p>Strategic Area for Ecology</p>	
	Post Investment <b>0</b>	<b>Yes</b>	<b>Yes</b>	<b>No</b>	2045 <b>20</b>
					Post Investment <b>10</b>



## Opportunities

- 3rd Party Stakeholder
- WINEP Programme
- Storm Overflow Programme
- Blue Green Corridor
- Storm Overflow Removal
- Drainage Communities

This is drainage community reference DC\_01 which is within the Alnmouth area.  
 The drainage community is classified as high priority based upon it containing a river water asset discharging to an environmentally sensitive area.  
 The DWMP recommends that storage at the storm overflow(s) and storage in the catchment is created to manage and improve spill and flooding performance.  
 The application of growth in the catchment has shown that no investment is required at the sewage treatment works.

**£1,590,000**

Cost

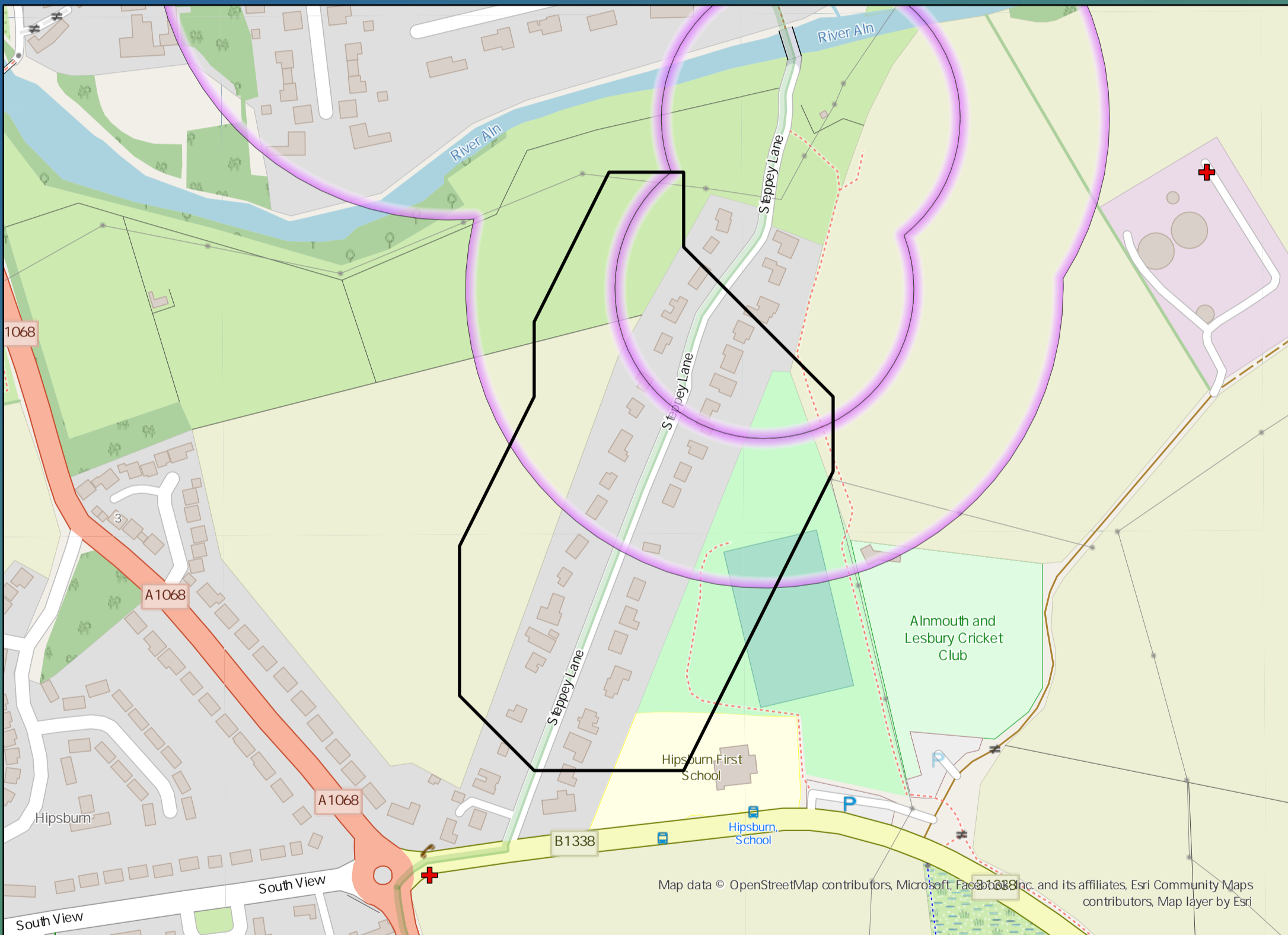
**£2,530,000**

Benefit

# DWMP Drainage Community Summary Alnmouth



<p>Properties at Risk of Flooding Internally</p>	2020 0	<p>Storm overflows spilling to Rivers</p>	2020 0	<p>Storm overflows spilling to Bathing Waters</p>	2020 0	<p>Number of spills to the Environment</p>	2020 0
	2045 0		<p>Site of Special Scientific Interest</p>		2045 0		<p>Strategic Area of Conservation</p>
	Post Investment 0		No		No		Post Investment 0



## Opportunities

- 3rd Party Stakeholder
- WINEP Programme
- Storm Overflow Programme
- Blue Green Corridor
- Storm Overflow Removal
- Drainage Communities

This is drainage community reference DC\_O2 which is within the Alnmouth area.  
 The drainage community is classified as low priority based upon it containing a river water asset discharging to an area without environmental concerns.  
 The DWMP recommends that no investment is required due to the performance of the storm overflow and level of internal property flood risk in the catchment. The catchment will be monitored for future change.  
 The application of growth in the catchment has shown that no investment is required at the sewage treatment works.

£0

Cost

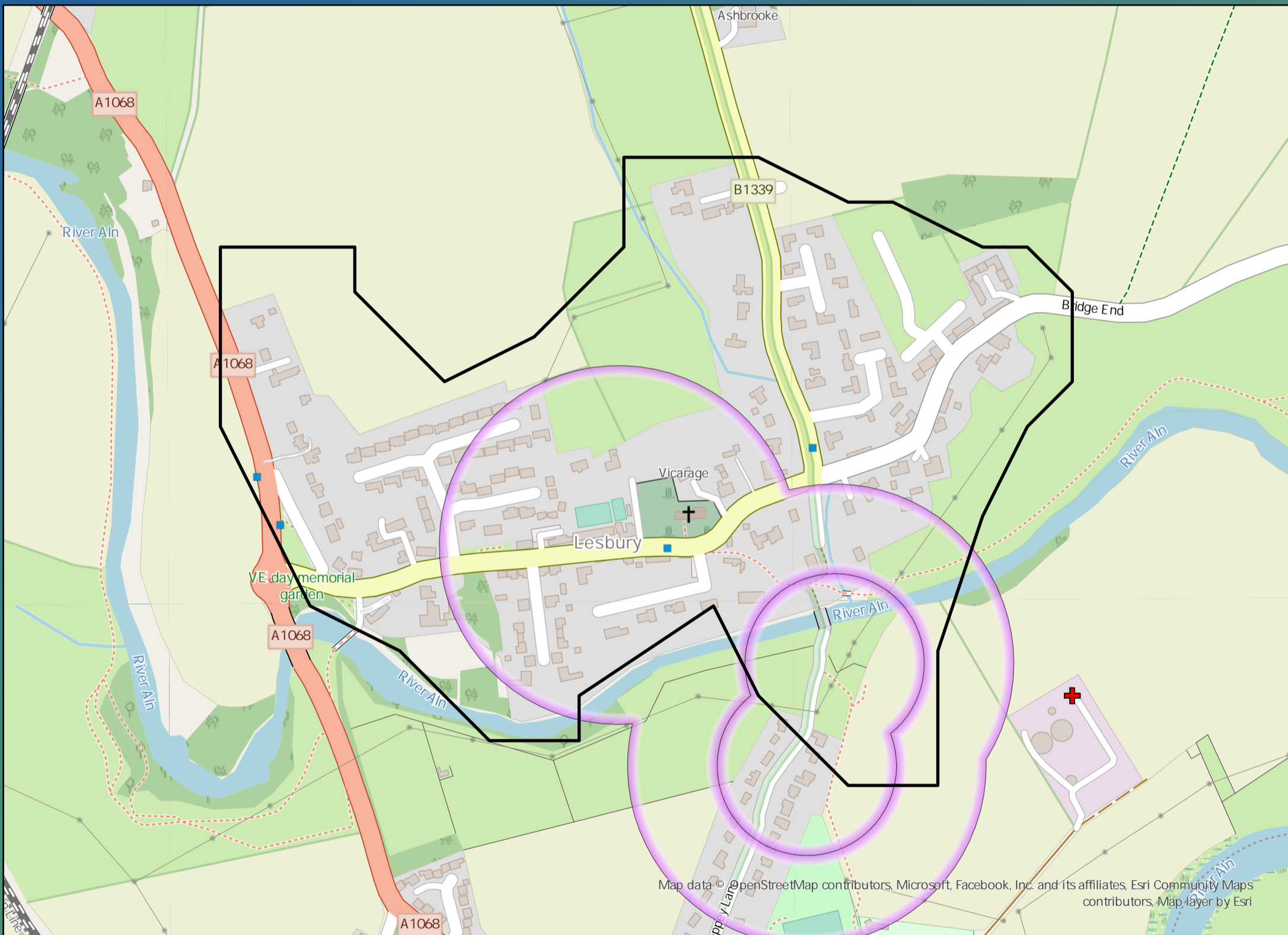
£0

Benefit

# DWMP Drainage Community Summary Alnmouth



<p>Properties at Risk of Flooding Internally</p>	2020 <b>2</b>	<p>Storm overflows spilling to Rivers</p>	<p>Storm overflows spilling to Bathing Waters</p>	<p>Manholes at Risk of Pollution</p>	<p>Number of spills to the Environment</p>
	2045 <b>0</b> Post Investment <b>0</b>	<p>Site of Special Scientific Interest</p>	<p>Strategic Area of Conservation</p>	<p>Strategic Area for Ecology</p>	



## Opportunities

- 3rd Party Stakeholder
- WINEP Programme
- Storm Overflow Programme
- Blue Green Corridor
- Storm Overflow Removal
- Drainage Communities

This is drainage community reference DC\_03 which is within the Alnmouth area.  
 The drainage community is classified as low priority based upon it containing a river water asset discharging to an area without environmental concerns.  
 The DWMP recommends that storage at the storm overflow(s) and storage in the catchment is created to manage and improve spill and flooding performance.  
 The application of growth in the catchment has shown that no investment is required at the sewage treatment works.

**£1,760,000**

Cost

**£11,560,000**

Benefit

# DWMP Drainage Community Summary Alnmouth



<p>Properties at Risk of Flooding Internally</p>	2020 <b>15</b>	<p>Storm overflows spilling to Rivers</p>	<p>Storm overflows spilling to Bathing Waters</p>	<p>Manholes at Risk of Pollution</p>	<p>Number of spills to the Environment</p>
	2045 <b>23</b>	<p>Site of Special Scientific Interest</p>	<p>Strategic Area of Conservation</p>	<p>Strategic Area for Ecology</p>	
Post Investment <b>0</b>	<b>1</b>	<b>0</b>	<b>0</b>	<b>40</b>	<b>40</b>
	<b>Yes</b>	<b>Yes</b>	<b>No</b>	<b>10</b>	<b>Post Investment</b>



Map data © OpenStreetMap contributors, Microsoft, Facebook, Inc. and its affiliates, Esri Community Maps contributors, Map layer by Esri

## Opportunities

- 3rd Party Stakeholder
- WINEP Programme
- Storm Overflow Programme
- Blue Green Corridor
- Storm Overflow Removal
- Drainage Communities

This is drainage community reference DC\_04 which is within the Alnmouth area.  
 The drainage community is classified as high priority based upon it containing a river water asset discharging to an environmentally sensitive area.  
 The DWMP recommends that storage at the storm overflow(s) and storage in the catchment is created to manage and improve spill and flooding performance.  
 The application of growth in the catchment has shown that no investment is required at the sewage treatment works.

**£1,980,000**

Cost

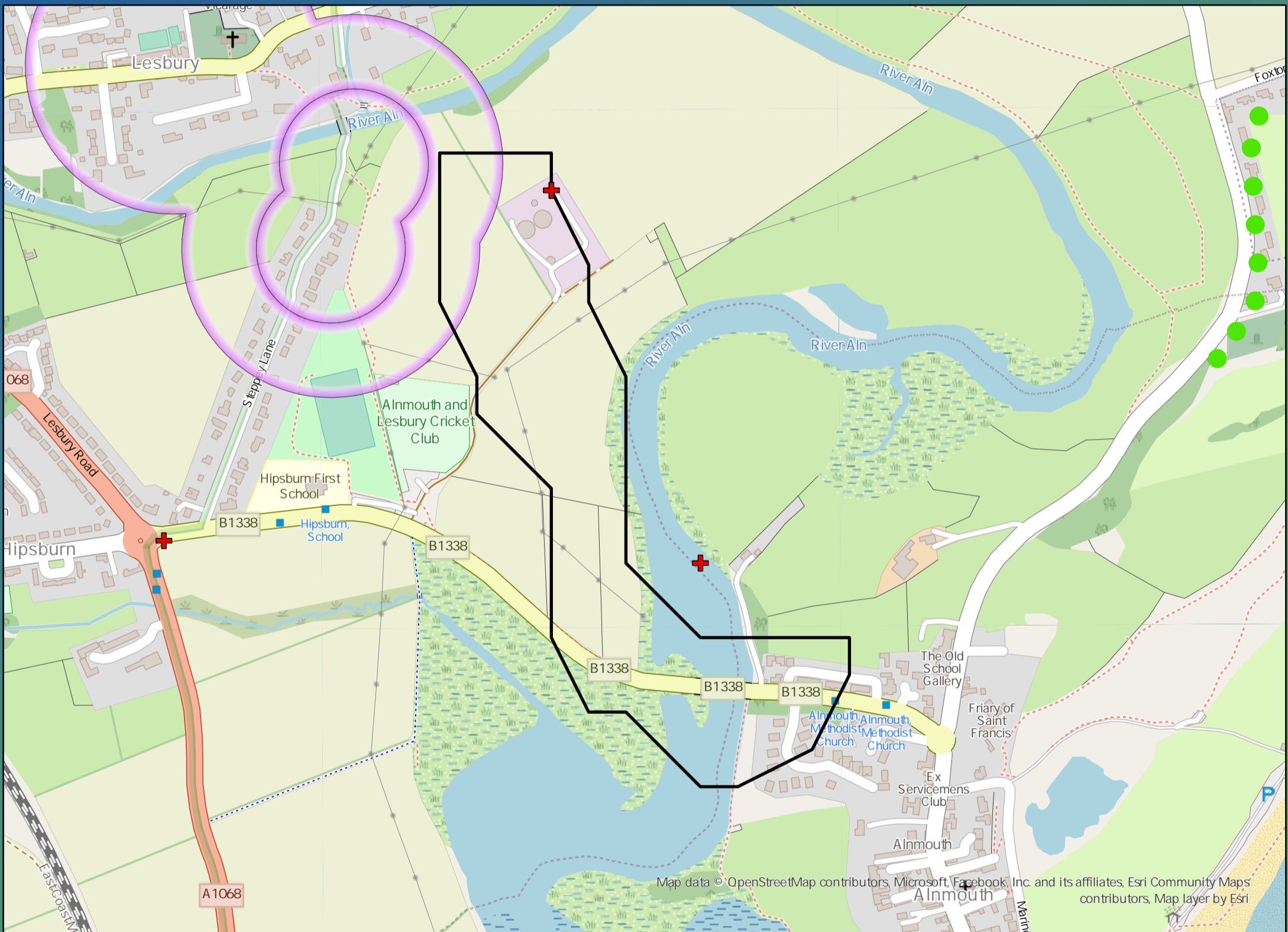
**£5,750,000**

Benefit

# DWMP Drainage Community Summary Alnmouth



<p>Properties at Risk of Flooding Internally</p>	2020 0	<p>Storm overflows spilling to Rivers</p>	0	<p>Storm overflows spilling to Bathing Waters</p>	0	<p>Manholes at Risk of Pollution</p>	0	<p>Number of spills to the Environment</p>	2020 0
	2045 0	<p>Site of Special Scientific Interest</p>	No	<p>Strategic Area of Conservation</p>	No	<p>Strategic Area for Ecology</p>	No		2045 0
	Post Investment 0							Post Investment 0	



## Opportunities

- 3rd Party Stakeholder
- WINEP Programme
- Storm Overflow Programme
- Blue Green Corridor
- Storm Overflow Removal
- Drainage Communities

This is drainage community reference DC\_05 which is within the Alnmouth area.  
 The drainage community is classified as low priority based upon it containing a river water asset discharging to an area without environmental concerns.  
 The DWMP recommends that no investment is required due to the performance of the storm overflow and level of internal property flood risk in the catchment. The catchment will be monitored for future change.  
 The application of growth in the catchment has shown that no investment is required at the sewage treatment works.

**£0**

Cost

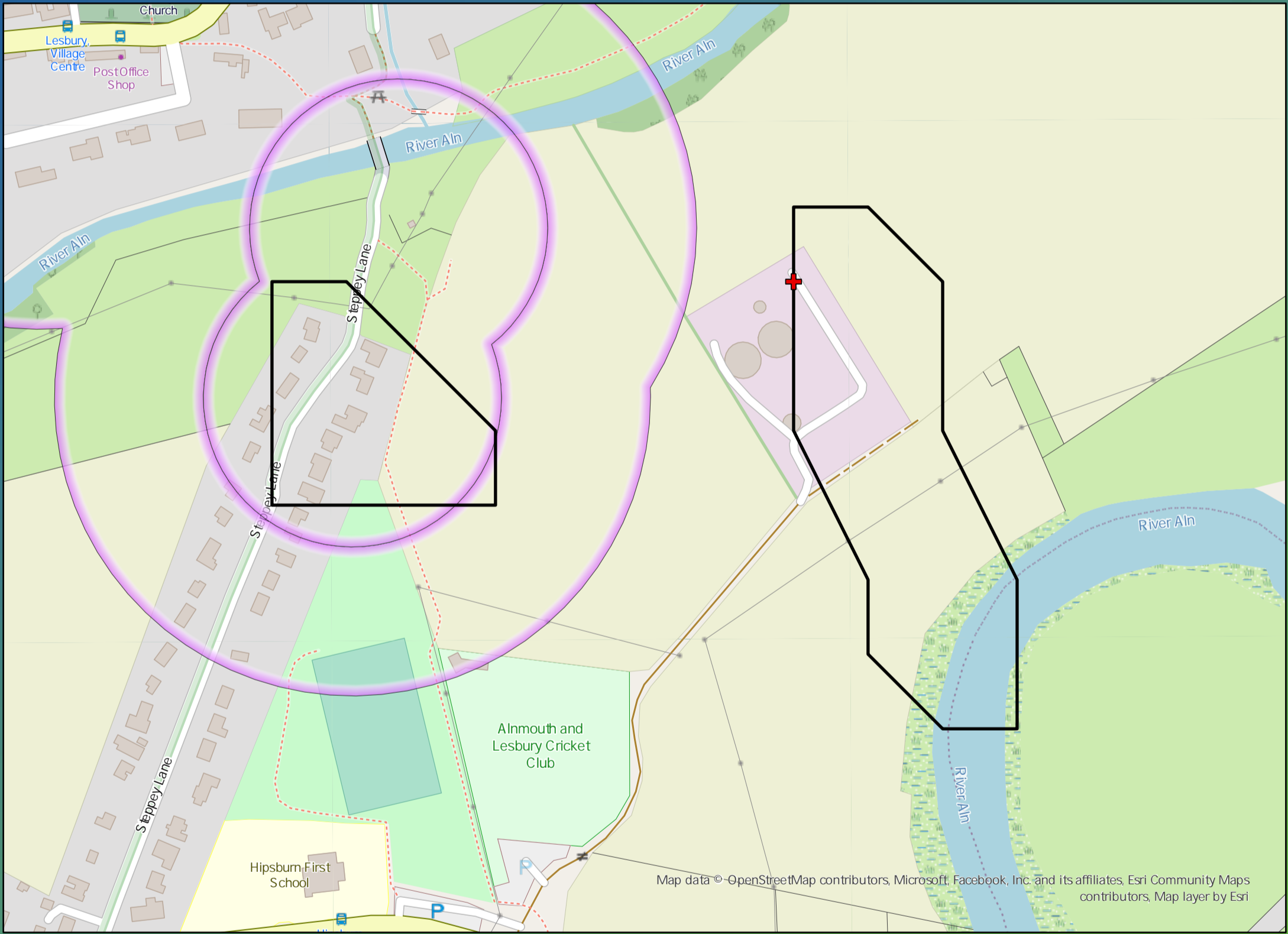
**£0**

Benefit

# DWMP Drainage Community Summary Alnmouth



<p>Properties at Risk of Flooding Internally</p>	2020 0	<p>Storm overflows spilling to Rivers</p>	2020 0	<p>Storm overflows spilling to Bathing Waters</p>	2020 0	<p>Manholes at Risk of Pollution</p>	2020 0	<p>Number of spills to the Environment</p>	2020 0
	2045 0		2045 0		2045 0		2045 0		2045 0
<p>Post Investment</p>	0	<p>Site of Special Scientific Interest</p>	No	<p>Strategic Area of Conservation</p>	No	<p>Strategic Area for Ecology</p>	No	<p>Post Investment</p>	0



## Opportunities

- 3rd Party Stakeholder
- WINEP Programme
- Storm Overflow Programme
- Blue Green Corridor
- Storm Overflow Removal
- Drainage Communities

This is drainage community reference DC\_06 which is within the Alnmouth area.  
 The drainage community is classified as low priority based upon it containing a river water asset discharging to an area without environmental concerns.  
 The DWMP recommends that no investment is required due to the performance of the storm overflow and level of internal property flood risk in the catchment. The catchment will be monitored for future change.  
 The application of growth in the catchment has shown that no investment is required at the sewage treatment works.

**£0**

Cost

**£0**

Benefit

# DWMP Drainage Community Summary Alnmouth



<p>Properties at Risk of Flooding Internally</p>	2020 <b>0</b>	<p>Storm overflows spilling to Rivers</p>	<p>Storm overflows spilling to Bathing Waters</p>	<p>Manholes at Risk of Pollution</p>	<p>Number of spills to the Environment</p>
	2045 <b>0</b>	<p>Site of Special Scientific Interest</p>	<p>Strategic Area of Conservation</p>	<p>Strategic Area for Ecology</p>	
	Post Investment <b>0</b>	<b>No</b>	<b>No</b>	<b>No</b>	2020 <b>0</b>
	<b>0</b>				2045 <b>0</b>
	<b>0</b>				Post Investment <b>0</b>



Map data © OpenStreetMap contributors, Microsoft, Facebook, Inc. and its affiliates, Esri Community Maps contributors, Map layer by Esri

## Opportunities

- 3rd Party Stakeholder
- WINEP Programme
- Storm Overflow Programme
- Blue Green Corridor
- Storm Overflow Removal
- Drainage Communities

This is drainage community reference DC\_07 which is within the Alnmouth area.  
 The drainage community is classified as low priority based upon it containing a river water asset discharging to an area without environmental concerns.  
 The DWMP recommends that no investment is required due to the performance of the storm overflow and level of internal property flood risk in the catchment. The catchment will be monitored for future change.  
 The application of growth in the catchment has shown that no investment is required at the sewage treatment works.

**£0**

Cost

**£0**

Benefit