

**THRILLING THIRD ISSUE**

# **W2 GANG**



**FANTASTIC  
VOYAGE !!**  
**JOIN THE GANG ON AN  
INCREDIBLE JOURNEY INTO  
THE HUMAN BRAIN!**

**ONE DAY AT SCHOOL ...**

WHAT DOES A TADPOLE GROW INTO ... JERMAINE ?

ER...?

A BUTTERFLY ?

Ha! Ha! Ha!

**LATER IN THE PLAYGROUND ...**

YOU SEE, JERMAINE, WATER DOESN'T JUST TURN US INTO SUPERHEROES - IT HELPS YOU CONCENTRATE TOO !

YEAH, RIGHT !

COME WITH ME - I WANT TO SHOW YOU SOMETHING !

IT'S MY ENTRY FOR THE SCHOOL DESIGN COMPETITION. MY TEACHER THINKS IT'S JUST A MODEL BUT IT'S ACTUALLY MORE INTERESTING - LET'S DRINK UP OUR WATER SO WE CHANGE INTO THE H2O GANG ...

**SEVERAL GULPS LATER ...**

OK. SO, WHAT HAPPENS NOW ?

HOLD TIGHT - WE'RE GOING ON A LITTLE JOURNEY ...

WE'RE SHRINKING ! HOW DID YOU DO THAT ?

EASY ! JUST MY SUPER POWER - SUPER INTELLIGENCE !

SURPRISE ! SURPRISE !

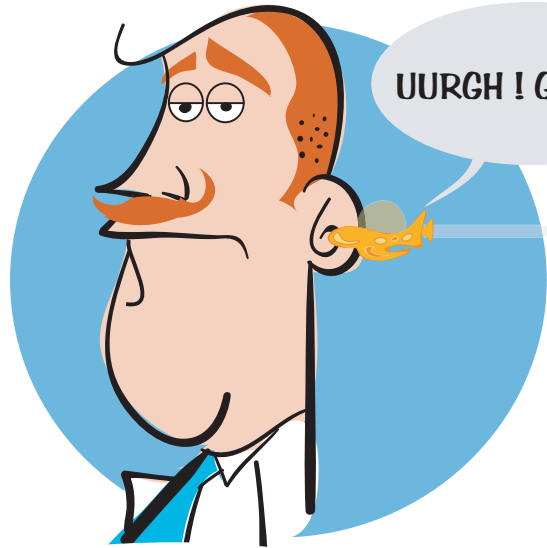
SO WHY SO SMALL ? WHERE ARE WE GOING ?

WAIT AND SEE !

HEY ! THAT'S MR JOHNSON !  
HE'S GOT AN EVEN BIGGER HEAD  
THAN USUAL ! BUT WHY ... ?

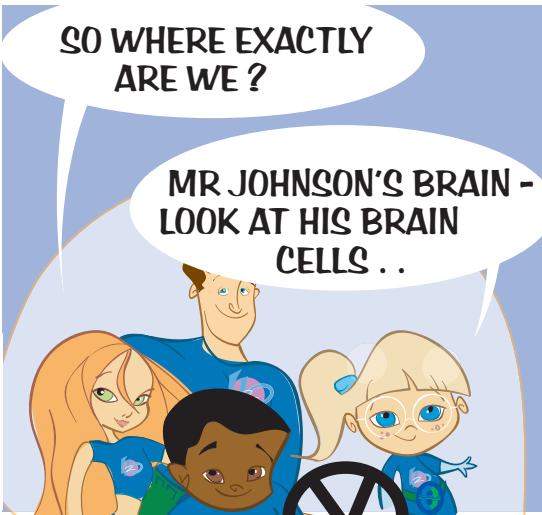


UURGH ! GROSS !



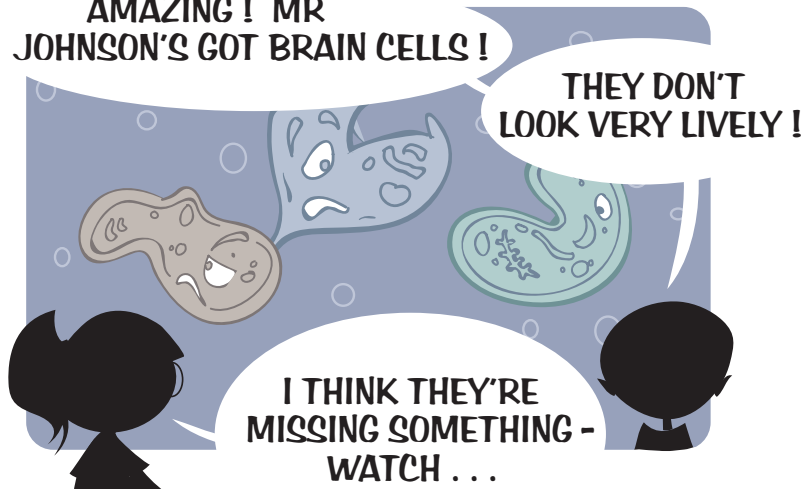
SO WHERE EXACTLY  
ARE WE ?

MR JOHNSON'S BRAIN -  
LOOK AT HIS BRAIN  
CELLS . .



AMAZING ! MR  
JOHNSON'S GOT BRAIN CELLS !

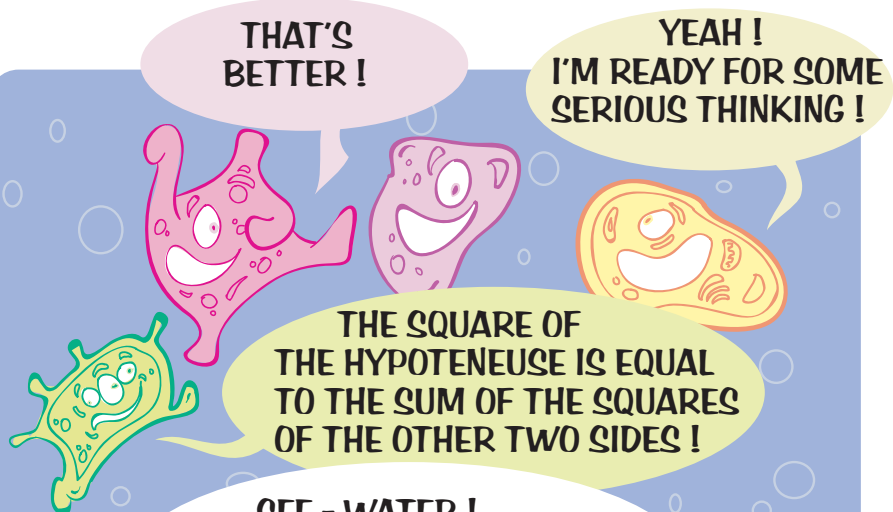
THEY DON'T  
LOOK VERY LIVELY !



I THINK THEY'RE  
MISSING SOMETHING -  
WATCH ...

THAT'S  
BETTER !

YEAH !  
I'M READY FOR SOME  
SERIOUS THINKING !



THE SQUARE OF  
THE HYPOTENEUSE IS EQUAL  
TO THE SUM OF THE SQUARES  
OF THE OTHER TWO SIDES !

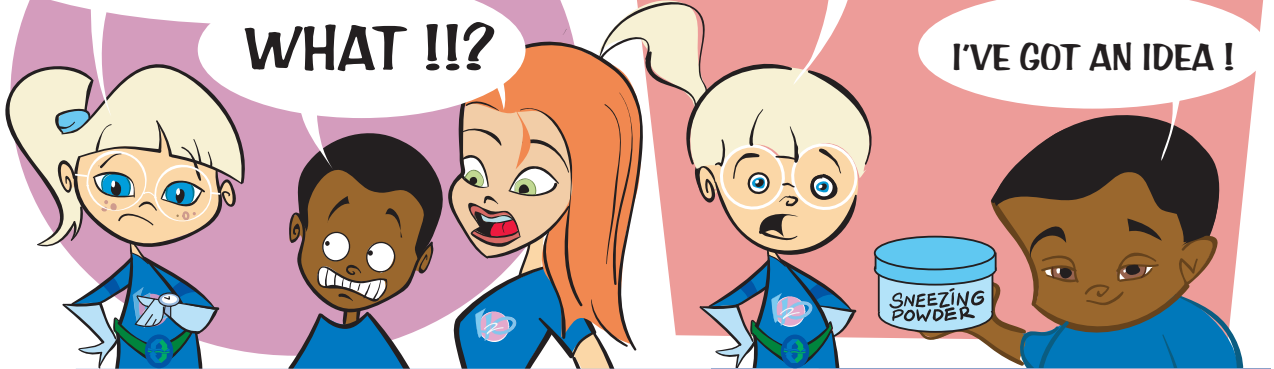
SEE - WATER !  
OUR BODIES ARE 70% WATER  
AND ALL OUR CELLS NEED WATER  
TO STAY HEALTHY !

OK - YOU'VE PROVED YOUR  
POINT. WHEN DO WE GET BACK  
TO OUR NORMAL SIZE ?



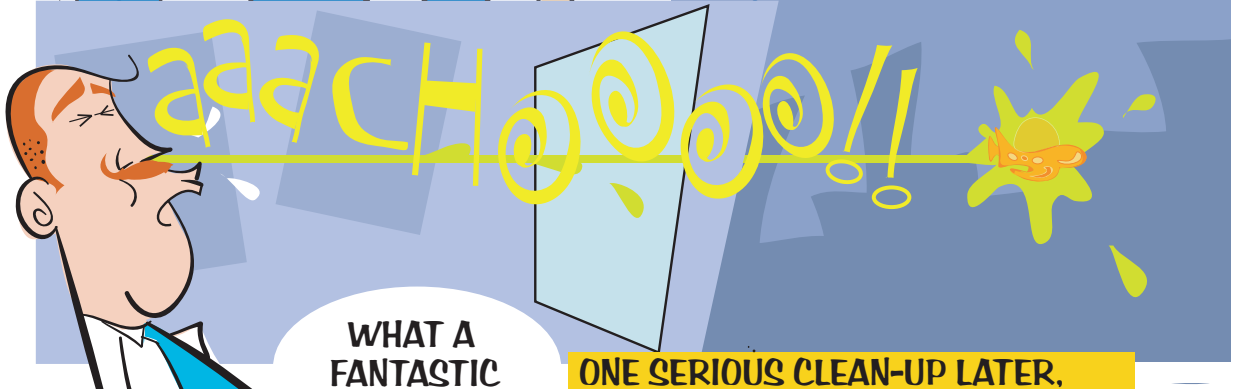
NO PROBLEM - I PROGRAMMED THE SHIP TO RETURN TO NORMAL SIZE IN . . . UH, OH - 30 SECONDS FROM NOW !!

WE'VE GOT TO GET OUT OF HERE - NOW !!



WHAT !!?

I'VE GOT AN IDEA !



WHAT A FANTASTIC VOYAGE !

ONE SERIOUS CLEAN-UP LATER, THE GANG ARE BACK TO NORMAL...

PHEW - THAT WAS CLOSE !

COOL - CAN WE GO ANYWHERE ELSE IN THE BODY ?

... AND THIRD PLACE GOES TO BETHANY ...

THIRD ?

IT'S THE SAME EVERYWHERE, JERMAINE. WATER KEEPS ALL OF OUR CELLS HEALTHY. NOW I NEED TO INVENT AN INSTANT CAR WASH - WATERLESS, OF COURSE !



WELL, IT'S A PRETTY MODEL - BUT IT DOESN'T ACTUALLY DO ANYTHING. DOES IT..?



CONTINUED NEXT ISSUE . . .